

Sport Blouse 1900
with two collar types



Sport Blouse 1900

Simple blouses became popular in the late 1880's.

Women began to work, sport as Tennis or cycling became popular even for Ladies. Blouses allowed more place for movement as conventional waists.

Skirts too lost their trains and draperies.

The blouse, that time called "shirtwaist" typically had a high men style collar and was worn with cravats and bow ties.

Striped cotton fabrics were very popular, just as white fabrics.

Your pattern comes with two different types of collars, a stand-up collar and a round collar with a high collar stand.

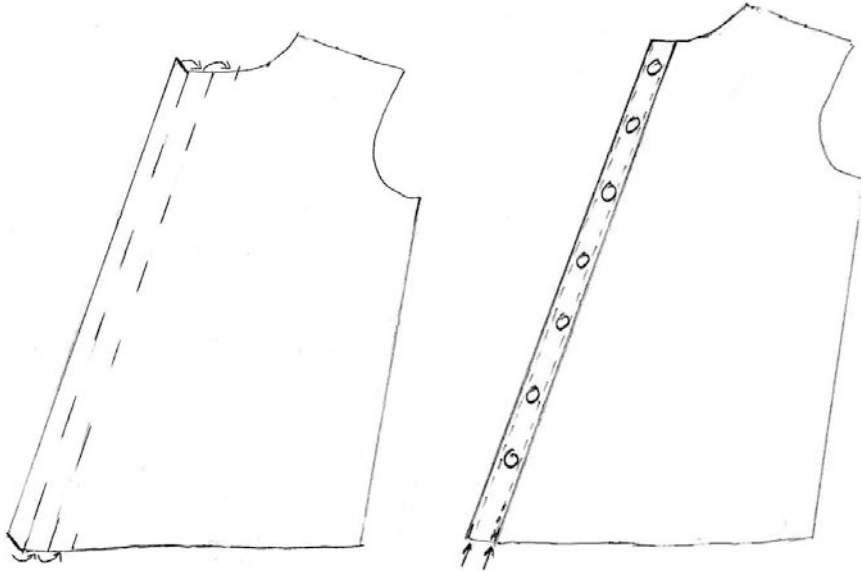
The collar should be narrow like the collar of a men's shirt.



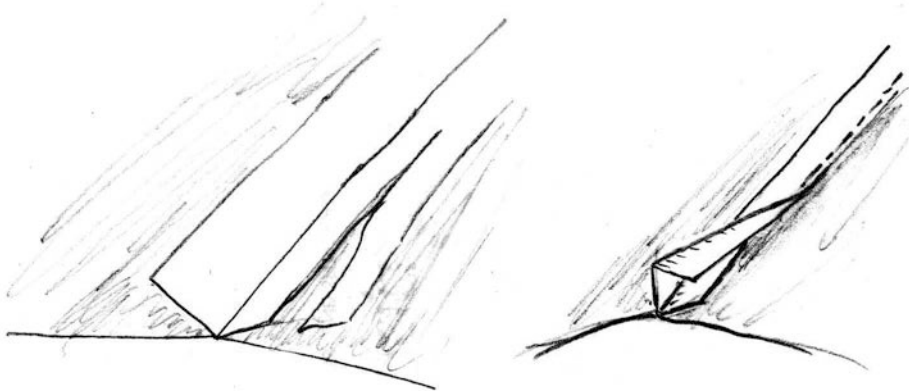
Picture: John Oxley Library, State Library of Queensland

1. Prepare the front part:

For the button facing turn the fabric 2 times at the markings to the right side. Topstitch the button facing on both sides. Width of the finished button facing: 1" (2,5cm)



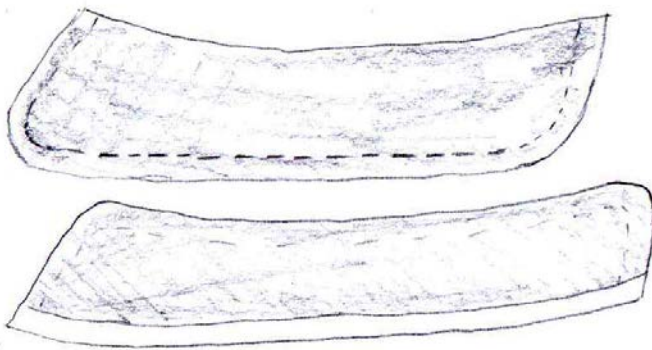
Close shoulder seams, use a flat fell seam. Sew parts right sides together, trim back seam allowance of back piece, fold over seam allowance of front piece and stitch.



2. Collar:

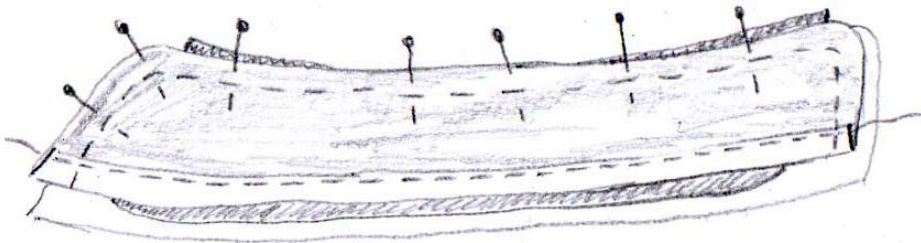
Interface the inner collar stand and the upper Collar. On the collar stand cut the facing without seam allowance for the neck seam.

On the inner collar stand turn in the seam allowance at the neck seam and stitch the seam allowance onto the collar stand. Cut back seam allowance.

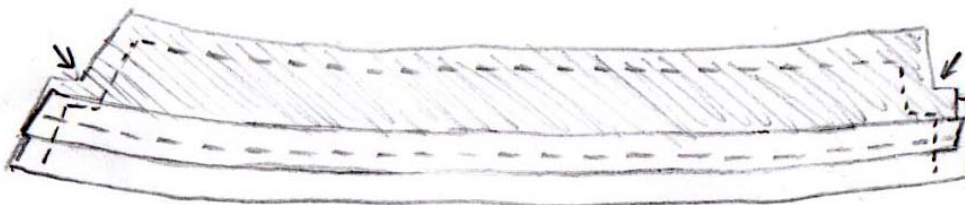


Sew upper and under collar pieces together, cut back seam allowance and turn inside out. Iron and topstitch if wanted.

Put the collar between the two pieces of the collar stand and stitch. Cut back seam allowance, turn inside out and iron.



The stand-up collar is done the same way as the collar stand.

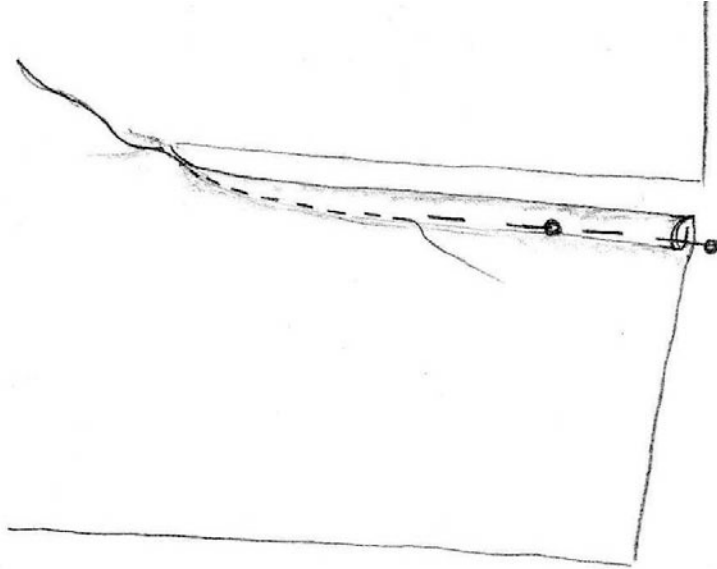


Now sew the collar to the neckline. Cut back seam allowance, cut in seam allowance at curves. Sew on the inner collar stand by hand.

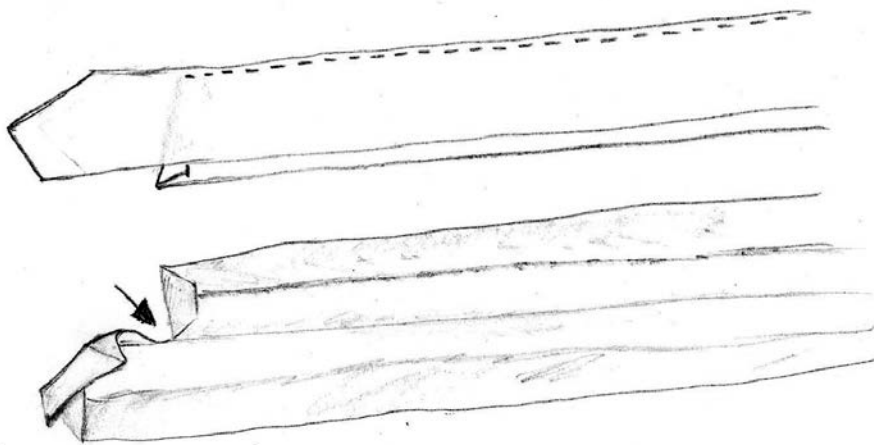
Sew side seams, the best result you will get with a flat fell seam. (Like shoulder seam)

3. Sleeves

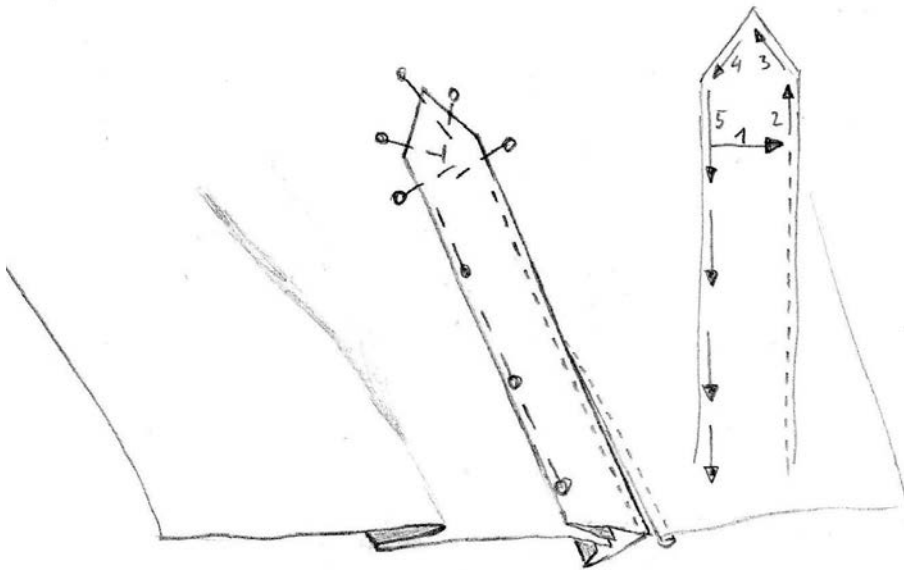
Cut slits, fold the rear edge two times to left side and stitch.



Prepare placket, cut at the corner (arrow) and iron in seam allowances. Fold the placket to the half and topstitch on the fold.



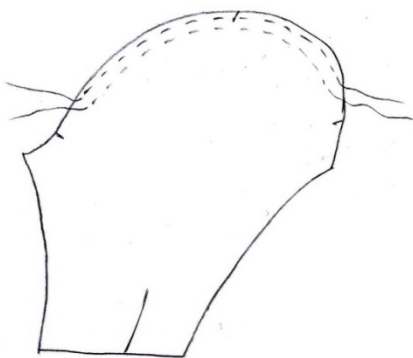
Pin placket to the raw edge of slit and stitch it in the following order.



At the sleeve head sew to rows of gathering stitches. Then close the sleeve seam, if wanted finish with a flat fell stitch (it will be a little bit tricky doing the flat fell seam on a sleeve having a narrow tube underneath your presser foot).

Prepare the cuffs interfacing the upper piece. Attach to sleeve, lay extending fabric into a fold (see illustration above).

Sew in sleeves regarding markings. You can serge the seam allowances the modern way with a zigzag or historically correct with a bias tape.

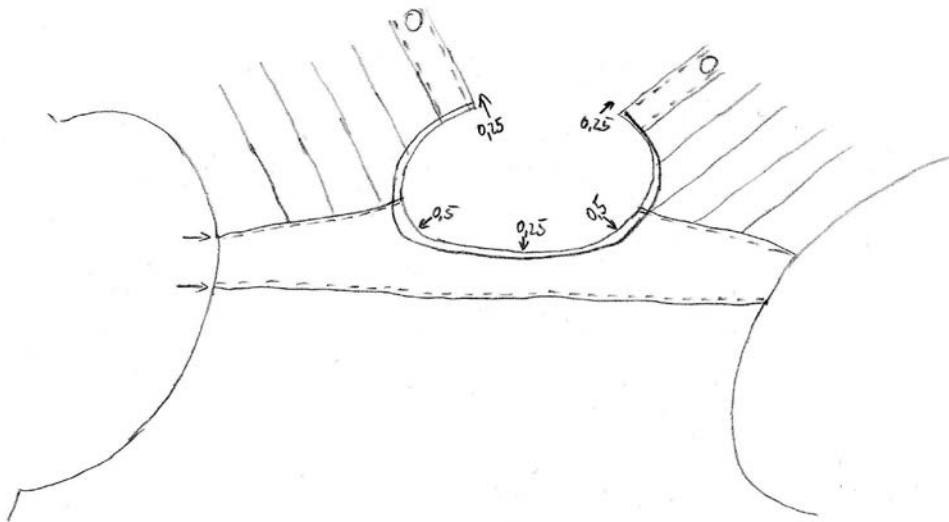


4. Last things to do:

Turn in the hem two times and stitch.

Sew buttonholes and buttons.

Always do a mock-up first. Especially the collar is quite narrow. Lengthen the collar at the centre back as needed, widen the neckline.



Size Chart

General information for historical patterns:

For all historical patterns which would be worn over a Corset, waist circumference is reduced, according to the next smaller size. For Example you wear a size 14 with a bust measurement of 36" and a natural waist of 31" a waist reduction about 2" is already considered.

Please always do a mock-up first.

EUR	34	36	38	40	42	44	46	48	50	52
US	8	10	12	14	16	18	20	22	24	26
Body height					66					
Bust	31,5	32,5	34	36	38	40	42	44	46	48
Waist	26	27,5	29	31	32	34	35,5	38	40	24,5
Hip	37	38	39	40,5	42	43	45	47	49	51
all measurements in inch										

EUR	34	36	38	40	42	44	46	48	50	52
US	8	10	12	14	16	18	20	22	24	26
Body height					168					
Bust	80	84	88	92	96	100	104	110	116	122
Waist	66	70	74	78	82	86	90	96	102	108
Hip	94	97	100	103	106	109	114	119	124	129
Back length	41,4	41,4	41,6	41,8	42	42,2	42,4	42,7	43	43,3
Arm length	59,3	59,6	59,9	60,2	60,5	60,8	61,1	61,4	61,7	62
Upper arm	26	27	28	29	30	31	32	34	36	38
Back width	15,5	16	16,5	17	17,5	18	18,5	19,2	19,9	20,6
Neck circumference	34,6	35,2	35,8	36,4	37	37,6	38,2	39,4	40,6	41,8
Front length	43,6	44,2	44,8	45,4	46	46,6	47,2	48,3	49,4	50,5
all measurements in cm										

Sport blouse 1900 size 34-44

Recommended fabric: lightweight cotton

Fabric required: 1,8 yd. 55" wide / 170cm with a width of 140cm

Interlining, buttons

Pieces:

#1 front: cut 2

#2 back: cut 1 on fold of fabric

#3 sleeve: cut 2

#4 cuff: cut 4

#5 (stand-up collar) or #6 + #7 collar: cut 2 each

#8 placket: cut 2

1/2" seam allowance included, placket: 3/8"

1,5 cm seam allowance included, placket: 1cm

Sportbluse 1900 Größe 34-44

Stoffempfehlung: Blusen- und Hemdenstoffe

Stoffverbrauch: 170cm bei 140cm Breite

Einlage, Knöpfe

Teile:

#1 Vorderteil: 2x

#2 Rückteil: 1x im Stoffbruch

#3 Ärmel: 2x

#4 Manschette: 4x

#5 (Stehkragen) oder #6 + #7 Kragen: je 2x

#8 Schlitzblende: 2x

1,5 cm Nahtzugabe enthalten, Schlitzblende: 1cm

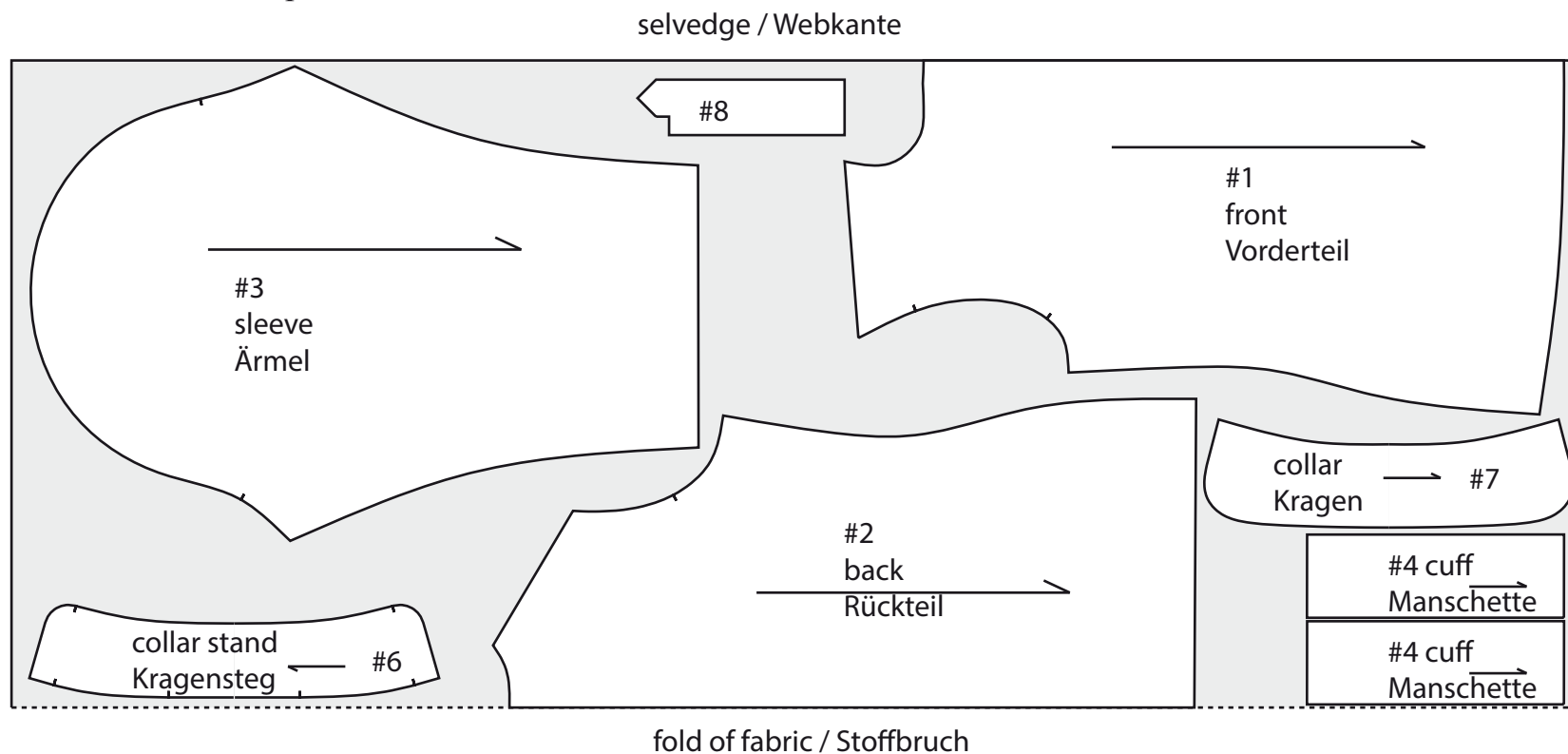


Diagram sheet #1

Übersichtsplan Bogen #1

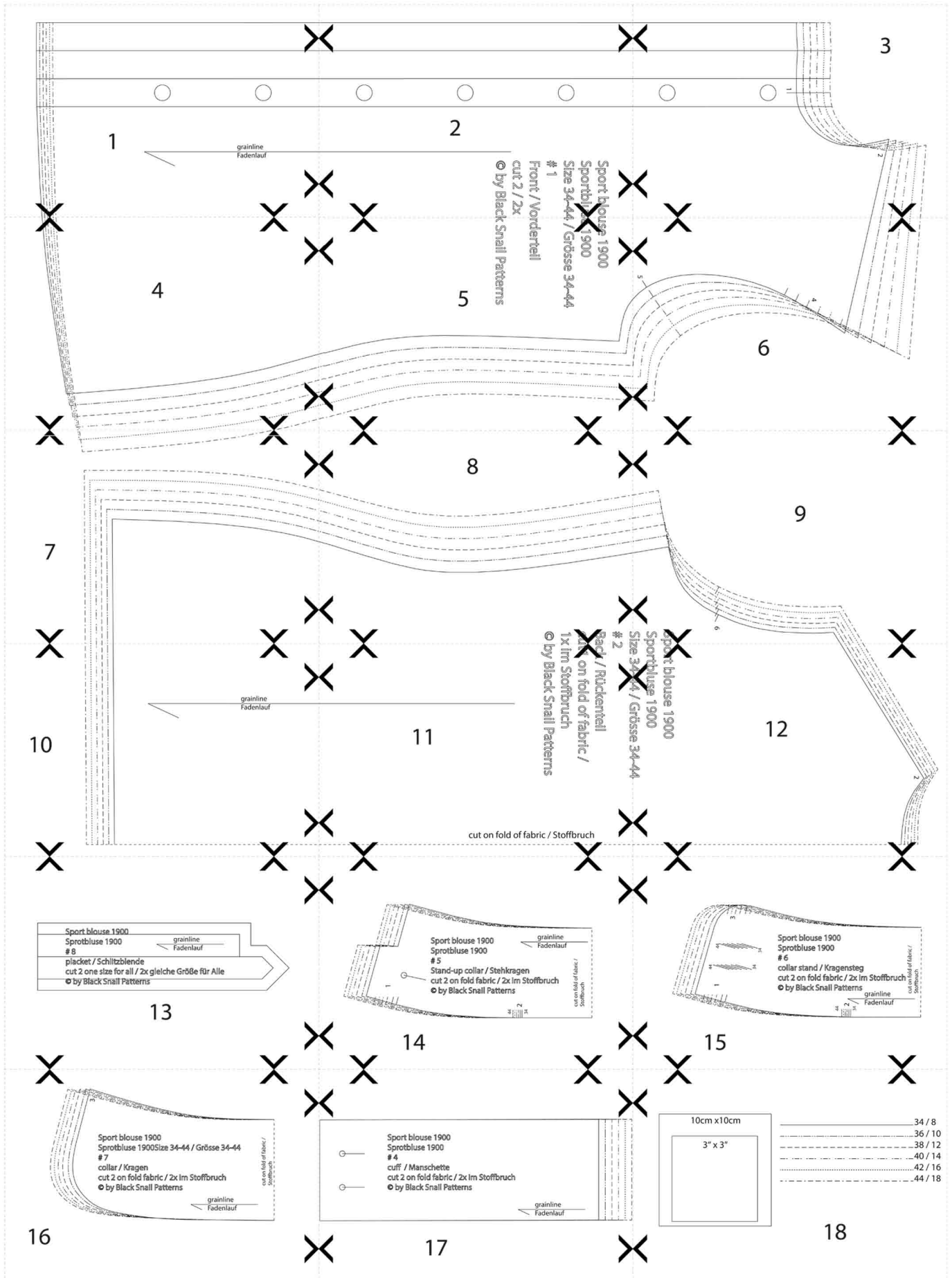
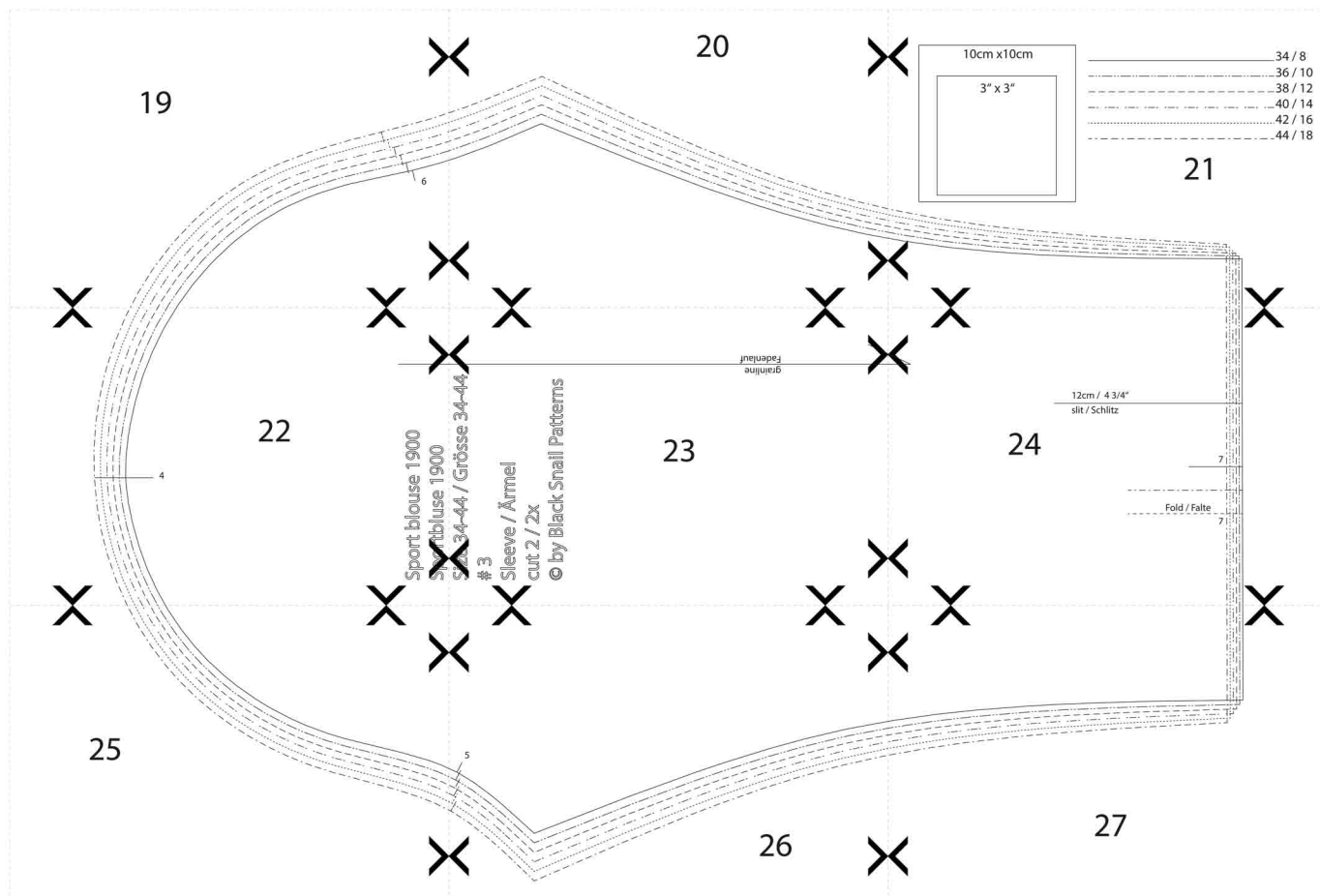
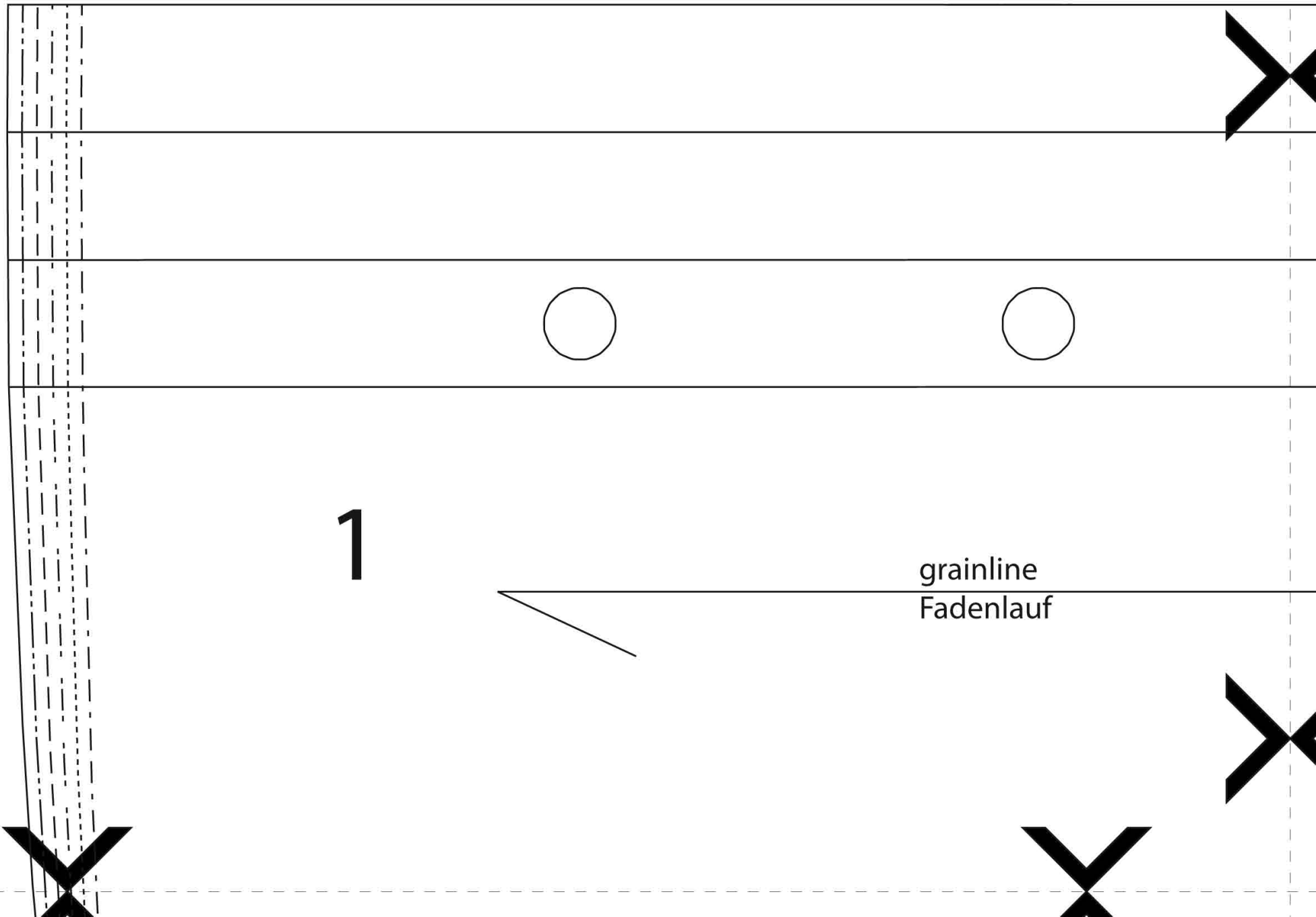


Diagram sheet #2

Übersichtsplan Blatt #2



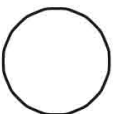
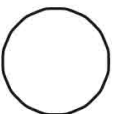
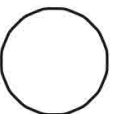


1

grainline
Fadenlauf

Sport blou
Sportbluse
Size 34-44
1
Front / Vord
cut 2 / 2x
© by Black

2

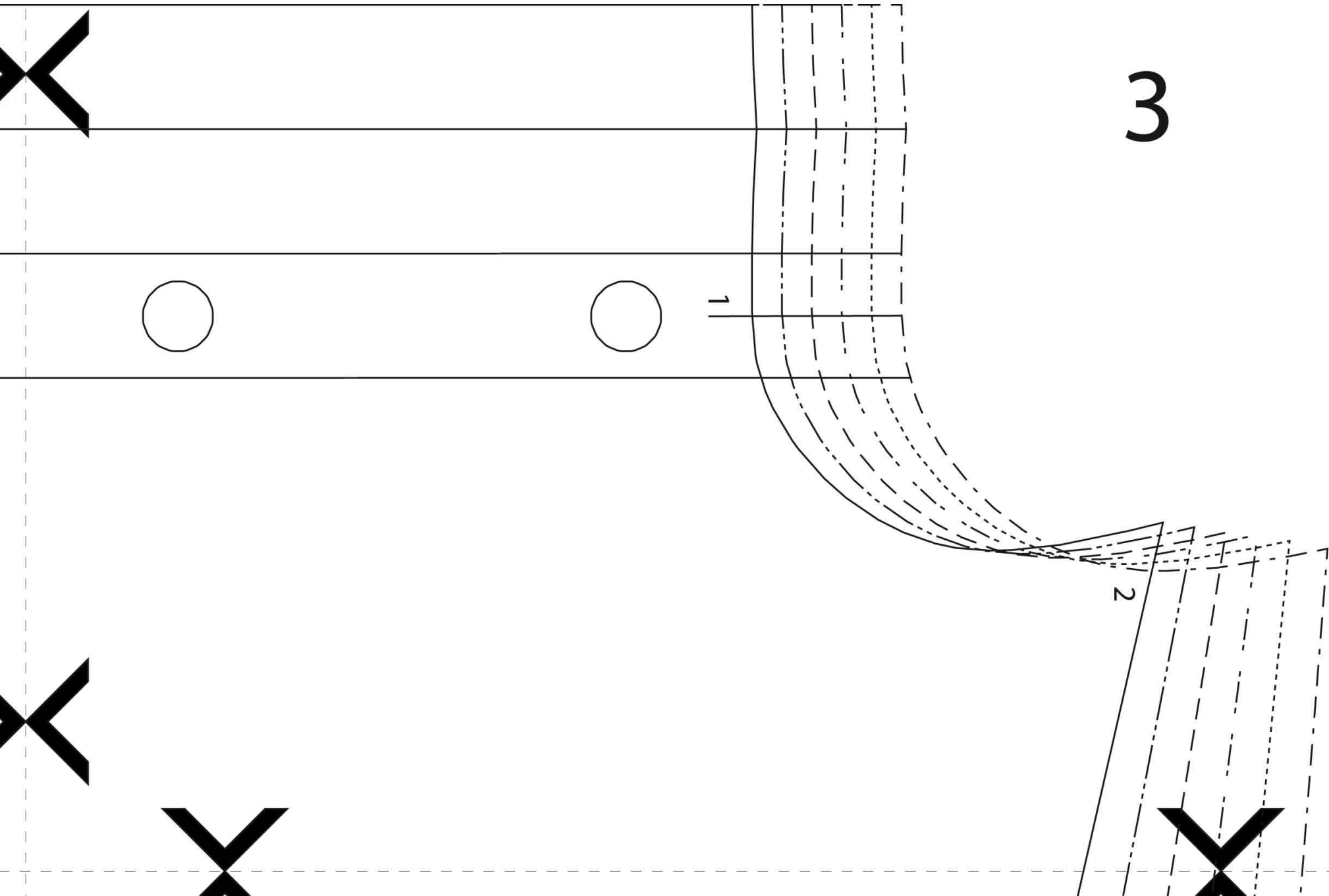


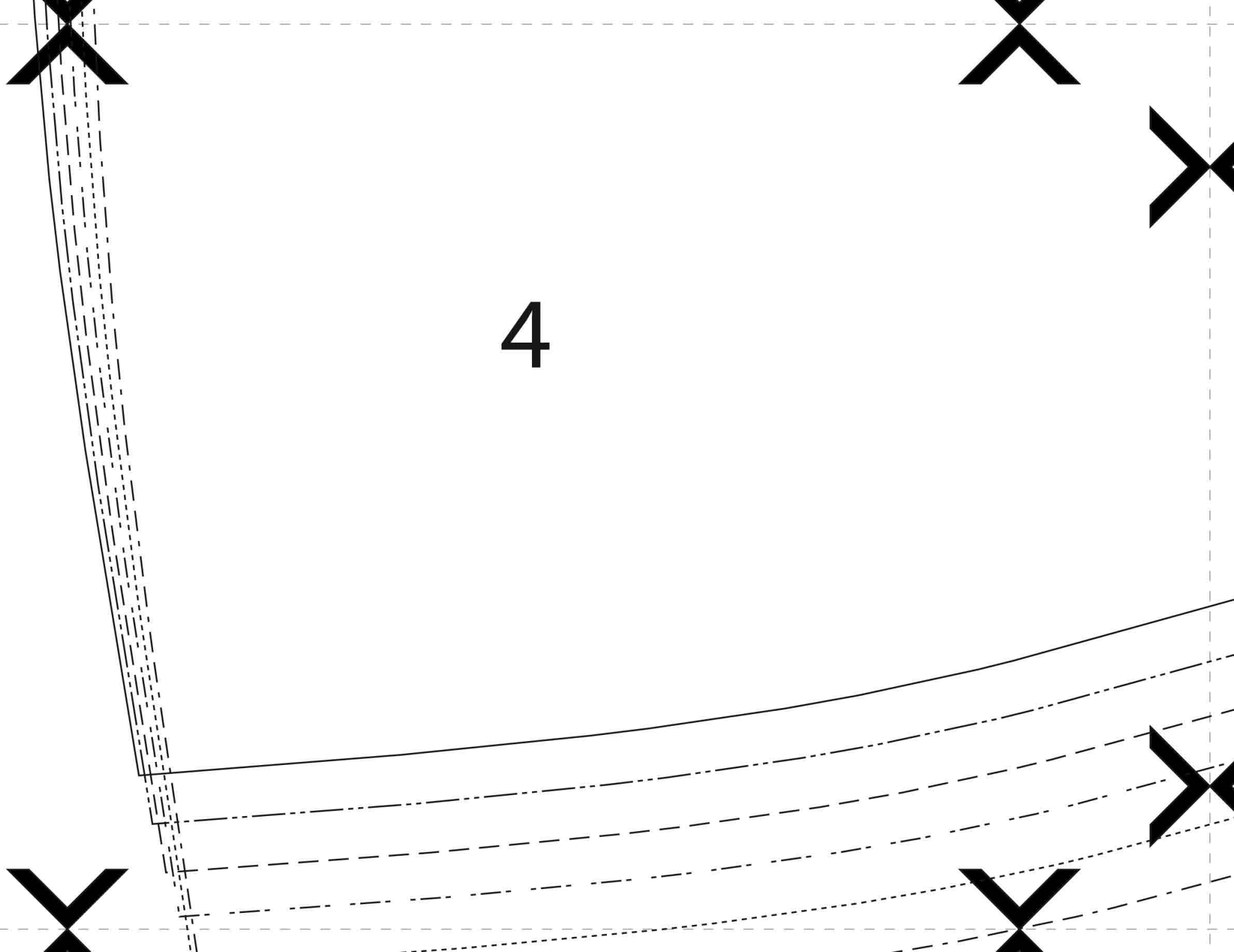


3

1

2





ouse 1900

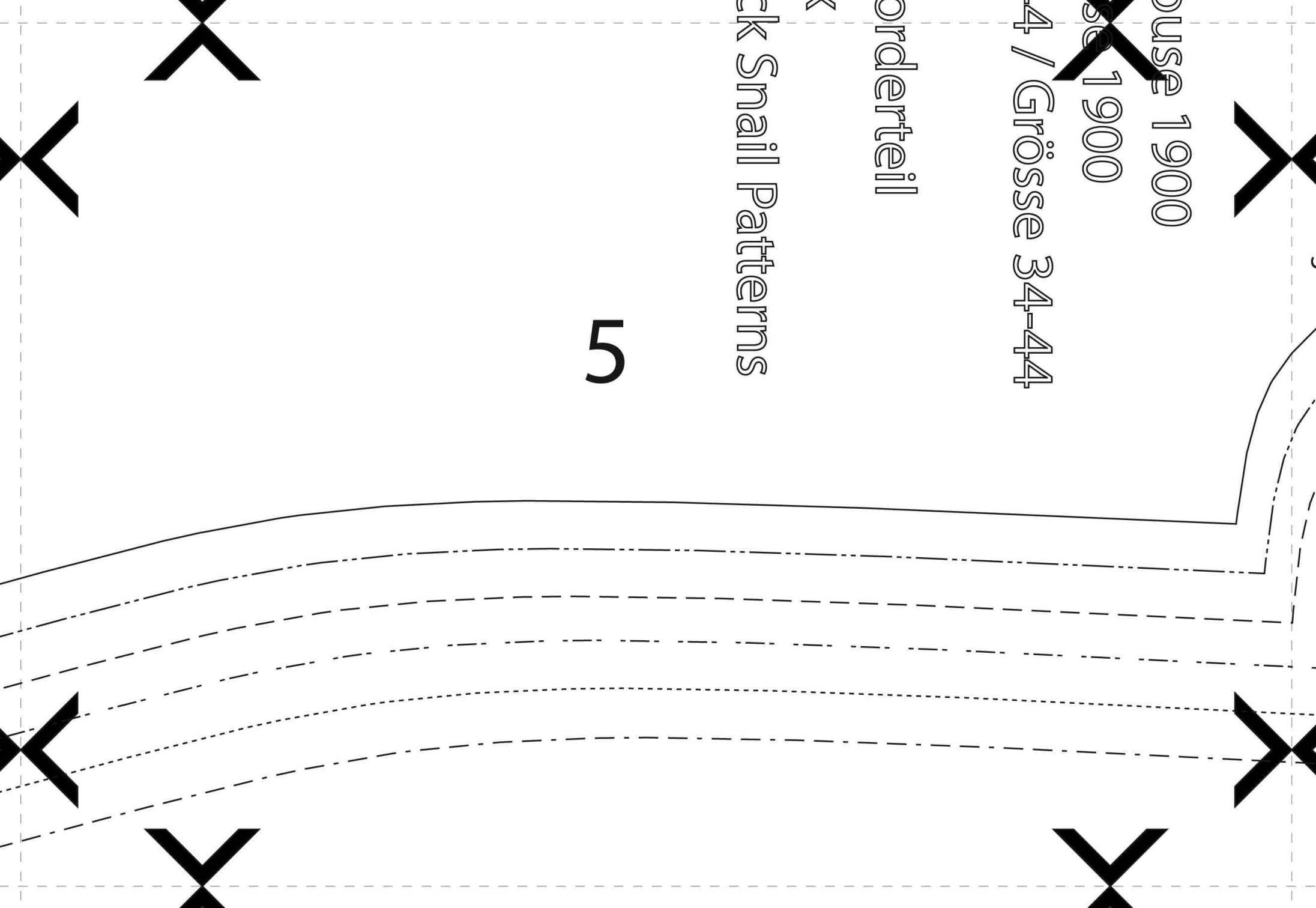
se 1900

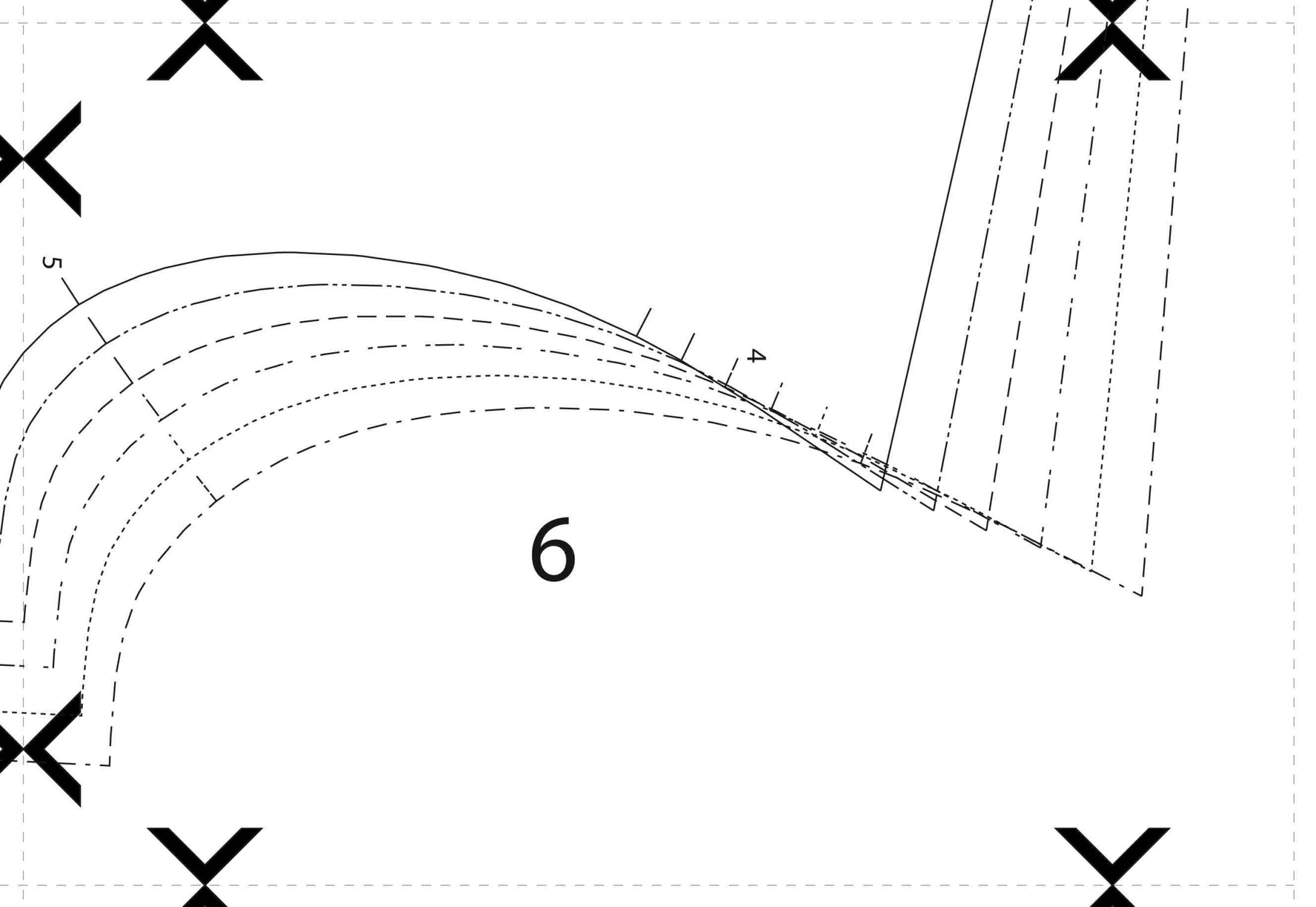
4 / Grösse 34-44

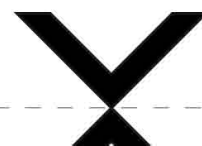
orderteil

ck Snail Patterns

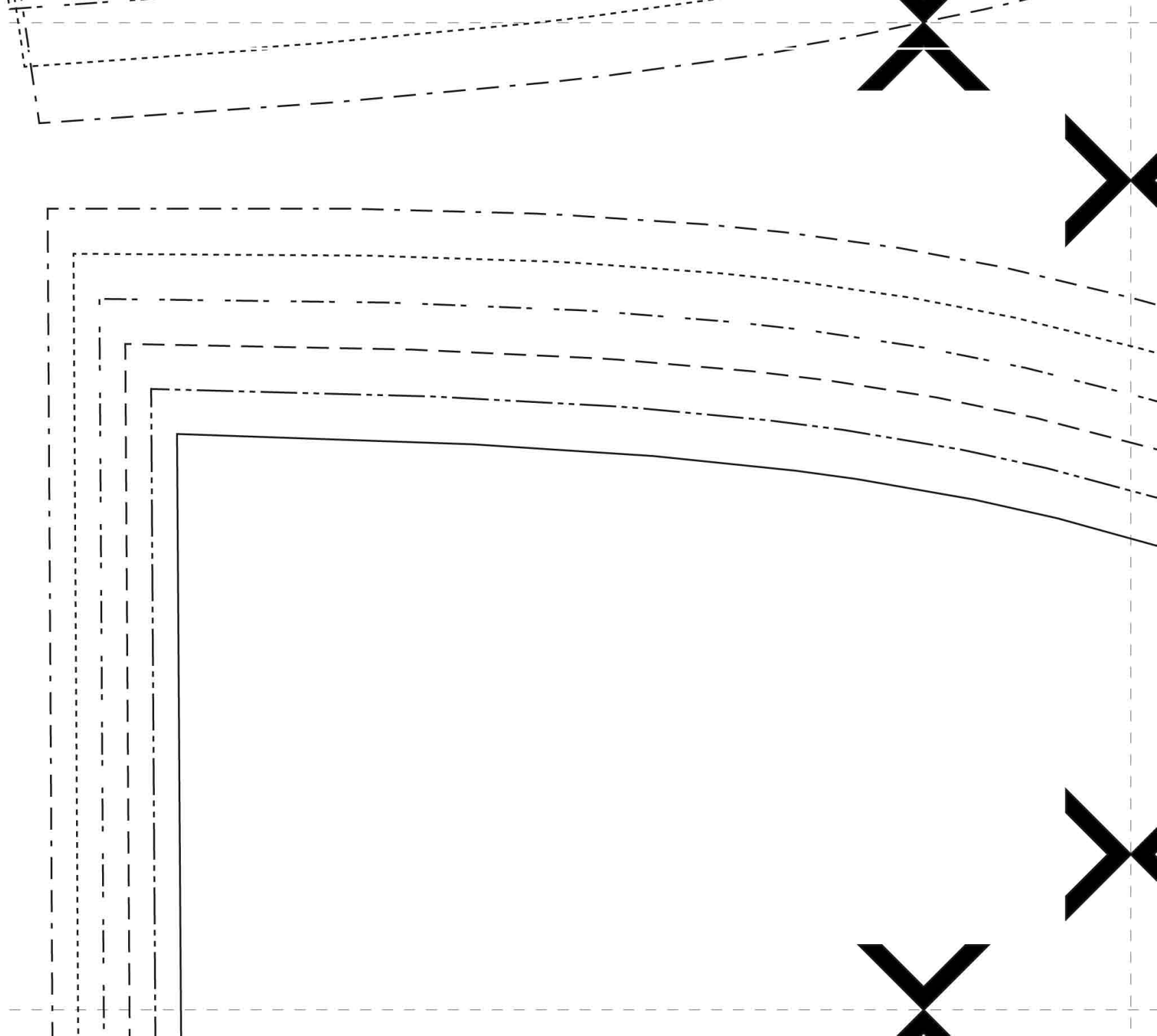
5







7



Size

2

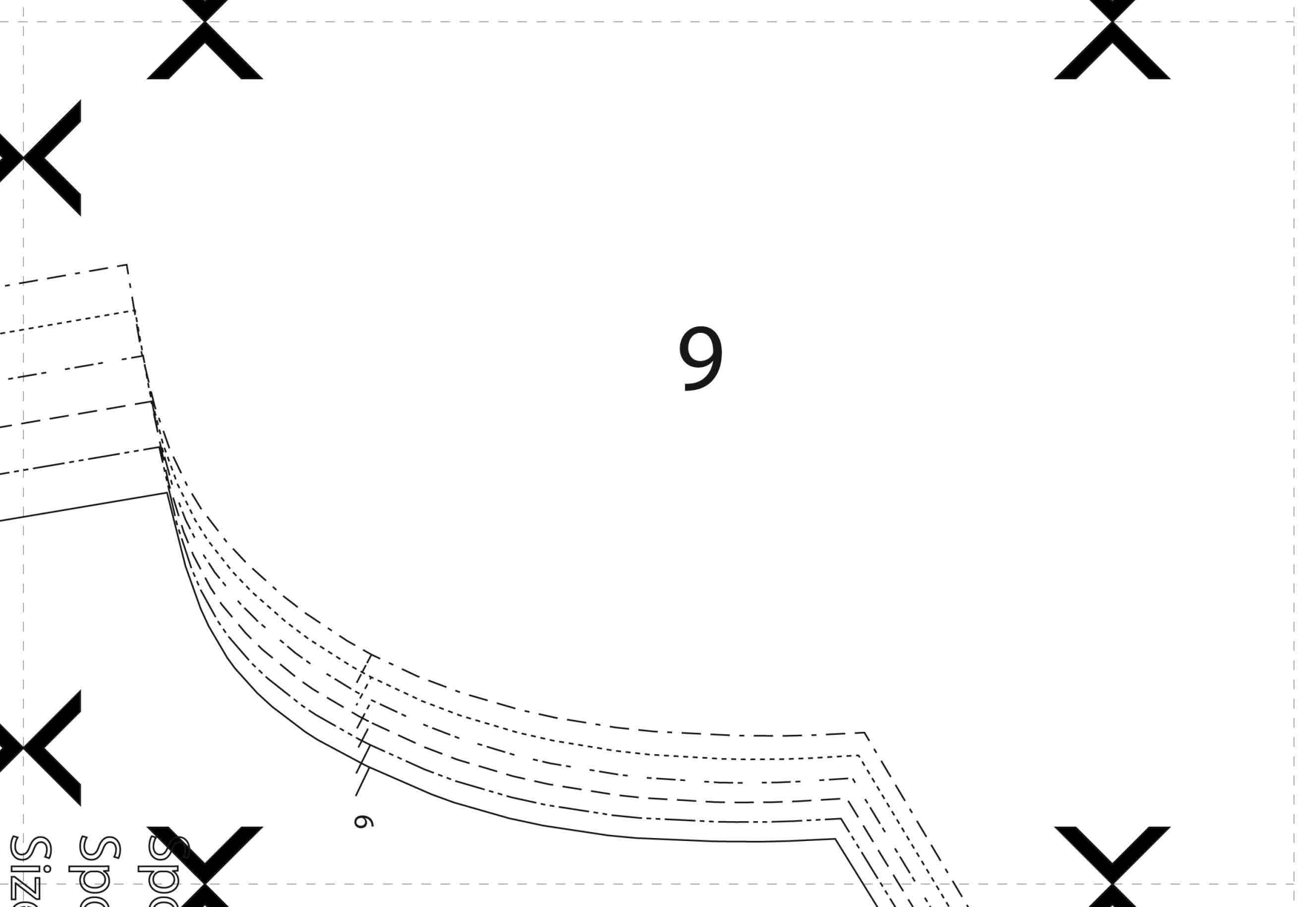
Back

cut

1x1

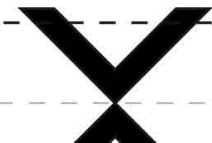
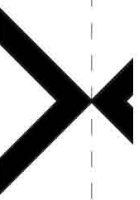
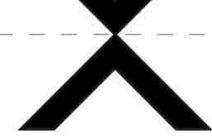
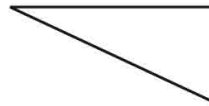
© b

8



10

grainline
Fadenlauf



Size 34-44 / Grösse 34-44

2

Back / Rückenteil

cut on fold of fabric /

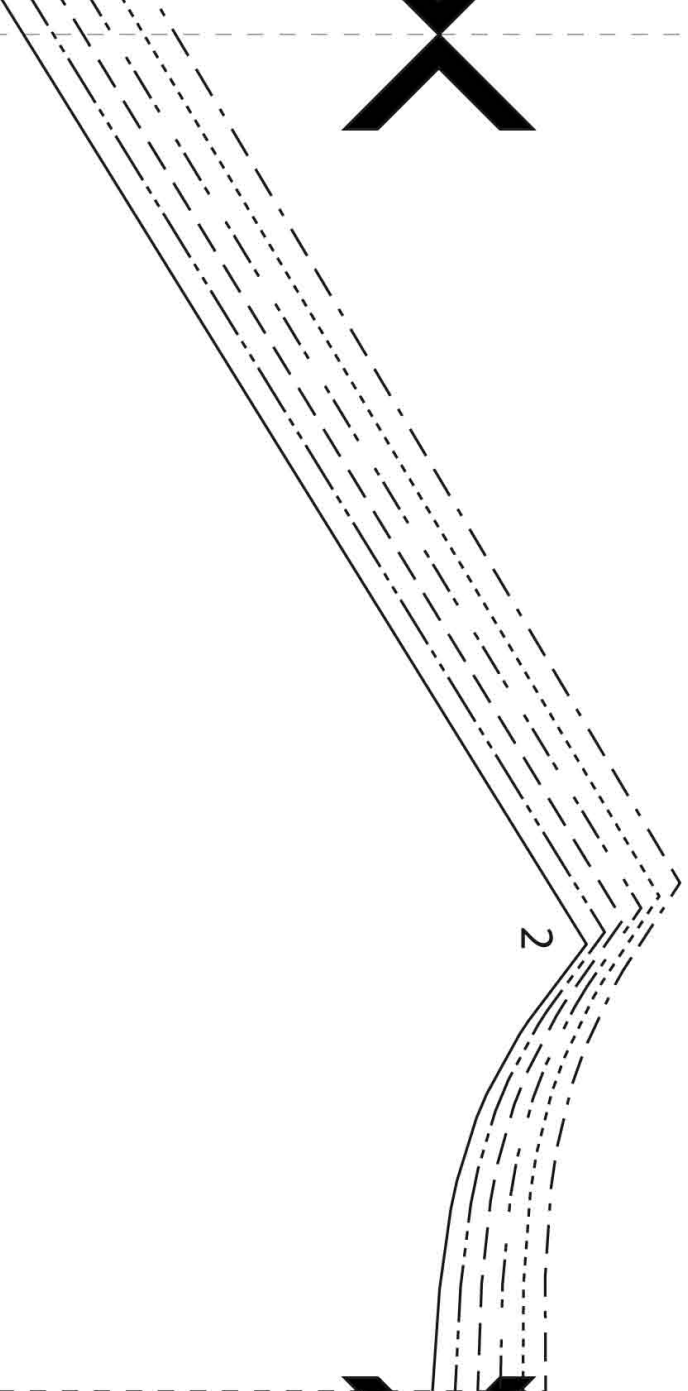
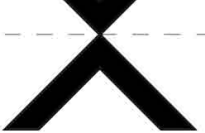
cut on fold of fabric /

cut on fold of fabric / Stoffbruch

by Black Snail Patterns

11

cut on fold of fabric / Stoffbruch



12



port blouse 1900

portbluse 1900

size 34-44 / Grösse 34-44



Sport blouse 1900

Sportbluse 1900

8

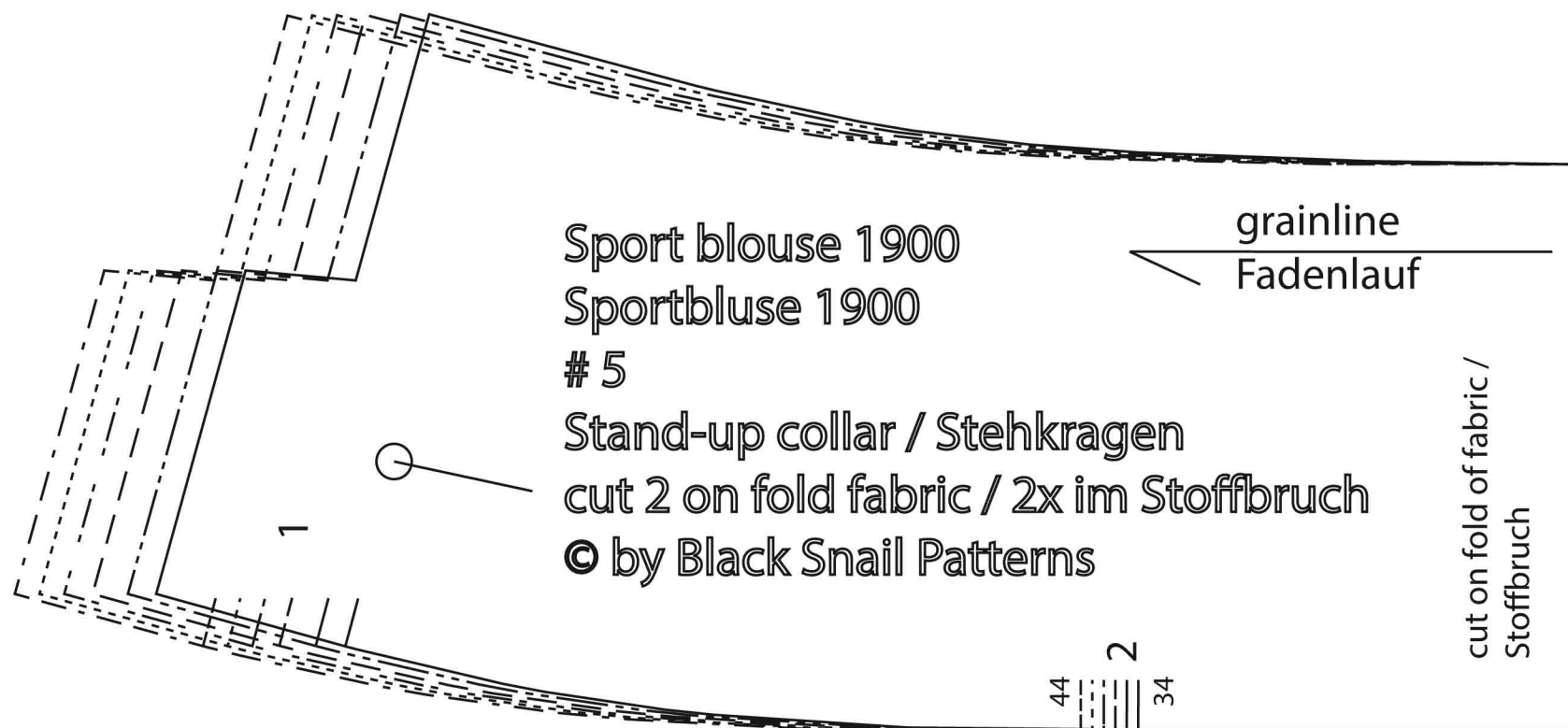
grainline

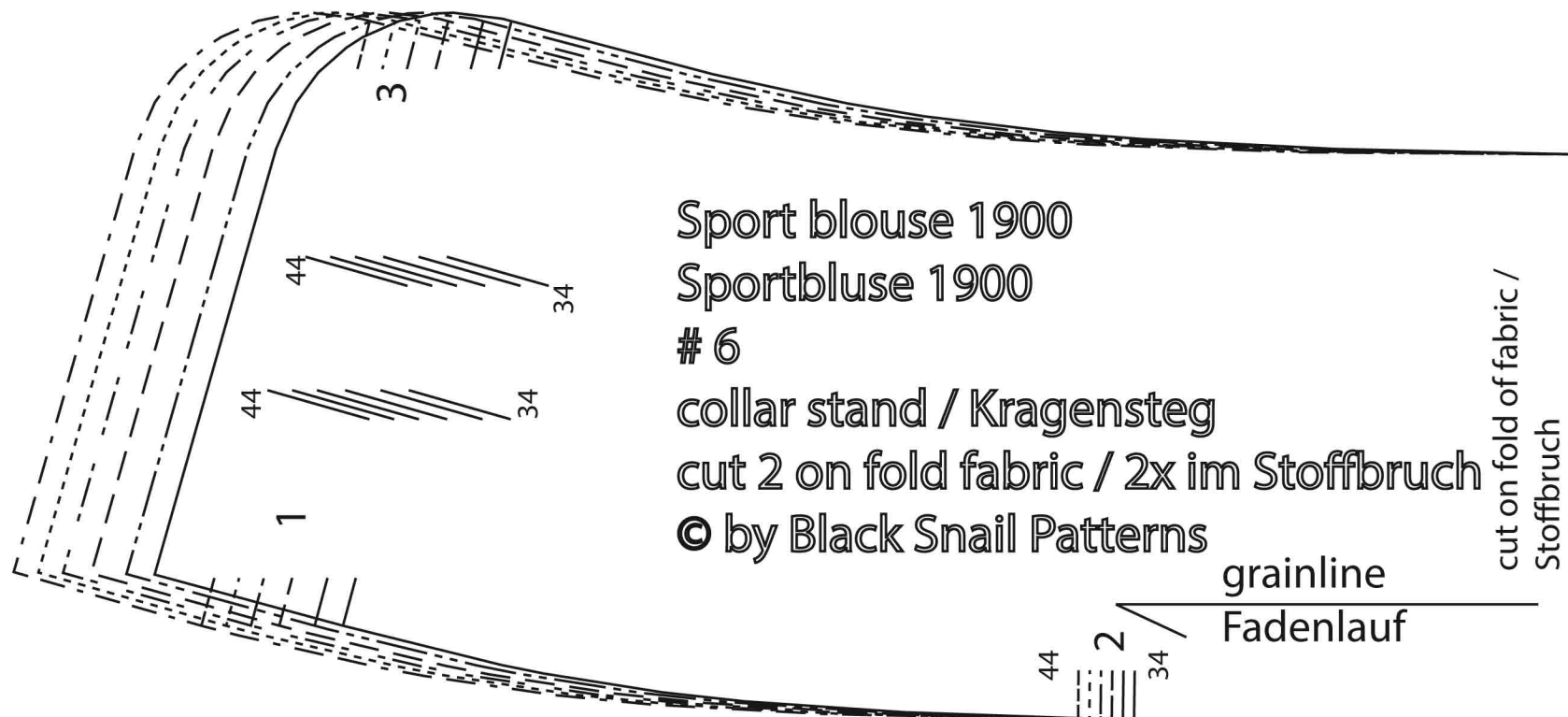
Fadenlauf

placket / Schlitzblende

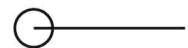
cut 2 one size for all / 2x gleiche Größe für Alle

© by Black Snail Patterns









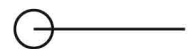
Sport blouse 1900

Sportbluse 1900

4

cuff / Manschette

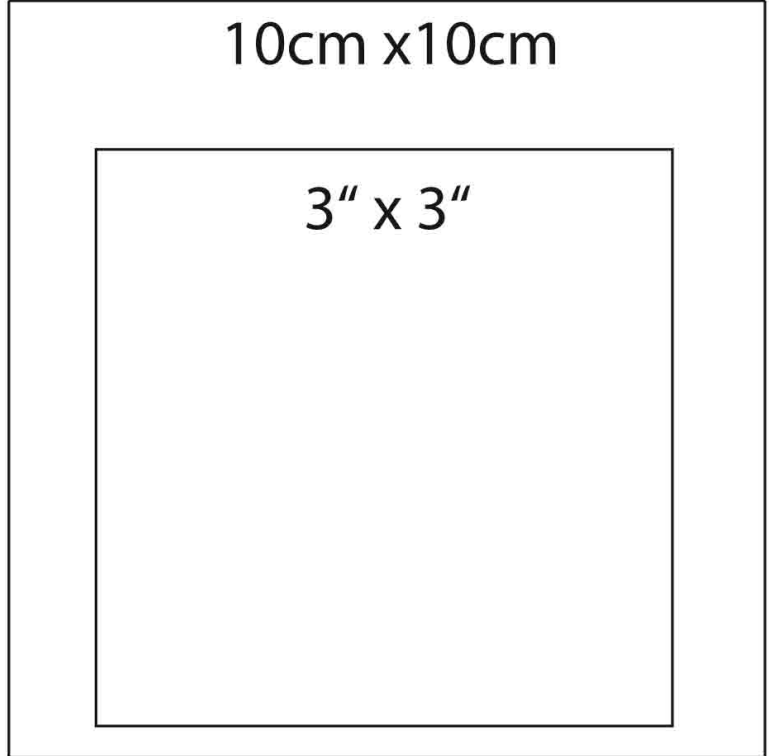
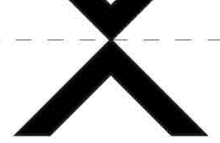
cut 2 on fold fabric / 2x im Stoffbruch



© by Black Snail Patterns

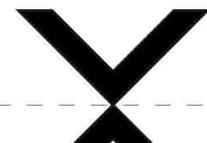
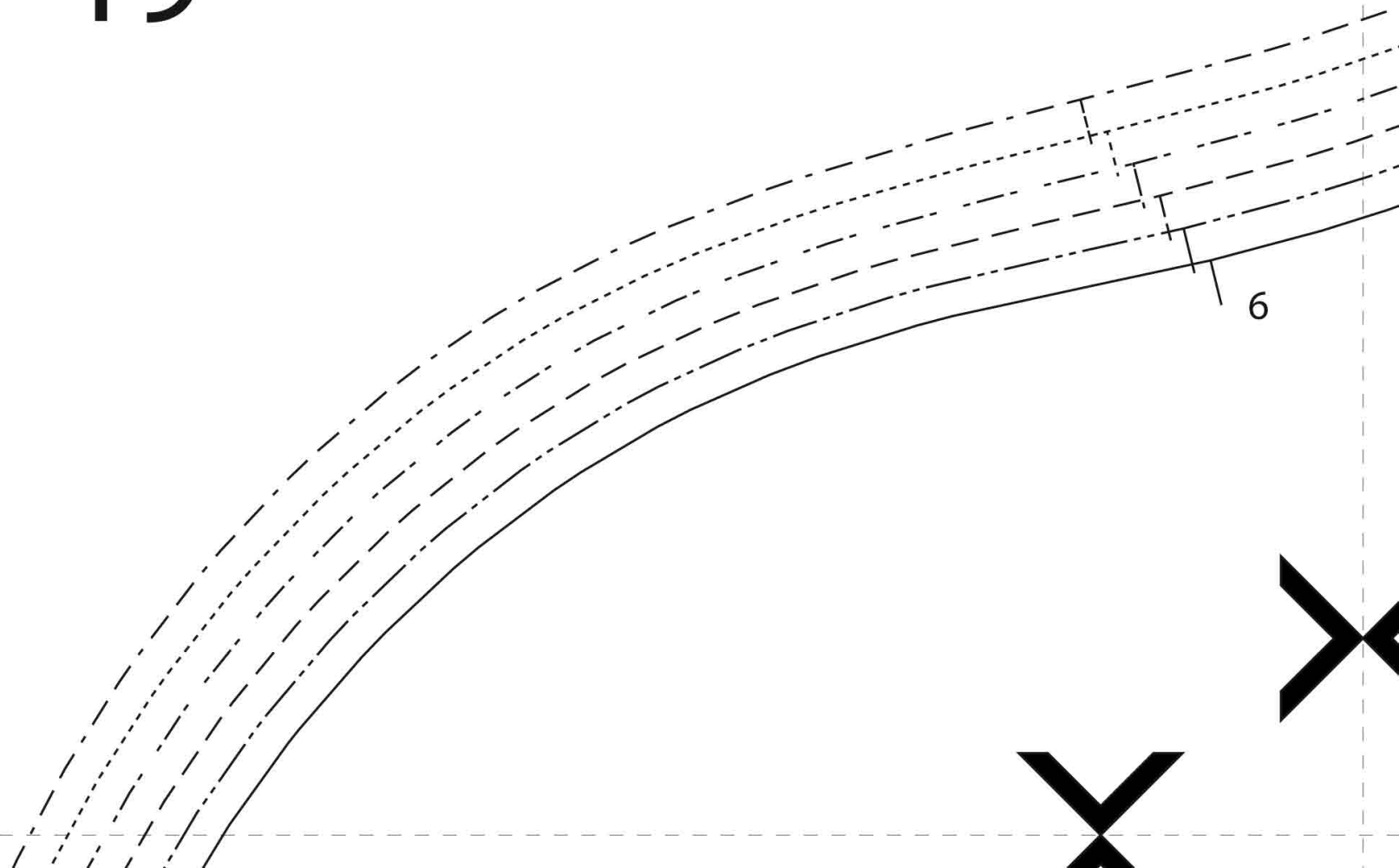
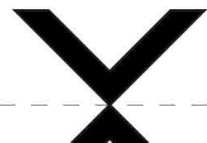
grainline

Fadenlauf

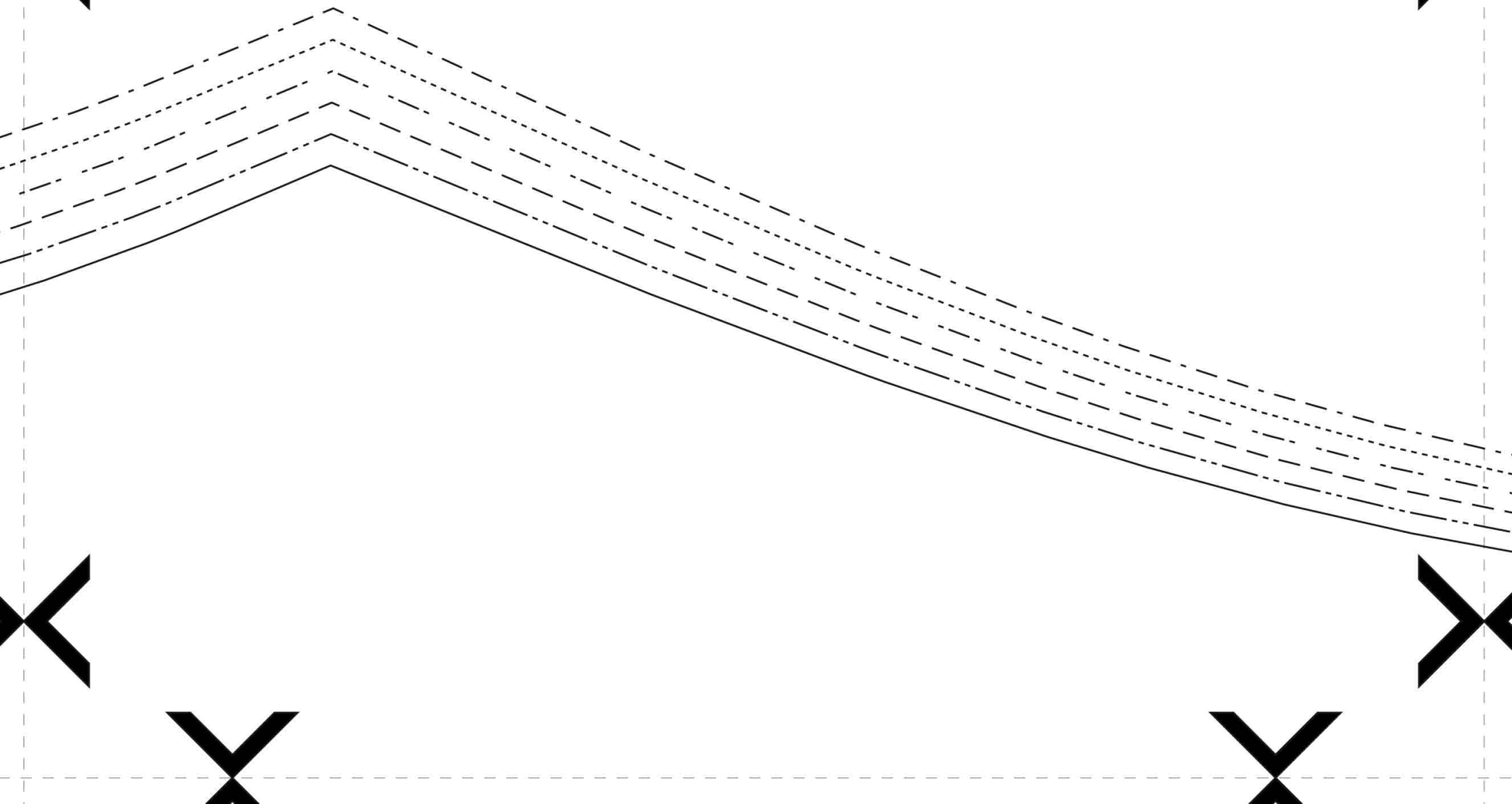
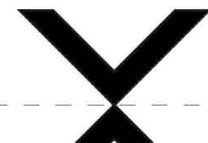
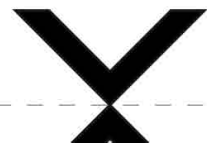
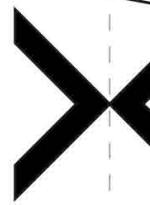
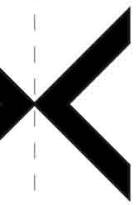


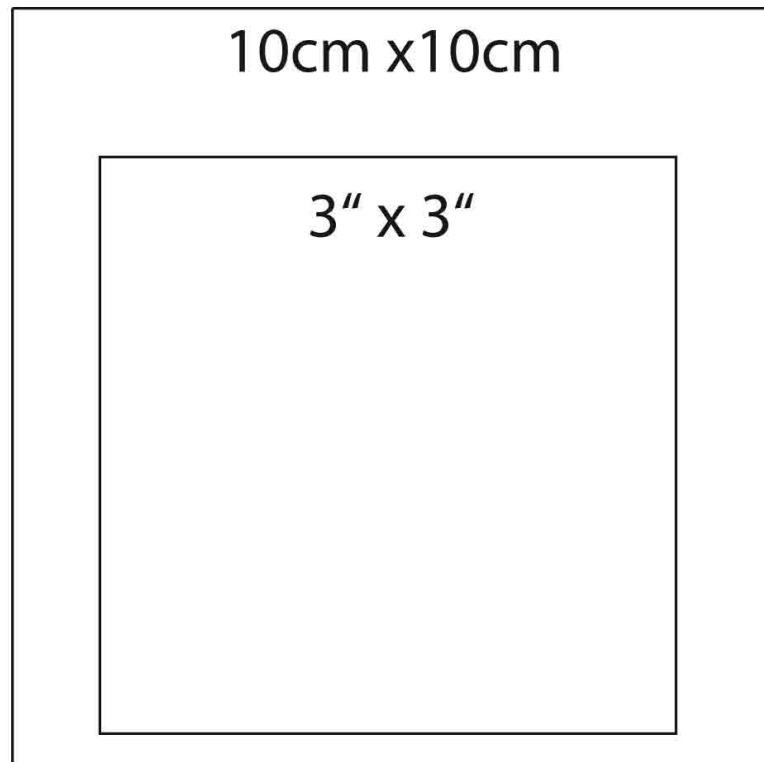
- _____ 34 / 8
- 36 / 10
- 38 / 12
- 40 / 14
- 42 / 16
- 44 / 18

19



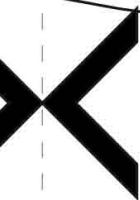
20

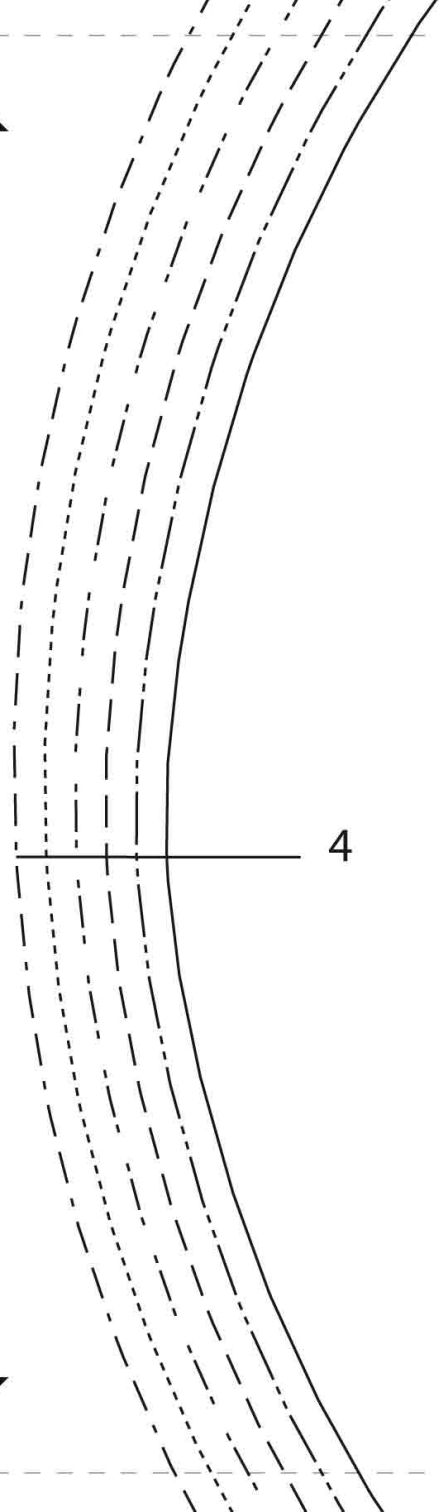
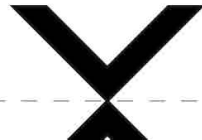
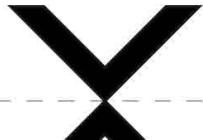
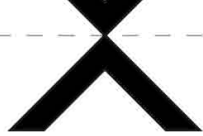




- _____ 34 / 8
- 36 / 10
- 38 / 12
- 40 / 14
- 42 / 16
- 44 / 18

21





22

Sport blouse 1900

~~Sportblouse 1900~~

~~Sportblouse 1900~~

Size 34-44 / Grösse 34-44

Size 34-44 / Grösse 34-44

3

Sleeve / Ärmel

cut 2 / 2x

© by Black Snail Patterns

23

grainline
Fadenlauf

24

12cm / 4 3/4"

slit / Schlitz

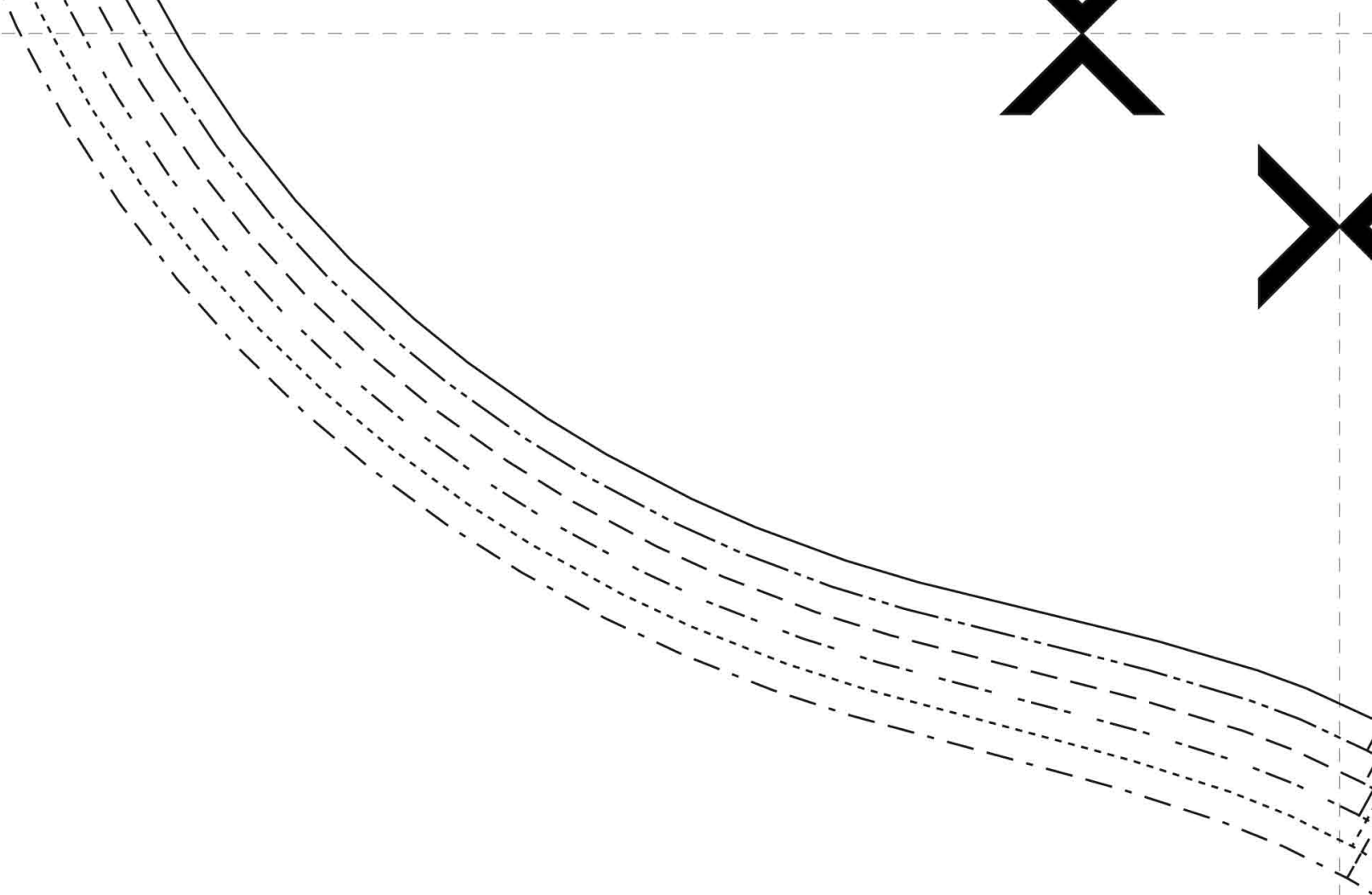
7

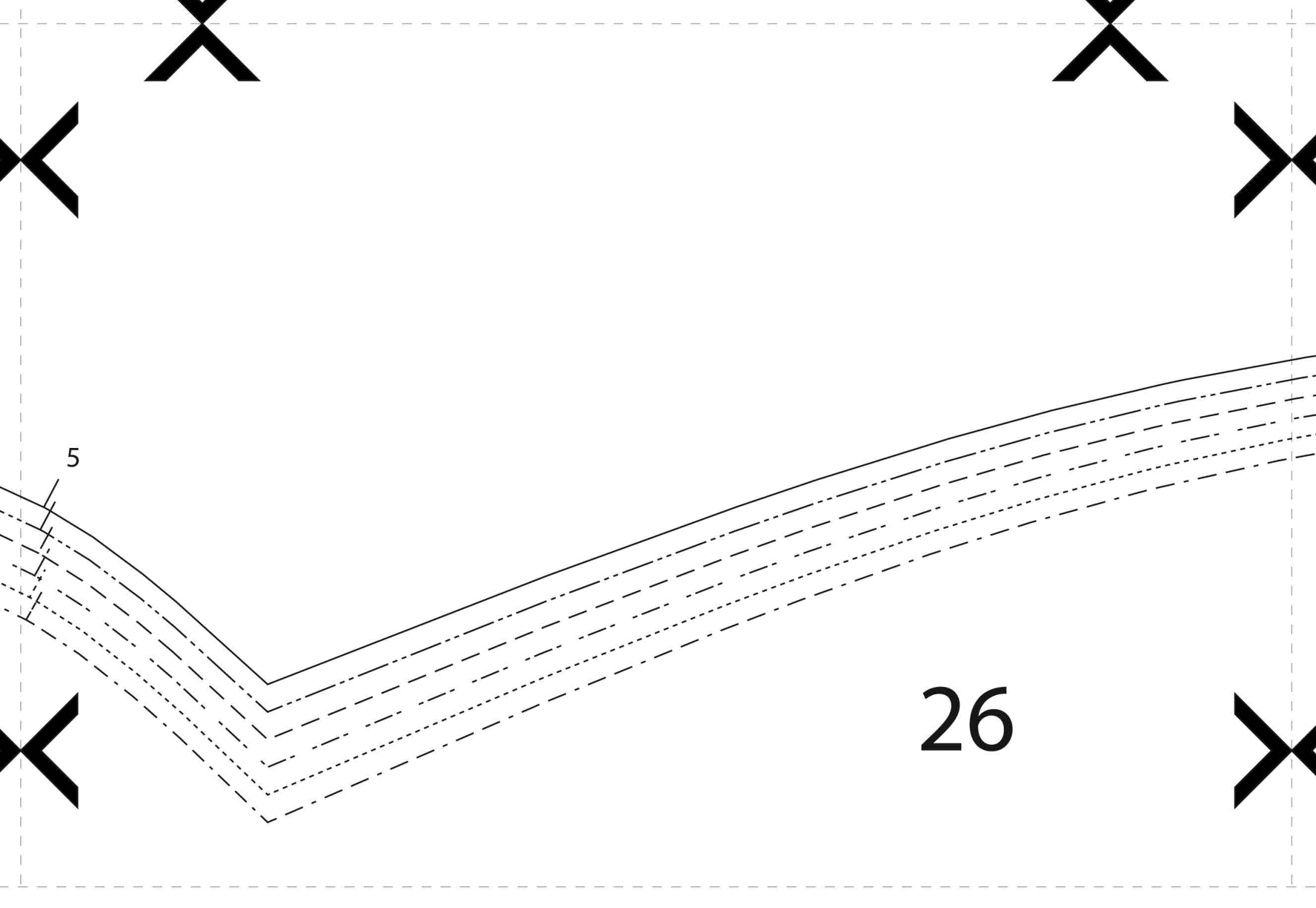
Fold / Falte

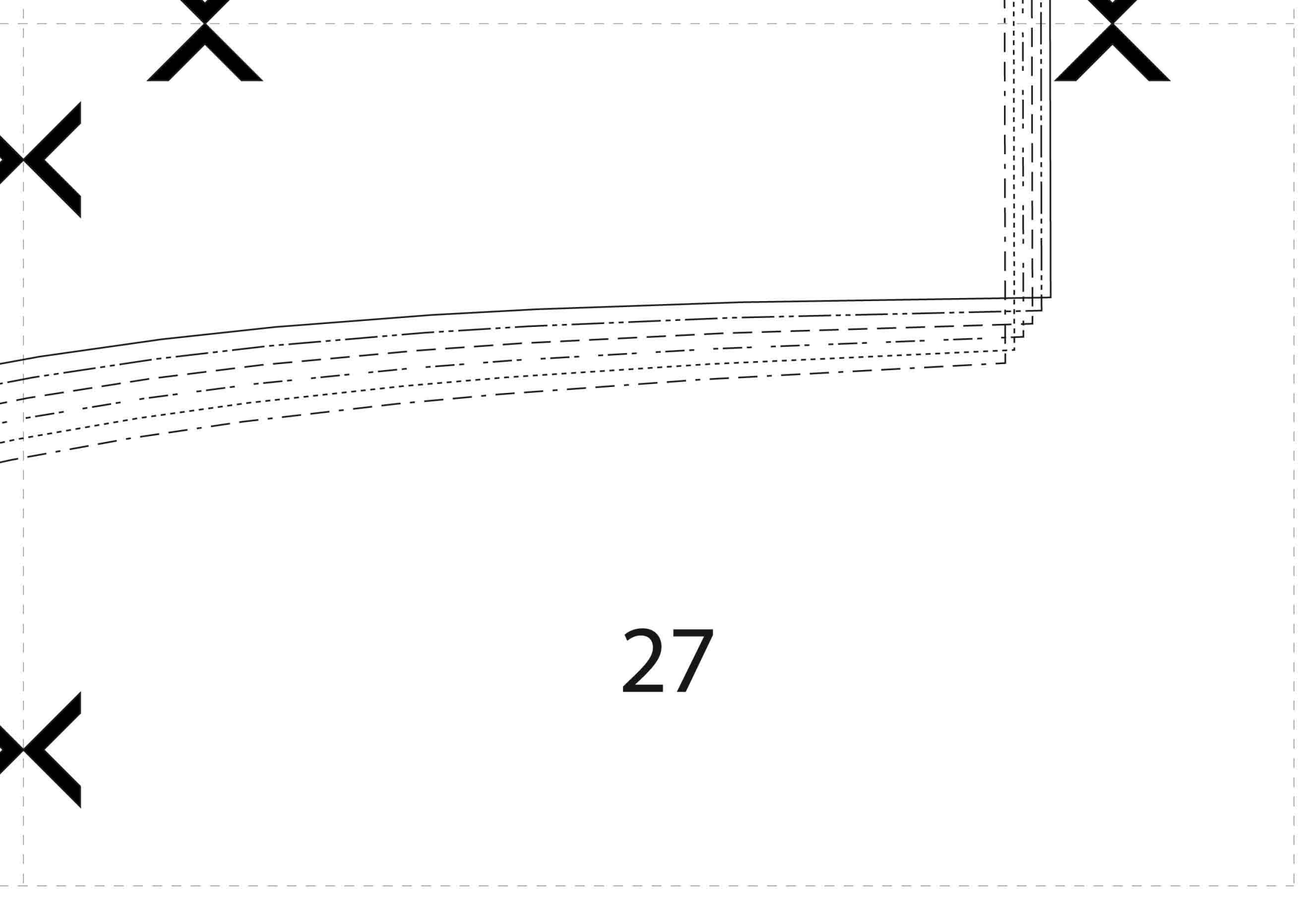
7



25







27