

Shirtwaist about 1890
with two collar types



Shirtwaist about 1890

The unlined Shirtwaist became popular in the late 1880's.

Women began to work, sport as Tennis or cycling became popular even for Ladies. The shirtwaist allowed more place for movement as conventional waists.

Skirts too lost their trains and draperies.

The 1890's shirtwaist typically had a high men style collar and was worn with cravats and bow ties.

The gigot sleeve expanded to enormous dimensions 1895, cut narrow at the underarm.

Striped fabrics were popular, the shirtwaist was made out of silk, or white cotton for working women.

Your pattern comes with two different types of collars, a stand-up collar and a round collar with a high collar stand, and two different types of cuffs, one rounded, and the other squared.

The collar should be narrow like the collar of a men's shirt.

Shirtwaists made of fine material like silk often had collar and cuffs made out of more durable white cotton or linen.

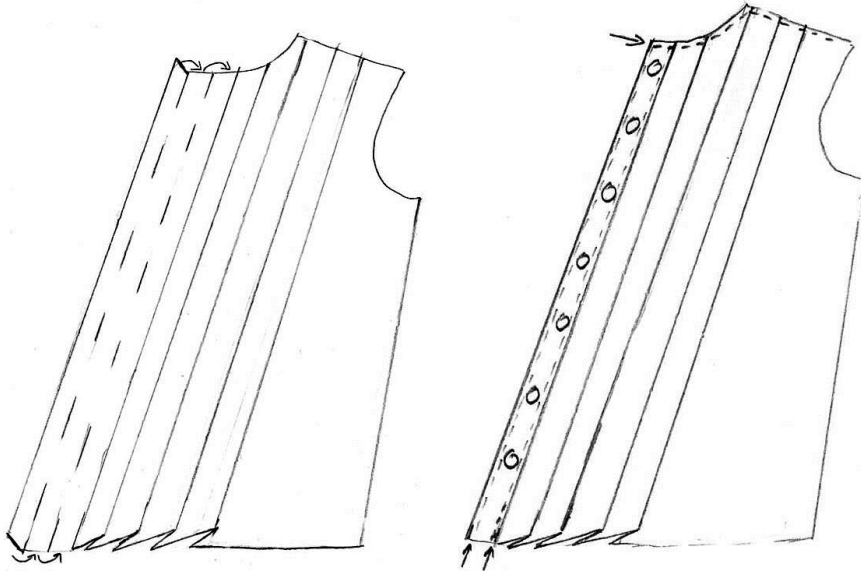


Picture: John Oxley Library, State Library of Queensland

1. Prepare the front part:

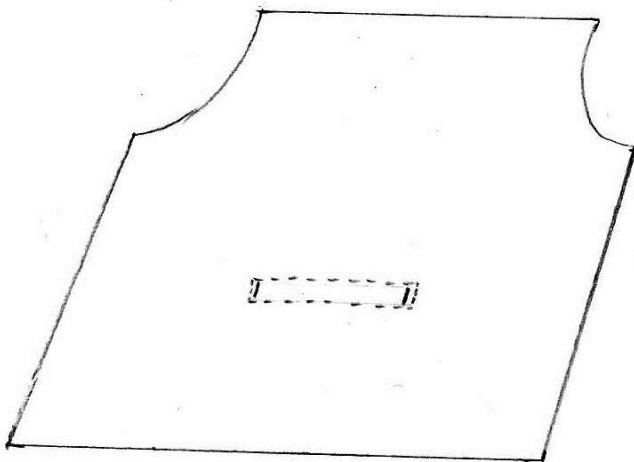
For the button facing turn the fabric 2 times at the markings to the right side. Topstitch the button facing on both sides. Width of the finished button facing: 1" (2,5cm)

Mark exactly the position of the folds and iron them. The folds will open to the side. Baste the folds on neckline and shoulder.



2. Prepare the back part:

Sew buttonholes at the markings at the right side, length of buttonhole about 3/8" (1cm). Then sew a strap to the left side for the drawstring. Width of the finished tunnel: 5/8" (1,5cm), length: about 8" (20cm)

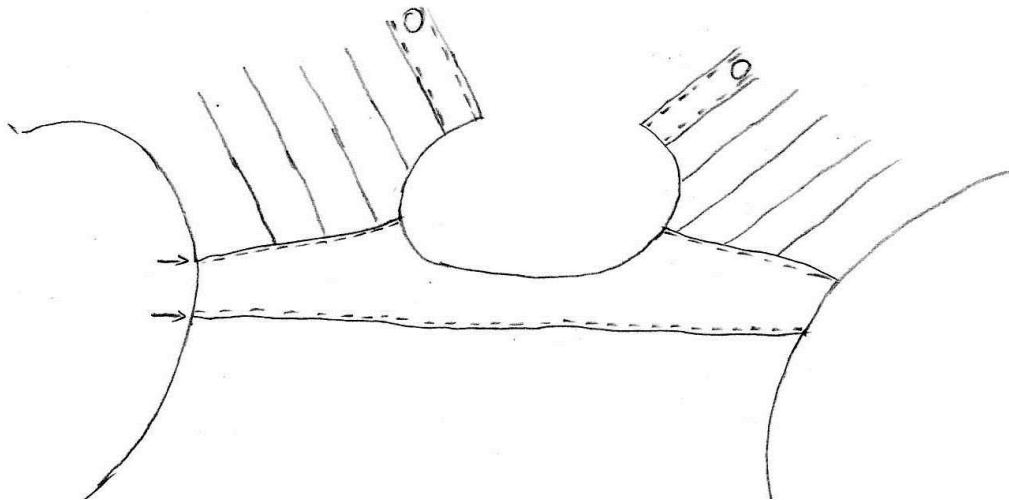


3. Shoulder yoke:

Lay the front part between the two parts of the shoulder yoke and stitch. Cut back seam allowance and iron.

Pin the back part with right sides together to the upper part of the shoulder yoke. Cut back seam allowance. On the inner part of the shoulder yoke turn in the seam allowance and iron. Pin it exactly to the seam of the upper part. Now you can sew on by hand or catch the material underneath by topstitching the shoulder yoke from the right side.

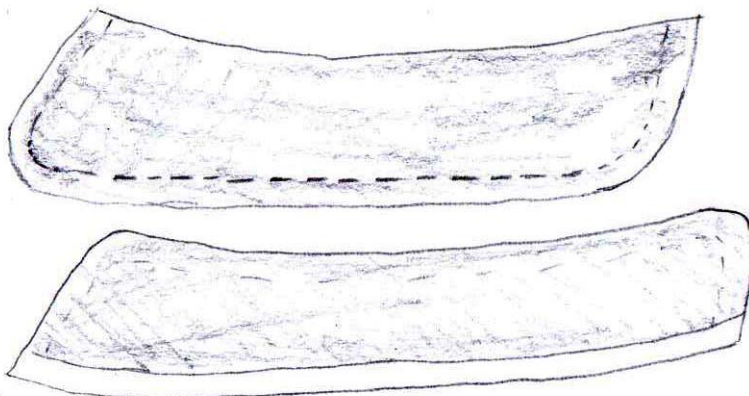
Iron and topstitch the shoulder yoke.



4. Collar:

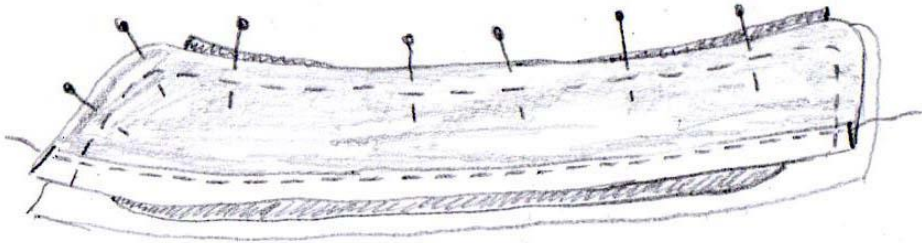
Interface the inner collar stand and the upper Collar. On the collar stand cut the facing without seam allowance for the neck seam.

On the inner collar stand turn in the seam allowance at the neck seam and stitch the seam allowance onto the collar stand. Cut back seam allowance.

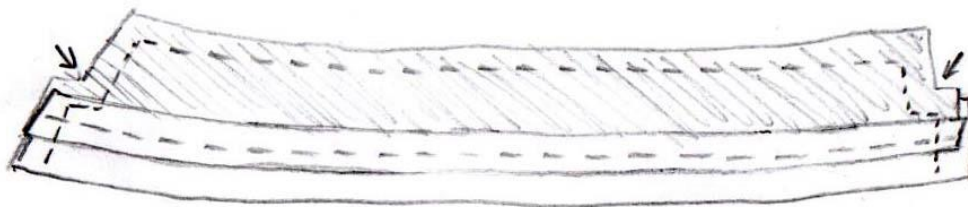


Sew upper and under collar pieces together, cut back seam allowance and turn inside out. Iron and topstitch if wanted.

Put the collar between the two pieces of the collar stand and stitch. Cut back seam allowance, turn inside out and iron.

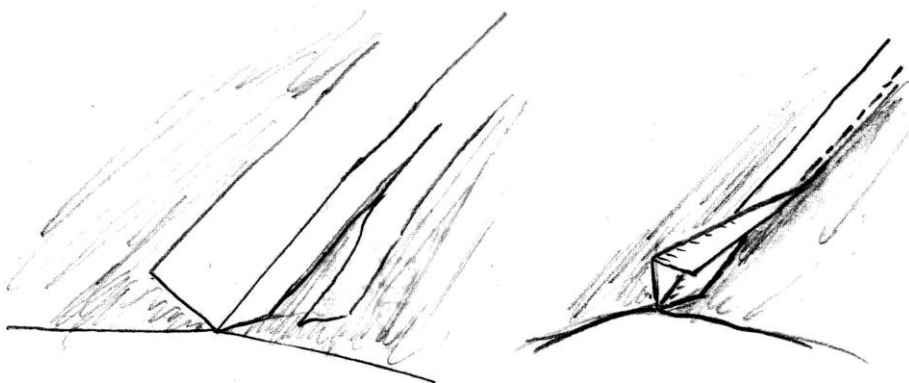


The stand-up collar is done the same way as the collar stand.



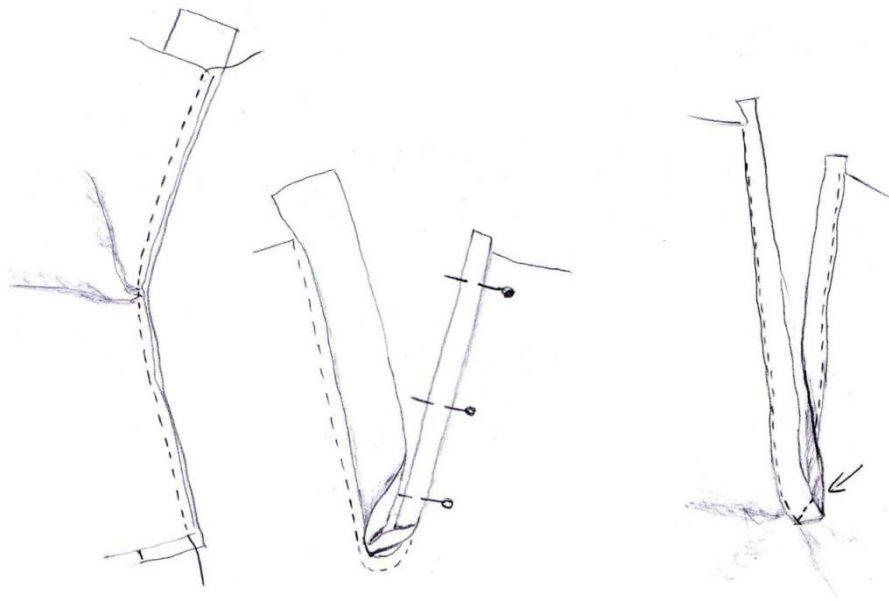
Now sew the collar to the neckline. Cut back seam allowance, cut in seam allowance at curves. Sew on the inner collar stand by hand.

Sew side seams, the best result you will get with a flat fell seam. After sewing the parts together cut back the seam allowance just on one side, turn over the other seam allowance and topstitch.



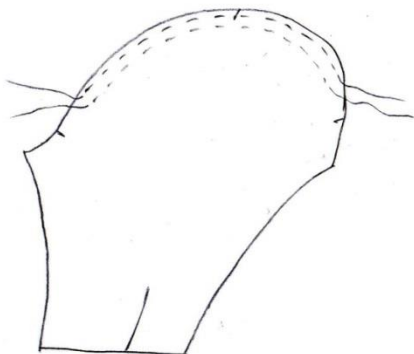
5. Sleeves

Cut the slits and sew on the right side a strap with a width of 1" (2,5cm) and double length of slit. (using a striped cloth it has to be on the straight grain, other fabrics you can use a bias tape). For sewing you need to pull the slit straight and take care not to sew in a lots of little folds at the slit end. Pull the strap to the left side, turn in seam allowance and pin it a little bit overlapping the stitching done before. Turn to the right and stitch exactly on the stitching of the strap catching the material underneath. For finishing stitch the strap on the strip end in an angle of 45° as shown below (arrow).



At the sleeve head sew to rows of gathering stitches. Then close the sleeve seam, if wanted finish with a flat fell stitch (it will be a little bit tricky doing the flat fell seam on a sleeve having a narrow tube underneath your presser foot). Prepare the cuffs interfacing the upper piece. Sew on turning in the strap on the upper part of the slit, topstitch.

Sew in sleeves regarding markings. You can serge the seam allowances the modern way with a zigzag or historically correct with a bias tape.



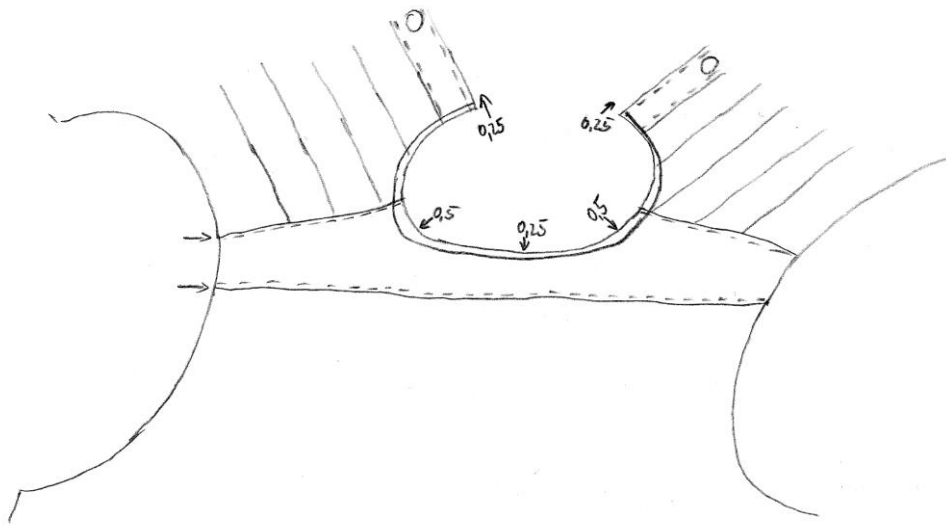
7. Last things to do:

Turn in the hem two times and stitch, with a width of $5/8''$ (1,5cm).

Sew buttonholes and buttons.

Pull a cotton tape with a length of 20'' (50cm) through the tunnel.

Always do a mock-up first. Especially the collar is quite narrow. Lengthen the collar at the centre back as needed, widen the neckline.



Size Chart

General information for historical patterns:

For all historical patterns which would be worn over a Corset, waist circumference is reduced, according to the next smaller size. For Example you wear a size 14 with a bust measurement of 36" and a natural waist of 31" a waist reduction about 2" is already considered.

Please always do a mock-up first.

EUR	34	36	38	40	42	44	46	48	50	52
US	8	10	12	14	16	18	20	22	24	26
Body height					66					
Bust	31,5	32,5	34	36	38	40	42	44	46	48
Waist	26	27,5	29	31	32	34	35,5	38	40	24,5
Hip	37	38	39	40,5	42	43	45	47	49	51
all measurements in inch										

[illegible]

Shirtwaist 1890 size 34-44

Recommended fabric: lightweight cotton

Fabric required: 2.3 yd. 55" wide / 210cm with a width of 140cm

Cotton tape 1/2 yd. / 50cm

Interlining, buttons

Pieces:

#1 front: cut 2

#2 back: cut 1 on fold of fabric

#3 shoulder yoke: cut 2

#4 sleeve: cut 2

#5 or #6 + #7 collar: cut 2 each

#7 or #9 cuff: cut 4

1/2" seam allowance included, hem 1" included

1,5 cm seam allowance included, hem 3cm included

Blusentaille 1890 Größe 34-44

Stoffempfehlung: Blusen- und Hemdenstoffe

Stoffverbrauch: 210cm bei 140cm Breite

Baumwollband: 50cm

Einlage, Knöpfe

Teile:

#1 Vorderteil: 2x

#2 Rückteil: 1x im Stoffbruch

#3 Schulterpasse: 2x

#4 Ärmel: x

#5 oder #6 + #7 Kragen: je 2x

#7 oder #9 Manschette: je 4x

1,5 cm Nahtzugabe enthalten, Saum 3cm

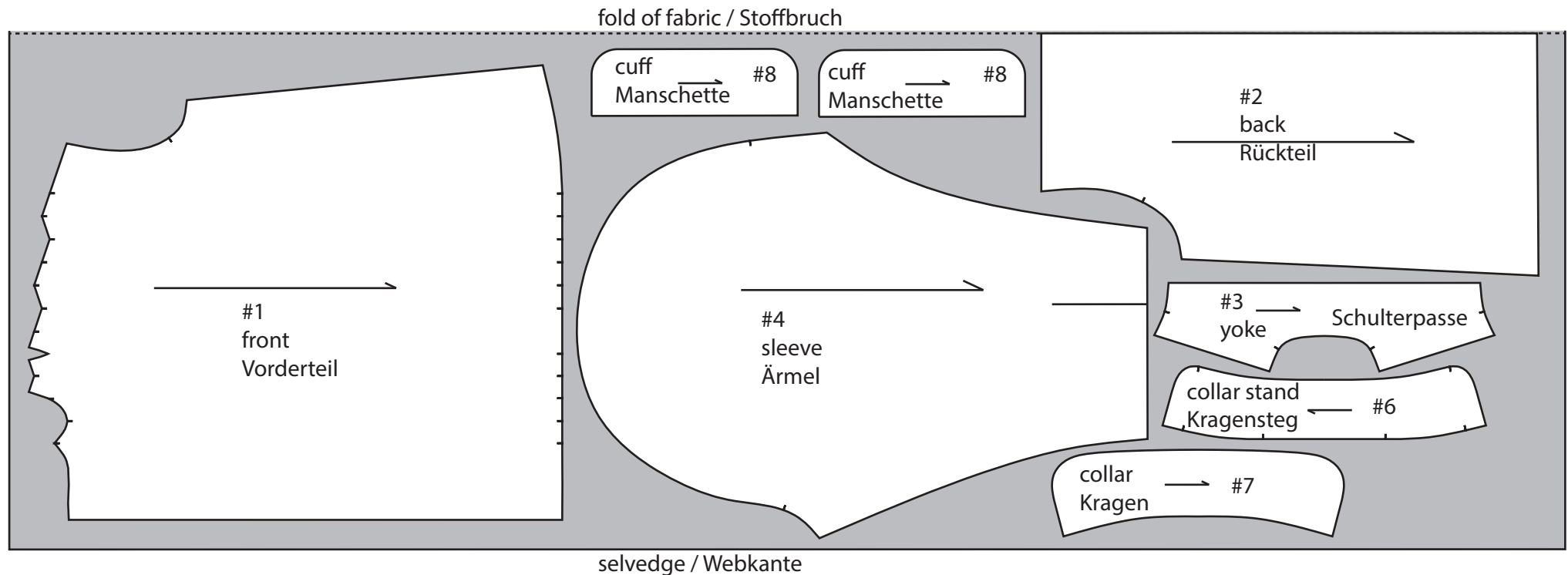


Diagram sheet #1

Übersichtsplan Bogen #1

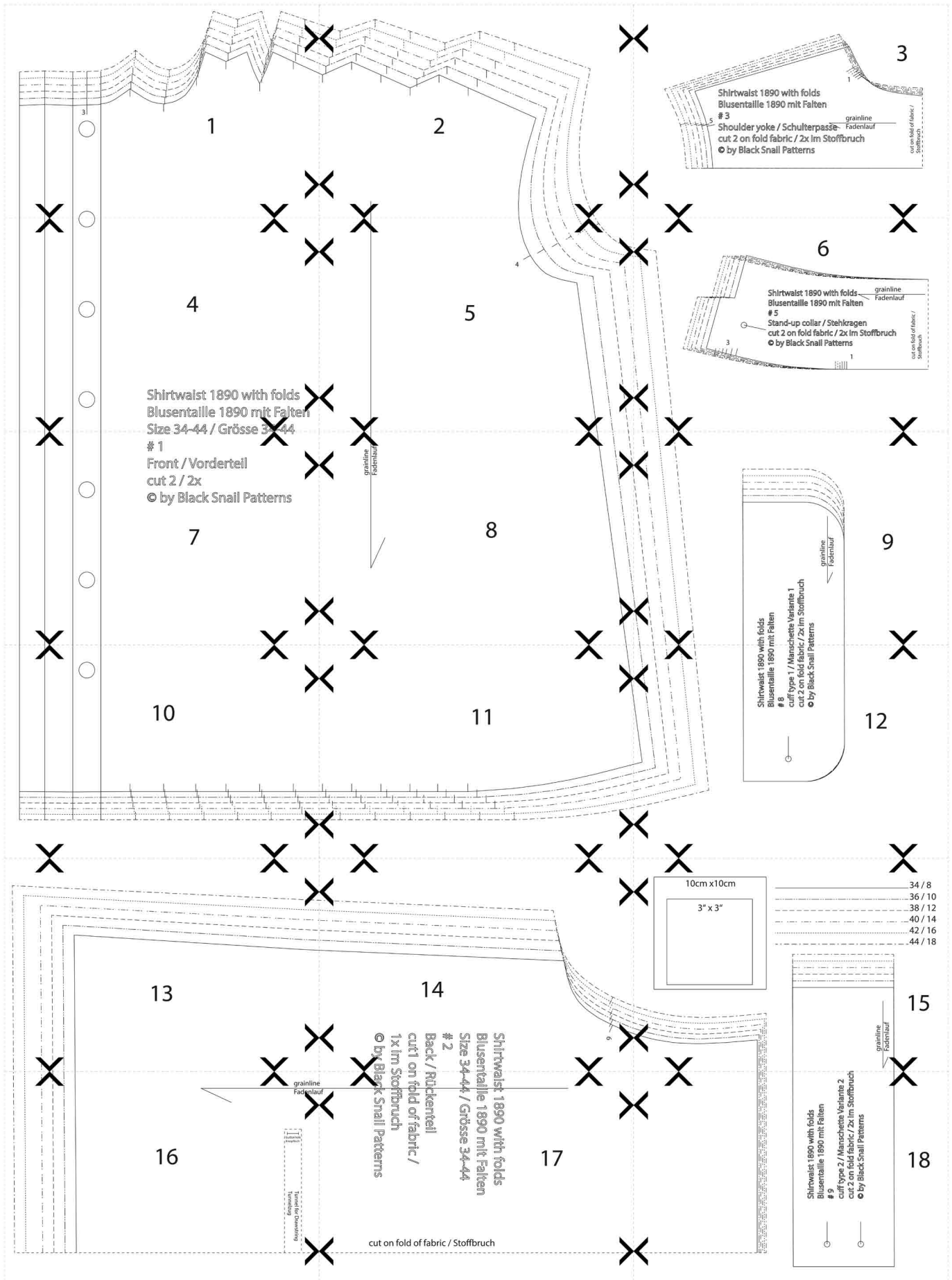
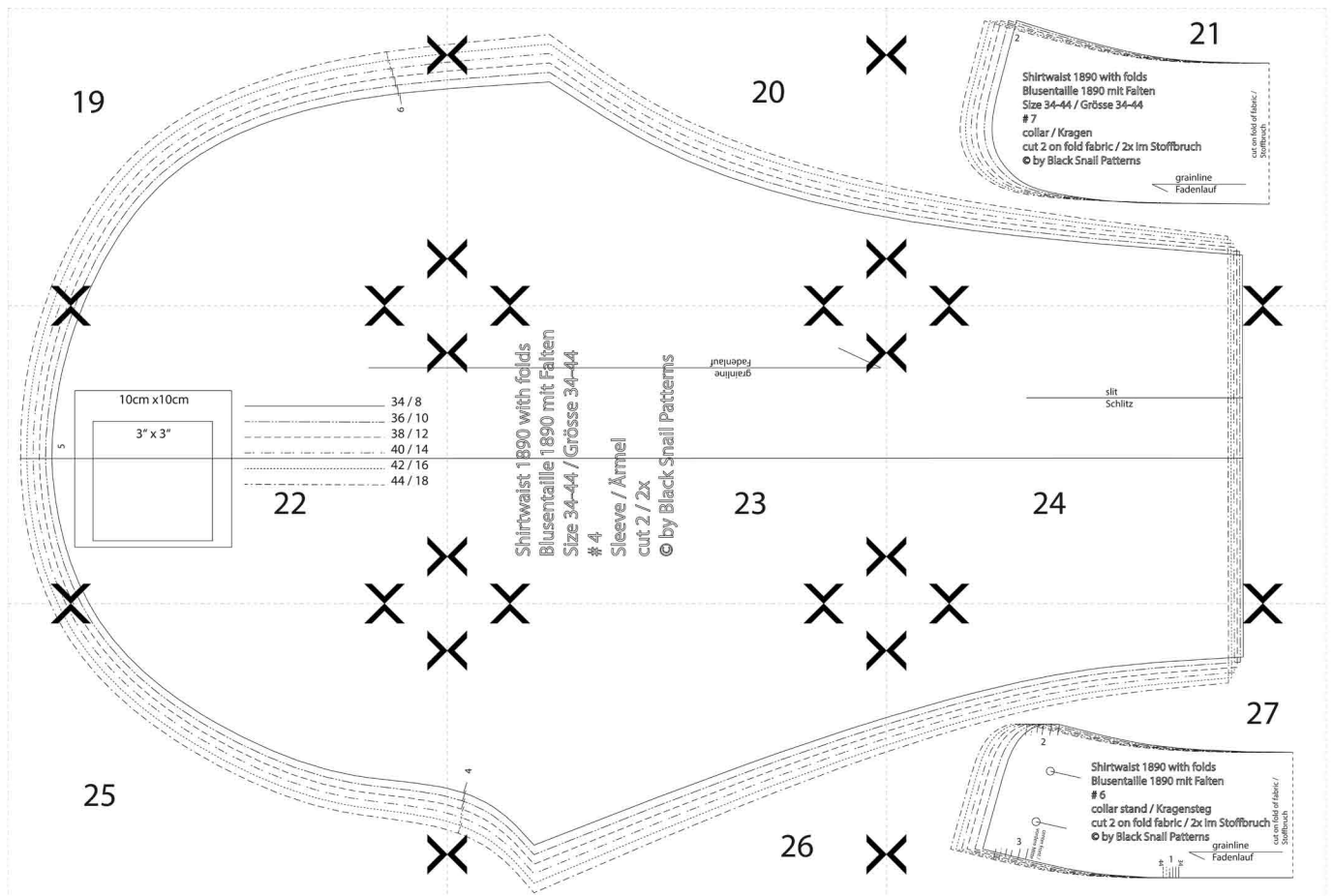
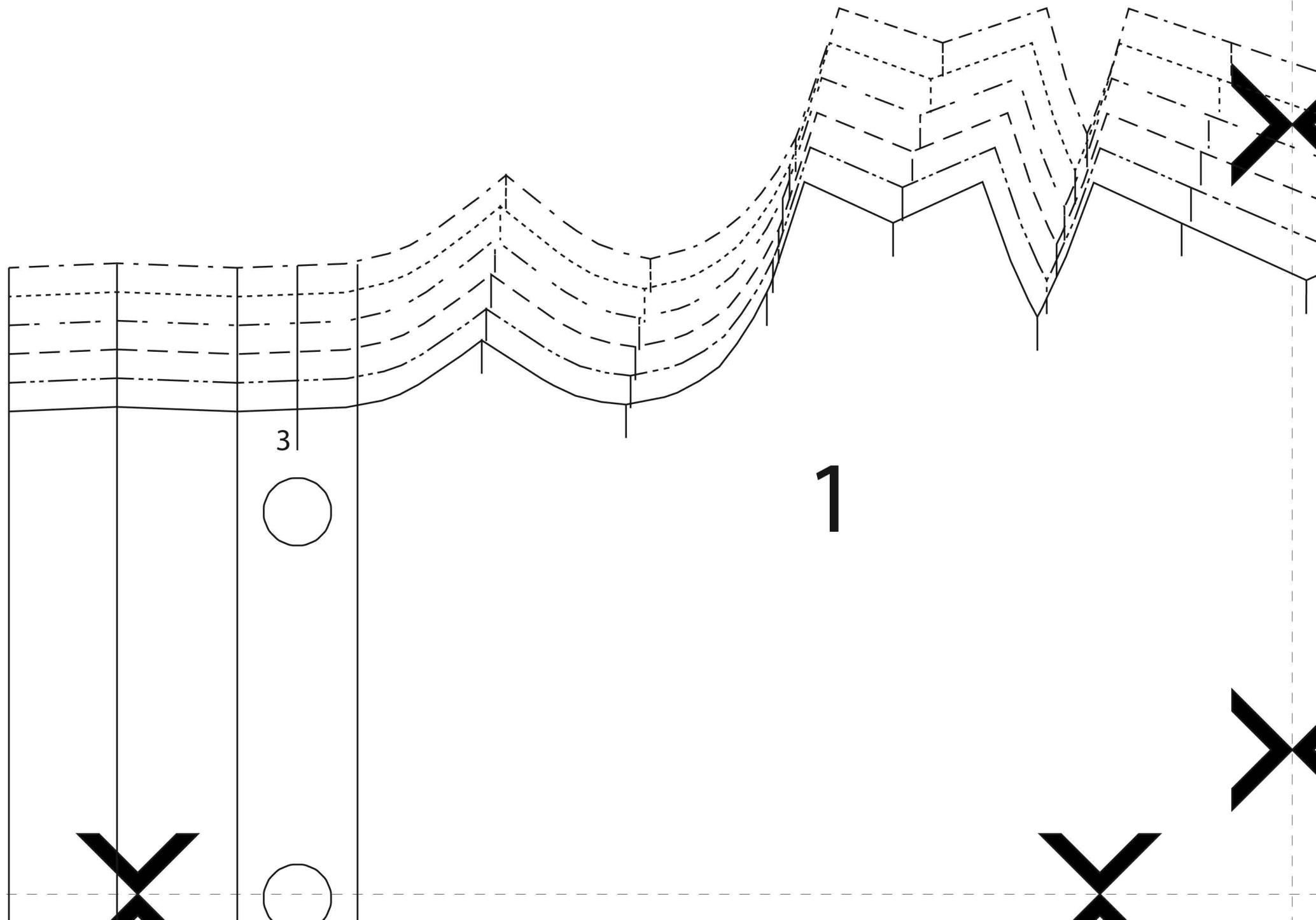
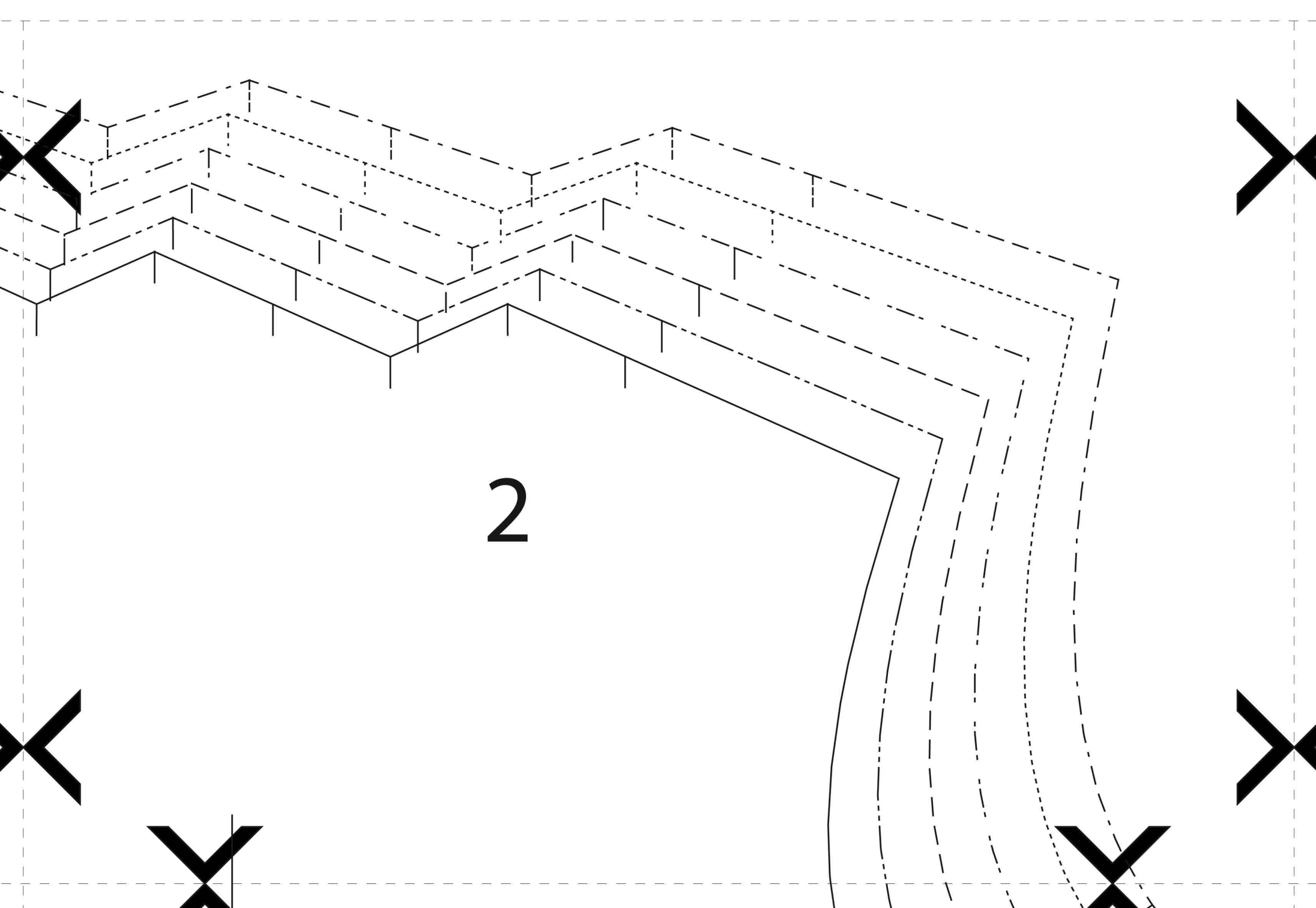


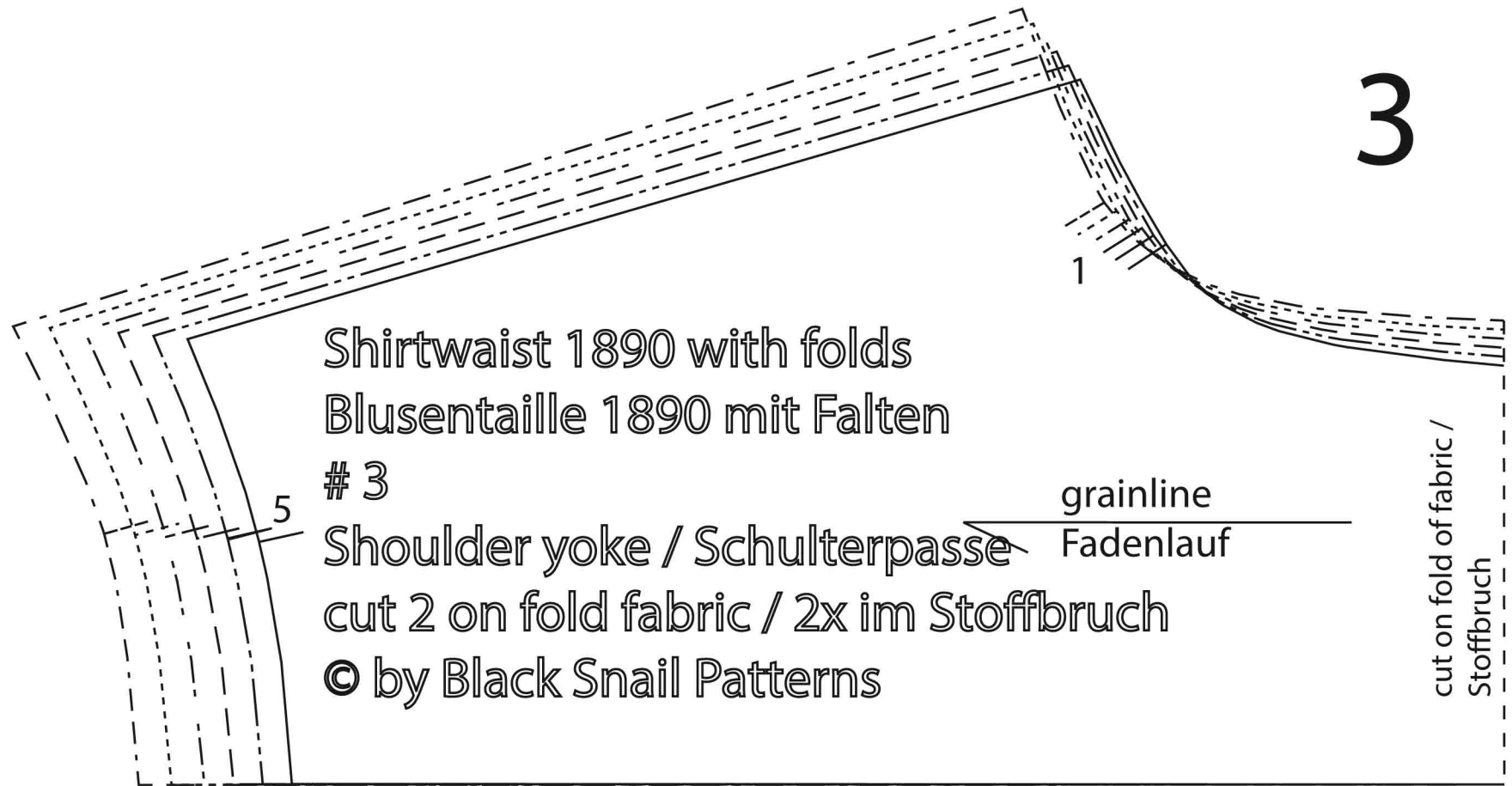
Diagram sheet #2

Übersichtsplan Blatt #2









Shirtwaist 1890 with folds
Blusentaille 1890 mit Falten

3

Shoulder yoke / Schulterpasse

cut 2 on fold fabric / 2x im Stoffbruch

© by Black Snail Patterns

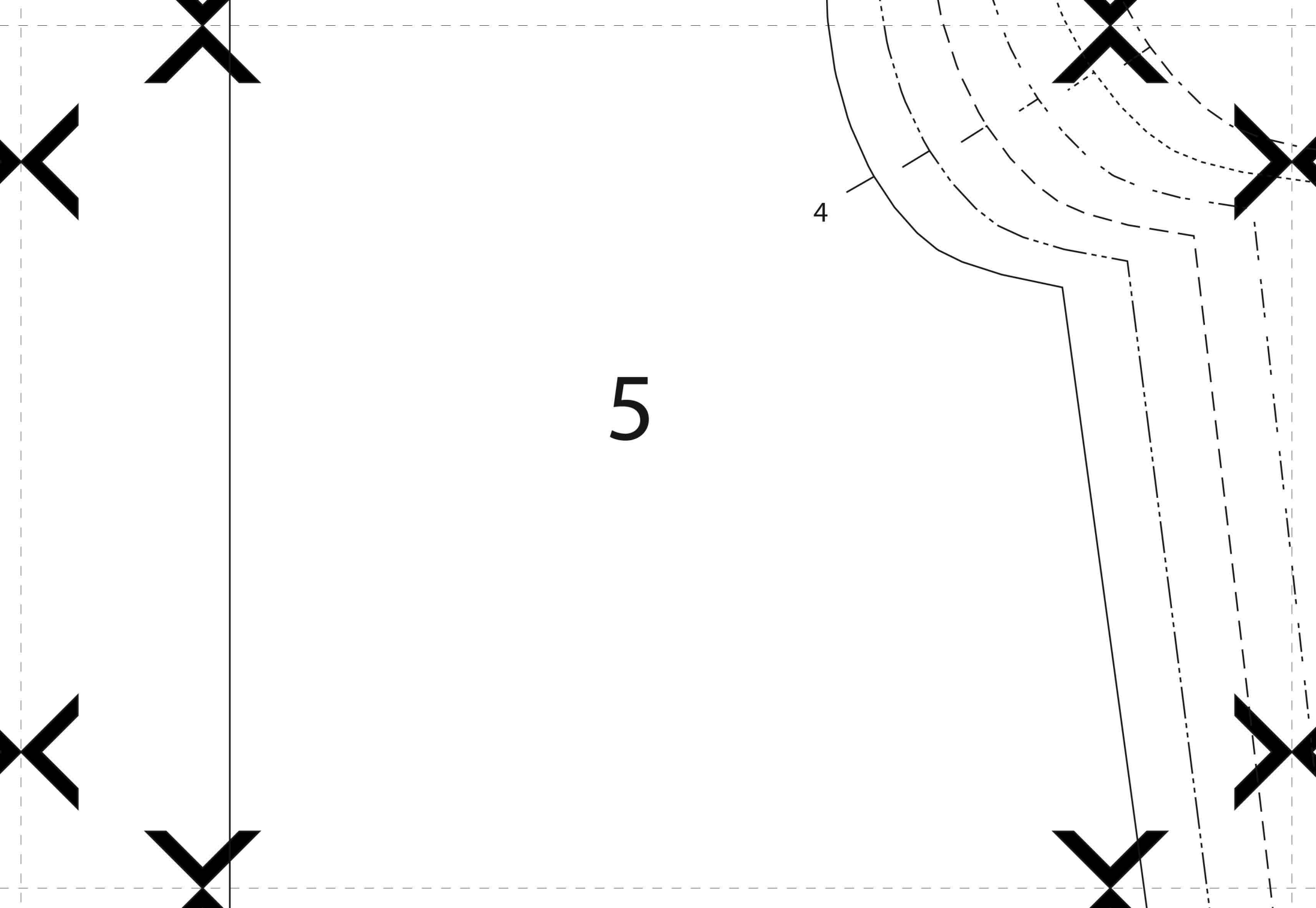
grainline

Fadenlauf

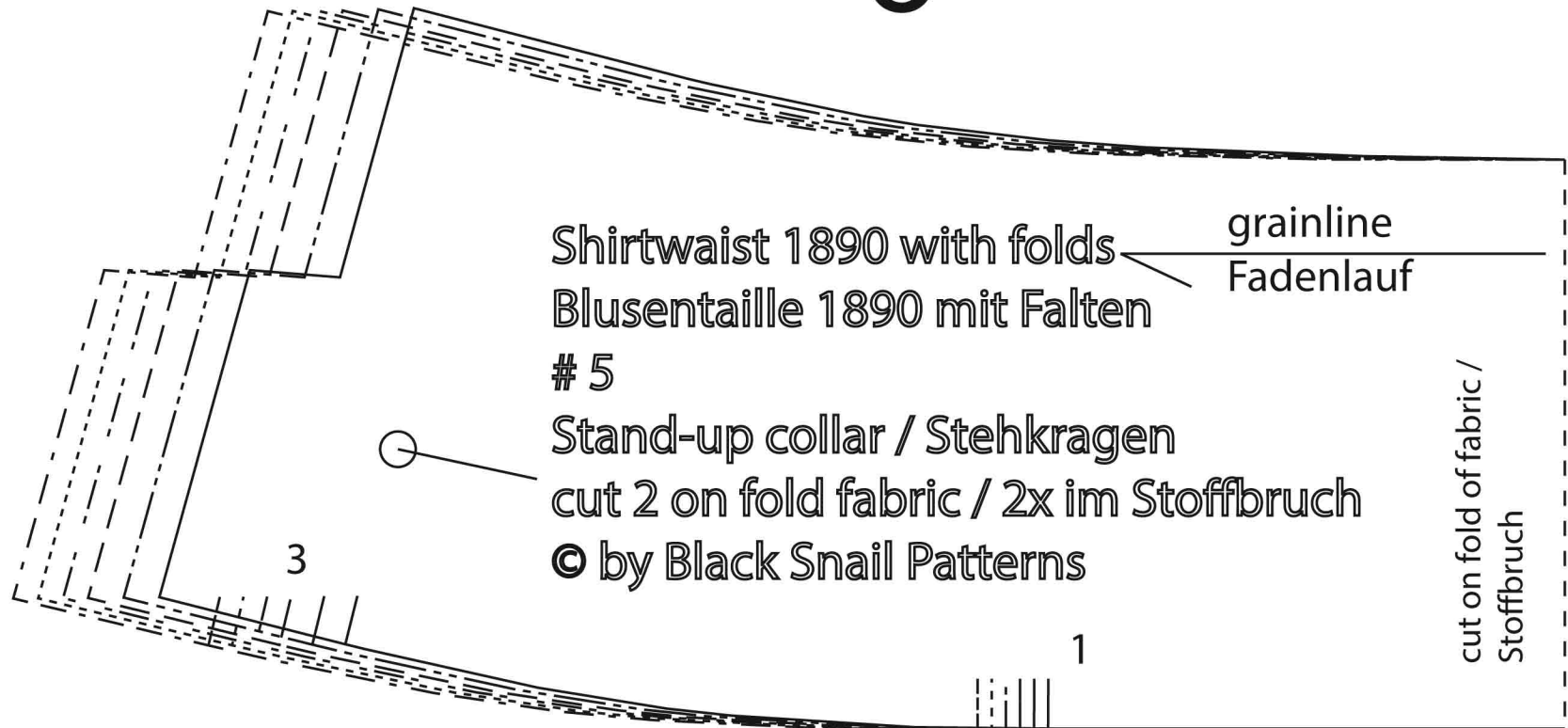
cut on fold of fabric /
Stoffbruch

4

Shirtwaist 1890 with folds
Blusentaille 1890 mit Falten
Size 34-44 / Grösse 34-44



6



Shirtwaist 1890 with folds
Blusentaille 1890 mit Falten
5

Stand-up collar / Stehkragen
cut 2 on fold fabric / 2x im Stoffbruch
© by Black Snail Patterns

grainline
Fadenlauf

cut on fold of fabric /
Stoffbruch

Size 34-44 / Grosse 34-44

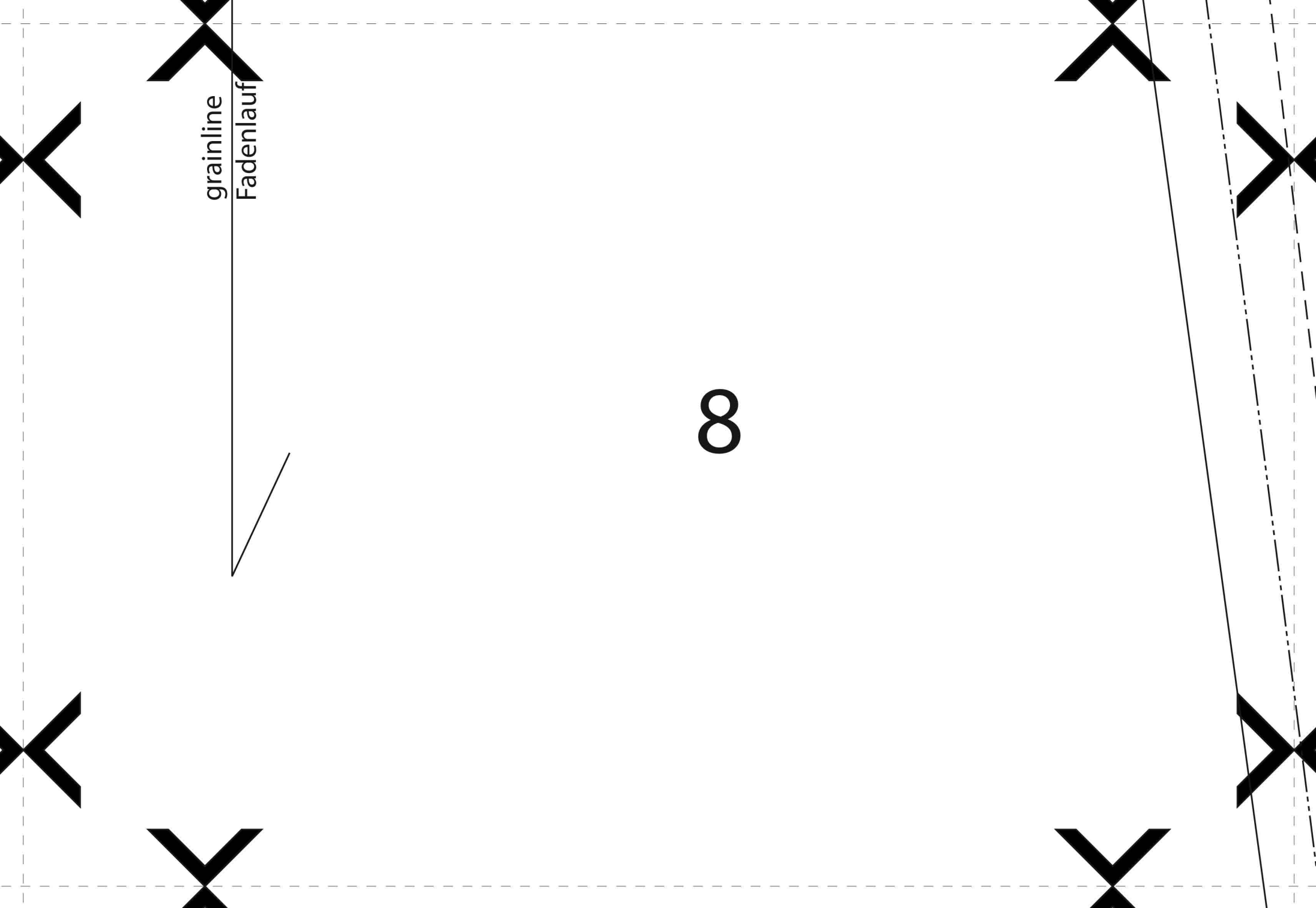
1

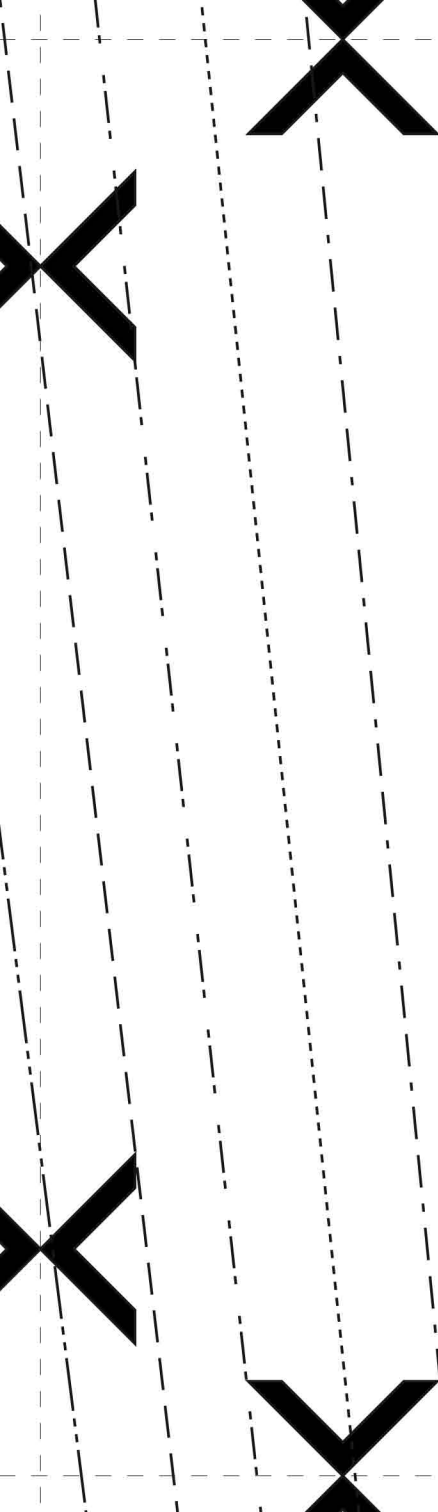
Front / Vorderteil

cut 2 / 2x

© by Black Snail Patterns

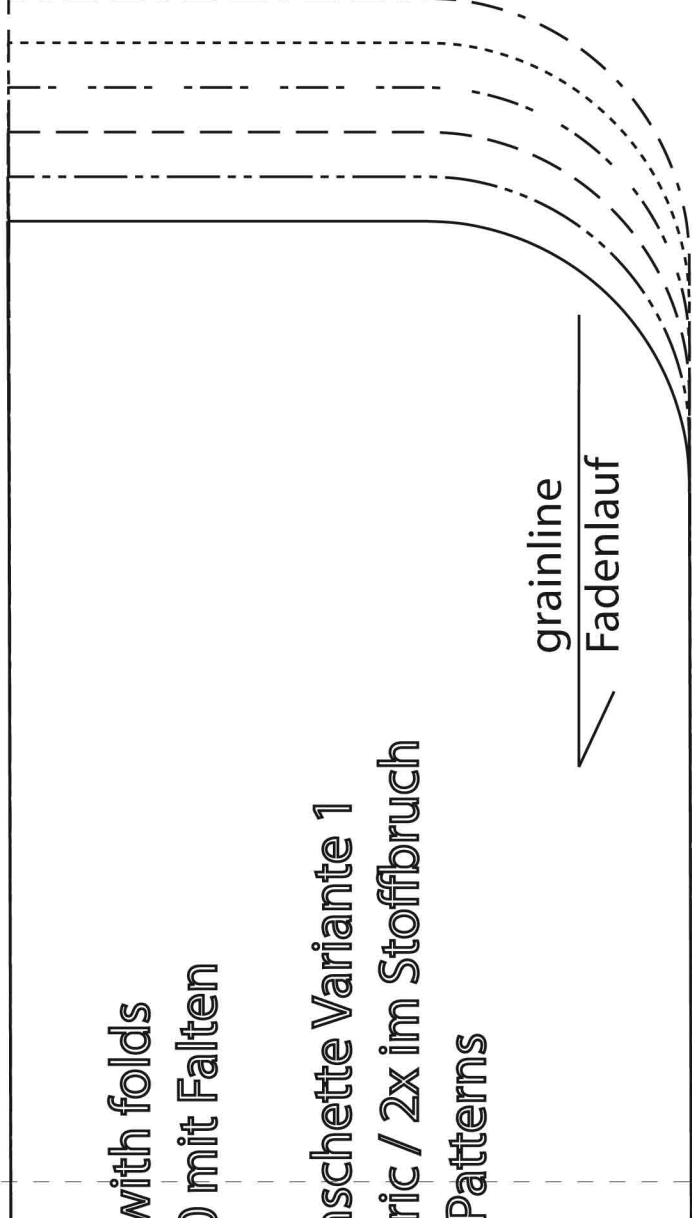
7





with folds
mit Falten

taschette Variante 1
Tasche / 2x im Stoffbruch
Patterns

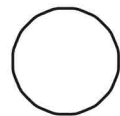
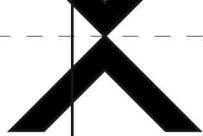


grainline

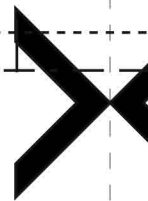
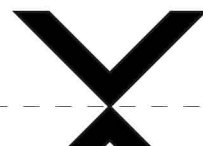
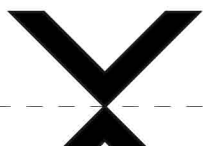
Fadenlauf

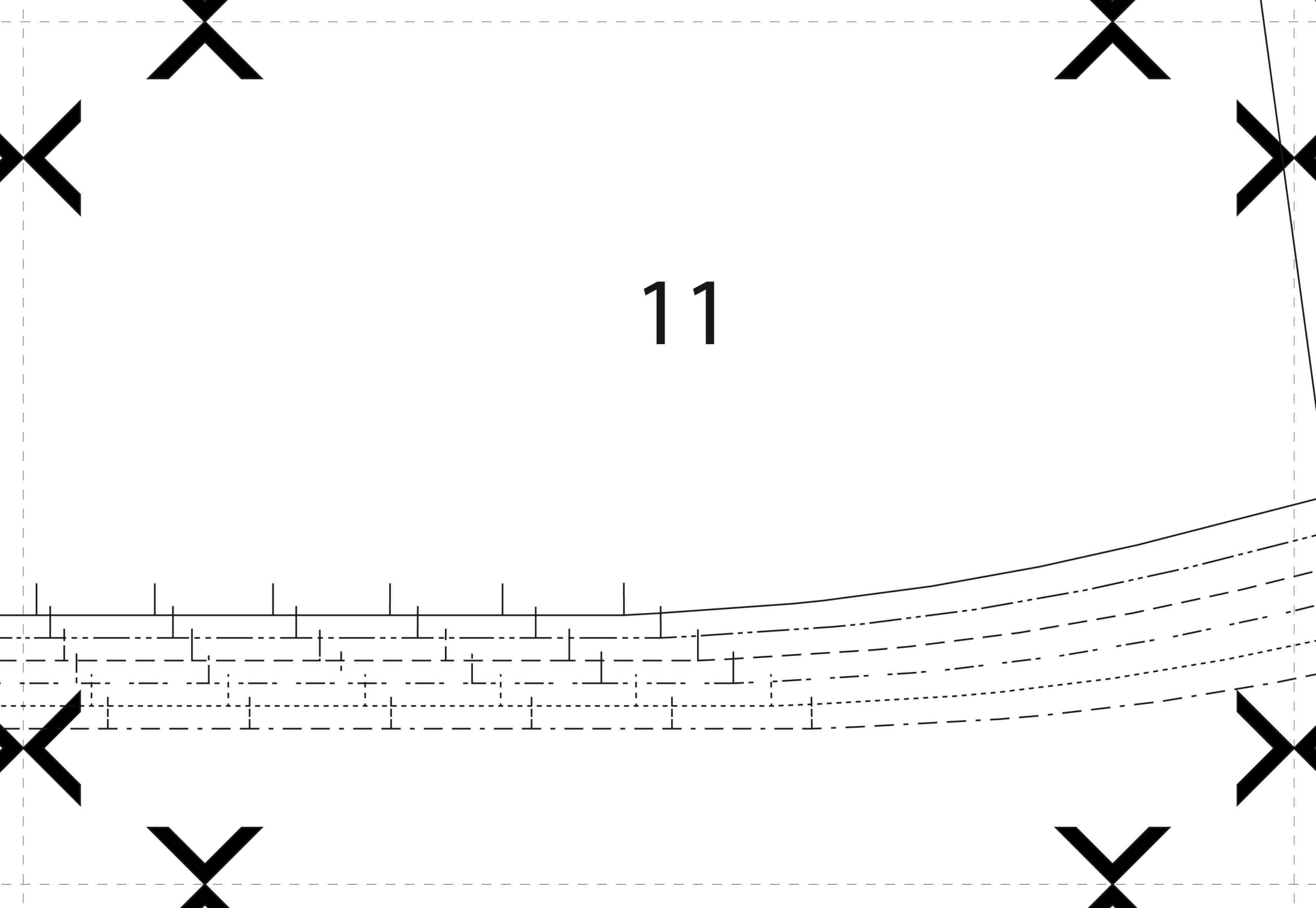
9

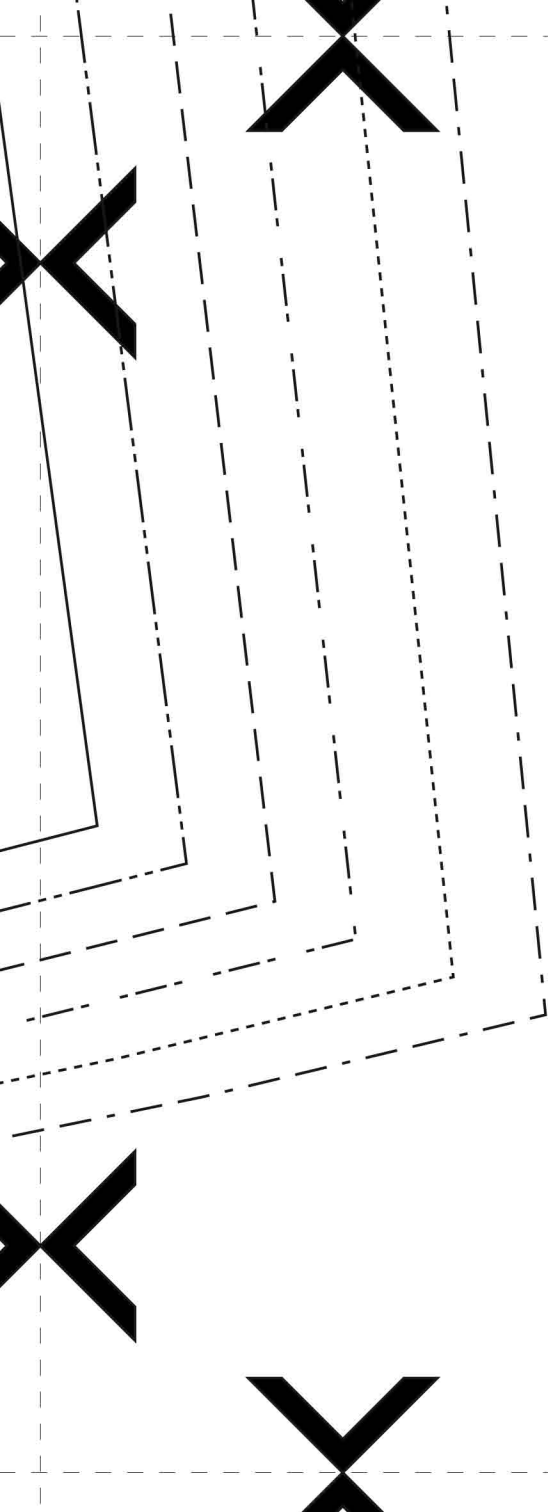




10





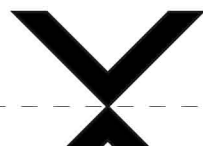
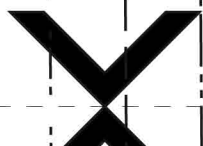
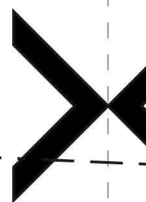
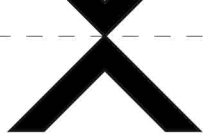


Shirtwaist 1890 with
Blusentaille 1890 m
8
cuff type 1 / Mansch
cut 2 on fold fabric /
© by Black Snail Pat

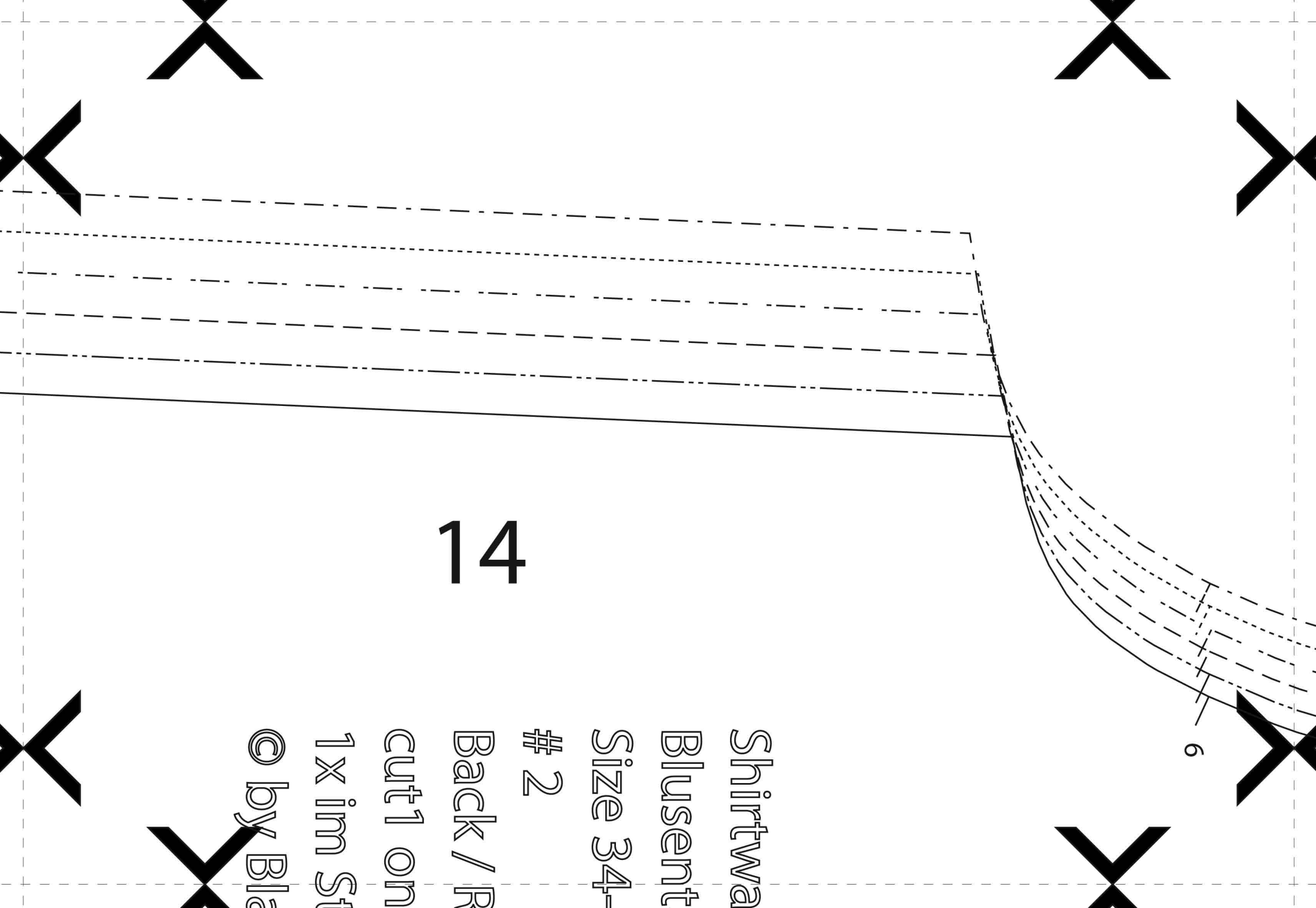


12





13



14

Shirtwa
Blusent
Size 34-
2
Back / R
cut1 on
1x in St
© by Bla

10cm x10cm

3" x 3"

34 / 8

36 / 10

38 / 12

40 / 14

42 / 16

44 / 18

15

grainline
Fadenlauf

16

grainline
Fadenlauf

buttonhole
Knopfloch

Tunnel for Drawstring
Tunnelzug

17

waist 1890 with folds
entaille 1890 mit Falten
4-44 / Grösse 34-44

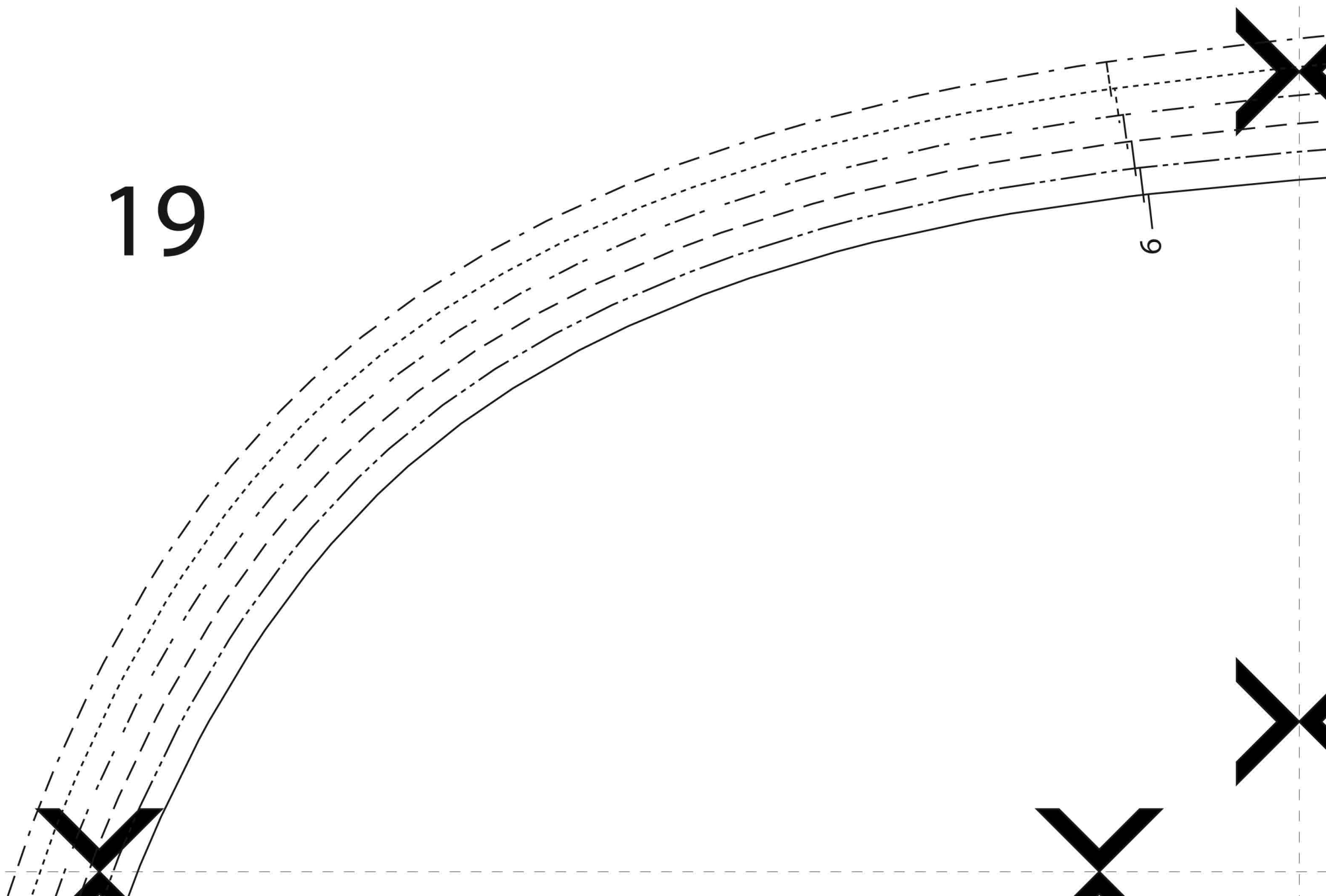
/ Rückenteil
on fold of fabric /
Stoffbruch
Black Snail Patterns

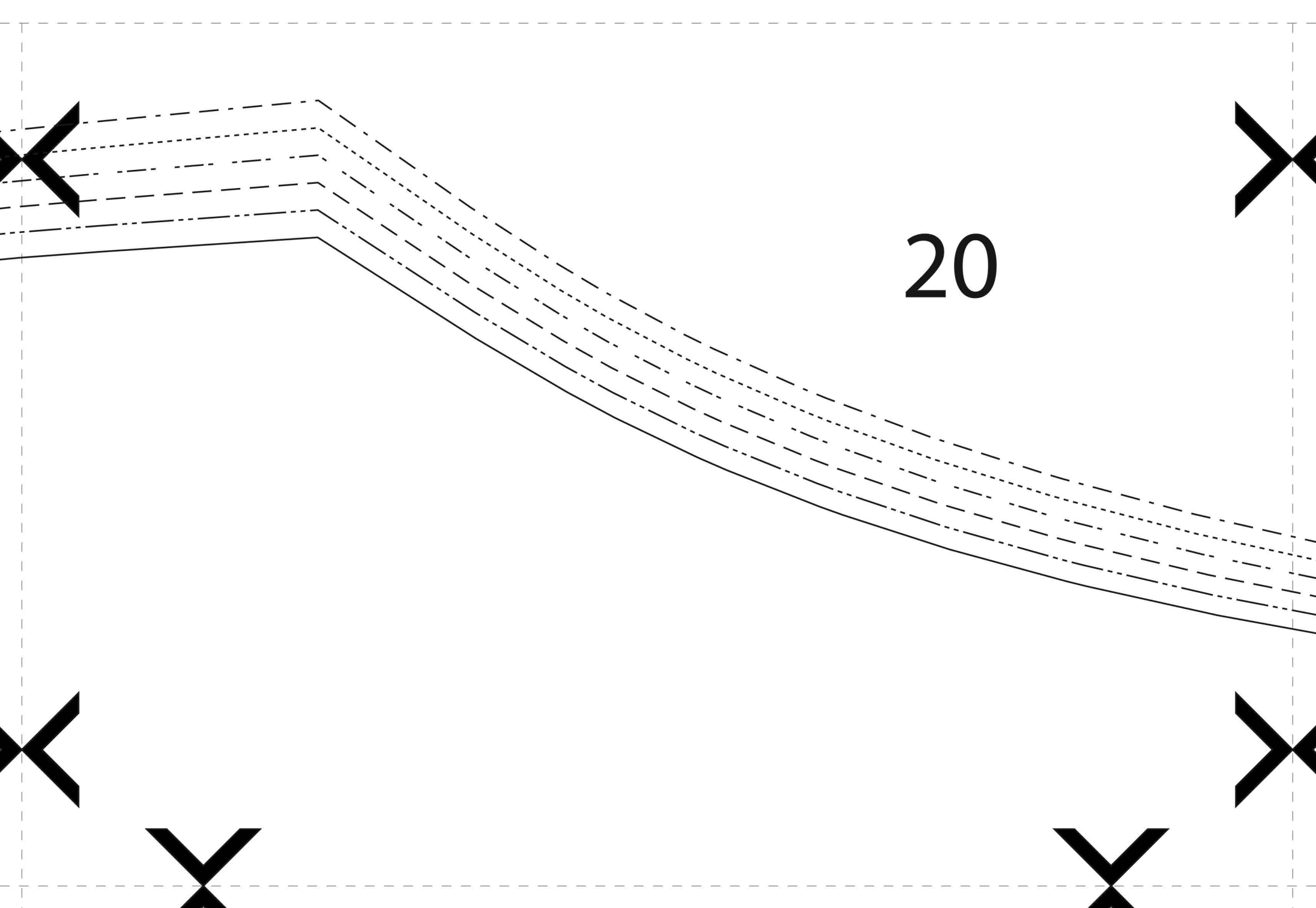
cut on fold of fabric / Stoffbruch

Shirtwaist 1890 with folds
Blusentaille 1890 mit Falten
9

cuff type 2 / Manschette Variante 2
cut 2 on fold fabric / 2x im Stoffbruch
© by Black Snail Patterns

19





21

2

Shirtwaist 1890 with folds
Blusentaille 1890 mit Falten
Size 34-44 / Grösse 34-44

7

collar / Kragen

cut 2 on fold fabric / 2x im Stoffbruch

© by Black Snail Patterns

cut on fold of fabric /
Stoffbruch

grainline
Fadenlauf



5

44 / 18

22

Shirtwaist 1890 with folds
Blusentaille 1890 mit Falten
Size 34-44 / Grösse 34-44

4

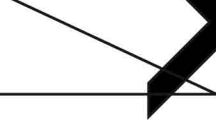
Sleeve / Ärmel

cut 2 / 2x

© by Black Snail Patterns

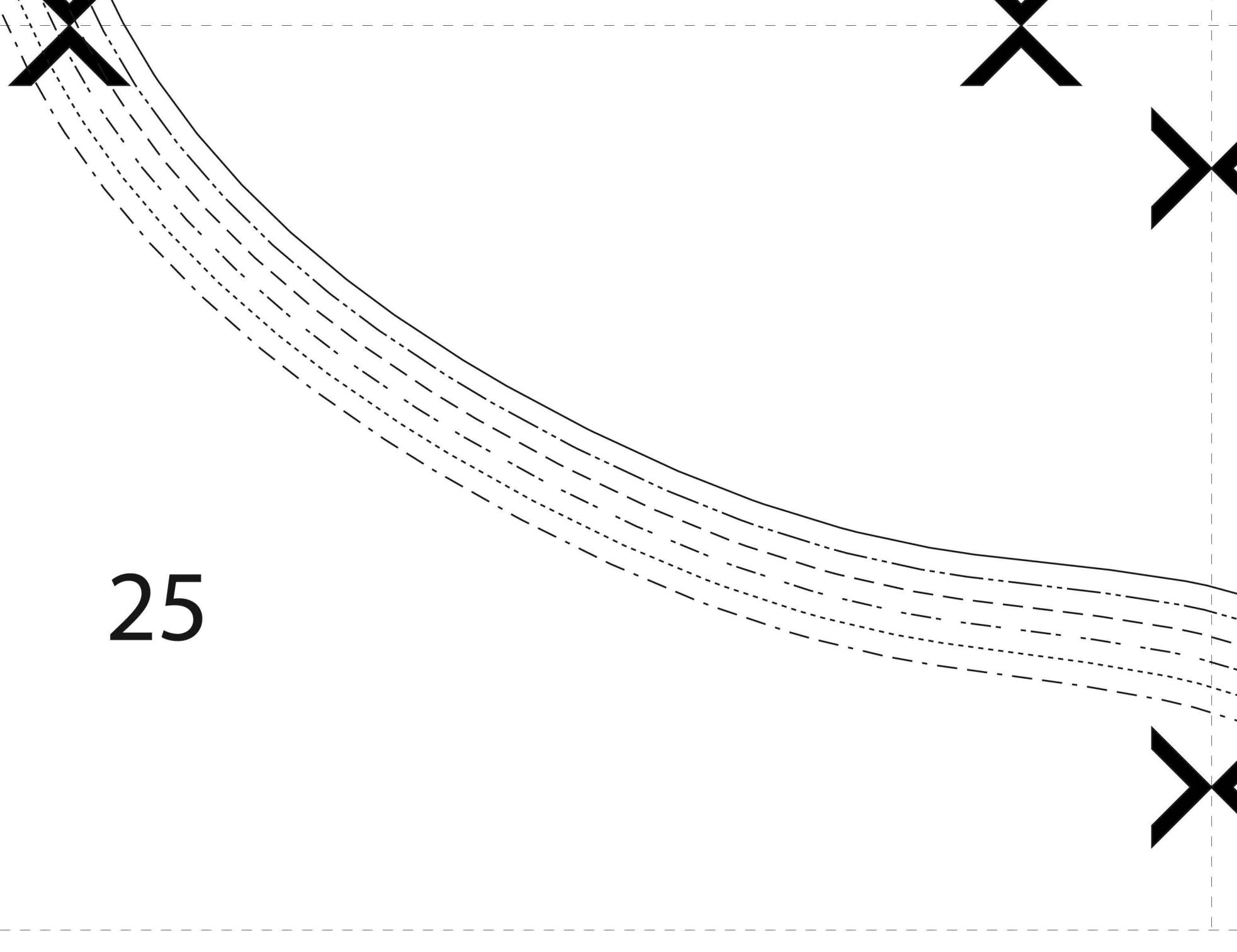
23

grainline
Fadenlauf

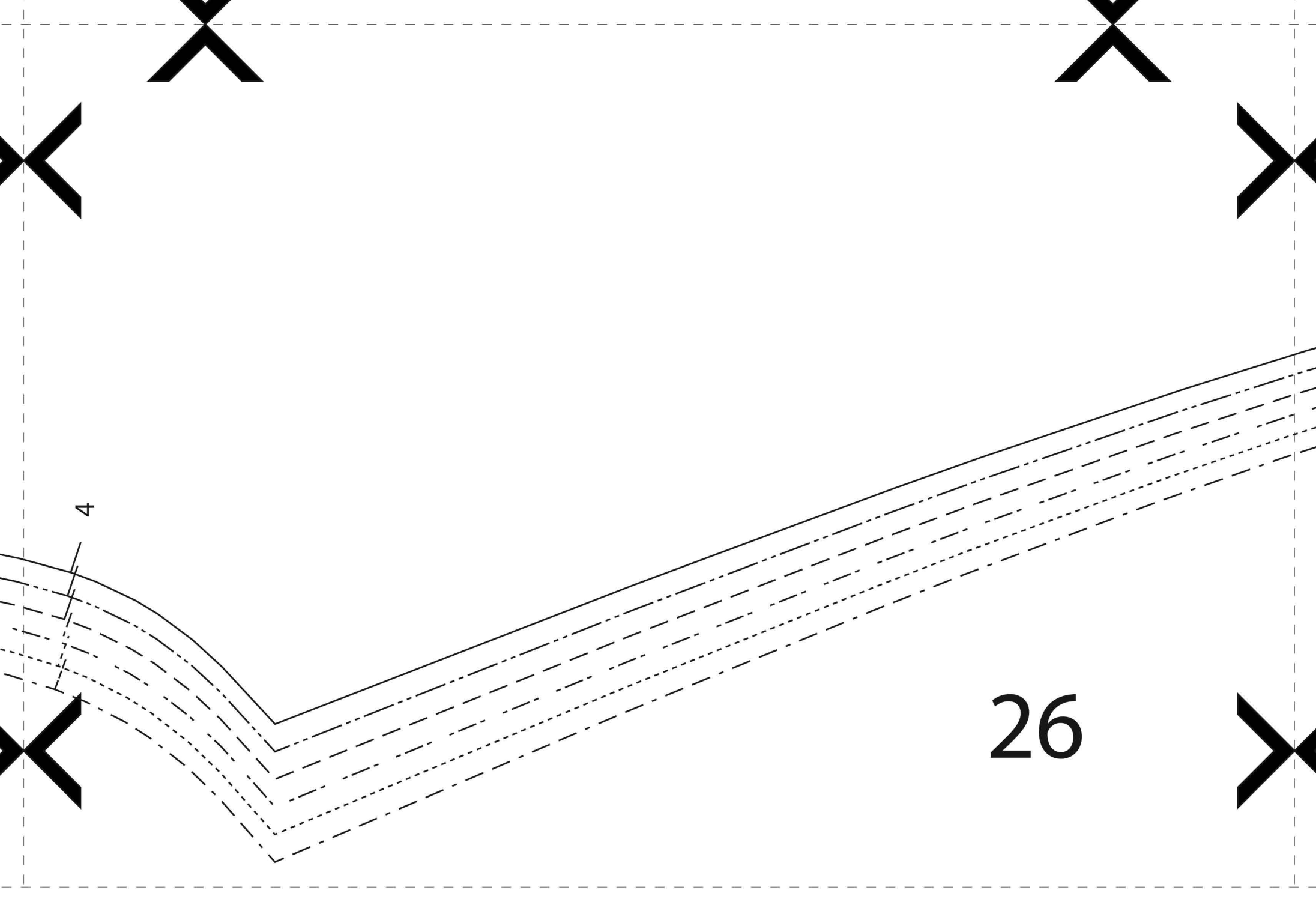


slit
Schlitz

24



25



27

Shirtwaist 1890 with folds
Blusentaille 1890 mit Falten

6

collar stand / Kragensteg

cut 2 on fold fabric / 2x im Stoffbruch

© by Black Snail Patterns

2

3

center front /
vordere Mitte

1
34
44

grainline
Fadenlauf

cut on fold of fabric /
Stoffbruch