

Fleece Jacket

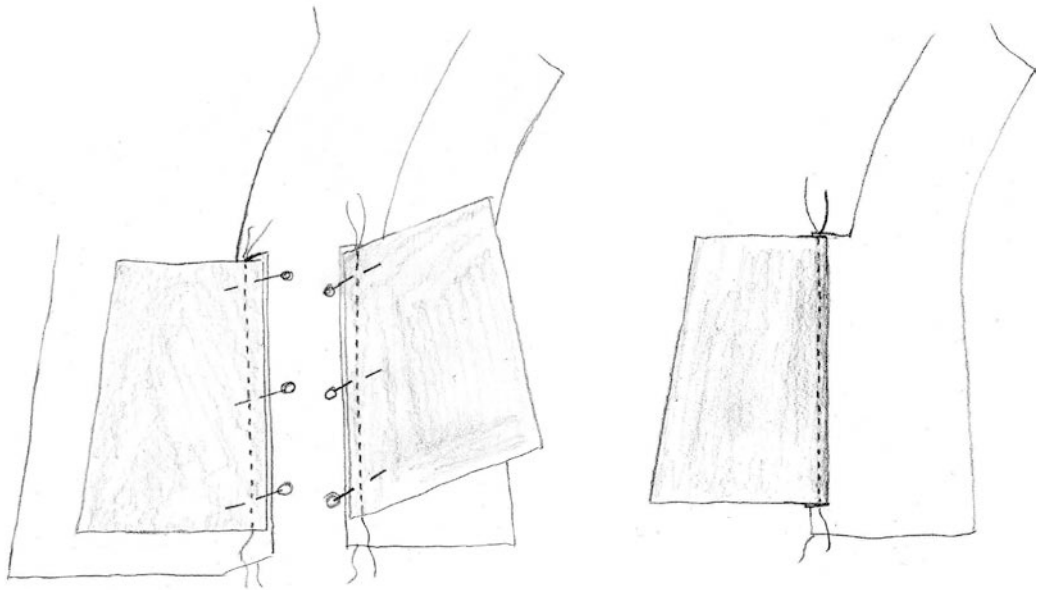


Sewing instruction

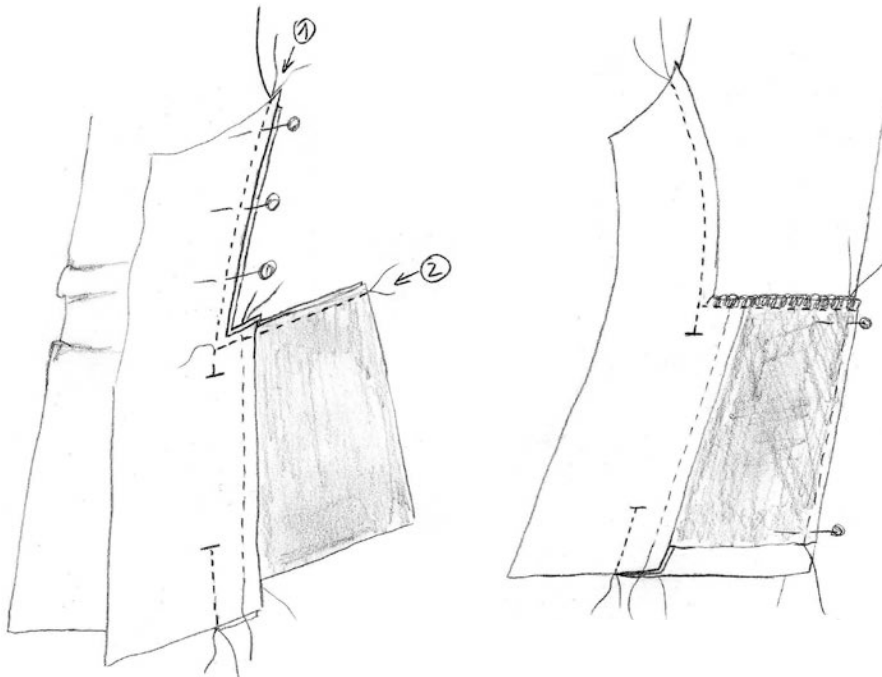
1. Cut out all pieces, pocket from Nylon tricot

Note, iron polyester fabrics with care at low temperatures.

2. Sew pocket pouch to front and side front, right sides together. Lay pocket pouch to the side and topstitch.

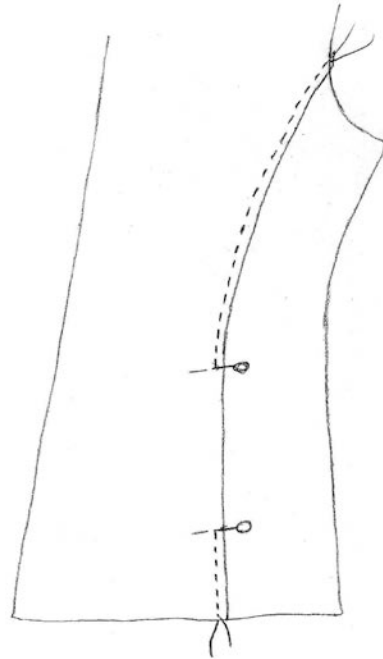


3. Pin front and side front, right sides together, pocket pouches should match exactly. Sew front and side front together, leave opening for pocket (1). Sew pocket pouches at top edge (2). Serge with an overlock stitch.



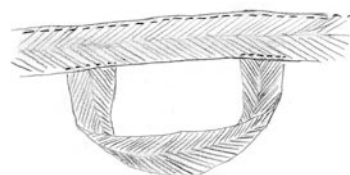
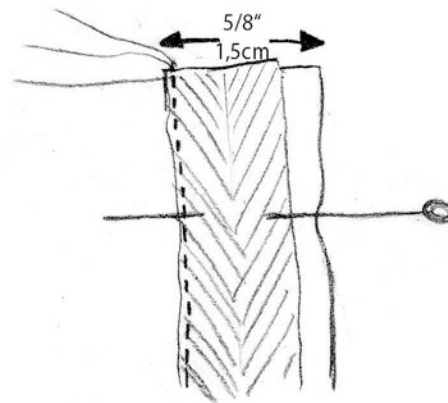
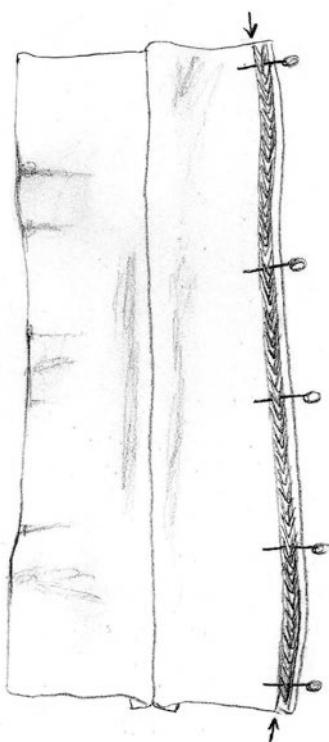
Fold seam allowance toward front part, pocket pouches should match centre front, baste.

Turn to right side, and topstitch with the width of your presser foot. Leave pocket open. Open pocket and pull it over the arm bed of your sewing machine and topstitch pocket opening.



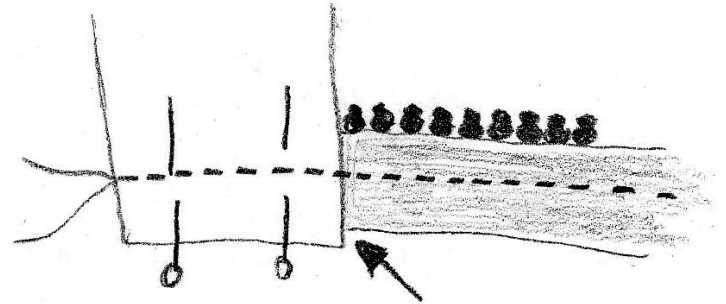
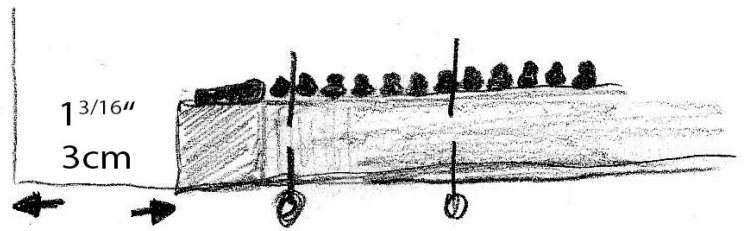
4. Sew upper and lower back, right sides together, fold seam allowance to upper part and topstitch from the right side with width of presser foot. Sew back sides to back part, fold seam allowance to back part, topstitch from right side. Close shoulder seams, fold seam allowance to back part and topstitch from right side.

5. Pin collar pieces right sides together and sew top edge, iron carefully and cut back seam allowance slightly. Sew stay tape to right side of inner collar exactly with the width of seam allowance. Sew a hanger loop to centre of stay tape. Sew outer collar to neckline.

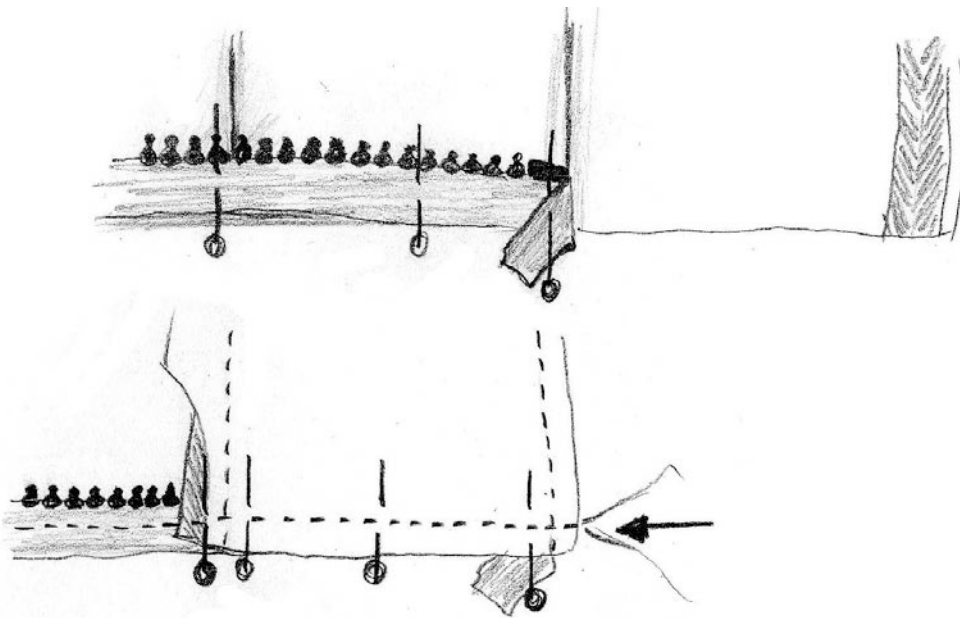


6. Zipper

Pin zipper 3cm (1 3/16") above hem to centre front, turn up hem, pull edge a little bit to centre front (arrow).

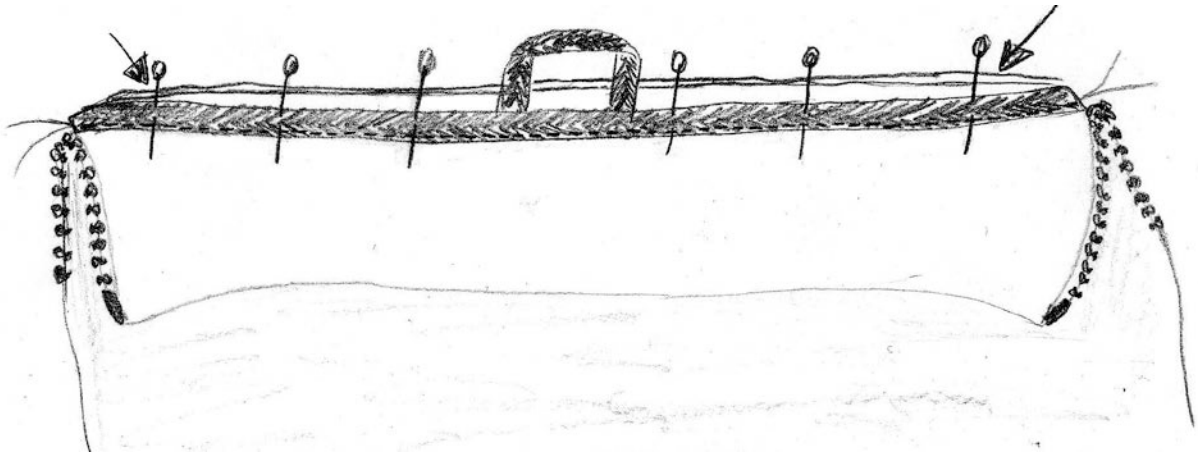


At collar the zipper ends exactly at upper edge of collar. Turn down upper collar, cut back seam allowance at the lower edge of inner collar at a length of ca. 3cm (1 1/4"). Sew in zipper with a normal presser foot.

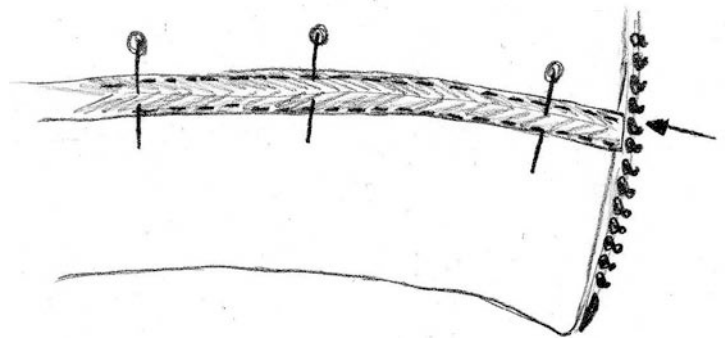


Turn over collar and hem. Stitching should be as far away to open and close zipper without problems.

7. At the collar pin together the seam allowance of neckline, inner and outer collar exactly. Sew along the stitching of the stay tape. Take care to sew within the seam allowance. Start and end about 5cm (2") in front of the zipper (arrows).



Cut back seam allowance, lay stay tape on top and sew stay tape to neckline from the inside of the jacket like shown at the picture below.



8. Sew in sleeves, fold seam allowance to jacket and topstitch from right side with the width of your presser foot.

9. Sew hem facing to back part, iron, close side seams and sleeves, iron carefully.

10. Cuffs: Pin short edges right sides together and sew, open seam allowance and iron. Fold cuff in the middle and pin to sleeve matching seams of sleeve and cuff. Sew, fold seam allowance to sleeves and topstitch from the right side.

11. Turn in hem, topstitch 2cm (3/4") from the edge at hem, topstitch with the width of your presser foot along zipper and collar.

DONE

Size chart

EUR	34	36	38	40	42	44	46	48	50	52
US	8	10	12	14	16	18	20	22	24	26
Body height					168					
Bust	80	84	88	92	96	100	104	110	116	122
Waist	66	70	74	78	82	86	90	96	102	108
Hip	94	97	100	103	106	109	114	119	124	129
Back length	41,4	41,4	41,6	41,8	42	42,2	42,4	42,7	43	43,3
Arm length	59,3	59,6	59,9	60,2	60,5	60,8	61,1	61,4	61,7	62
Upper arm	26	27	28	29	30	31	32	34	36	38
Back width	15,5	16	16,5	17	17,5	18	18,5	19,2	19,9	20,6
Neck circumference	34,6	35,2	35,8	36,4	37	37,6	38,2	39,4	40,6	41,8
Front length	43,6	44,2	44,8	45,4	46	46,6	47,2	48,3	49,4	50,5
all measurements in cm										

EUR	34	36	38	40	42	44	46	48	50	52
US	8	10	12	14	16	18	20	22	24	26
Body height					66					
Bust	31,5	32,5	34	36	38	40	42	44	46	48
Waist	26	27,5	29	31	32	34	35,5	38	40	24,5
Hip	37	38	39	40,5	42	43	45	47	49	51
all measurements in inch										

Fleecejacket „Paula“ Size US 8-18 (EU 34-44)

Recommended fabric: fleece, Nylon tricot fabric for pockets

Fabric required: 1.8 yd. with a width of 55" / 160cm with a width of 140cm

Zipper: 25 1/2" / 65cm

Stay tape: length: 22" / 55cm width: 3/8"-5/8" / 1-1,5cm

Pieces:

#1 front: cut 2

#2 side front: cut 2

#3 side back cut 2

#4 upper back: cut 1 in fold of fabric

#5 lower back: cut 1 in fold of fabric

#6 hem facing: cut 1 in fold of fabric

#7 collar: cut 2

#8 sleeve: cut 2

#9 cuff: cut 2

#10 pocket: cut 4

5/8" seam allowance included, hem 1 3/16" included

1,5 cm seam allowance included, hem 3cm included

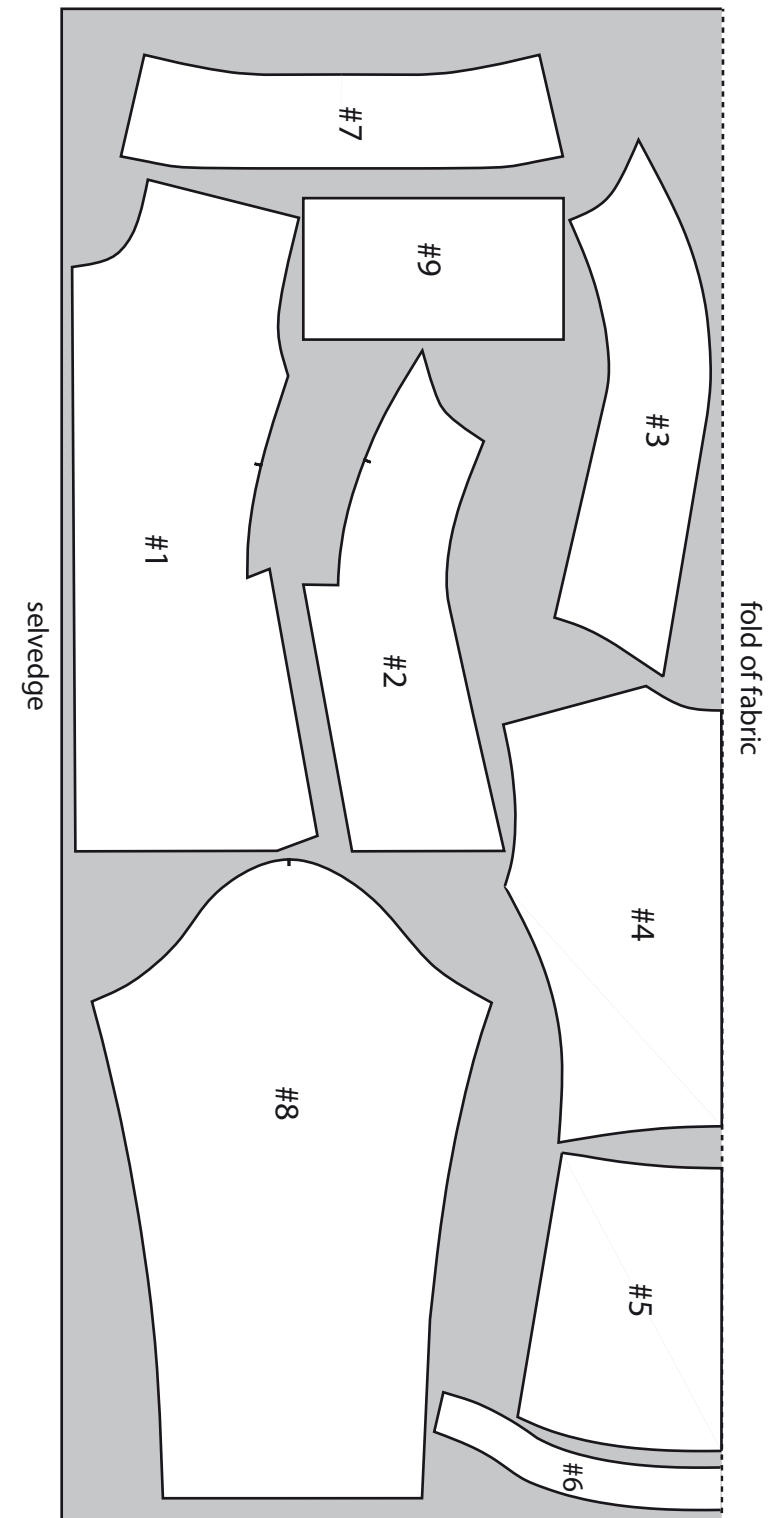


Diagram #1

Bogen #1

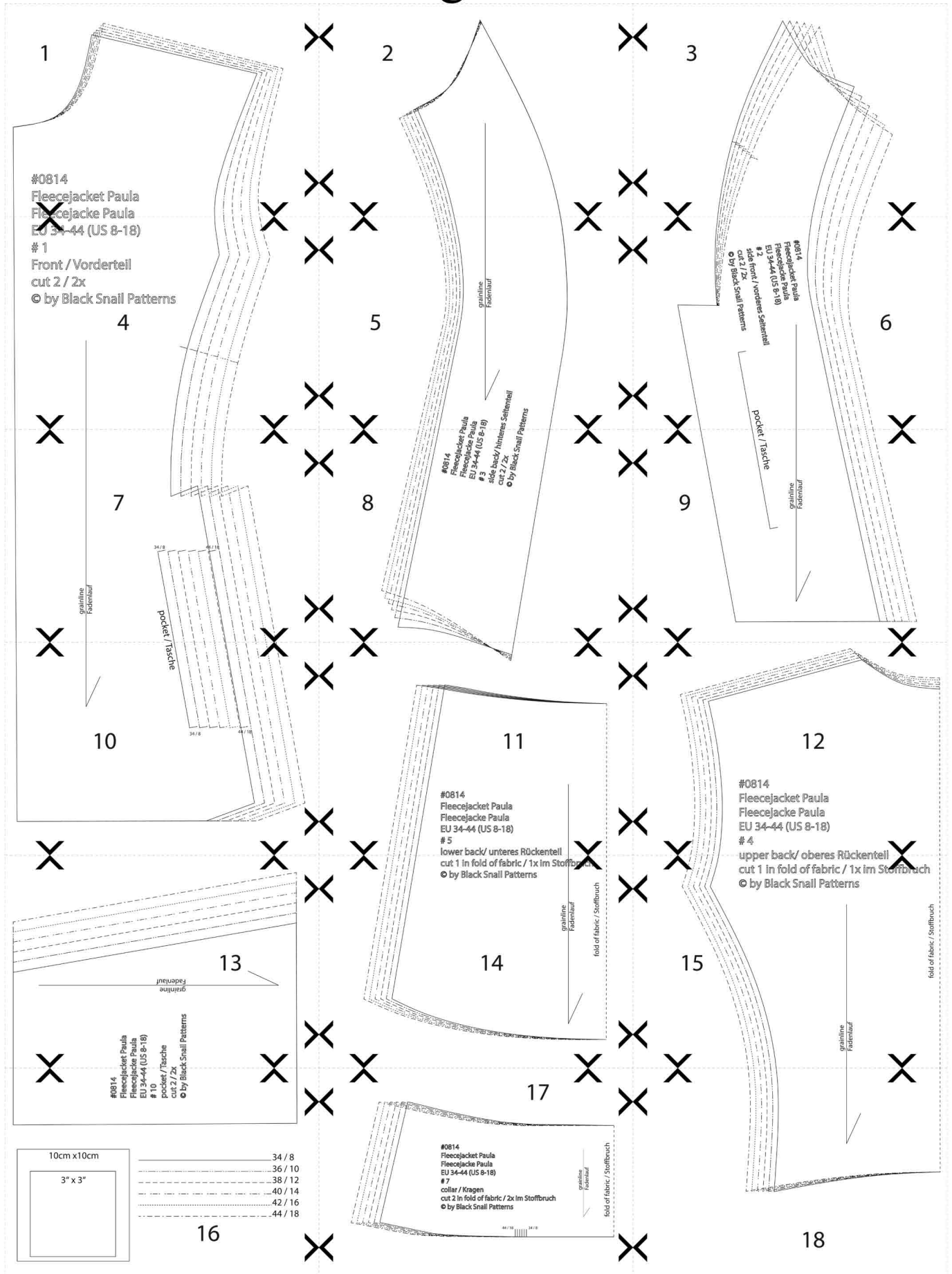
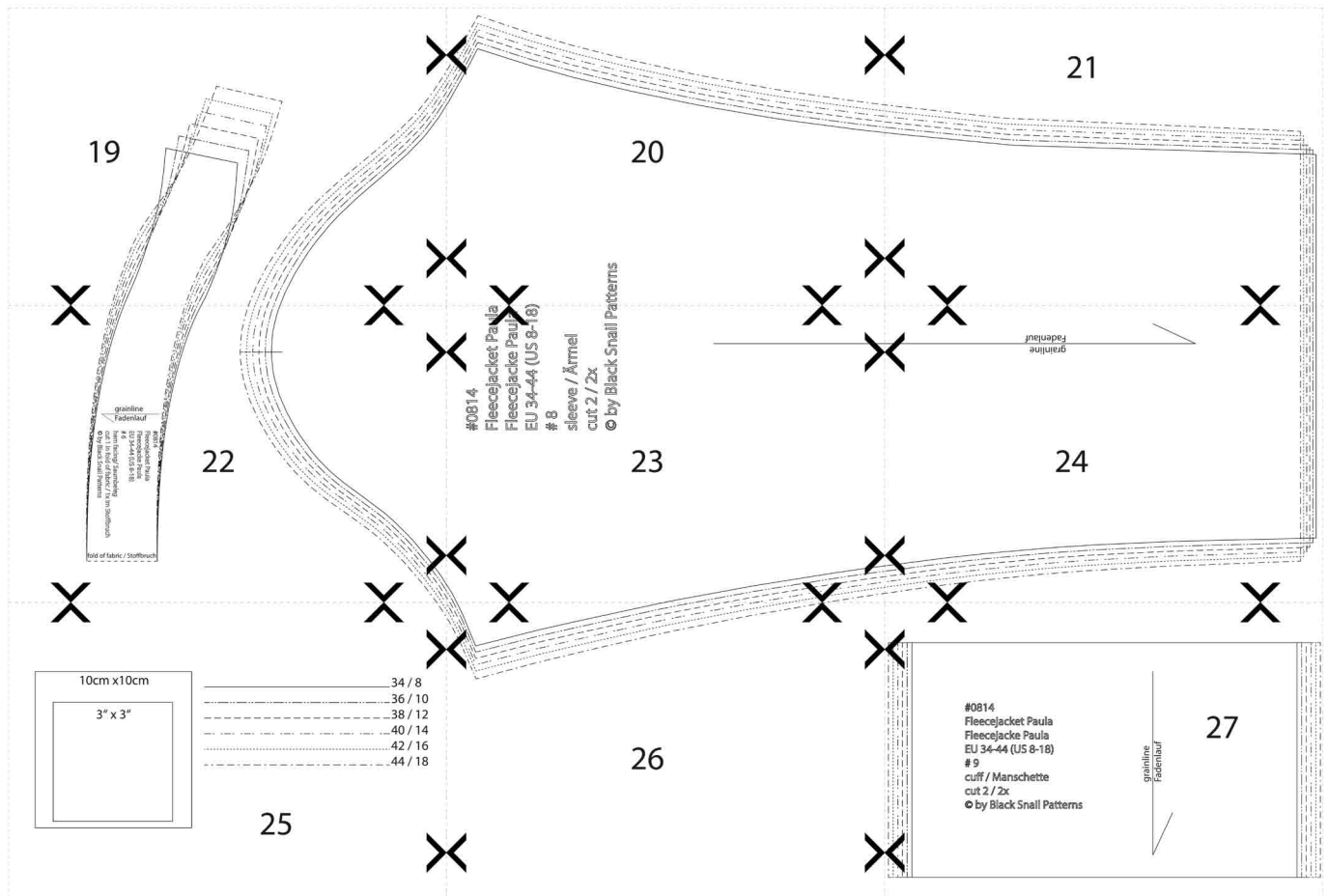


Diagram #2

Bogen #2

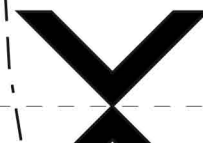


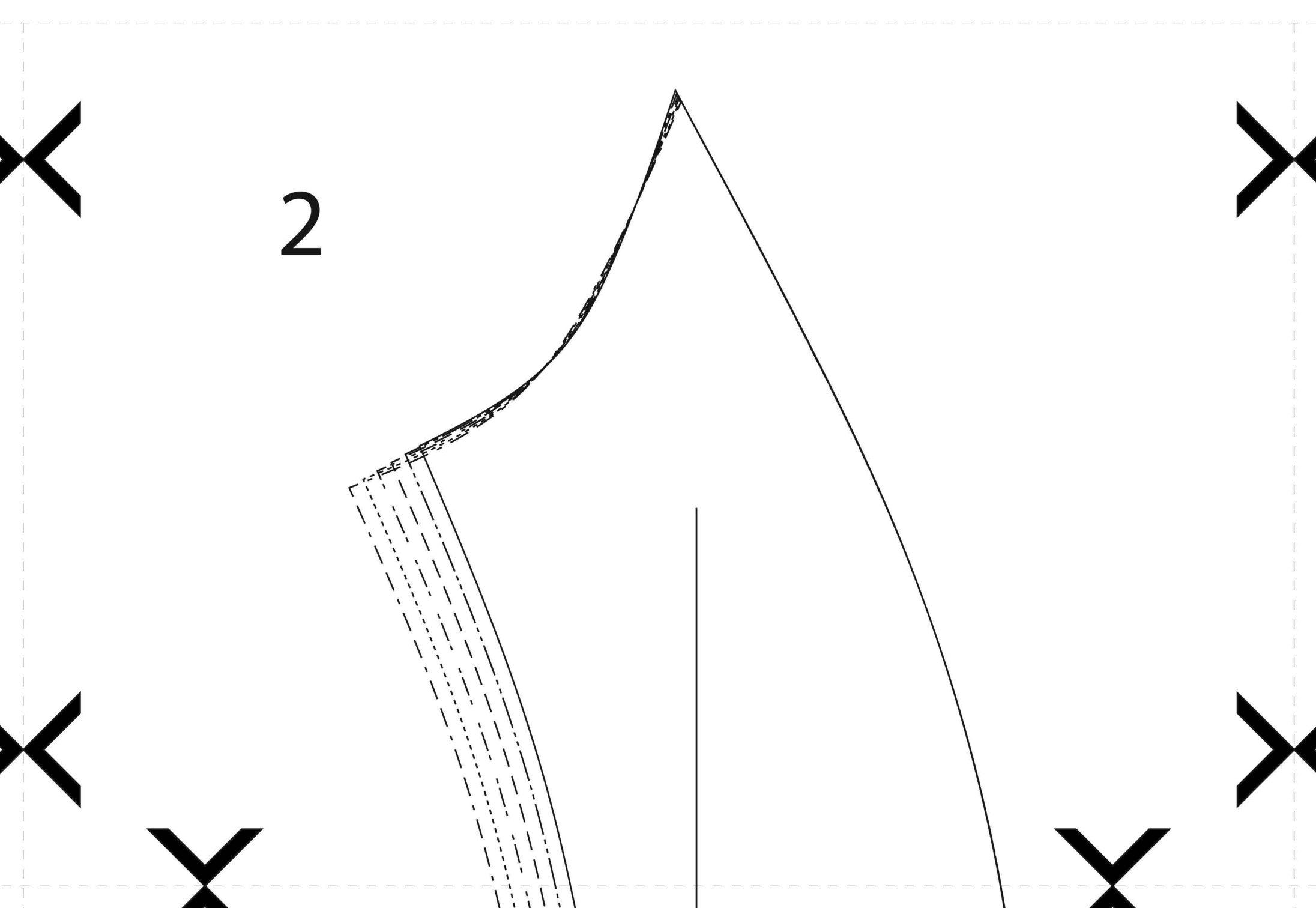
1

#0814

Fleecejacket Paula

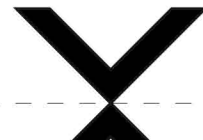
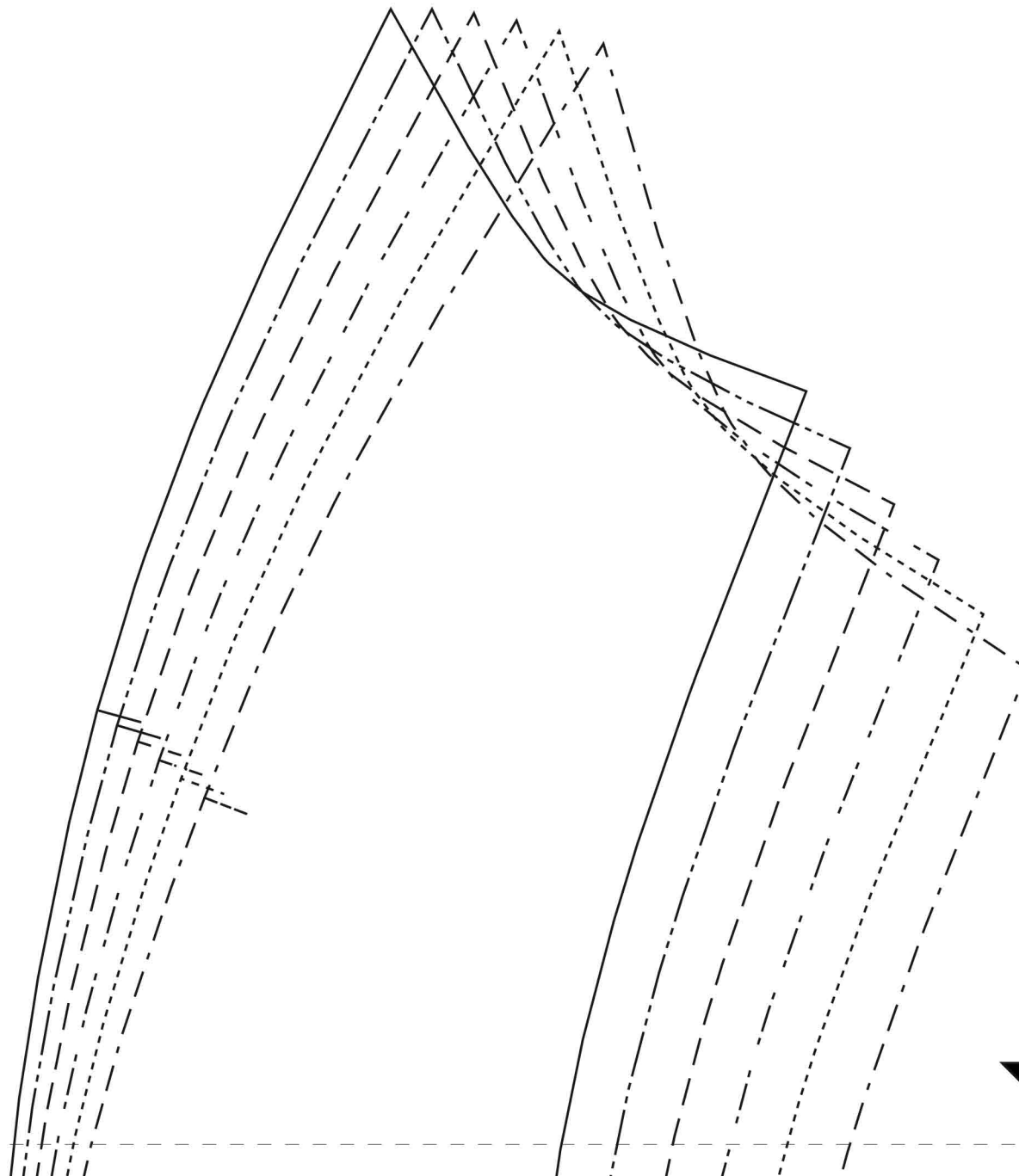
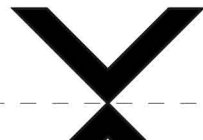
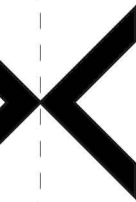
Fleecejacke Paula







3



Fleecejacke Paula
EU 34-44 (US 8-18)

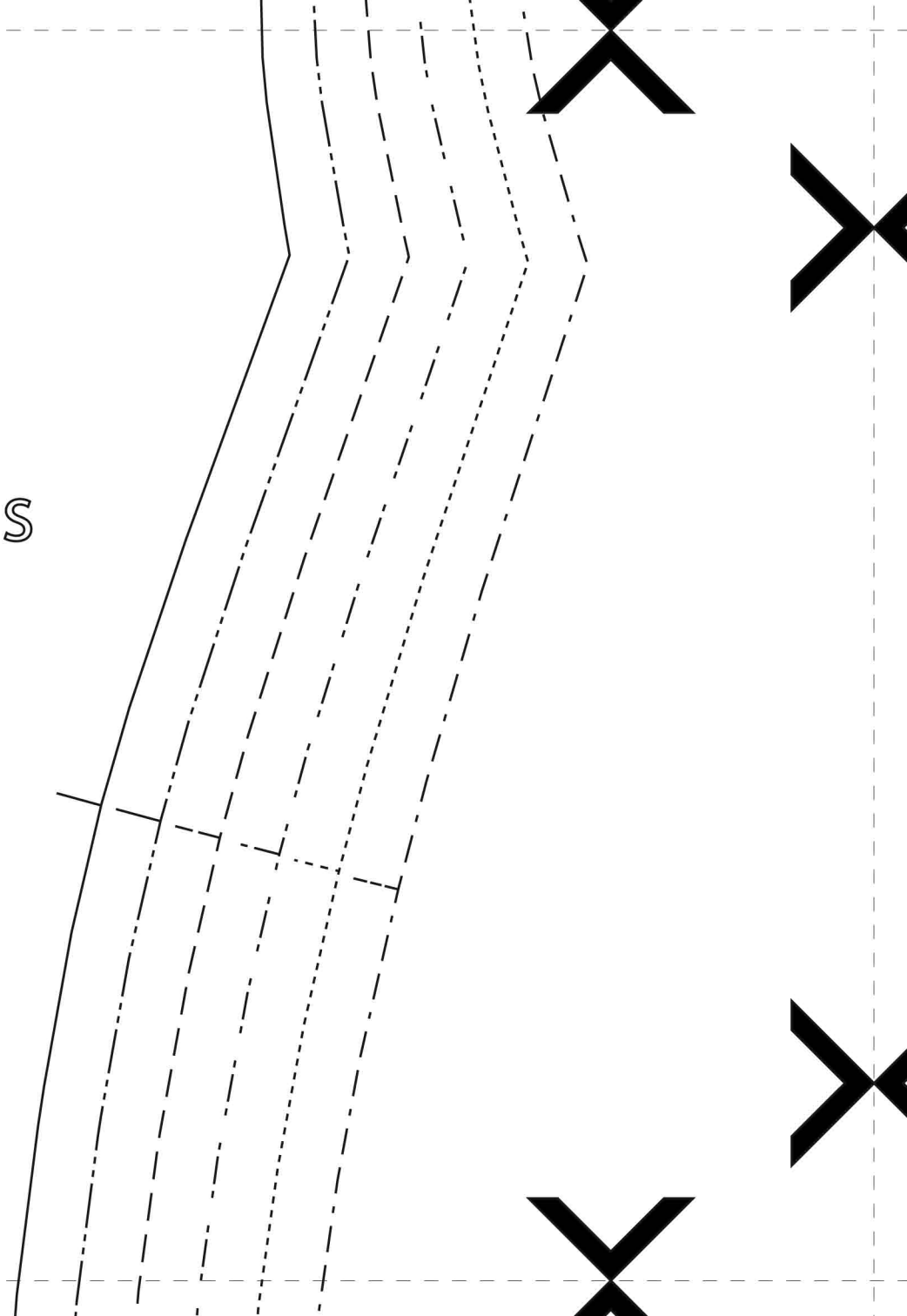
1

Front / Vorderteil

cut 2 / 2x

© by Black Snail Patterns

4



5

Paula
Paula
8-18)

eres Seitenteil

Patterns

grainline
Fadenlauf

9

#0814

Fleecejacket Paula

Fleecejacke Paula

EU 34-44 (US 8-18)

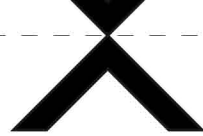
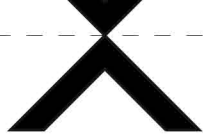
2

side front / vorderes Seitenteil

cut 2 / 2x

© by Black Snail Patterns

pocket



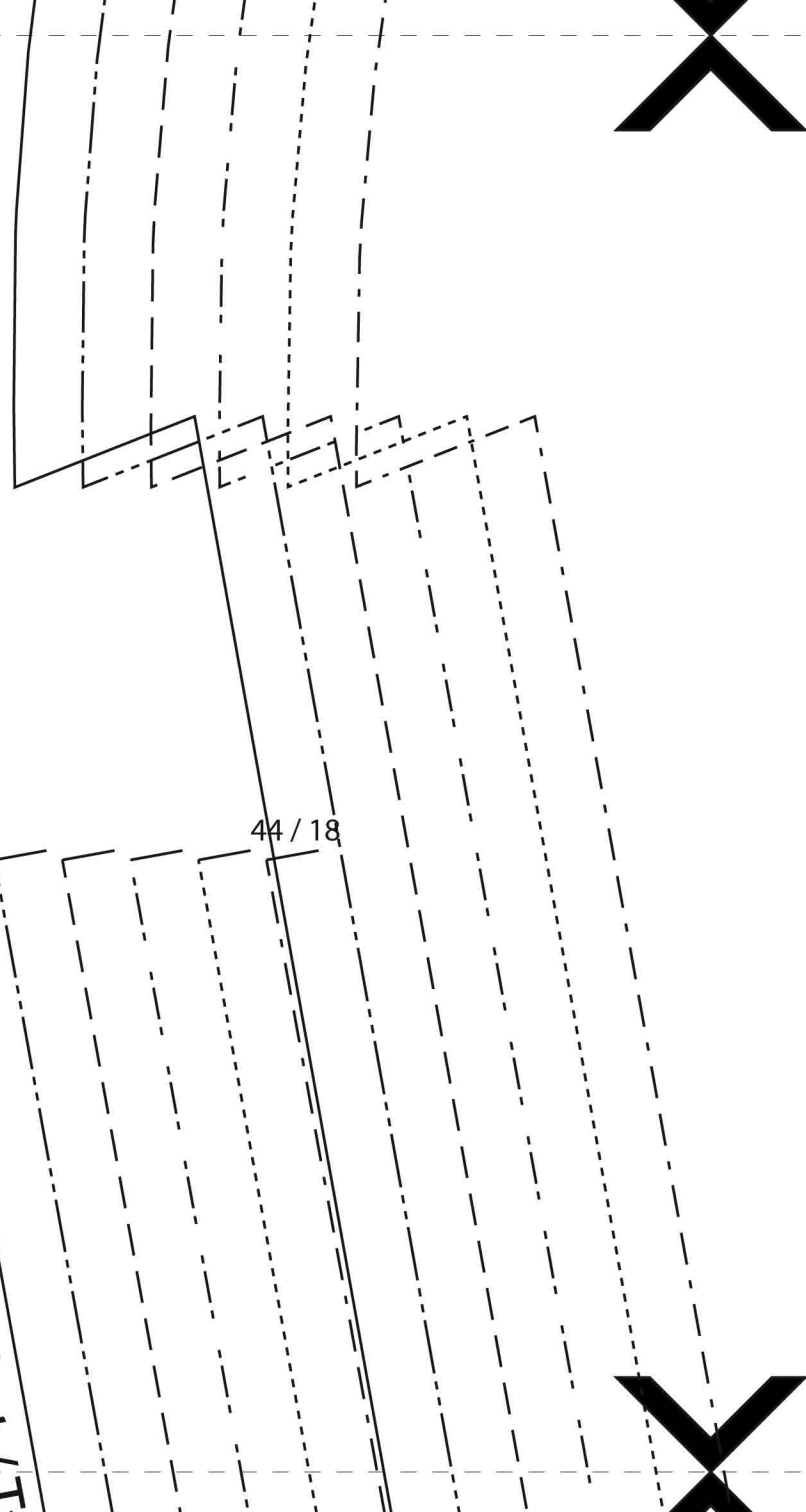
7

grainline
Fadenlauf

34 / 8

44 / 18

pocket / T



∞

#0814

Fleecejacket Pat

Fleecejacket Pat

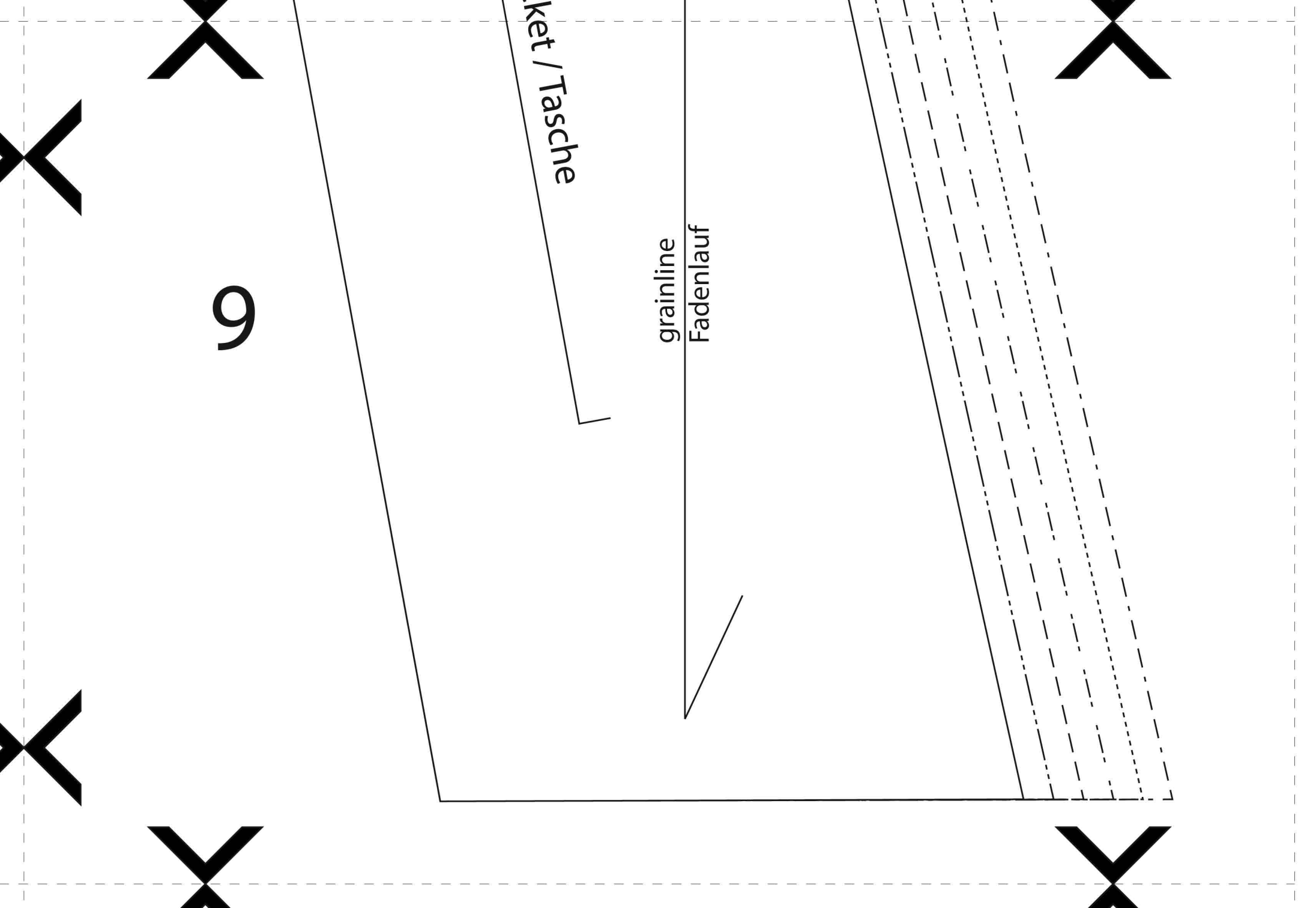
EU 34-44 (US 8-18

3

side back/ hinteres

cut 2 / 2x

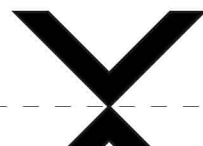
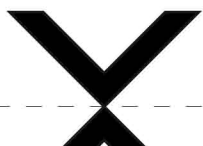
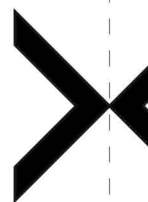
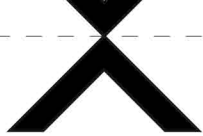
© by Black Snail Pat



grainline
Fadenlauf

Tasche / Tasche

9

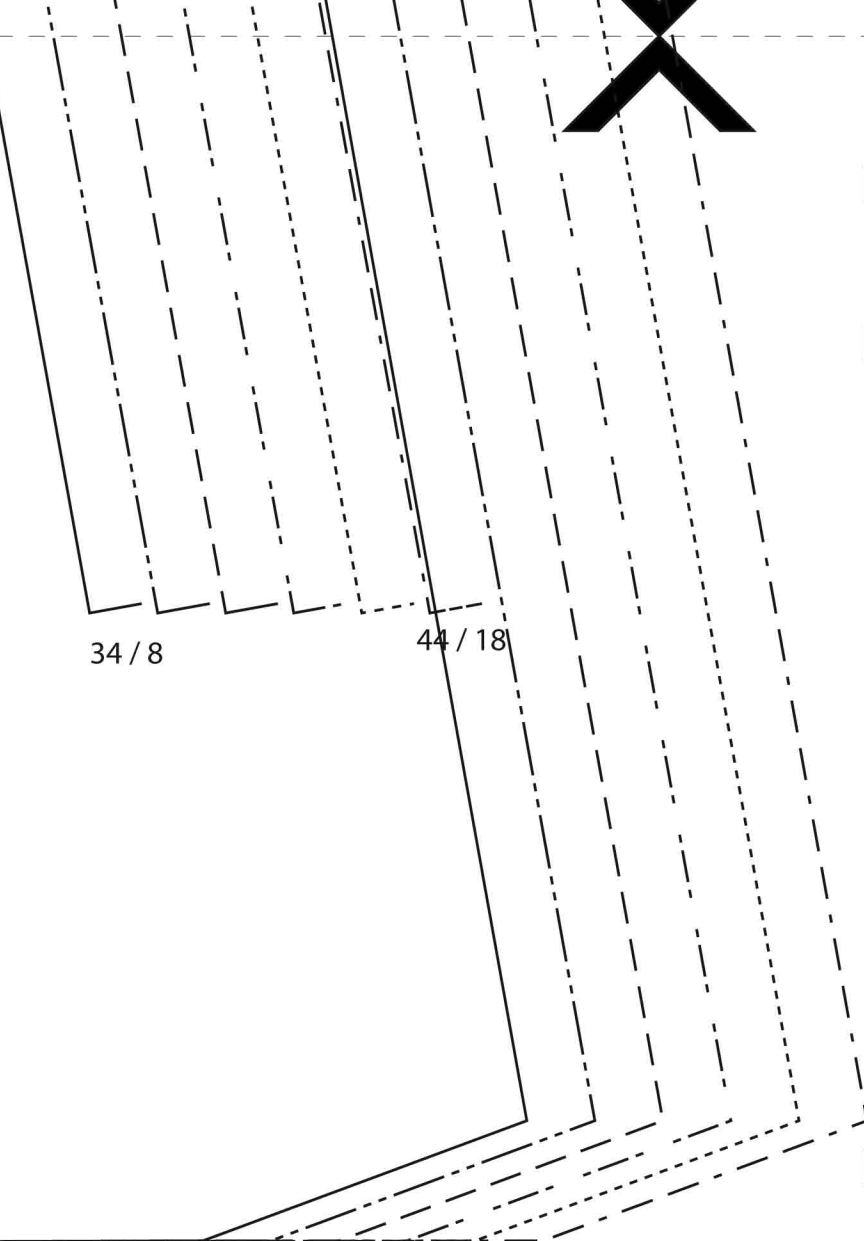


10

/Tasche

34 / 8

44 / 18





11

#0814

Fleecejacket Paula

Fleecejacke Paula

EU 34-44 (US 8-18)

5

lower back/ unteres Rückenteil



12

#0814

Fleecejacket Paula

Fleecejacke Paula

EU 34-44 (US 8-18)

4

upper back/ oberes Rückenteil

acket Paula
acke Paula
14 (US 8-18)

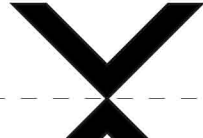
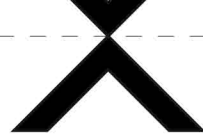
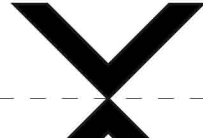
/Tasche

2x

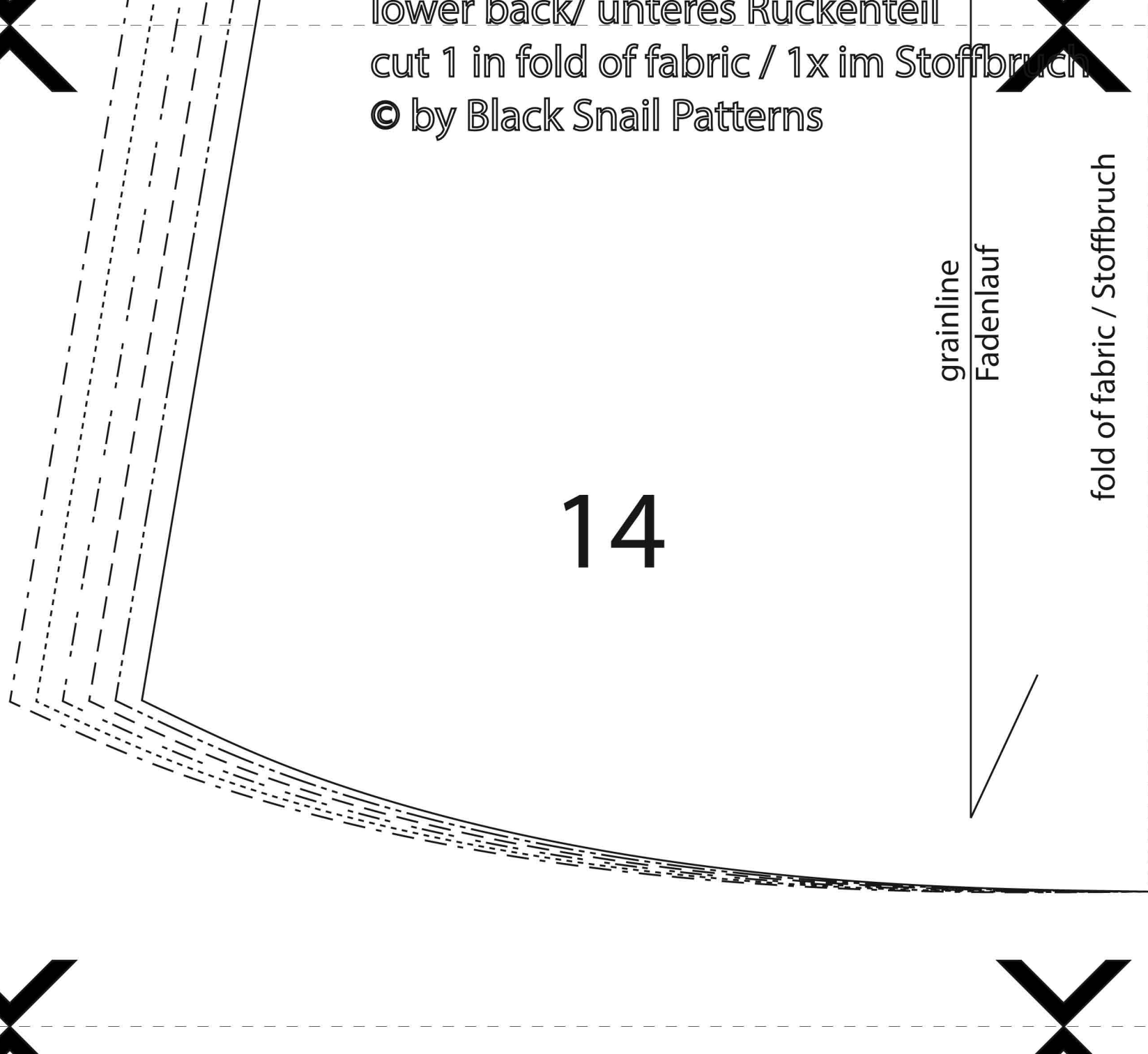
ack Snail Patterns

grainline
Fadenlauf

13



lower back/ unteres Rückenteil
cut 1 in fold of fabric / 1x im Stoffbruch
© by Black Snail Patterns

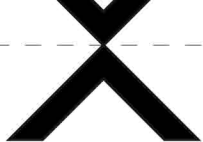


upper back/ oberes Rückenteil
cut 1 in fold of fabric / 1x im Stoffbruch
© by Black Snail Patterns

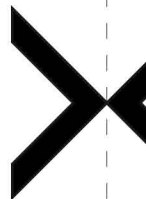
15

grainline
Fadenlauf

fold of fabric / Stoffbruch



#0814
Fleecejack
Fleecejack
EU 34-44 (U
10
pocket / Ta
cut 2 / 2x
© by Black

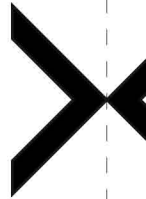


10cm x10cm

3" x 3"

_____ 34 / 8
----- 36 / 10
----- 38 / 12
----- 40 / 14
----- 42 / 16
----- 44 / 18

16



17

#0814

Fleecejacket Paula

Fleecejacke Paula

EU 34-44 (US 8-18)

7

collar / Kragen

cut 2 in fold of fabric / 2x im Stoffbruch

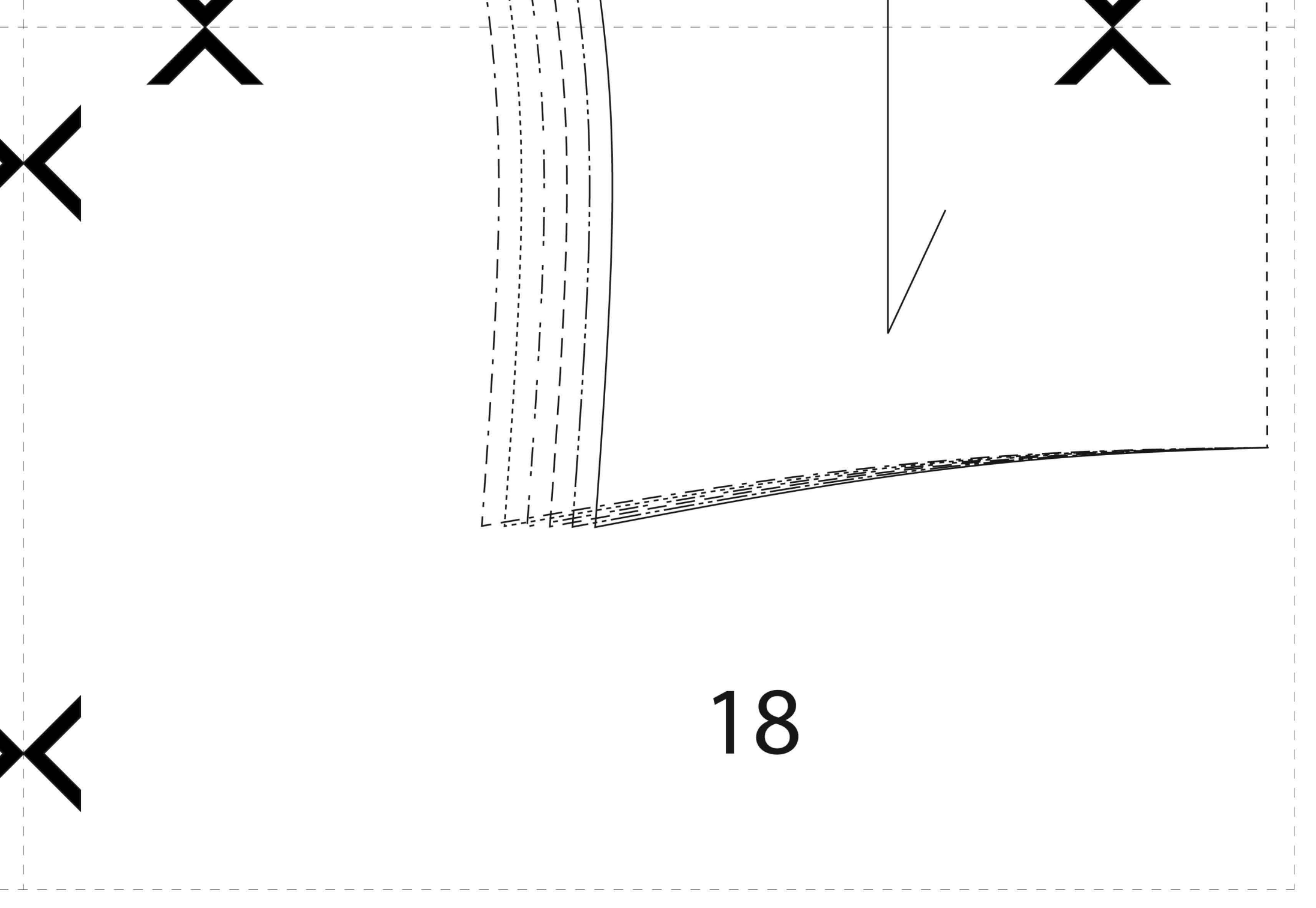
© by Black Snail Patterns

grainline
Fadenlauf

fold of fabric / Stoffbruch

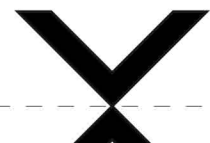
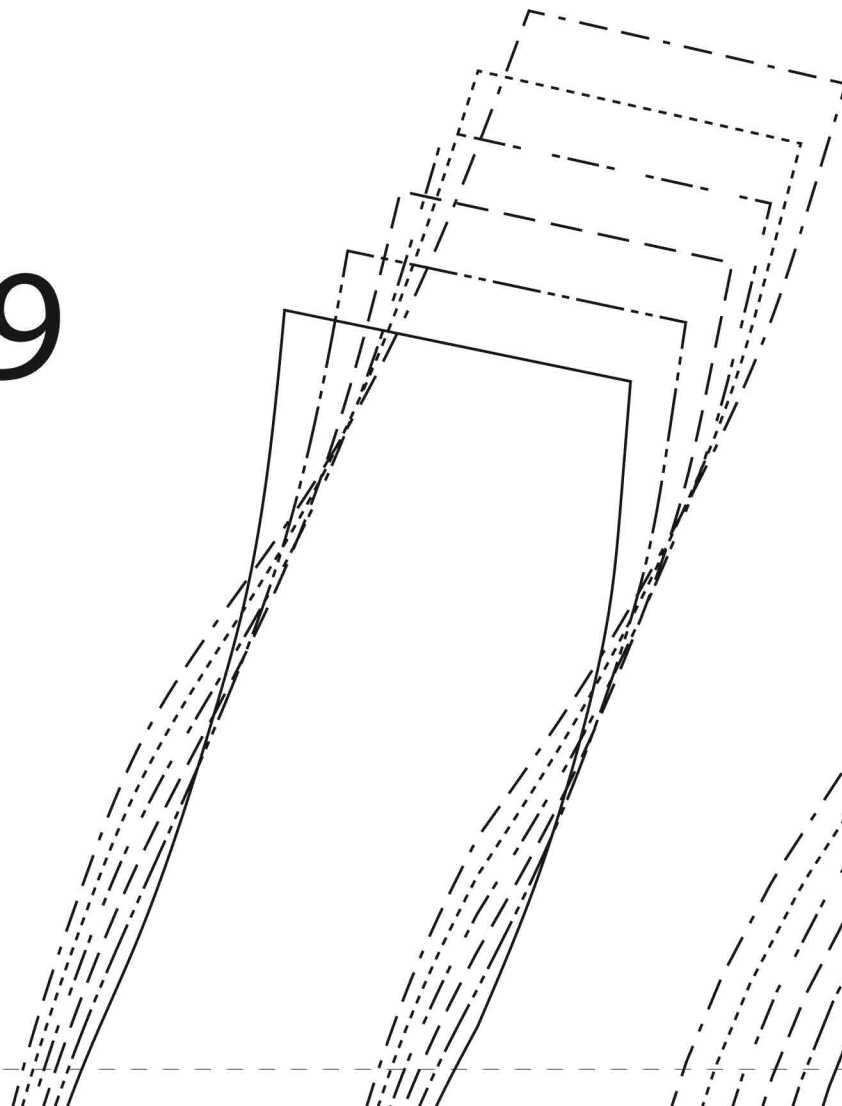
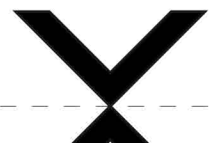
44 / 18

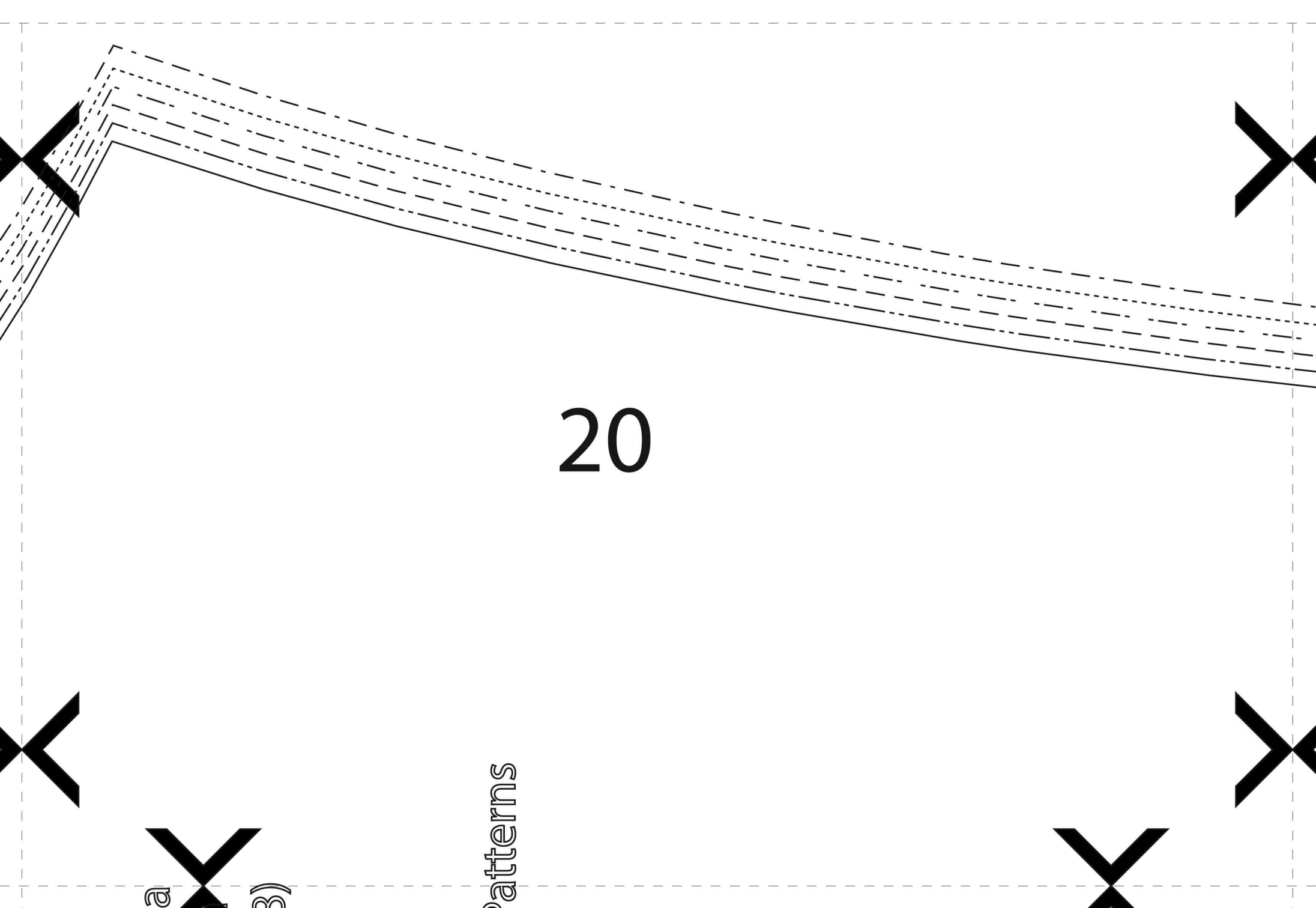
34 / 8



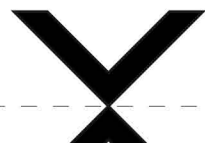
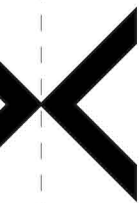
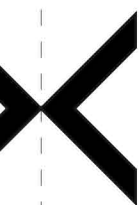
18

19





21



22

grainline
Fadenlauf

#0814

Fleecejacket Paula

Fleecejacket Paula

EU 34-44 (US 8-18)

#6

hem facing/ Saumbeleg

cut 1 in fold of fabric / 1x im Stoffbruch

© by Black Snail Patterns

fold of fabric / Stoffbruch

#0814

Fleecejacket Paula

Fleecejacke Paula

EU 34-44 (US 8-18)

8

sleeve / Ärmel

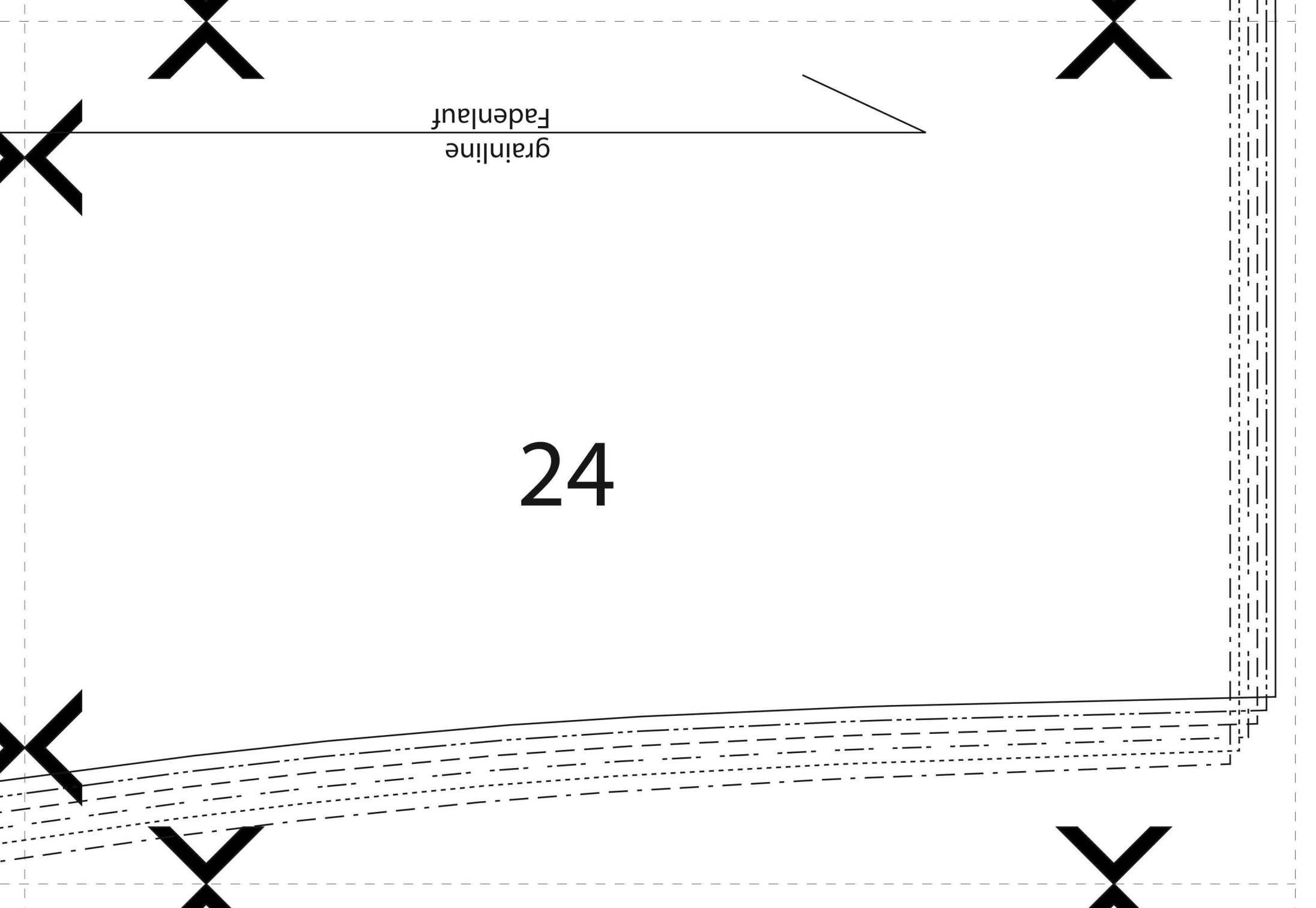
cut 2 / 2x

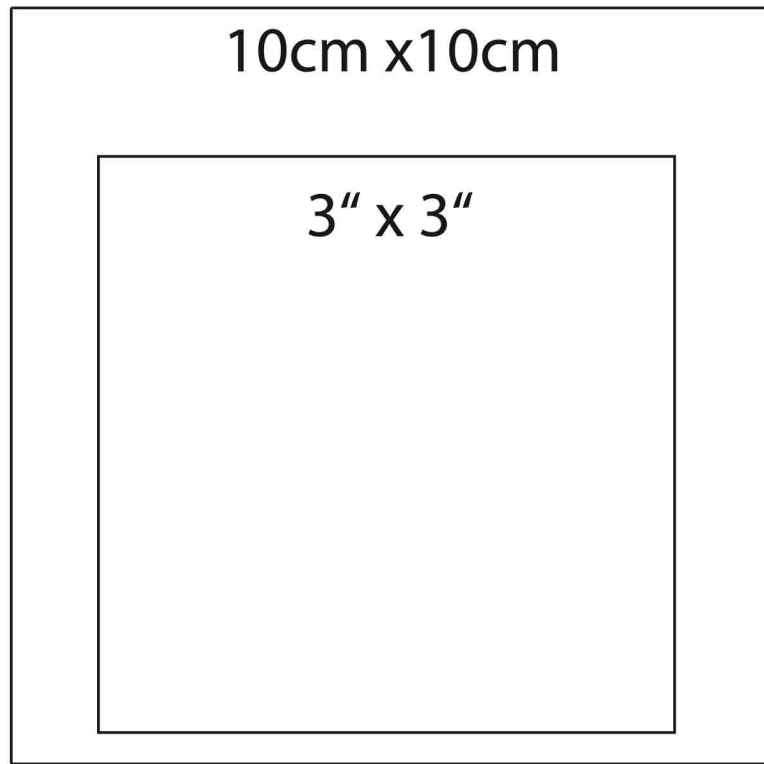
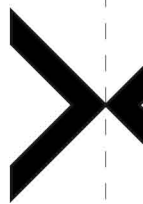
© by Black Snail Pat

23

24

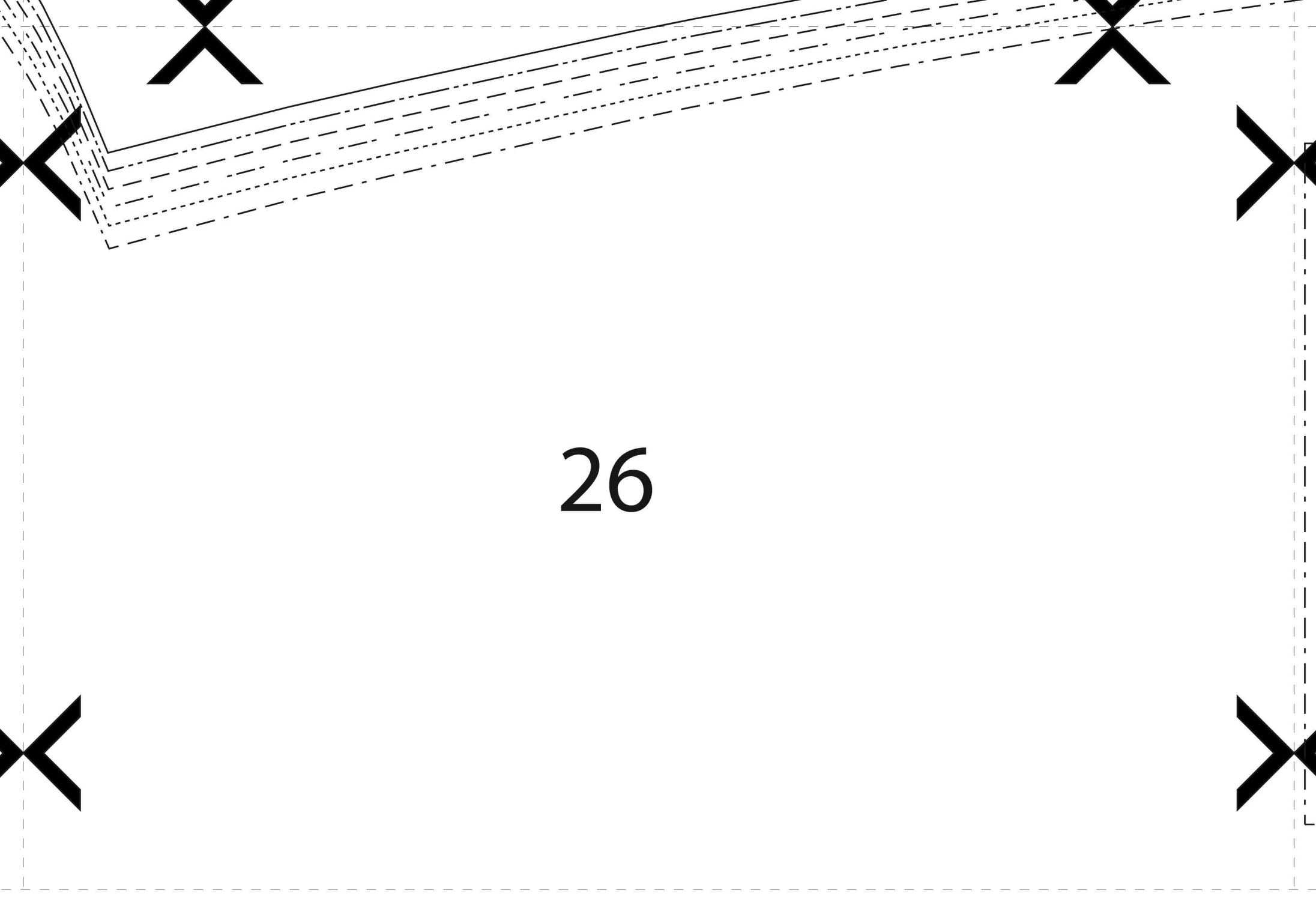
grainline
Fadenlauf





_____	34 / 8
-----	36 / 10
- - - - -	38 / 12
- . - . -	40 / 14
.....	42 / 16
- - - - -	44 / 18

25



26

#0814

Fleecejacket Paula

Fleecejacke Paula

EU 34-44 (US 8-18)

9

cuff / Manschette

cut 2 / 2x

© by Black Snail Patterns

grainline
Fadenlauf

27