

## 1891 Fan-Skirt



## 1891 Fan-Skirt

The Fan-Skirt or Umbrella Skirt became fashionable in 1891. The pattern is suitable as well for day dress as for evening dress with a train.

Around the hips the skirt is fitted with darts, at the back it has deep pleats, below the skirt becomes full to keep the balance with the gigot sleeves.

Apart from the rich decorated waists, the skirts were kept simply.

Fabric required is 4.3 yards (4 meters) with a width of 55" (140cm). A width of 55" is necessary for this pattern.

The skirt is to be worn over a corset, a reduction of the waist about 1 ½" (4cm) is already considered. That means with a natural waist measurement of 31" (78cm), corresponding size US 14, EUR 40, the finished skirt will have a waist measurement of 29" (74cm).

EUR	34	36	38	40	42	44	46	48	50	52
US	8	10	12	14	16	18	20	22	24	26
Body height					66					
Bust	31,5	32,5	34	36	38	40	42	44	46	48
Waist	26	27,5	29	31	32	34	35,5	38	40	24,5
Hip	37	38	39	40,5	42	43	45	47	49	51
all measurements in inch										

EUR	34	36	38	40	42	44	46	48	50	52
US	8	10	12	14	16	18	20	22	24	26
Body height					168					
Bust	80	84	88	92	96	100	104	110	116	122
Waist	66	70	74	78	82	86	90	96	102	108
Hip	94	97	100	103	106	109	114	119	124	129
Back length	41,4	41,4	41,6	41,8	42	42,2	42,4	42,7	43	43,3
Arm length	59,3	59,6	59,9	60,2	60,5	60,8	61,1	61,4	61,7	62
Upper arm	26	27	28	29	30	31	32	34	36	38
Back width	15,5	16	16,5	17	17,5	18	18,5	19,2	19,9	20,6
Neck circumference	34,6	35,2	35,8	36,4	37	37,6	38,2	39,4	40,6	41,8
Front length	43,6	44,2	44,8	45,4	46	46,6	47,2	48,3	49,4	50,5
all measurements in cm										

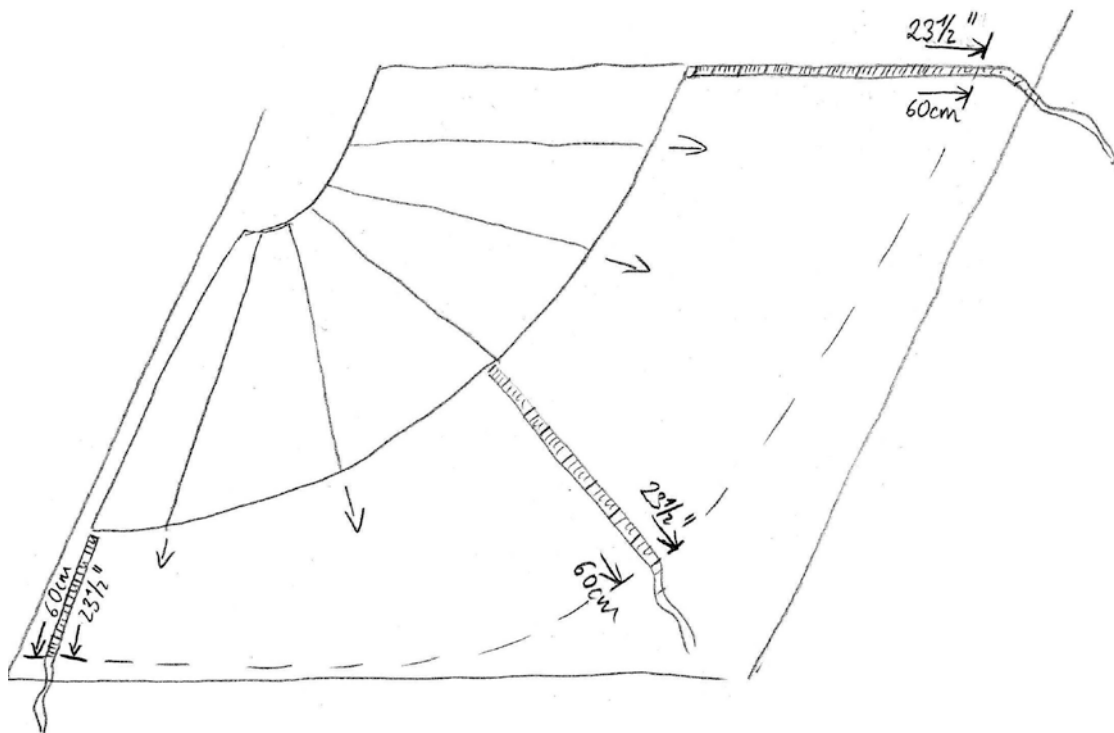
**Seam allowance included ½" (1,5cm), hem 1 ¼" (3cm) included.**

## First considerations

Do I want a pocket or not?

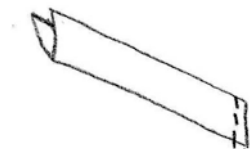
Where do I want to close the skirt? There are two possibilities, at the side seam or the centre back. When you want to close the skirt at the side seam you can cut the back part on fold of fabric, please note  $\frac{1}{2}$ " (1,5cm) seam allowance at the centre back. If you want to close at the centre back it is better to cut the back parts separately.

To save time and money sticking lots of sheets together, the pattern of the back part comes shortened. Lay the pattern directly on the fabric and lengthen  $23\frac{1}{2}$ " (60cm) with a ruler or a measuring tape as shown below. The length of the finished skirt will be 39" (100cm).



## Prepare back parts:

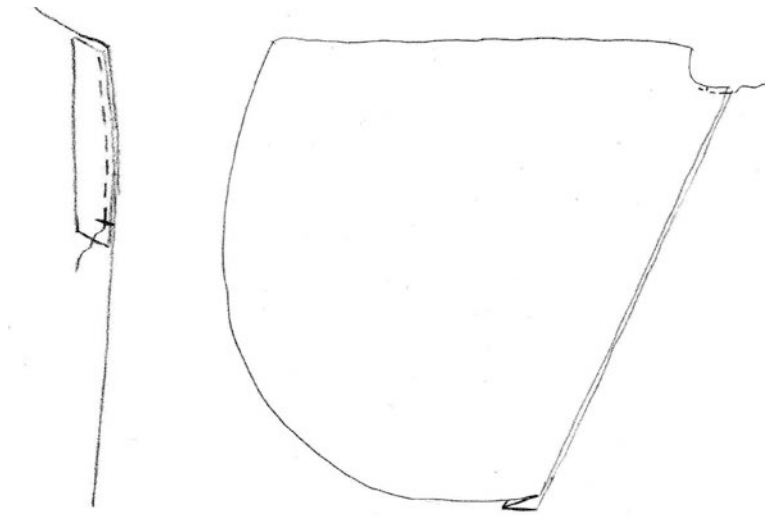
First prepare the placket. Fold in the middle, right sides together, sew one of the narrow edges, cut back seam allowance, turn inside out and iron.



If you prefer to close the skirt at the centre back sew the placket to right side of left skirt back part, end at the marking. Then close centre back, end exactly at the marking, pulling the placket to the side. Be careful not catching the placket.

Turn in the seam allowance at the right side, iron and fix either with invisible hand stitches or machine stitches.

Mark pleats at the centre back, fold an iron. Baste at the upper edge.

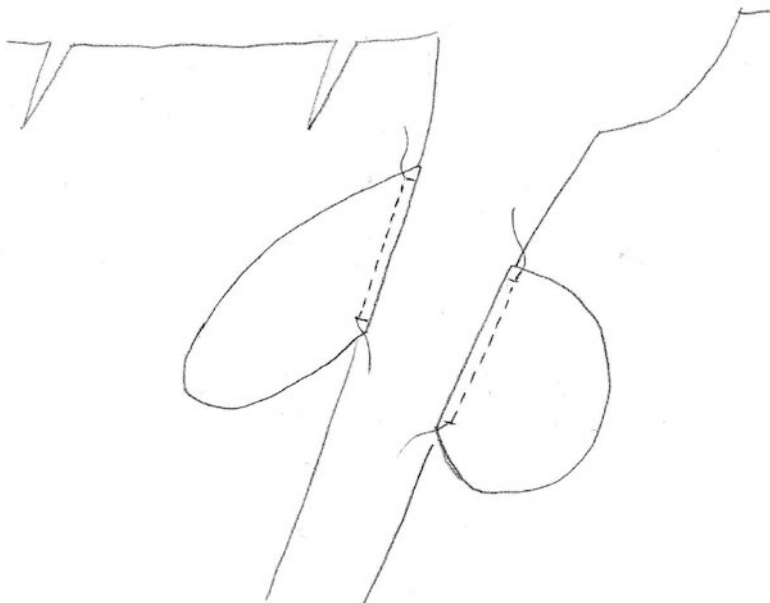


### **Pocket:**

Close darts in front piece.

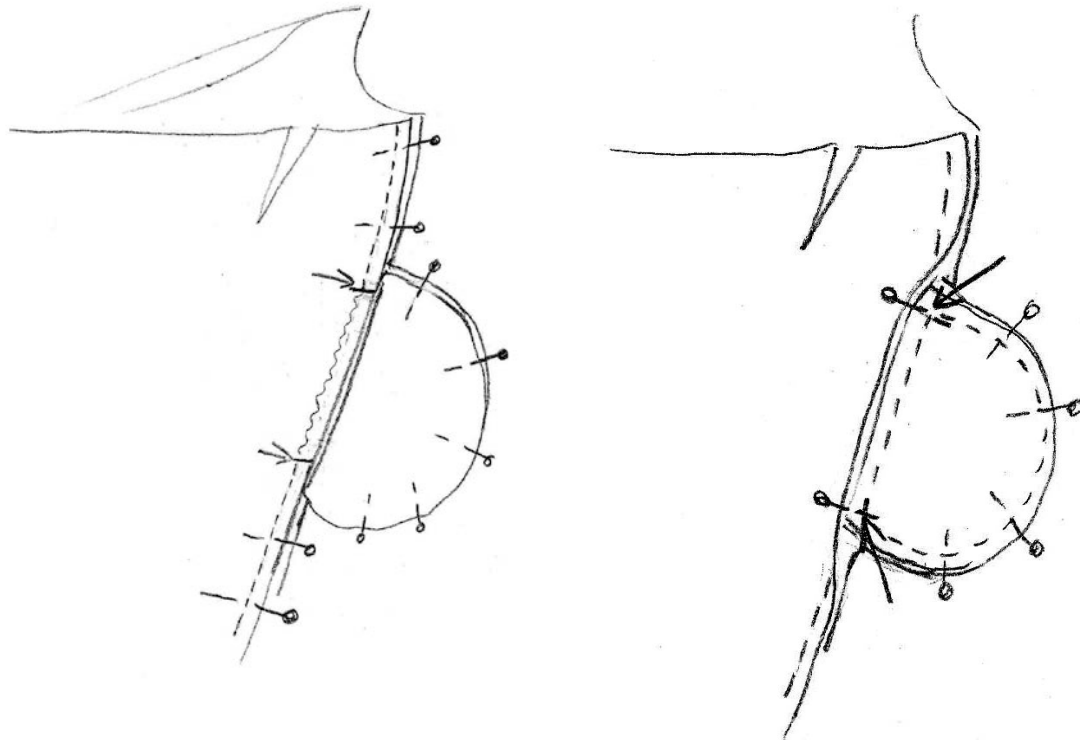
If you use a very stiff and heavy fabric for the skirt cut out the pocket pouches from a soft cloth. Otherwise you would see them later from the right side.

Transfer markings exactly. Stitch plackets to right side of front and back part. End exactly at markings.



Turn pocket pouches over seam line and pin together front and back part exactly. Stitch side seam, end at the markings (arrows). Don't stitch along waved line.

Next turn seam allowances towards skirt parts and stitch pocket pouches together. End exactly at markings (arrows).



Close remaining seams.

### **Waistband:**

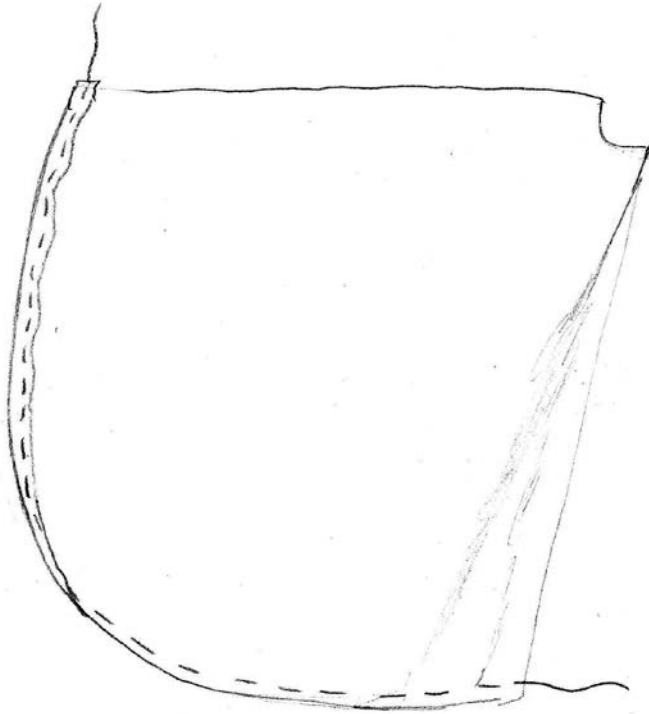
Reinforce outer part with interlining, close side seams. Pin the two parts of waistband with right sides together. Stitch at upper edge and narrow sides. Cut back seam allowances, turn inside out and iron.

Sew Waistband to skirt, right sides together. On inside part of waistband turn in seam allowance and sew by hand.

Pointed waistband: Just cut outer waistband with point. Reinforce outer waistband (without seam allowance at long edges) and sew side seams. Sew inner waistband to skirt, fix outer waistband with invisible stitches.

**Seam:**

Sew along hem with gathering stitches, turn in the hem and iron in the excess fabric width. Sew the hem with invisible stitches by hand. Optional trim the hem with a braid.



Sew on hooks and eyes.

## Fanskirt 1890 size 18-26

Recommended fabric: middleweight woven fabric

Fabric required: 4,3 yd. 55" wide / 400cm with a width of 140cm

Interlining, hooks and eyes

### Pieces:

#1 front: cut 1 on fold of fabric

#2 back: cut 2

#3 pocket: cut 4 (optional lighter fabric)

#4 placket: cut 1

#5 waistband pointed front: cut 1

#6 waistband straight front: cut 2, cut 1 when pointed front is used

#7 waistband right side: cut 2

#8 waistband left side: cut 2

1/2" seam allowance included, hem 1" included

1,5 cm seam allowance included, hem 3cm included

## Rock 1890 Größe 44-52

Stoffempfehlung: festere Webstoffe

Stoffverbrauch: 400cm bei 140cm Breite

Einlage, Haken und Ösen

### Teile:

#1 Vorderteil: 1x im Stoffbruch

#2 Rückteil: 2x

#3 Taschen: 4x (eventuell leichteren Stoff verwenden)

#4 Untertritt: 1x

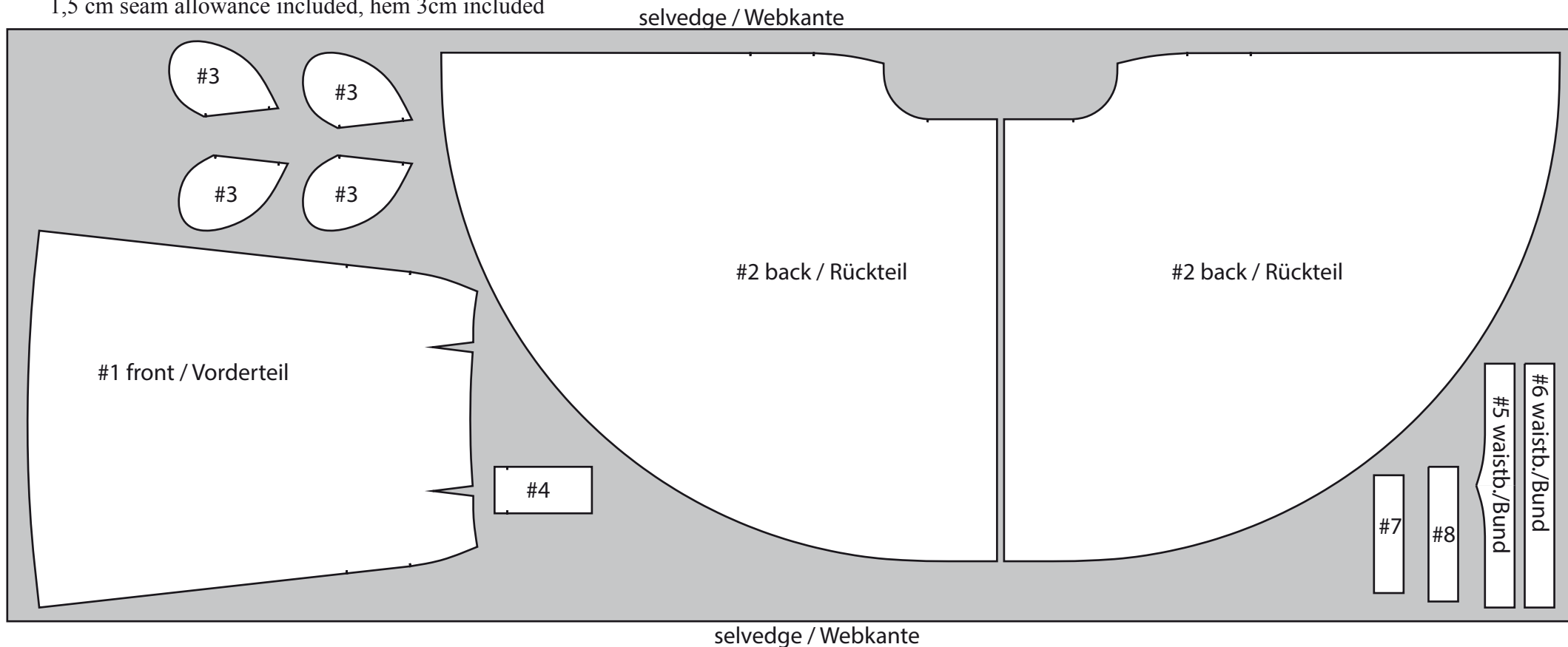
#5 Bund mit Spitze: 1x

#6 Bund gerade vorne: 2x, 1x wenn Bund mit Spitze genäht wird

#7 Bund rechte Seite: 2x

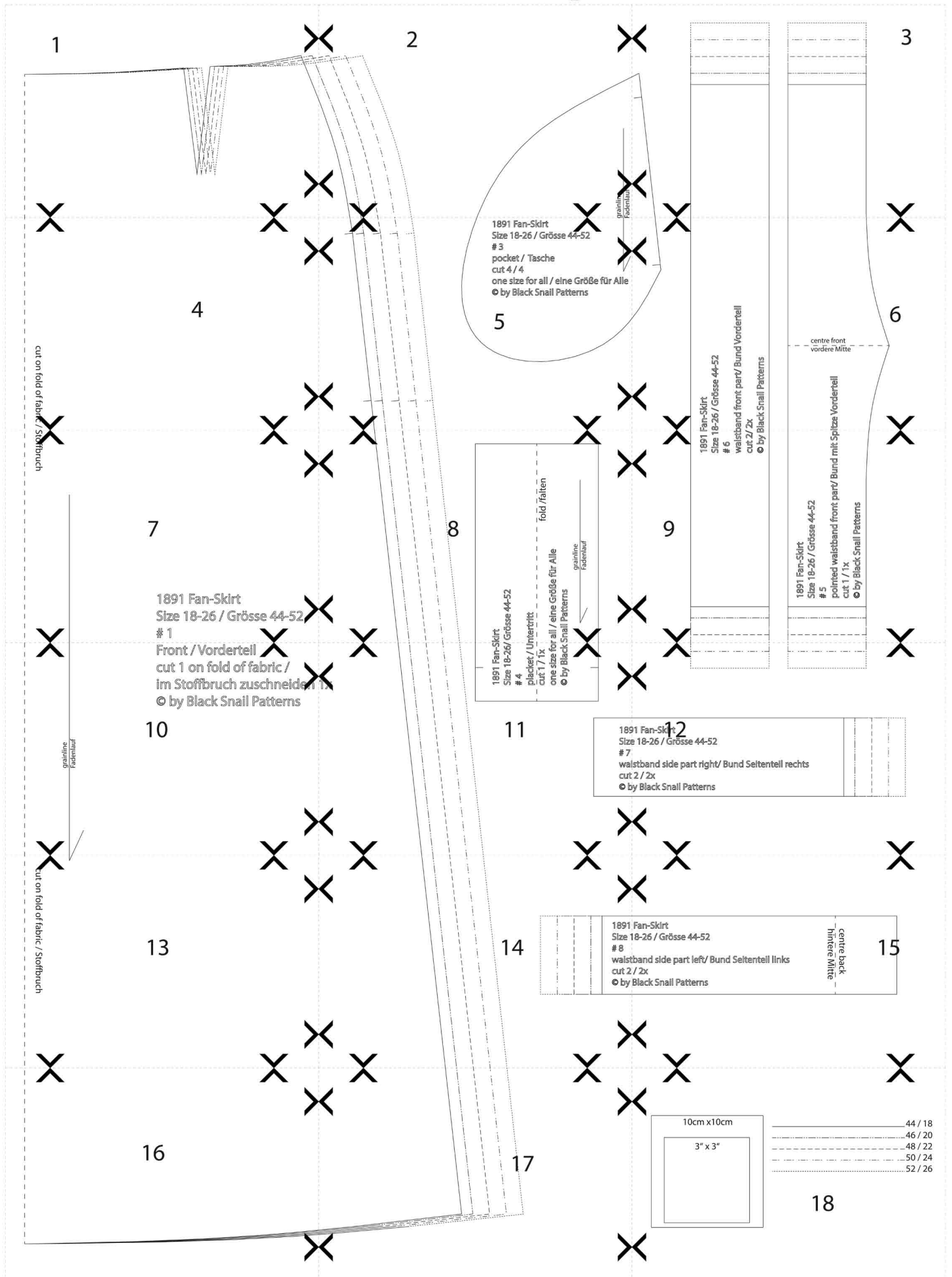
#8 Bund linke Seite: 2x

1,5 cm Nahtzugabe enthalten, Saum 3cm enthalten



# Diagram #1

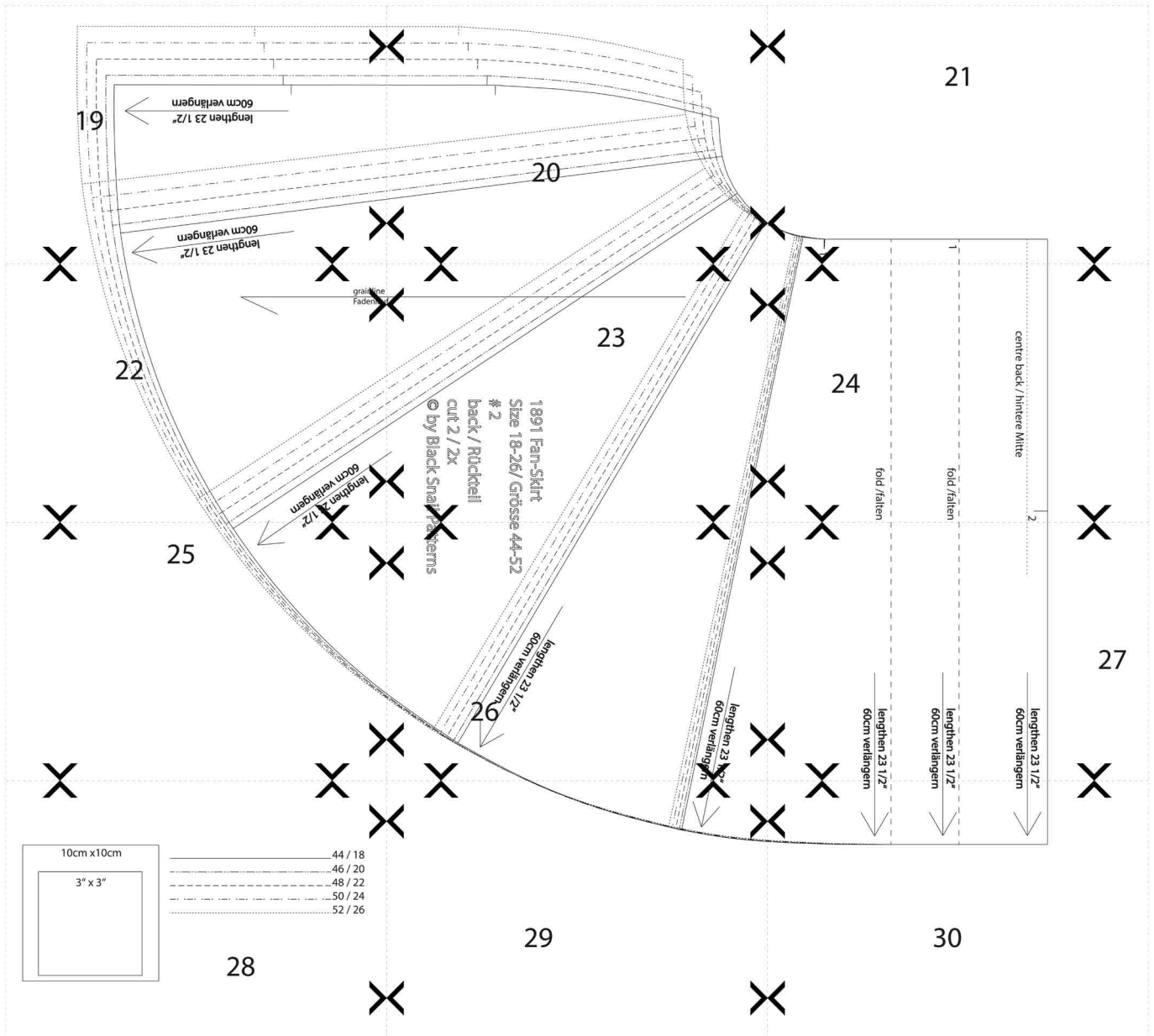
## Übersicht Bogen #1



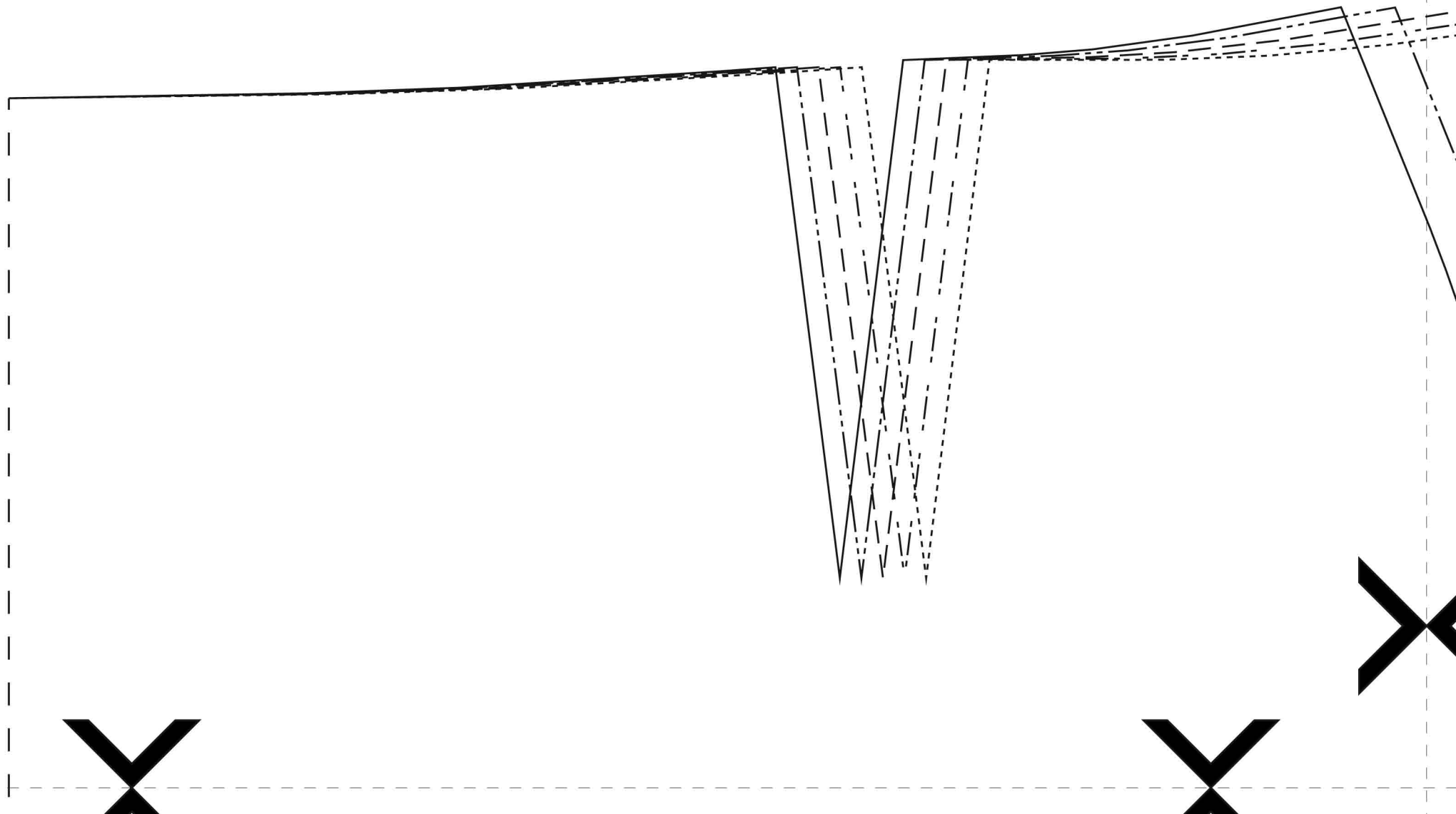


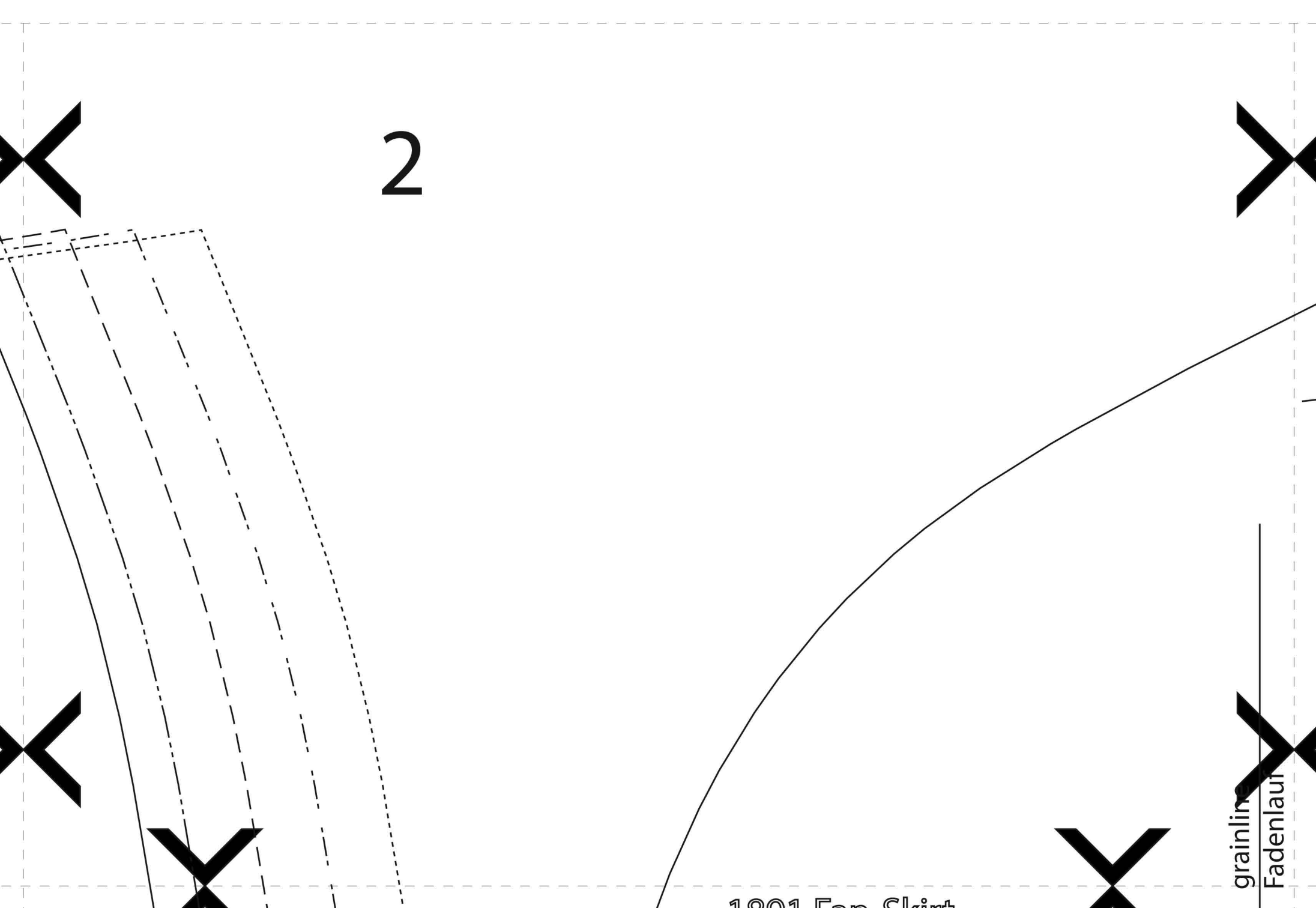
# Diagram #2

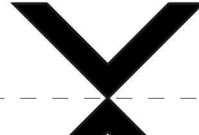
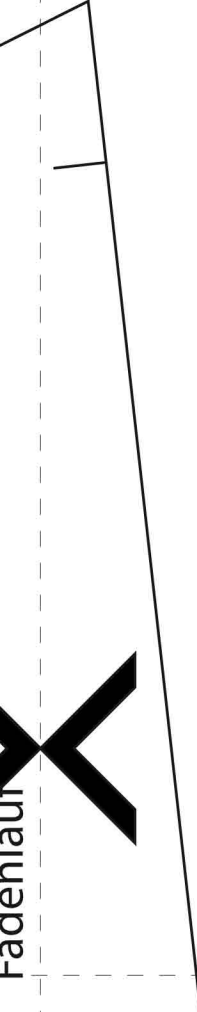
## Übersicht Bogen #2



1









3



4

cut on fold of fabric / St



1891 Fan-Skirt

Size 18-26 / Grösse 44-52

# 3

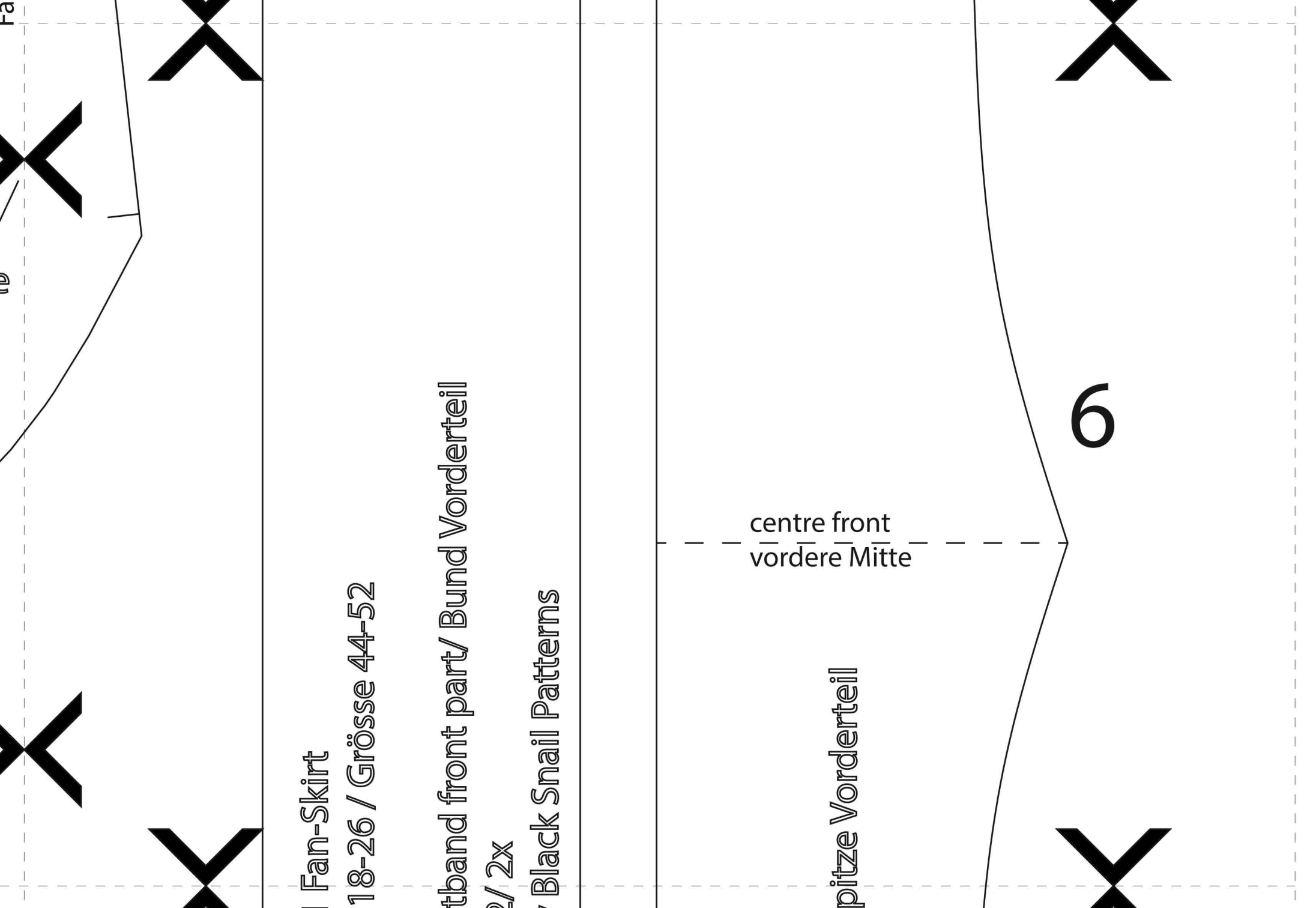
pocket / Tasche

cut 4 / 4

one size for all / eine Grösse für Alle

© by Black Snail Patterns

5



Fan-Skirt

18-26 / Grösse 44-52

Bundband front part/ Bund Vorderteil

2/ 2x

Black Snail Patterns

pitze Vorderteil

centre front  
vordere Mitte

6

/ Stoffbruch

7

1891 Fan-Skirt

Size 18-26 / Grösse 44-52

# 1

Front / Vorderteil



-Skirt

5/ Grösse 44-52

Untertritt

fold / falten

or all / eine Grösse für Alle  
k Snail Patterns

grainline

Fadenlauf

∞

9

1891 Fan-  
Skirt  
Size 18-26 /  
Größe 44-52  
# 6  
pointed  
waistband  
front part/  
Bund mit  
Spitz  
cut 2 / 1x  
© by Black  
Snail Patterns

1891 Fan-Skirt  
Size 18-26 / Größe 44-52  
# 5  
pointed waistband front part/  
Bund mit Spitze  
cut 1 / 1x  
© by Black Snail Patterns

Front / Vorderteil

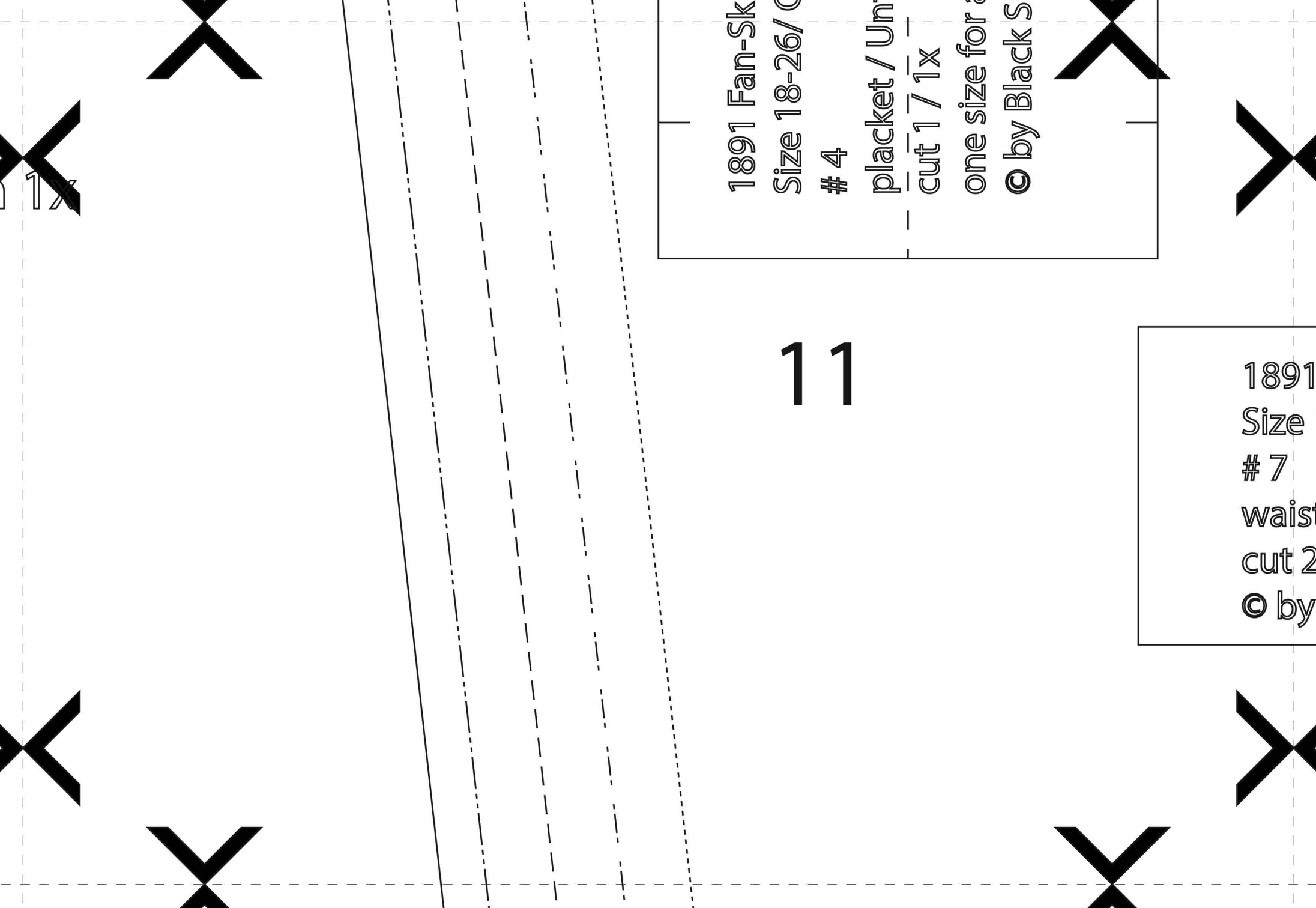
cut 1 on fold of fabric /  
im Stoffbruch zuschneiden 1

© by Black Snail Patterns

10

grainline

Fadenlauf



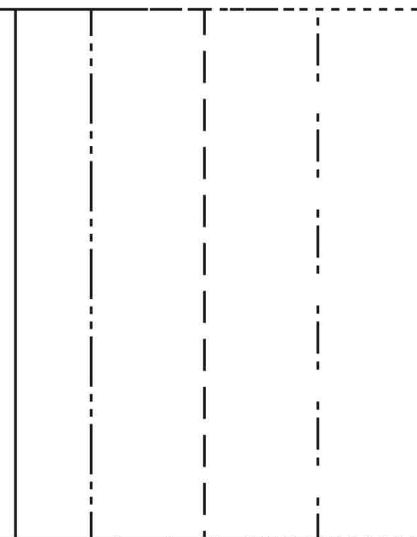
11

1891 Fan-Skirt  
Size 18-26 / 0  
# 4  
placket / Un-  
cut 1 / 1x  
one size for all  
© by Black S

1891  
Size  
# 7  
waist  
cut 2  
© by

391 Fan-Skirt  
Size 18-26 / Grösse 44-52

7  
Waistband side part right/ Bund Seitenteil rechts  
Cut 2 / 2x  
by Black Snail Patterns



13

cut on fold of fabric / Stoffbruch

14

1891 F  
Size 18  
# 8  
waistb  
cut 2 /  
© by B

1 Fan-Skirt

e 18-26 / Grösse 44-52

stband side part left/ Bund Seitenteil links

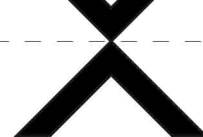
2 / 2x

y Black Snail Patterns

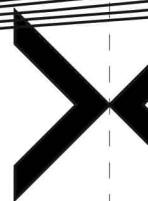
centre back  
hintere Mitte

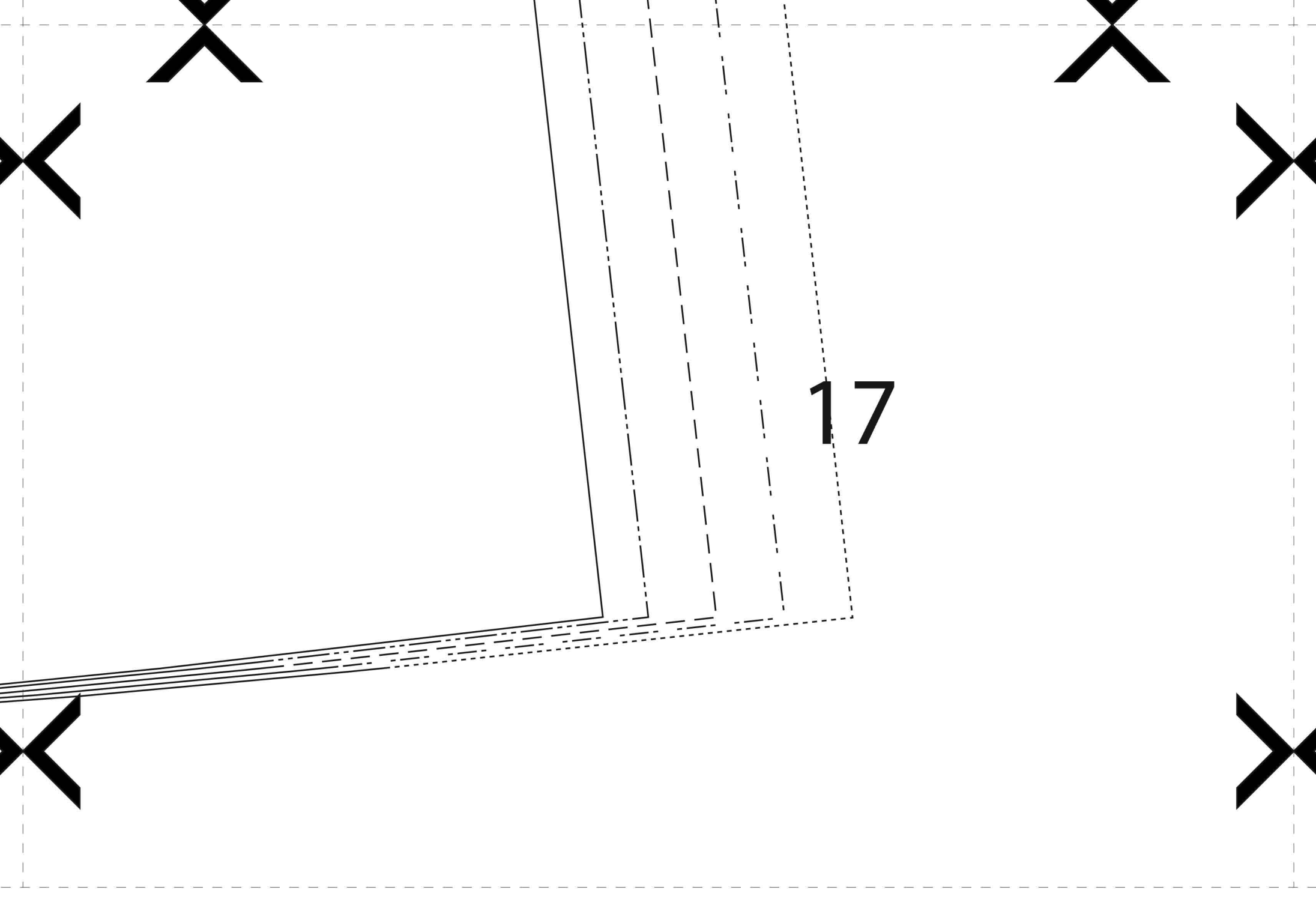
15

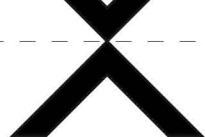




16







10cm x10cm

3" x 3"

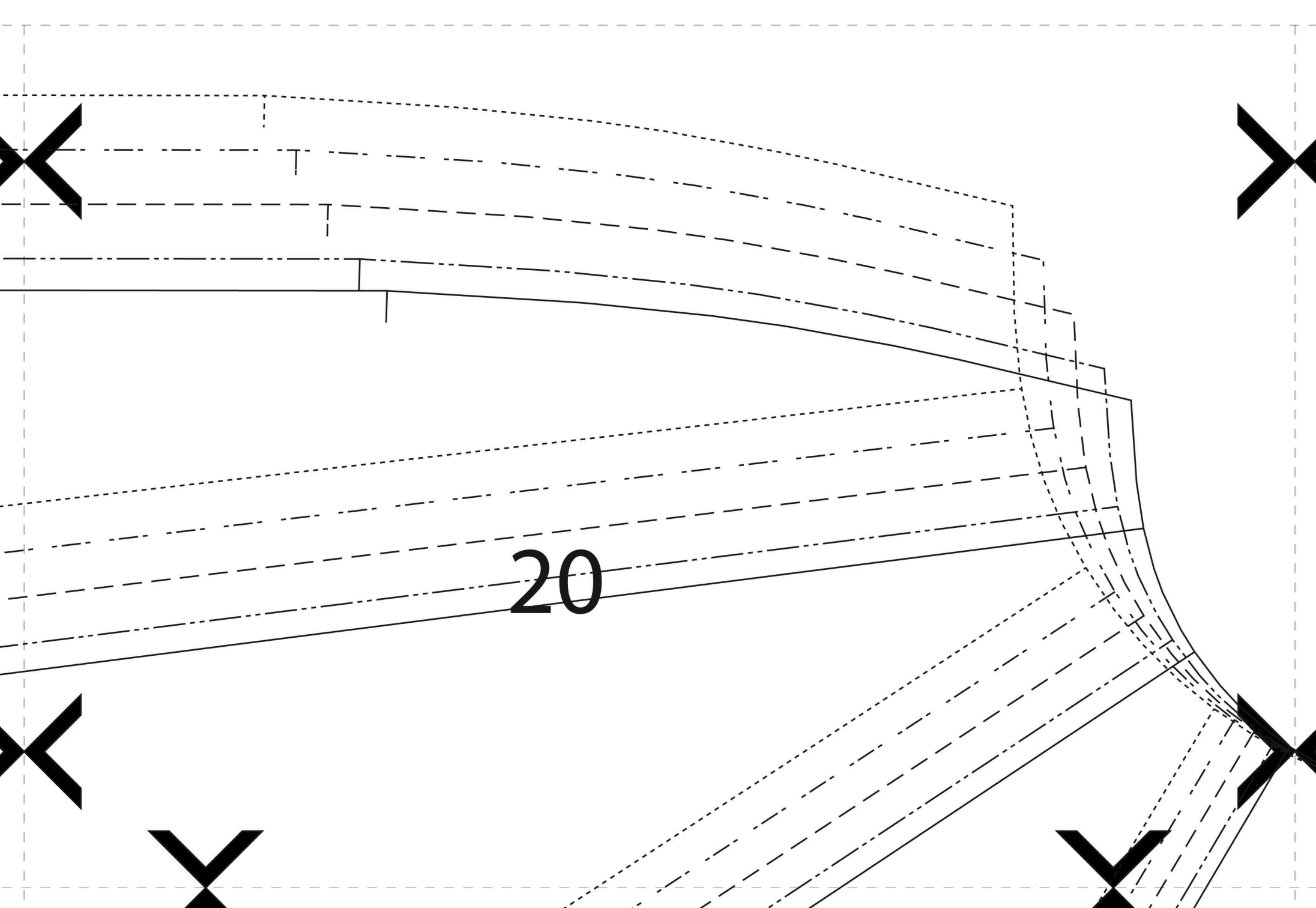
_____	44 / 18
-----	46 / 20
- - - - -	48 / 22
- . - . -	50 / 24
.....	52 / 26

18

19

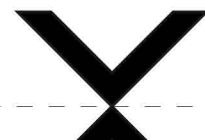
lengthen 23 1/2"  
60cm verlängern

lengthen 23 1/2"  
60cm verlängern





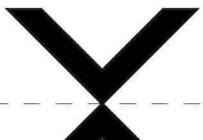
21



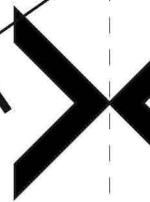


grainline  
Fadenlauf

22



lengthen 2 1/2"  
60cm verlängern



23

1891 Fan-Skirt  
Size 18-26/ Grösse  
# 2  
back / Rückteil  
cut 2 / 2x  
© by Black Snail Patterns





centre back / hintere Mitte

2

fold /falten

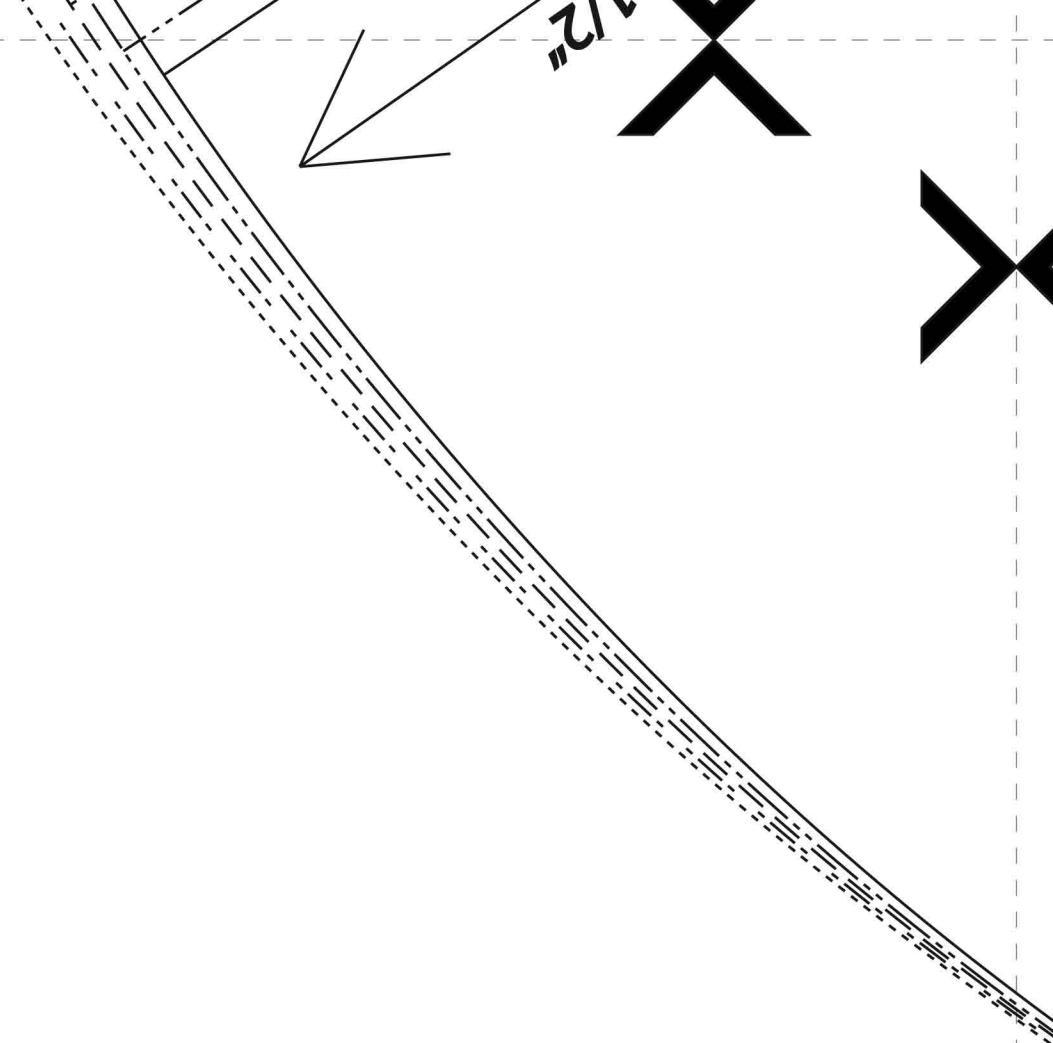
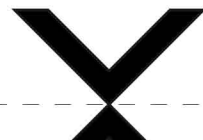
fold /falten

24





25



lengthen 23 1/2"  
60cm verlängern

se 44-52

lengthen 23 1/2"  
60cm verlängern

patterns

27

lengthen 23 1/2"  
60cm verlängerr

lengthen 23 1/2"  
60cm verlängerr

lengthen 23 1/2"  
60cm verlängerr



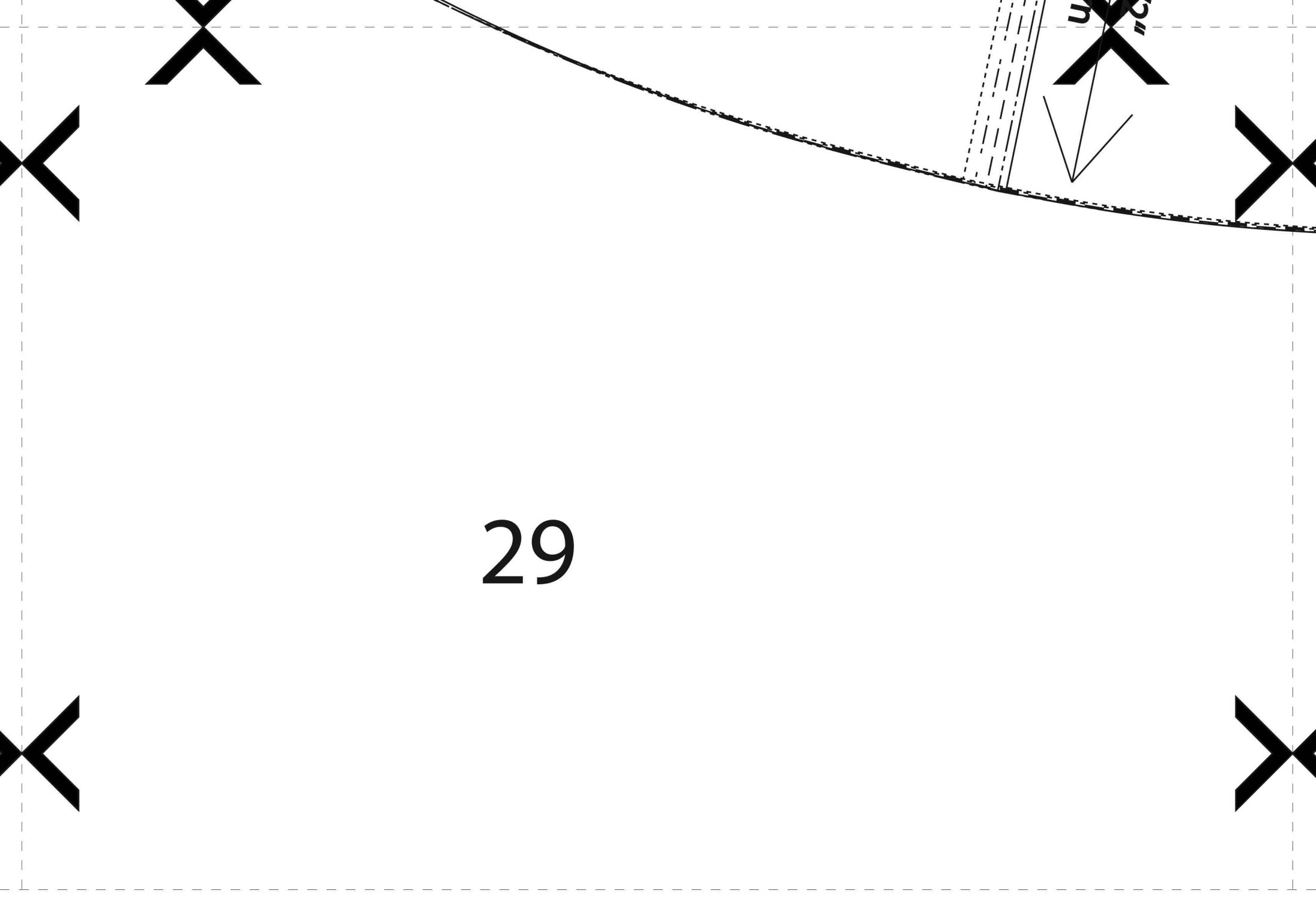
10cm x10cm

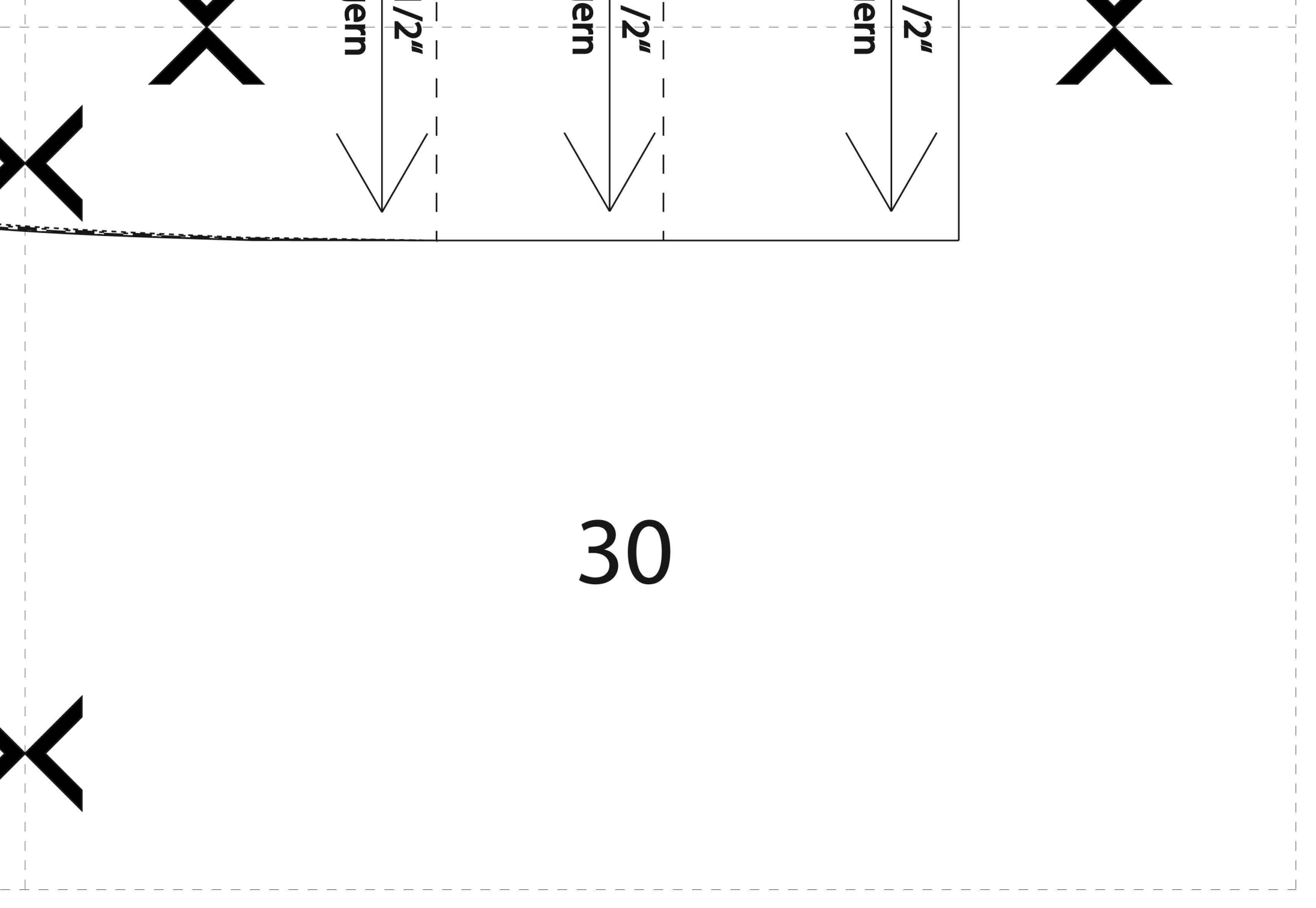
3" x 3"

_____	44 / 18
-----	46 / 20
- - - - -	48 / 22
- . - . -	50 / 24
.....	52 / 26

28

29





30