



Black Snail Patterns

from past to present
by R. Kohlberger



Sewing Pattern #0815

Cycling Bloomers about 1900

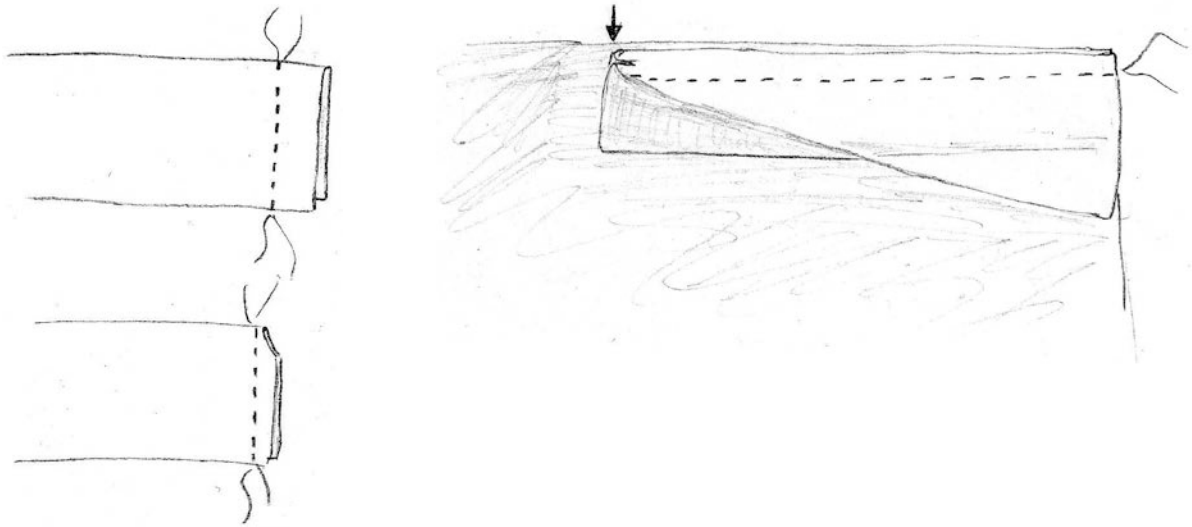
Size US 20-30 (EU 46-56)



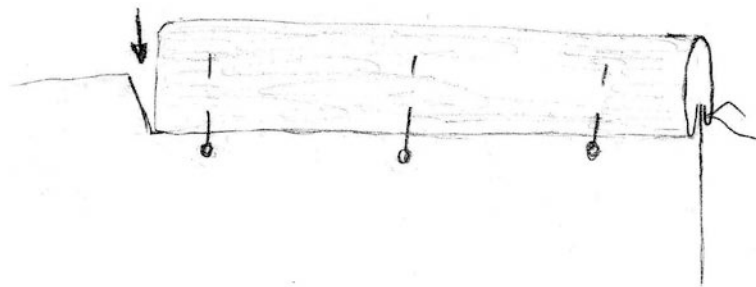
Sewing instructions

The bloomers have a closed crotch seam, they will be closed with buttons at the waistband. The knee straps are closed with buttons too.

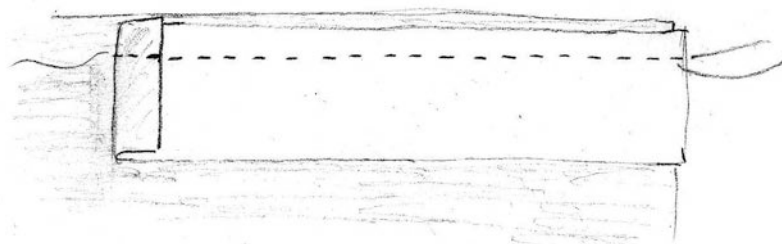
Prepare button stays: Fold straps for the button stays lengthwise, right sides together. Sew along one of the short edges. Trim seam allowance, turn inside out, press. Open the strap again and pin to the back trouser, just with one layer, sew. Clip seam allowance of back trouser at the end of the seam.



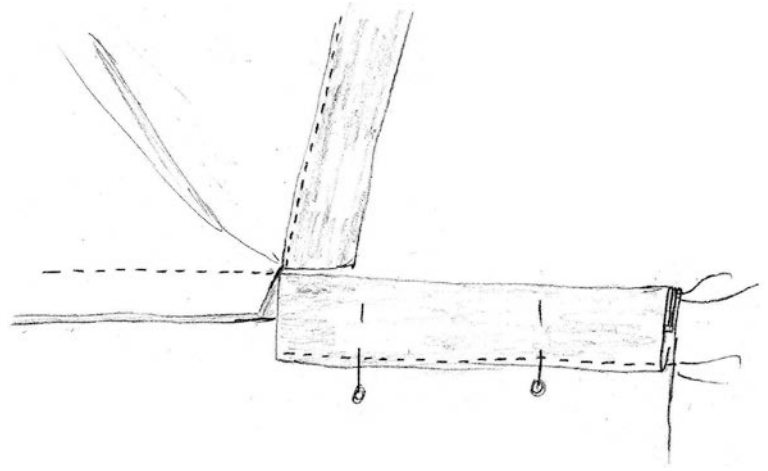
Fold inside the loose SM, fold button stay over the seam and pin to the trouser so that the edge will overlap the seam a little bit. Sew from the right side exactly along the seam.



Prepare straps for buttonhole facing: fold up seam allowance of the lower edge and sew to front trouser.



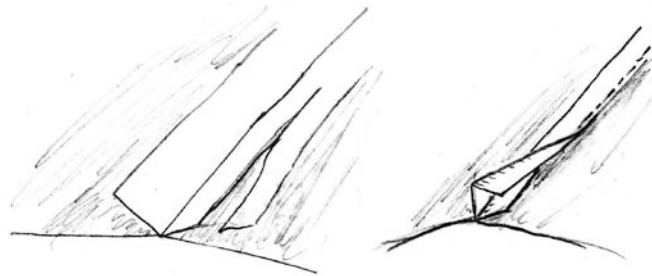
Close side seams respecting marks.
Fold in seam allowance of
buttonhole facing, fold over the
edge and stitch down.



Perform the side seam as a flat felled seam. Trim back seam allowance of the front
trouser, fold over the seam allowance of the back trouser and stitch down. Line up

button stays
buttonhole
stitch together
the fly.

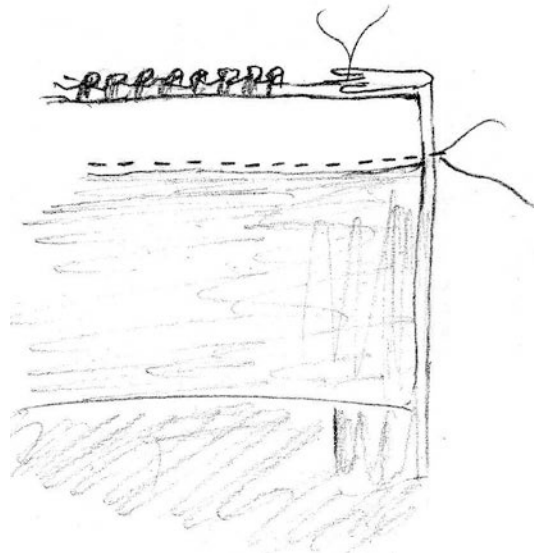
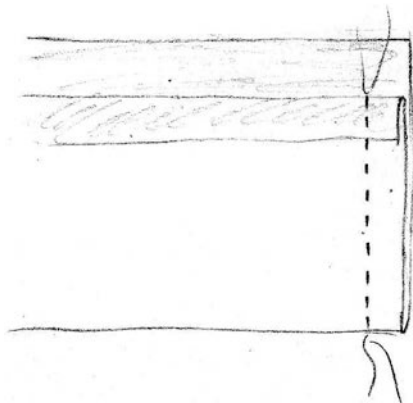
and
facing and
at the end of



Close inner seams of the bloomers. Sew seam either as a flat felled seam or as a
French seam.

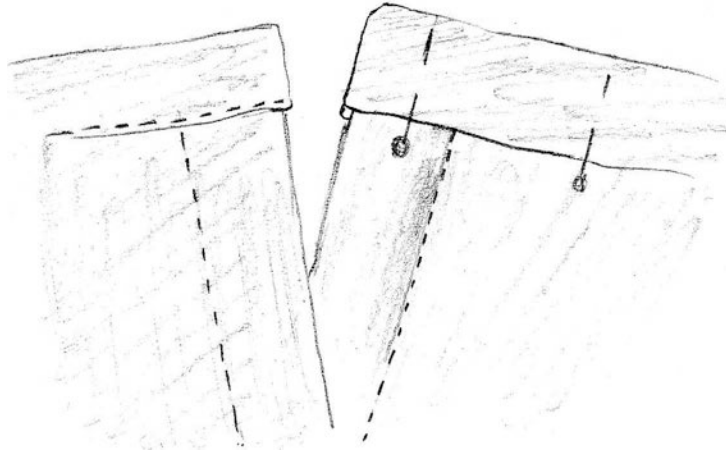
Sew with large stitches along the edge of the pant legs and gather.

Prepare knee straps. Fold pieces lengthwise, right sides together, sew along short
edges, fold in seam allowance of inner part while sewing. Turn inside out, press. Sew
knee strap to the pant legs, at the inside sew on straps by hand.

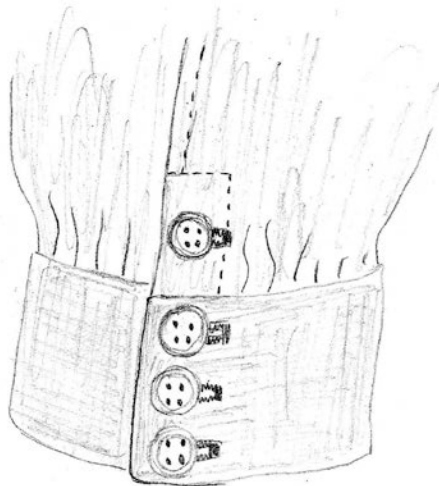


Close darts, close crotch seam, either as flat felled seam or as French seam.

Prepare waistband: Fold in seam allowances and press, fold straps lengthwise, right sides together, sew along short edges. Turn inside out. Pin waistband to the trousers, fold all darts towards center back, sew through all layers.



Mark position of buttonholes and sew, sew on buttons.



Size Chart misses

General information for historical patterns:

For all historical patterns which would be worn over a Corset, waist circumference is reduced, according to the next smaller size. For Example you wear a size 14 with a bust measurement of 36" and a natural waist of 31" a waist reduction about 2" is already considered.

Please always do a mock-up first.

EUR	34	36	38	40	42	44	46	48	50	52	54	56
US	8	10	12	14	16	18	20	22	24	26	28	30
Body height					66							
Bust	31,5	33	34,5	36	38	39,5	41	43,5	45,5	48	50,5	53
Waist	26	27,5	29	30,5	32	34	35,5	38	40	42,5	45	47
Hip	37	38	39	40,5	42	43	45	47	49	51	53	55
Back length	16,5	16,5	16,5	16,5	16,5	16,5	17	17	17	17	17	17
Arm length	23	23	23,5	23,5	23,5	24	24	24	24,5	24,5	24,5	24,5
Upper arm circumf.	10	10,5	11	11,5	12	12	12,5	13,5	14	15	16	16,5
Back width	6	6	6,5	6,5	7	7	7,5	7,5	8	8	8,5	8,5
Neck circumference	13,5	14	14	15,5	15,5	15	15	15,5	16	16,5	17	17,5
all measurements in inch												

EUR	34	36	38	40	42	44	46	48	50	52	54	56
US	8	10	12	14	16	18	20	22	24	26	28	30
Body height					168							
Bust	80	84	88	92	96	100	104	110	116	122	128	134
Waist	66	70	74	78	82	86	90	96	102	108	114	120
Hip	94	97	100	103	106	109	114	119	124	129	134	139
Back length	41,4	41,4	41,6	41,8	42	42,2	42,4	42,7	43	43,3	43,6	43,6
Arm length	59,3	59,6	59,9	60,2	60,5	60,8	61,1	61,4	61,7	62	62	62
Upper arm circumf.	26	27	28	29	30	31	32	34	36	38	40	42
Back width	15,5	16	16,5	17	17,5	18	18,5	19,2	19,9	20,6	21,3	22
Neck circumference	34,6	35,2	35,8	36,4	37	37,6	38,2	39,4	40,6	41,8	43	44,2
all measurements in cm												

#0815 Cycling Bloomers 1900 size US 20-30 (EU 46-56)

Recommended fabric: cotton or linen fabric

Fabric required: 2.2yds. with a width of 51" (2m with a width of 130cm)

5/8" seam allowance included

1,5 cm seam allowance included

Pieces:

#1 front: cut 2

#2 back: cut 2

#3 button stay waist: cut 2

#4 buttonhole facing waist: cut 2

#5 button stay knee: cut 2

#6 button hole facing knee: cut 2

#7 front waistband cut 1 on fold of fabric

#8 back waistband cut 1 on fold of fabric

#9 knee straps: cut 2

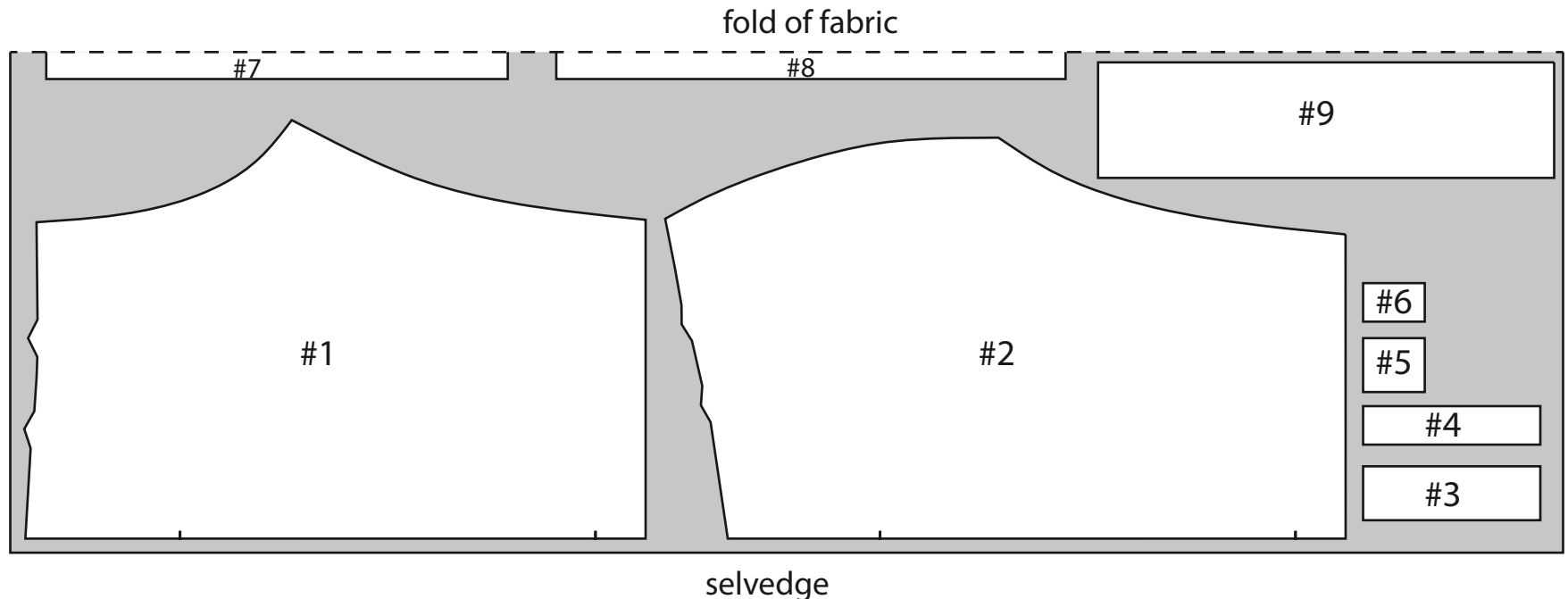


Diagram #1

Bogen #1

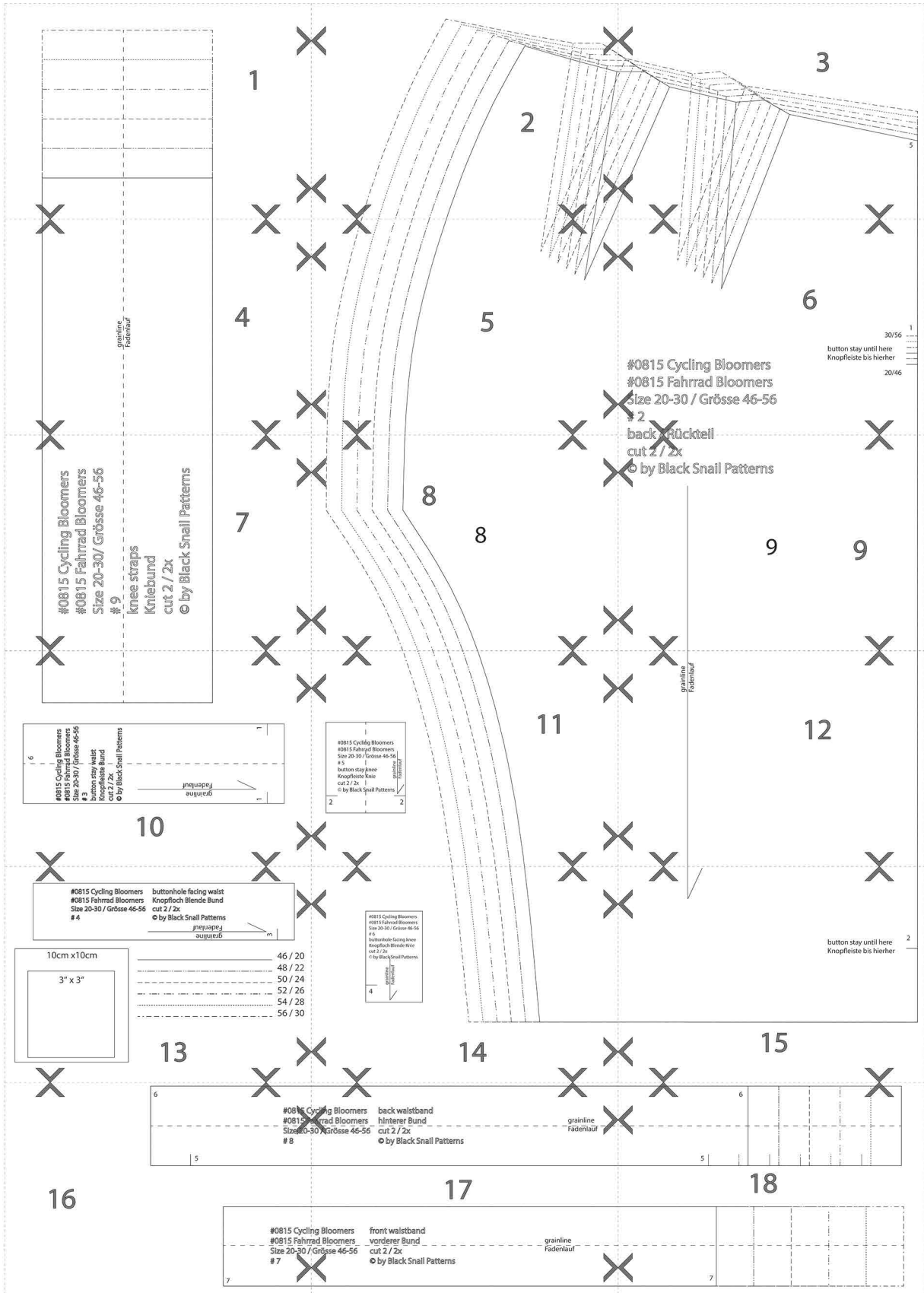
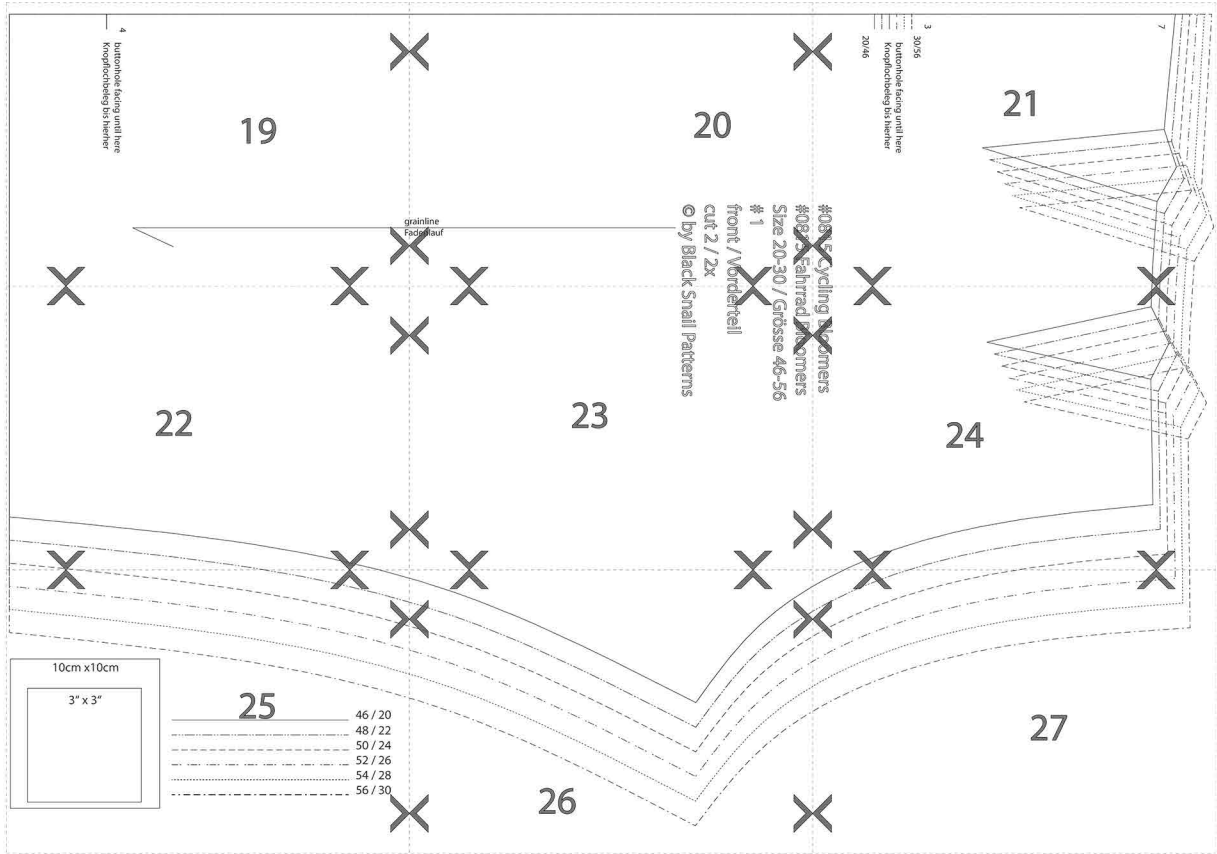
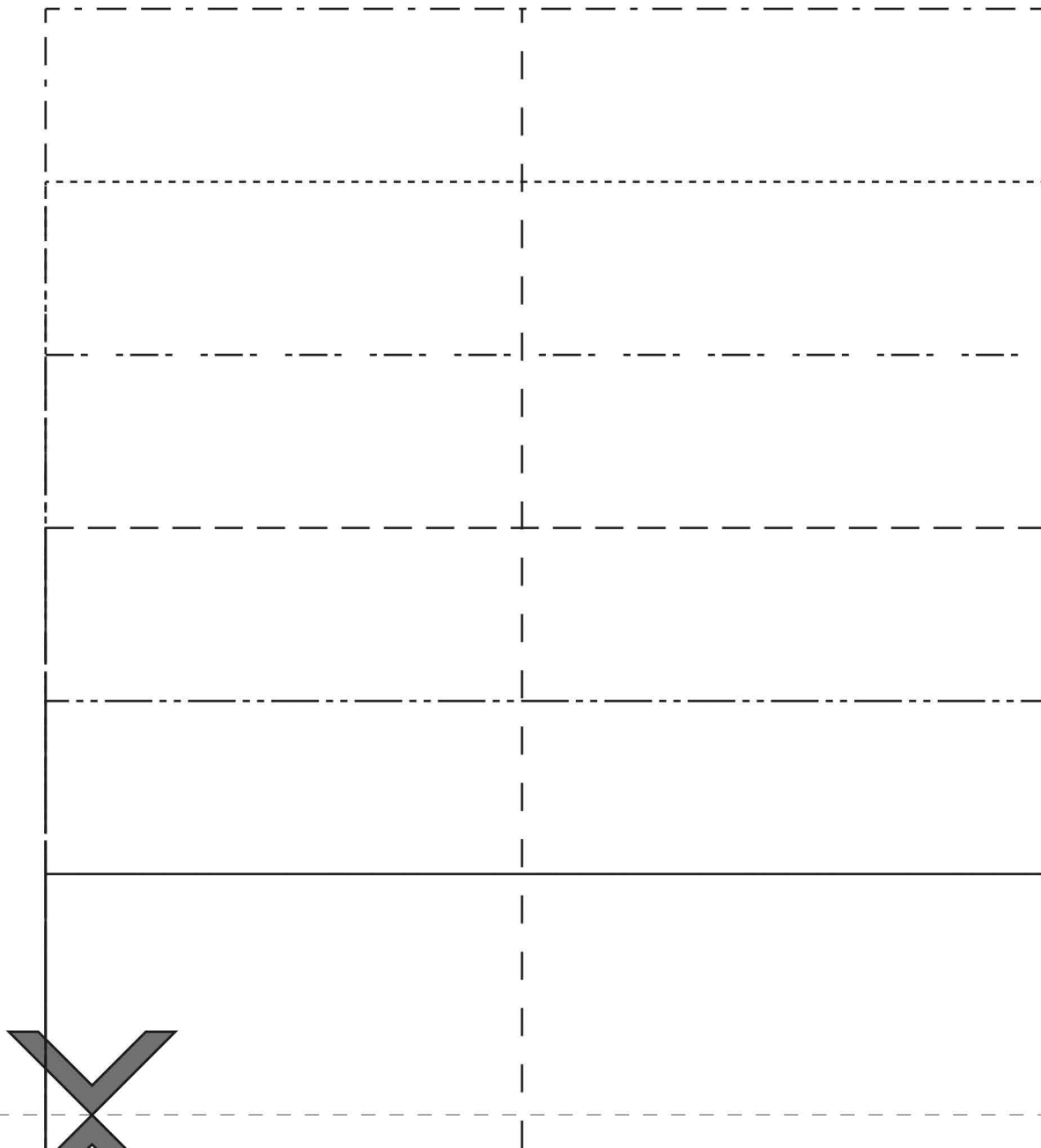


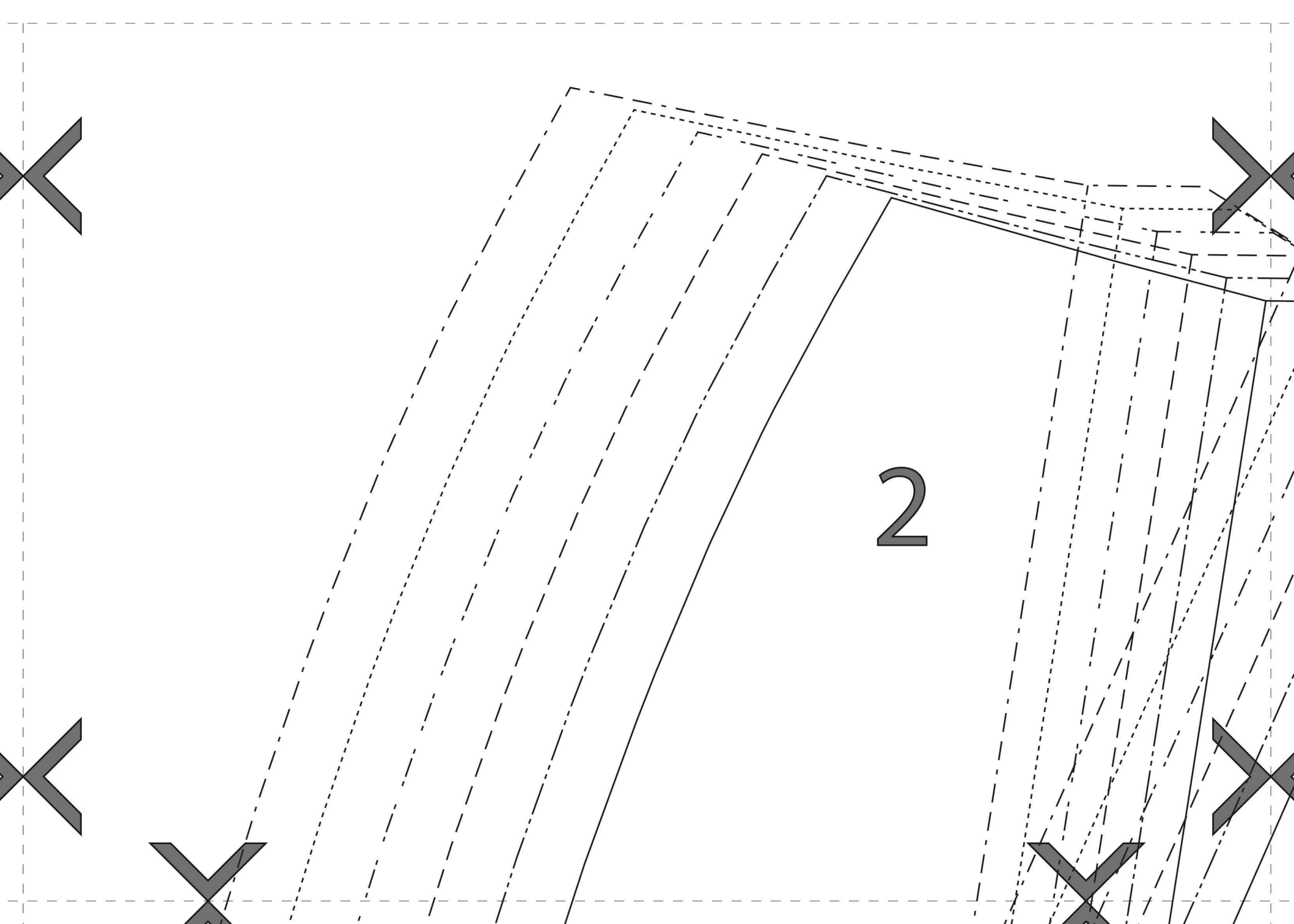
Diagram #2

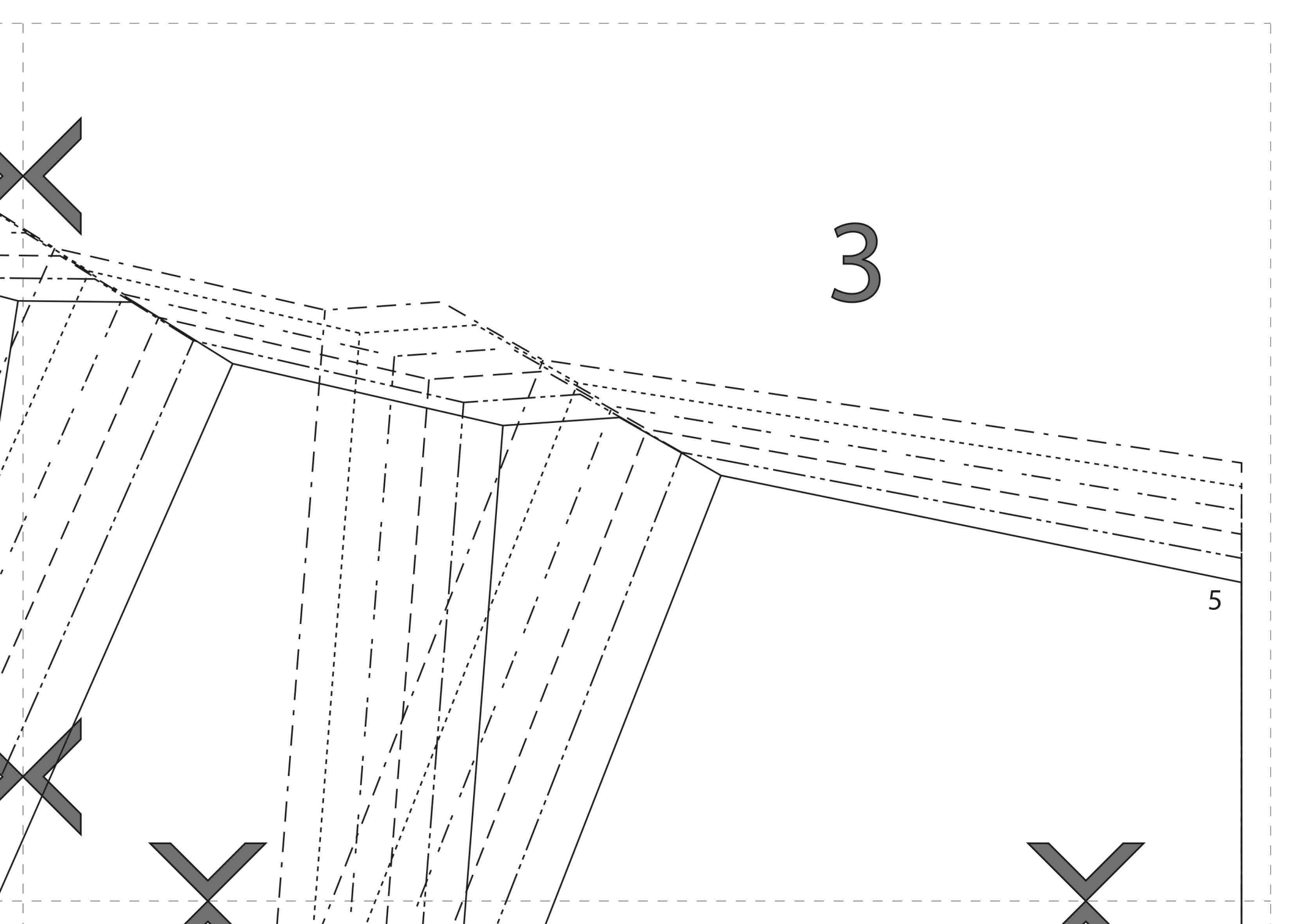
Bogen #2





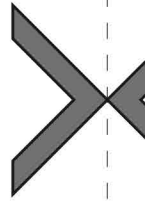
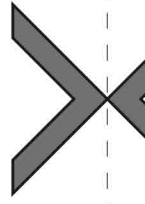
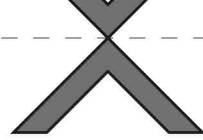
1







grainline
Fadenlauf



4

5

6

#0815 Cycling Bloomers

#0815 Fahrrad Bloomers

Size 20-30 / Grösse 46-56

2

back / Rückteil

1
30/56

button stay until here
Knopfleiste bis hierher

20/46

#0815 Cycling Bloomers
#0815 Fahrrad Bloomers
Size 20-30/ Grösse 46-56
9

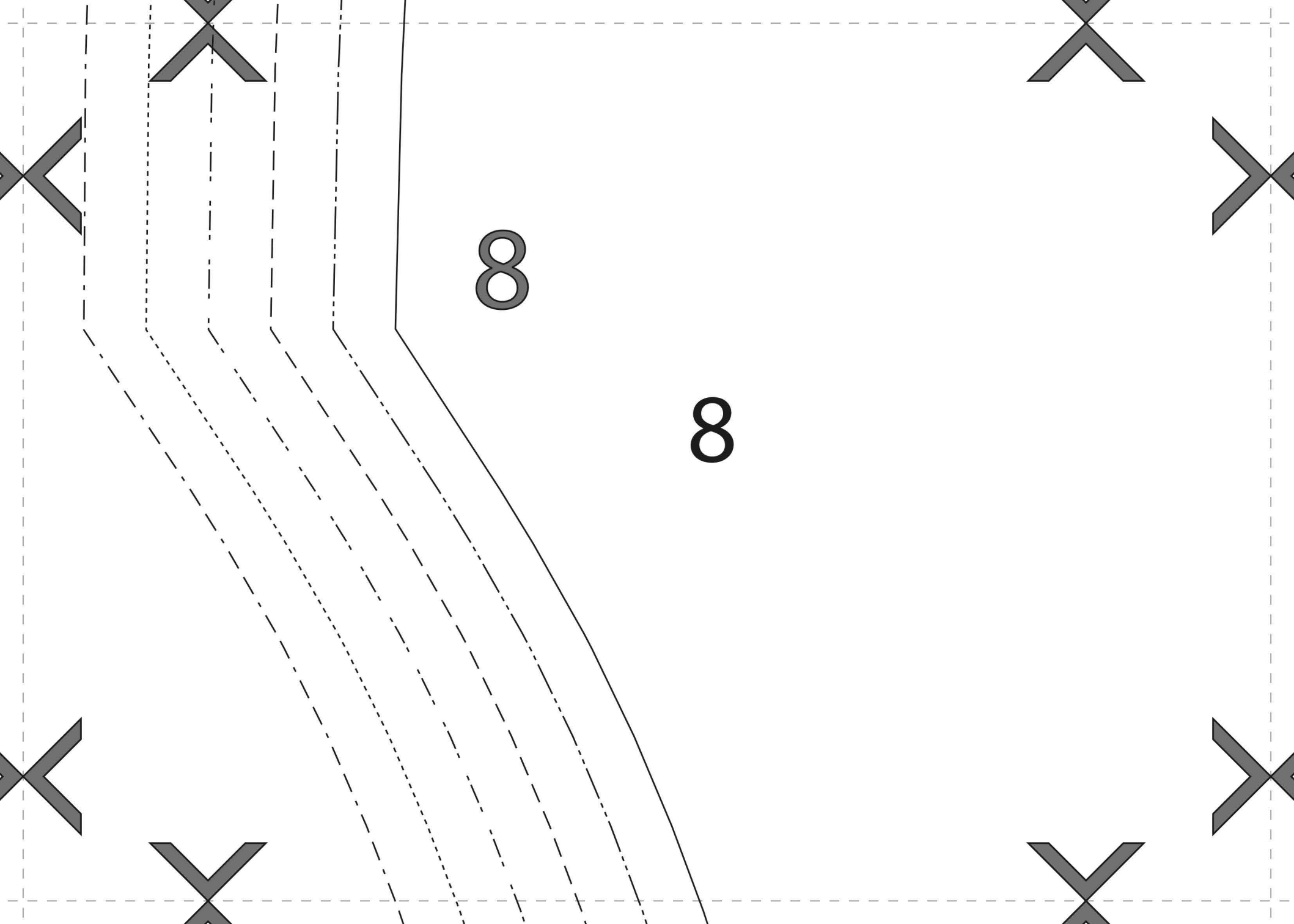
knee straps

Kniebund

cut 2 / 2x

© by Black Snail Patterns

7



back / Rückteil

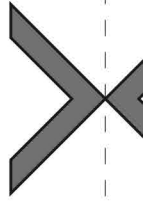
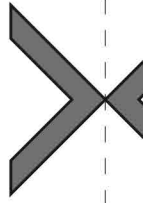
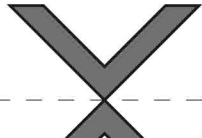
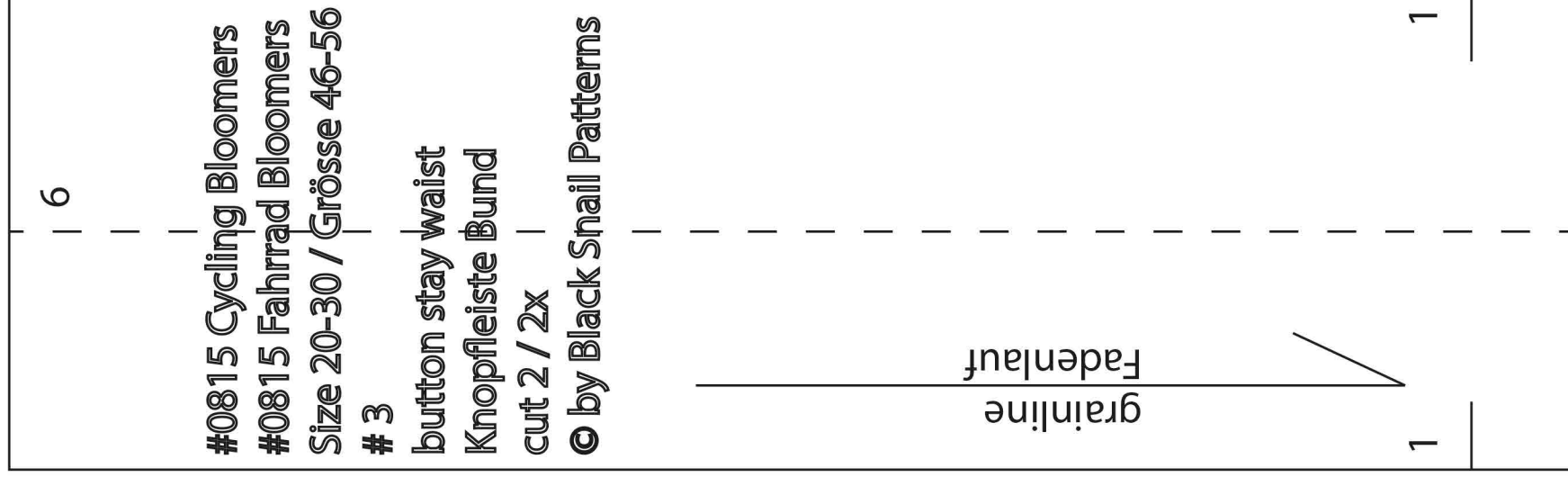
cut 2 / 2x

© by Black Snail Patterns

9

9

10



#0815 Cycling Bloomers

#0815 Fahrrad Bloomers

Size 20-30 / Grösse 46-56

5

button stay knee

Knopfleiste Knie

cut 2 / 2x

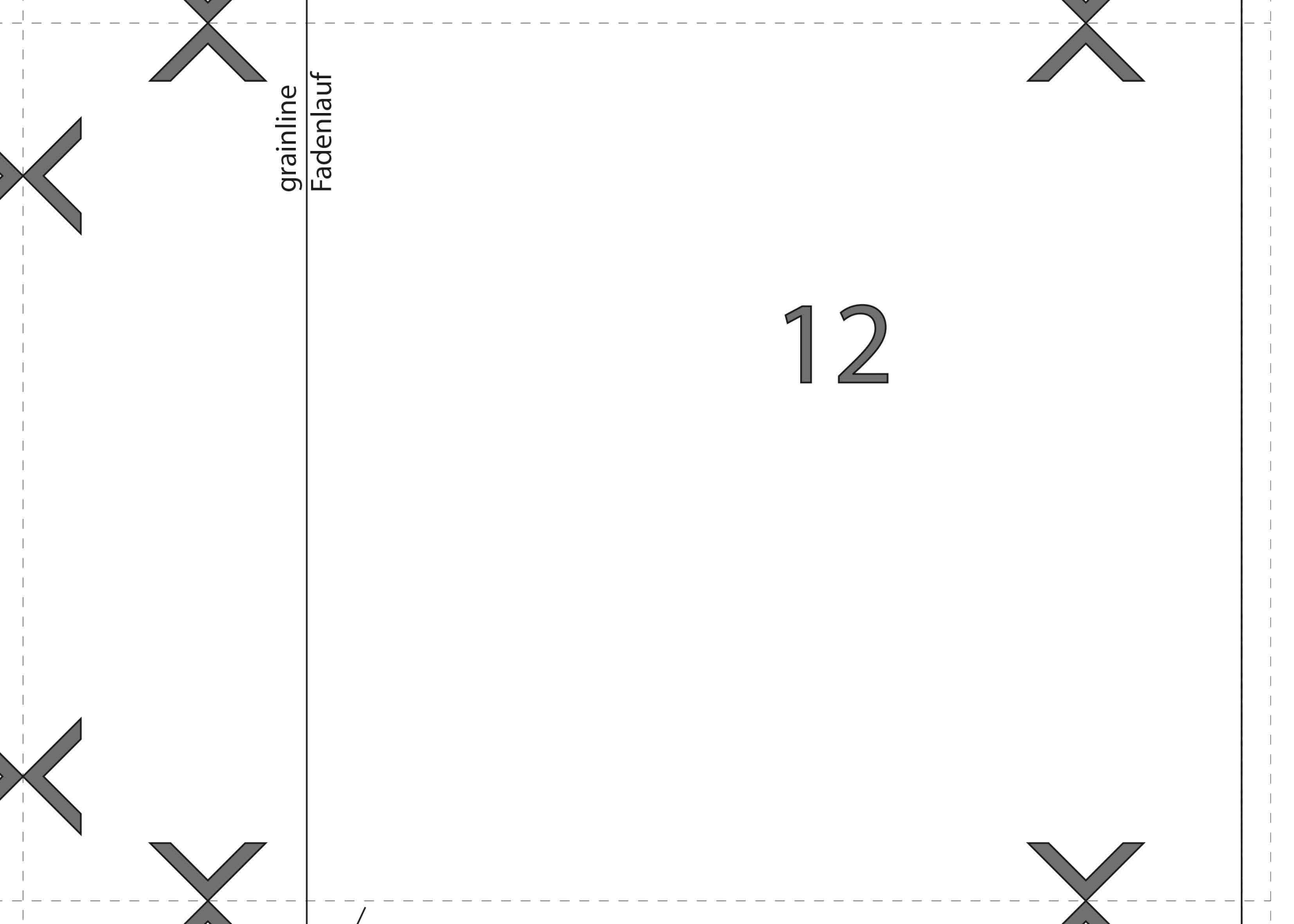
© by Black Snail Patterns

grainline
Fadenlauf

2

2

11



grainline
Fadenlauf

12

#0815 Cycling Bloomers
#0815 Fahrrad Bloomers
Size 20-30 / Grösse 46-56
4

buttonhole facing waist
Knopfloch Blende Bund
cut 2 / 2x
© by Black Snail Patterns

grainline
Fadenlauf

3

10cm x10cm

3" x 3"

_____	46 / 20
-----	48 / 22
- - - - -	50 / 24
- - - - -	52 / 26
.....	54 / 28
- - - - -	56 / 30

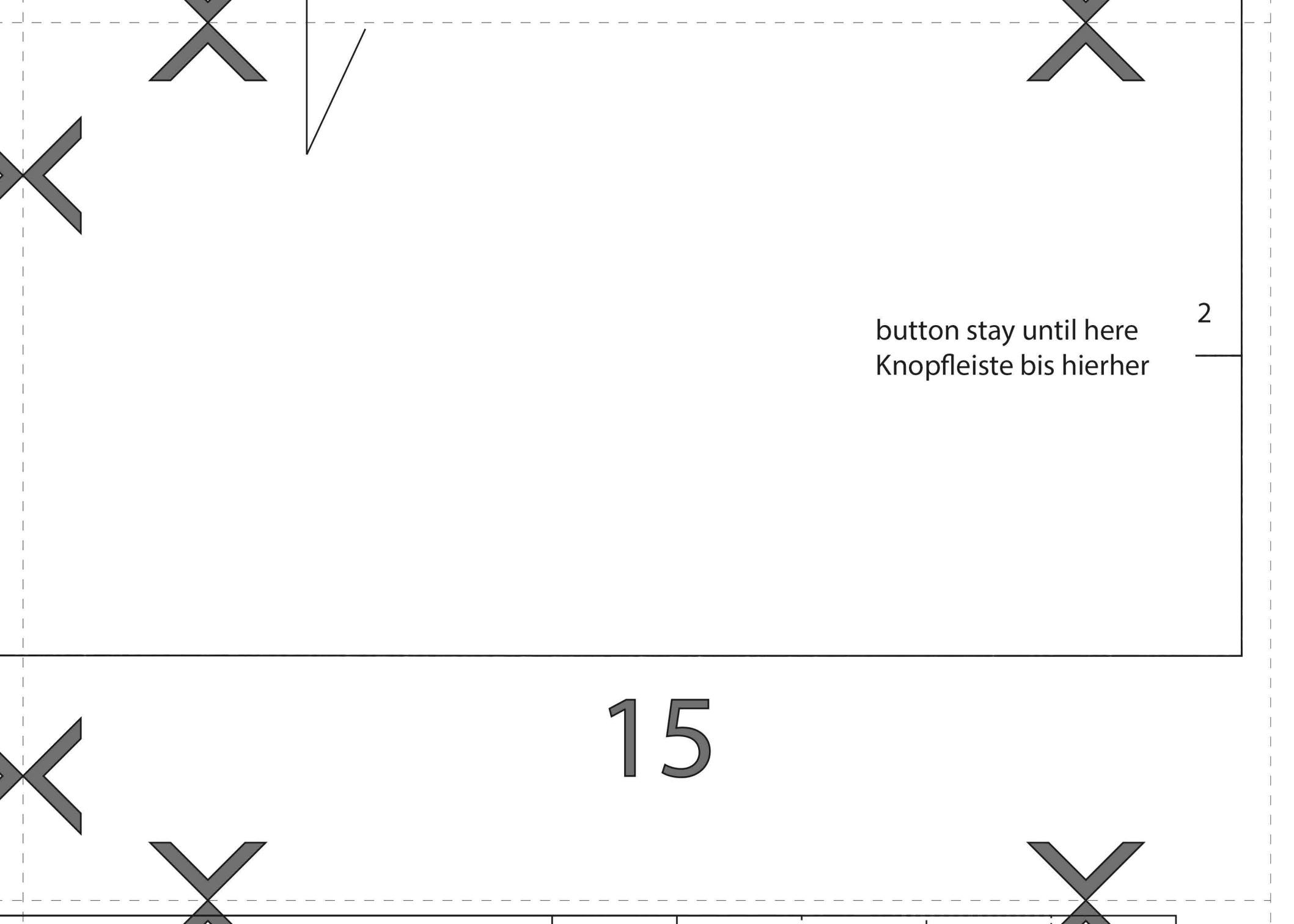
13

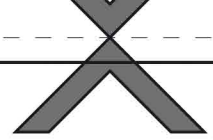
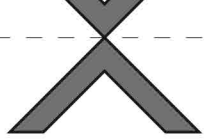
#0815 Cycling Bloomers
#0815 Fahrrad Bloomers
Size 20-30 / Grösse 46-56
6
buttonhole facing knee
Knopfloch Blende Knie
cut 2 / 2x
© by Black Snail Patterns

4

grainline
Fadenlauf

14





6

#0815 Cyc
#0815 Fahr
Size 20-30
8

5

16

#0815 Cycling
#0815 Fahrrad
Size 20-30 / G
7

7



Cycling Bloomers
Fahrrad Bloomers
0-30 / Grösse 46-56

back waistband
hinterer Bund
cut 2 / 2x

© by Black Snail Patterns

grainline
Fadenlauf

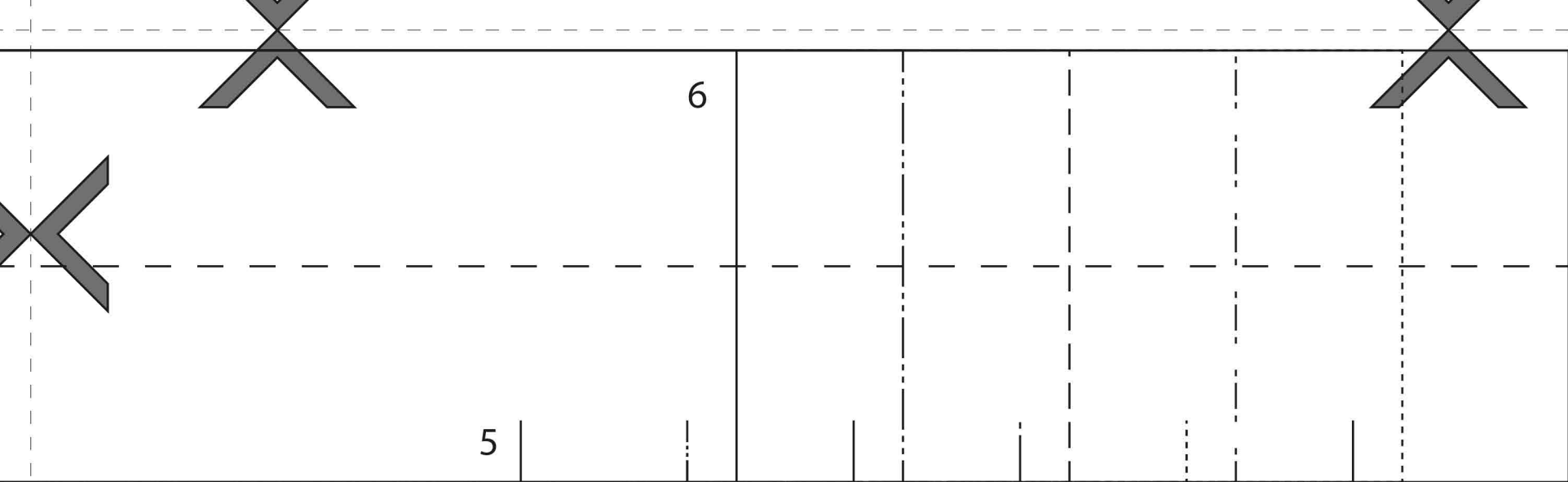
17

Cycling Bloomers
Fahrrad Bloomers
/ Grösse 46-56

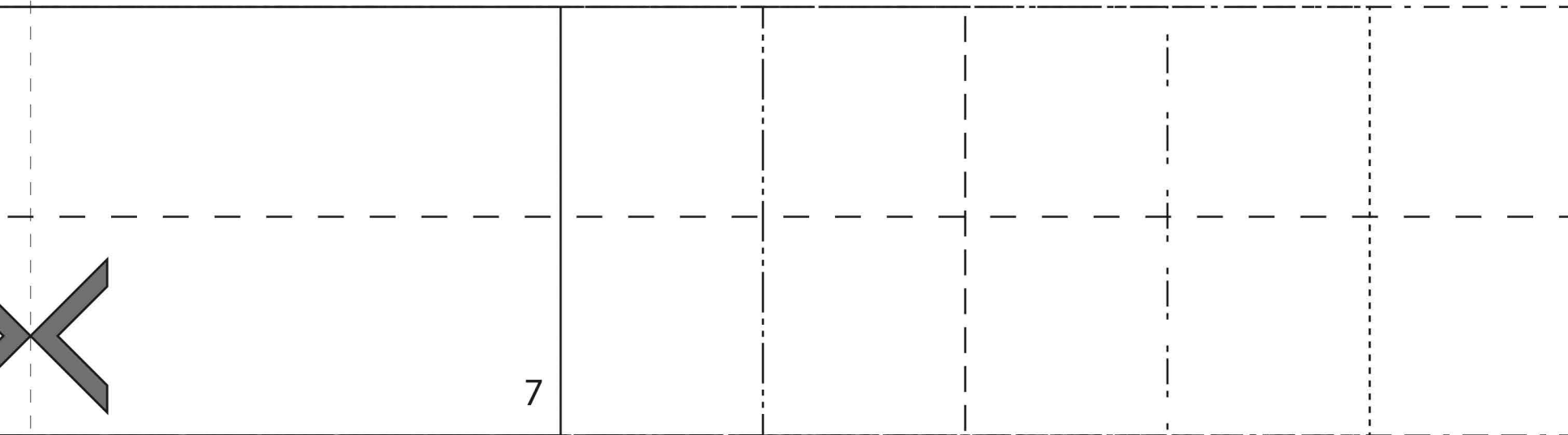
front waistband
vorderer Bund
cut 2 / 2x

© by Black Snail Patterns

grainline
Fadenlauf

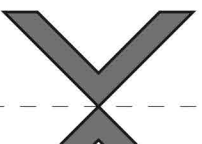
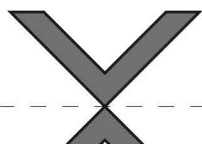
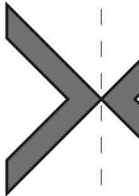


18



19

4
buttonhole facing until here
Knopflochbeleg bis hierher

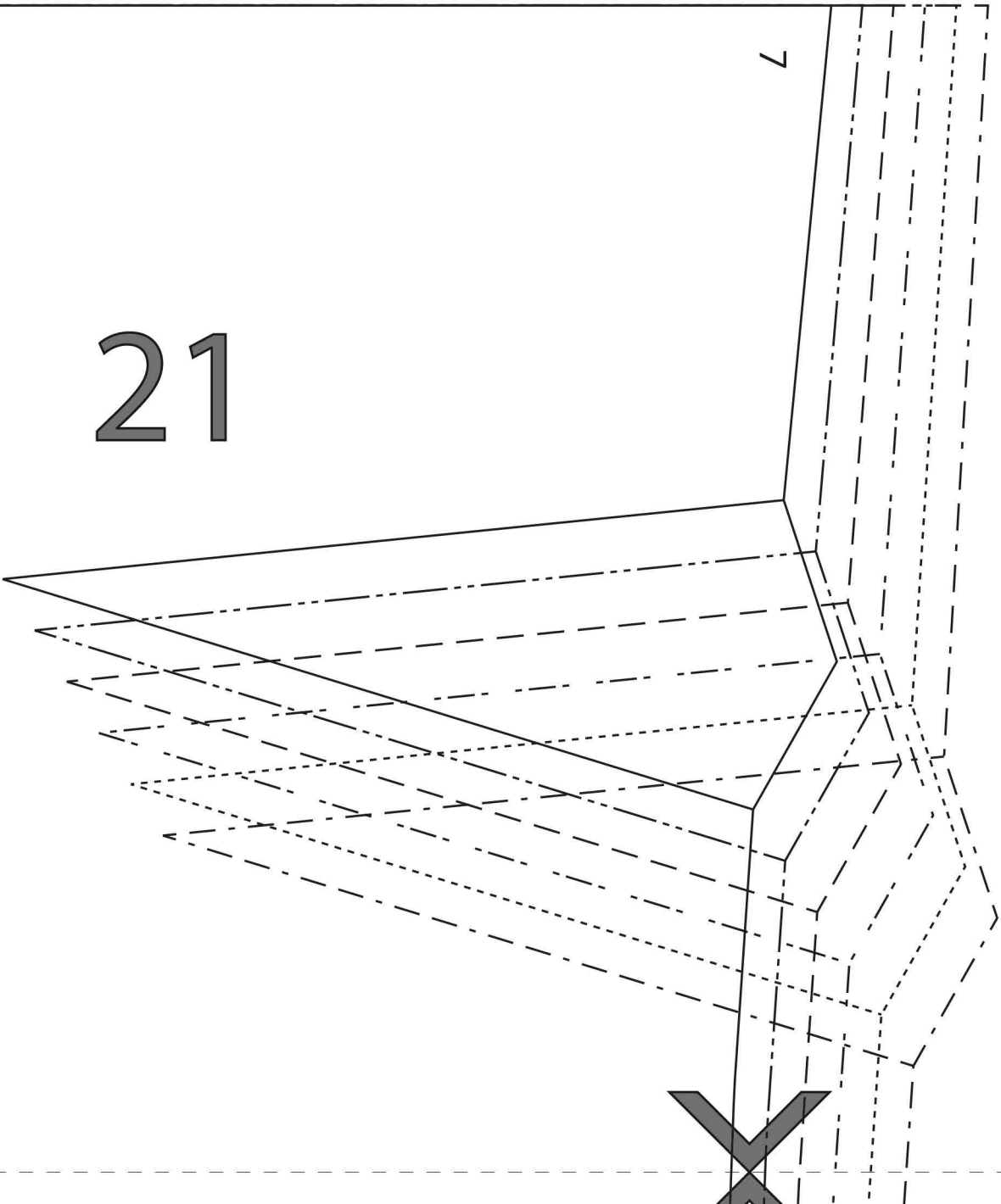


gra
Fac

20

#0815 Fahr
Size 20-30 /
1
front / Vord
cut 2 / 2x
© by Black S

grainline
Fadenlauf



7

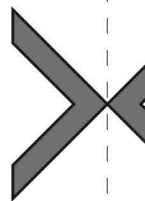
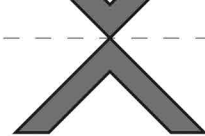
21

3

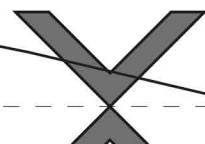
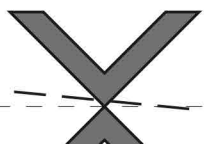
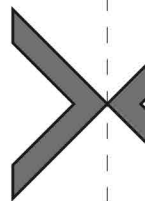
30/56

buttonhole facing until here
Knopflochbeleg bis hierher

20/46



22



urad Bloomers

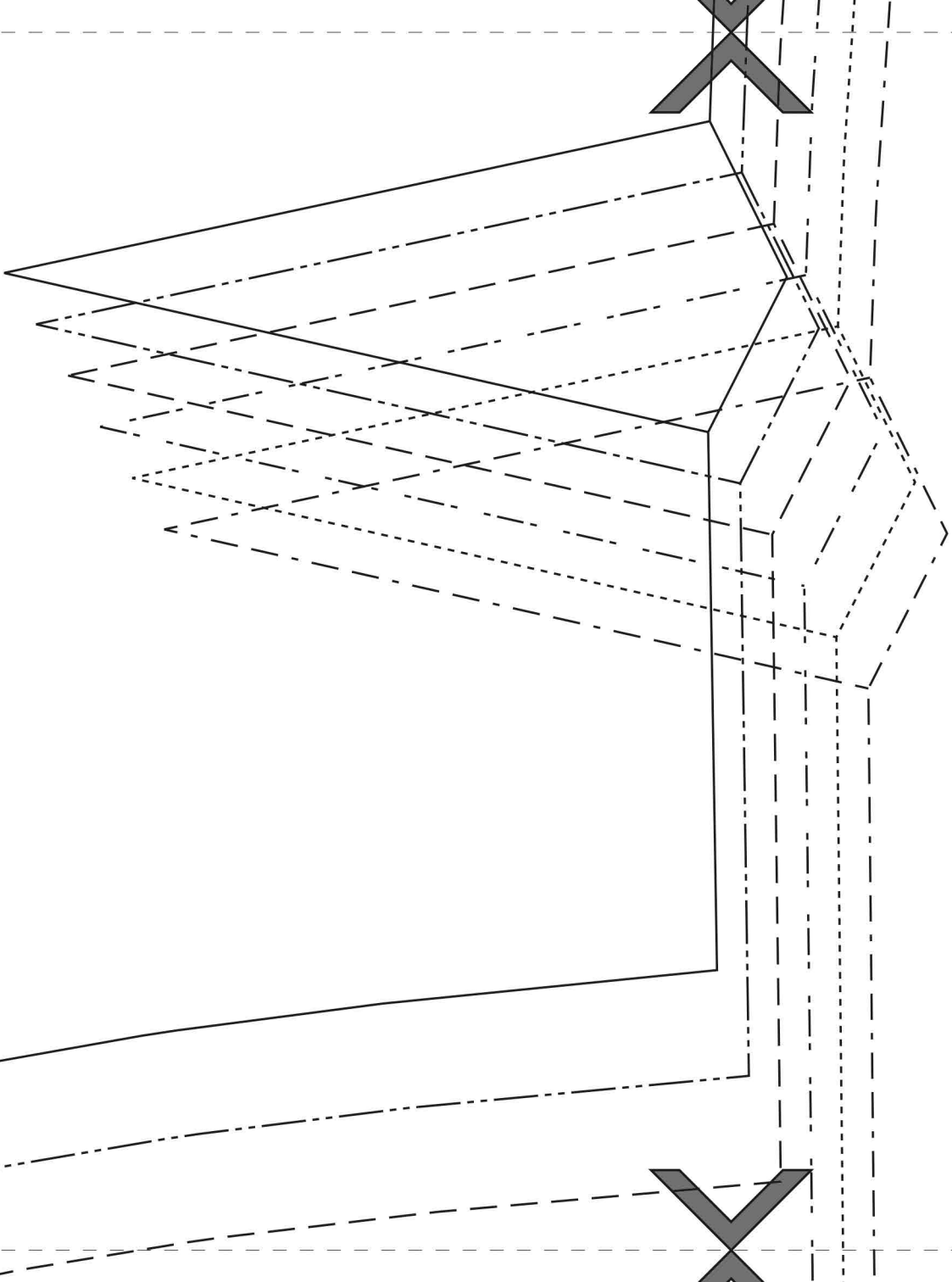
0 / Grösse 46-56

rderteil

k Snail Patterns

23

24



10cm x10cm

3" x 3"

25

46 / 20

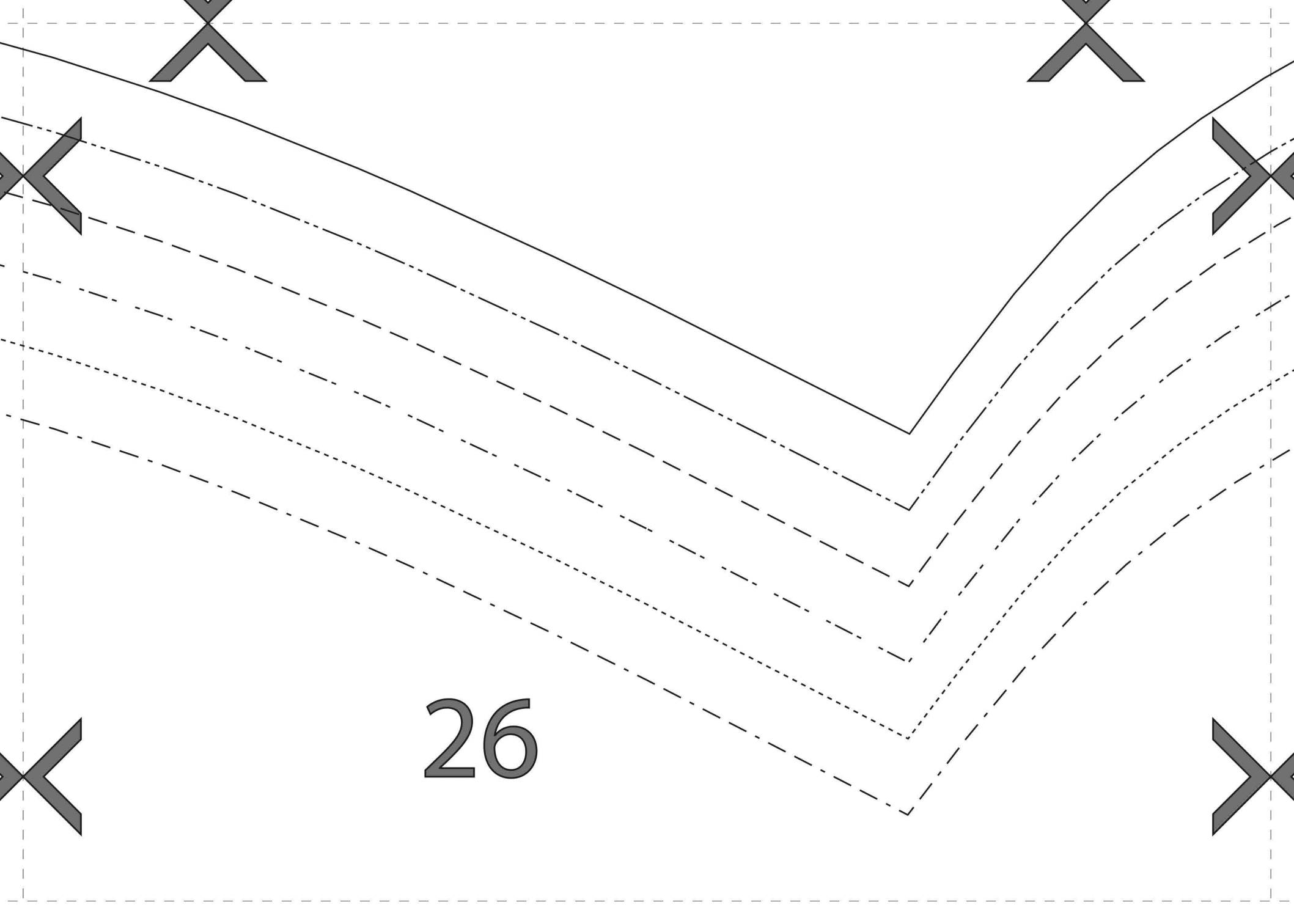
48 / 22

50 / 24

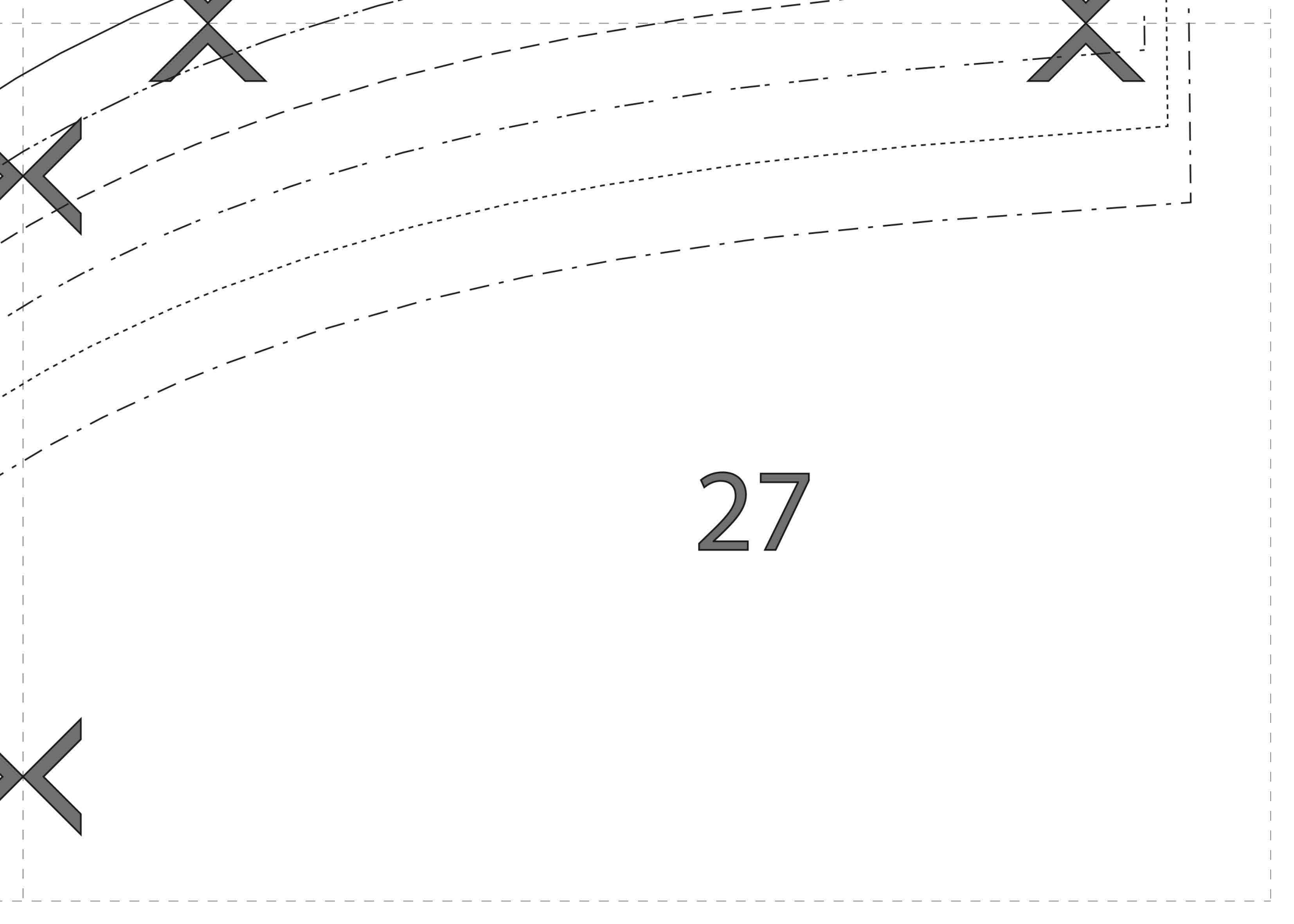
52 / 26

54 / 28

56 / 30



26



27