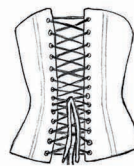




Black Snail Patterns

from past to present
by R. Kohlberger



Sewing Pattern #0815

Cycling Bloomers about 1900

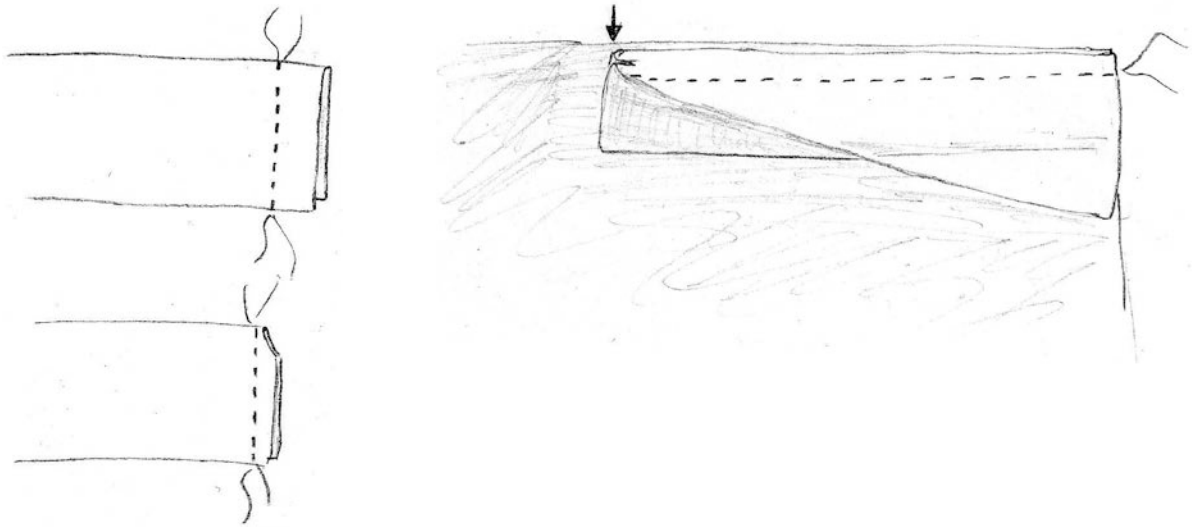
Size US 8-18 (EU 34-44)



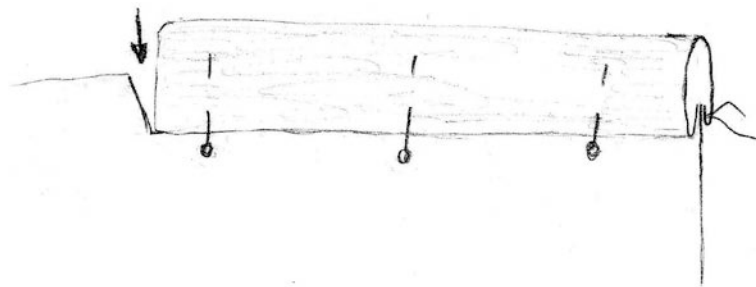
Sewing instructions

The bloomers have a closed crotch seam, they will be closed with buttons at the waistband. The knee straps are closed with buttons too.

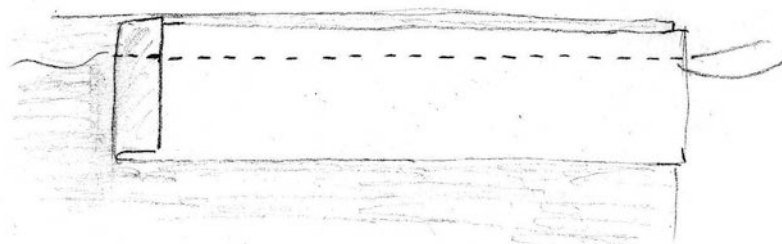
Prepare button stays: Fold straps for the button stays lengthwise, right sides together. Sew along one of the short edges. Trim seam allowance, turn inside out, press. Open the strap again and pin to the back trouser, just with one layer, sew. Clip seam allowance of back trouser at the end of the seam.



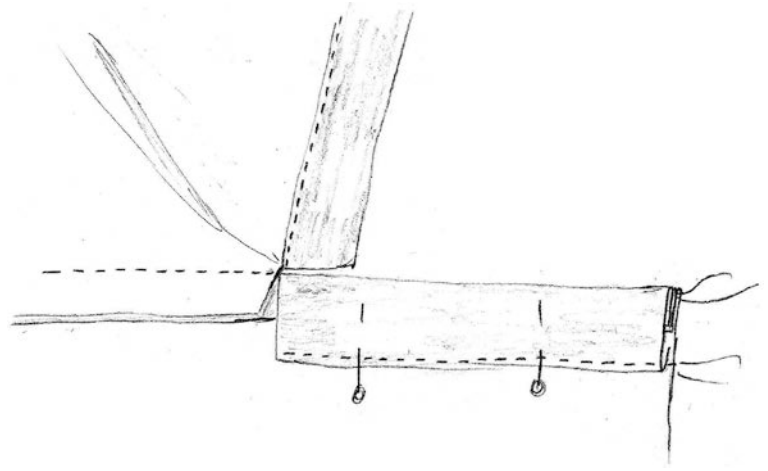
Fold inside the loose SM, fold button stay over the seam and pin to the trouser so that the edge will overlap the seam a little bit. Sew from the right side exactly along the seam.



Prepare straps for buttonhole facing: fold up seam allowance of the lower edge and sew to front trouser.



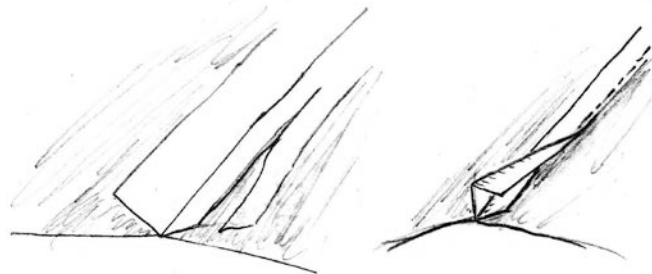
Close side seams respecting marks.
Fold in seam allowance of
buttonhole facing, fold over the
edge and stitch down.



Perform the side seam as a flat felled seam. Trim back seam allowance of the front
trouser, fold over the seam allowance of the back trouser and stitch down. Line up

button stays
buttonhole
stitch together
the fly.

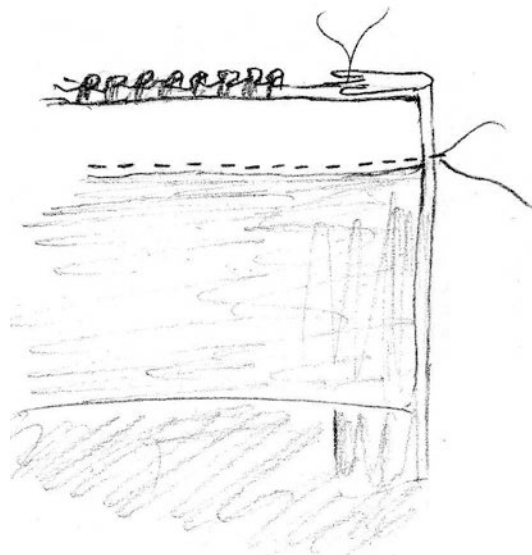
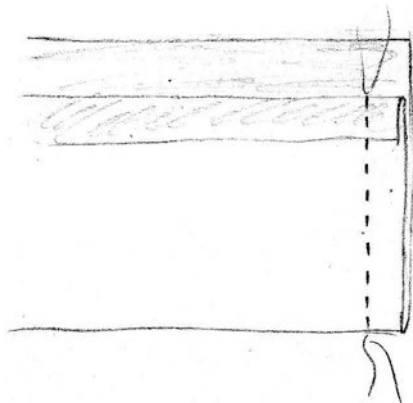
and
facing and
at the end of



Close inner seams of the bloomers. Sew seam either as a flat felled seam or as a
French seam.

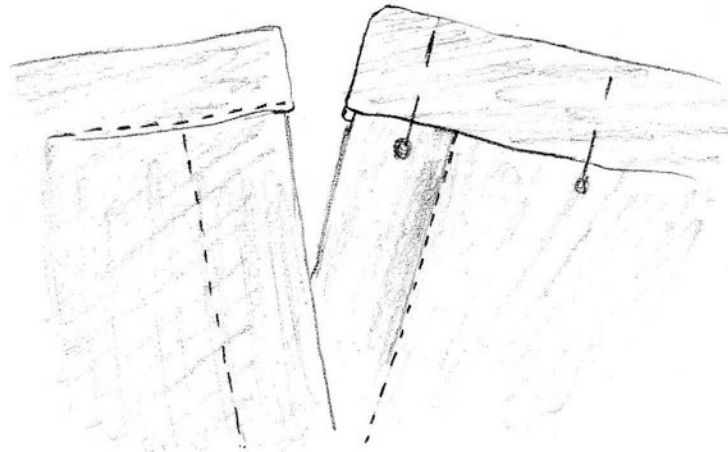
Sew with large stitches along the edge of the pant legs and gather.

Prepare knee straps. Fold pieces lengthwise, right sides together, sew along short
edges, fold in seam allowance of inner part while sewing. Turn inside out, press. Sew
knee strap to the pant legs, at the inside sew on straps by hand.

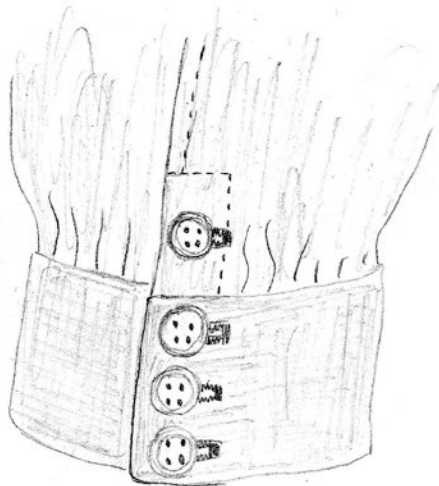


Close darts, close crotch seam, either as flat felled seam or as French seam.

Prepare waistband: Fold in seam allowances and press, fold straps lengthwise, right sides together, sew along short edges. Turn inside out. Pin waistband to the trousers, fold all darts towards center back, sew through all layers.



Mark position of buttonholes and sew, sew on buttons.



Size Chart misses

General information for historical patterns:

For all historical patterns which would be worn over a Corset, waist circumference is reduced, according to the next smaller size. For Example you wear a size 14 with a bust measurement of 36" and a natural waist of 31" a waist reduction about 2" is already considered.

Please always do a mock-up first.

| | | | | | | | | | | | | |
|--------------------------|------|------|------|------|------|------|------|------|------|------|------|------|
| EUR | 34 | 36 | 38 | 40 | 42 | 44 | 46 | 48 | 50 | 52 | 54 | 56 |
| US | 8 | 10 | 12 | 14 | 16 | 18 | 20 | 22 | 24 | 26 | 28 | 30 |
| | | | | | | | | | | | | |
| Body height | | | | | 66 | | | | | | | |
| Bust | 31,5 | 33 | 34,5 | 36 | 38 | 39,5 | 41 | 43,5 | 45,5 | 48 | 50,5 | 53 |
| Waist | 26 | 27,5 | 29 | 30,5 | 32 | 34 | 35,5 | 38 | 40 | 42,5 | 45 | 47 |
| Hip | 37 | 38 | 39 | 40,5 | 42 | 43 | 45 | 47 | 49 | 51 | 53 | 55 |
| Back length | 16,5 | 16,5 | 16,5 | 16,5 | 16,5 | 16,5 | 17 | 17 | 17 | 17 | 17 | 17 |
| Arm length | 23 | 23 | 23,5 | 23,5 | 23,5 | 24 | 24 | 24 | 24,5 | 24,5 | 24,5 | 24,5 |
| Upper arm circumf. | 10 | 10,5 | 11 | 11,5 | 12 | 12 | 12,5 | 13,5 | 14 | 15 | 16 | 16,5 |
| Back width | 6 | 6 | 6,5 | 6,5 | 7 | 7 | 7,5 | 7,5 | 8 | 8 | 8,5 | 8,5 |
| Neck circumference | 13,5 | 14 | 14 | 15,5 | 15,5 | 15 | 15 | 15,5 | 16 | 16,5 | 17 | 17,5 |
| all measurements in inch | | | | | | | | | | | | |

| | | | | | | | | | | | | |
|------------------------|------|------|------|------|------|------|------|------|------|------|------|------|
| EUR | 34 | 36 | 38 | 40 | 42 | 44 | 46 | 48 | 50 | 52 | 54 | 56 |
| US | 8 | 10 | 12 | 14 | 16 | 18 | 20 | 22 | 24 | 26 | 28 | 30 |
| | | | | | | | | | | | | |
| Body height | | | | | 168 | | | | | | | |
| Bust | 80 | 84 | 88 | 92 | 96 | 100 | 104 | 110 | 116 | 122 | 128 | 134 |
| Waist | 66 | 70 | 74 | 78 | 82 | 86 | 90 | 96 | 102 | 108 | 114 | 120 |
| Hip | 94 | 97 | 100 | 103 | 106 | 109 | 114 | 119 | 124 | 129 | 134 | 139 |
| Back length | 41,4 | 41,4 | 41,6 | 41,8 | 42 | 42,2 | 42,4 | 42,7 | 43 | 43,3 | 43,6 | 43,6 |
| Arm length | 59,3 | 59,6 | 59,9 | 60,2 | 60,5 | 60,8 | 61,1 | 61,4 | 61,7 | 62 | 62 | 62 |
| Upper arm circumf. | 26 | 27 | 28 | 29 | 30 | 31 | 32 | 34 | 36 | 38 | 40 | 42 |
| Back width | 15,5 | 16 | 16,5 | 17 | 17,5 | 18 | 18,5 | 19,2 | 19,9 | 20,6 | 21,3 | 22 |
| Neck circumference | 34,6 | 35,2 | 35,8 | 36,4 | 37 | 37,6 | 38,2 | 39,4 | 40,6 | 41,8 | 43 | 44,2 |
| all measurements in cm | | | | | | | | | | | | |

#0815 Cycling Bloomers 1900 size US 8-18 (EU 34-44)

Recommended fabric: cotton or linen fabric

Fabric required: 1.8yds. with a width of 51" (170cm with a width of 130cm)

5/8" seam allowance included

1,5 cm seam allowance included

Pieces:

#1 front: cut 2

#2 back: cut 2

#3 button stay waist: cut 2

#4 buttonhole facing waist: cut 2

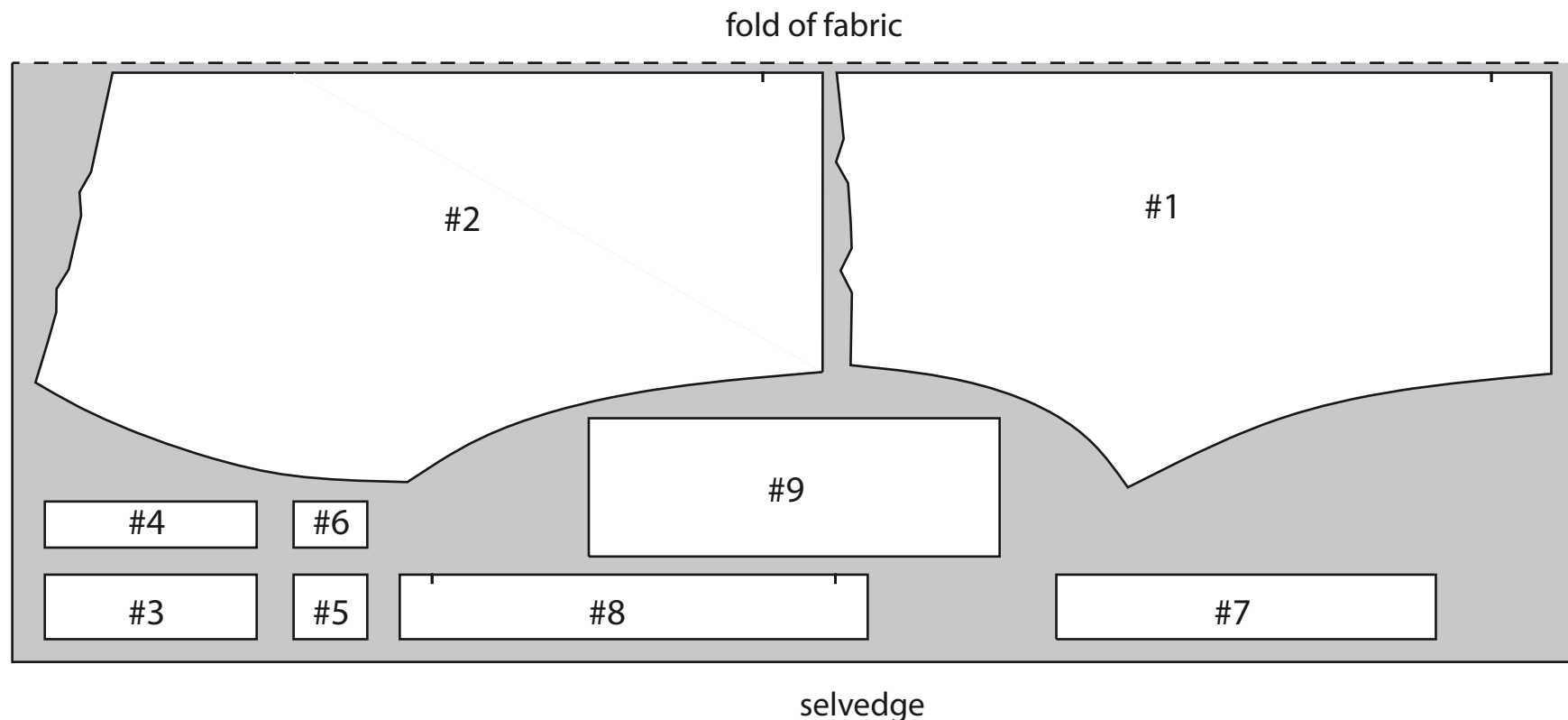
#5 button stay knee: cut 2

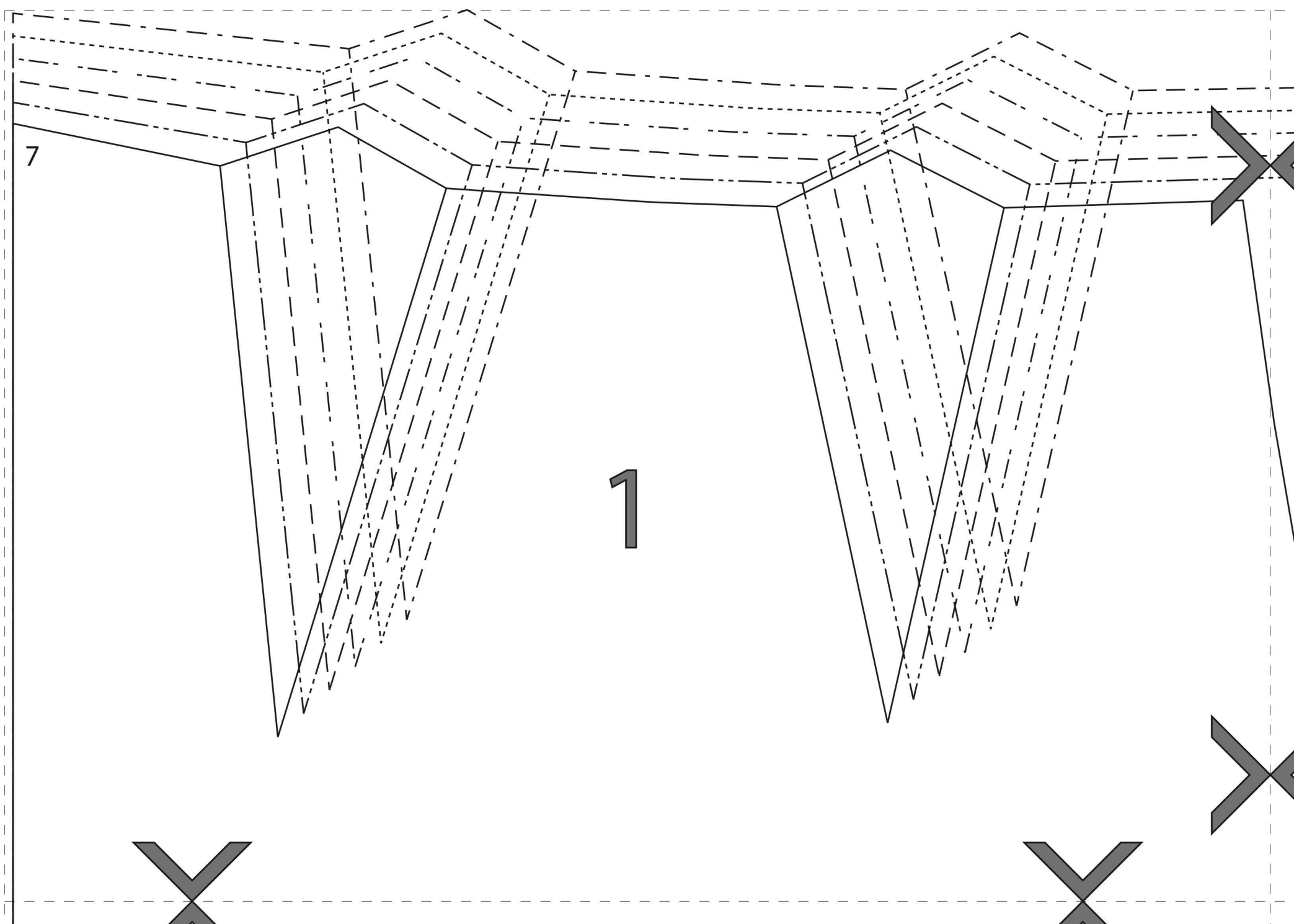
#6 button hole facing knee: cut 2

#7 front waistband cut 1

#8 back waistband cut 1

#9 knee straps: cut 2







#0815 Cycling Bloomers

The diagram on the left shows a pattern for cycling bloomers. It includes a solid line for the main body, a dashed line for the waistband, and a dotted line for the leg openings. There are four 'X' marks indicating where to cut: one at the top left corner, one at the top right corner, one at the bottom left corner, and one at the bottom right corner.

#0815 Fahrrad Bloomers

Size 8-18 / Grösse 34-44

9

knee straps

Kniebund

cut 2 / 2x

© by Black Snail Patterns

2

mers
mers
4-44

grainline
Fadenlauf

terns

3

3 18/44

buttonhole facing until here
Knopflochbeleg bis hierher

8/34

4

#0815 Cycling Bloomers

#0815 Fahrrad Bloomers

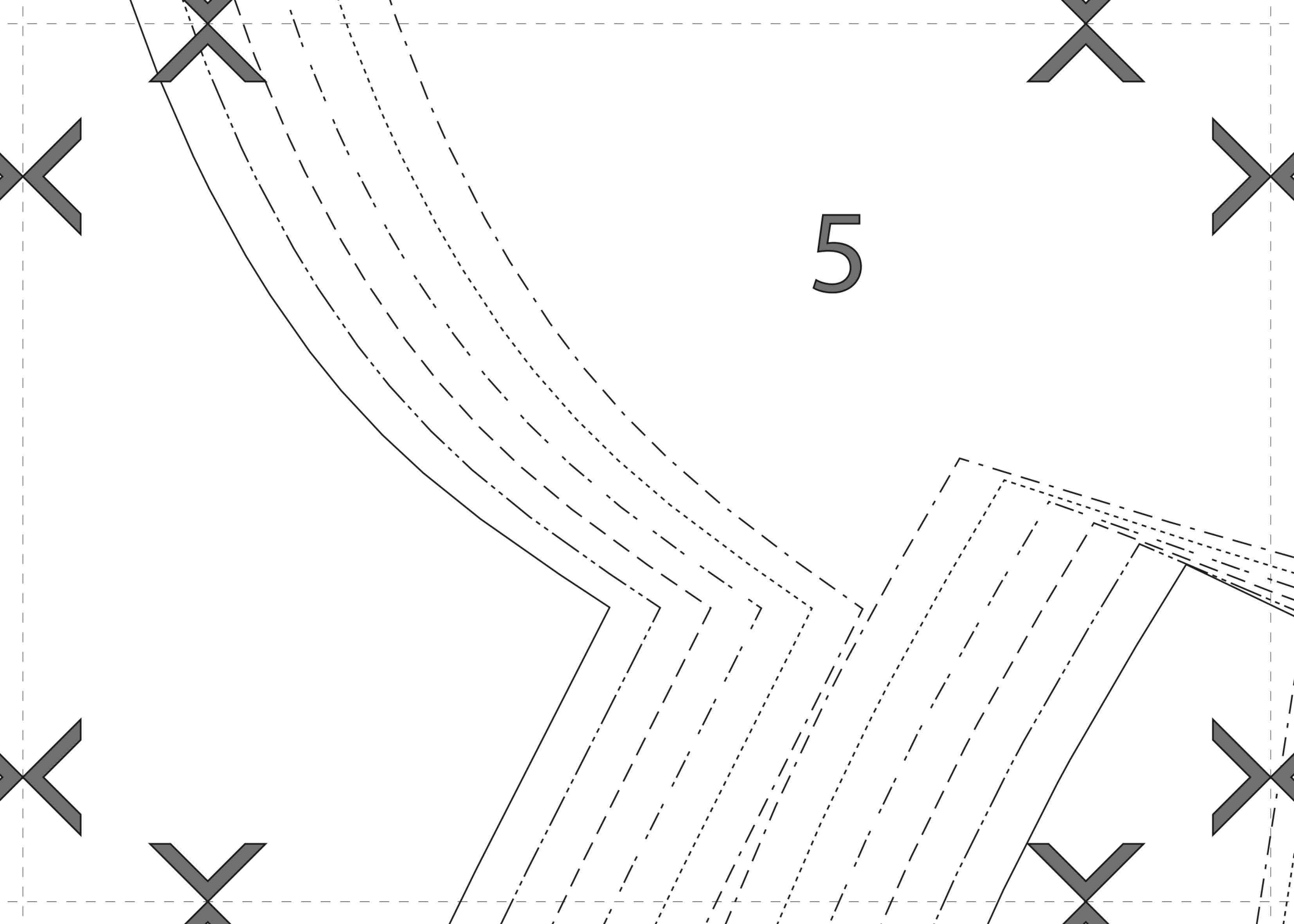
Size 8-18 / Grösse 34-44

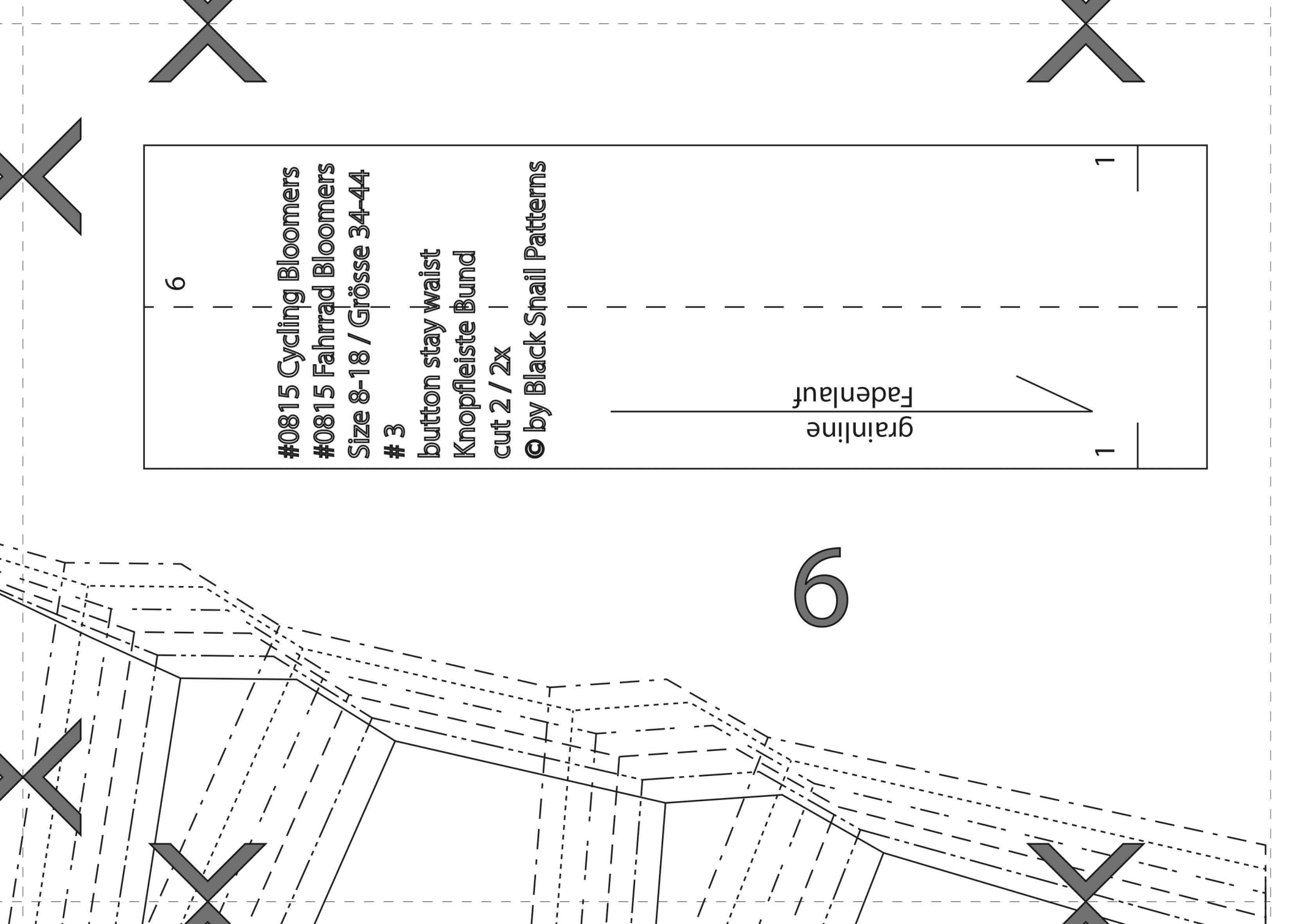
1

front / Vorderteil

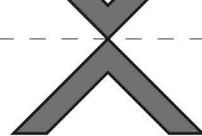
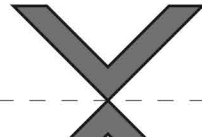
cut 2 / 2x

© by Black Snail Patterns





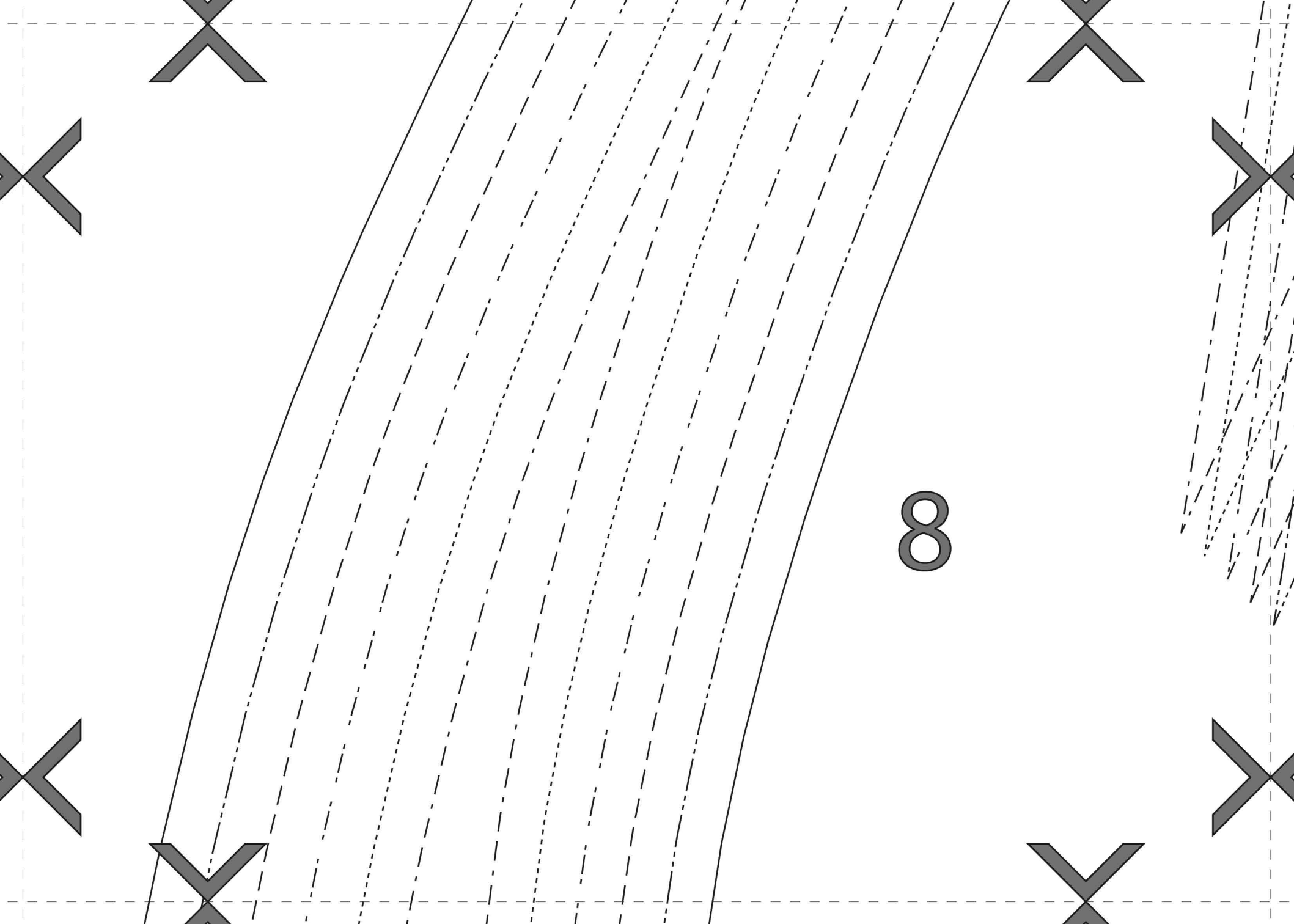
| | |
|---|---|
| 6 | <p>#0815 Cycling Bloomers #0815 Fahrrad Bloomers Size 8-18 / Grösse 34-44 # 3 button stay waist Knopfleiste Bund cut 2 / 2x © by Black Snail Patterns</p> <p>grainline Fadenlauf</p> <p>1 1</p> |
|---|---|

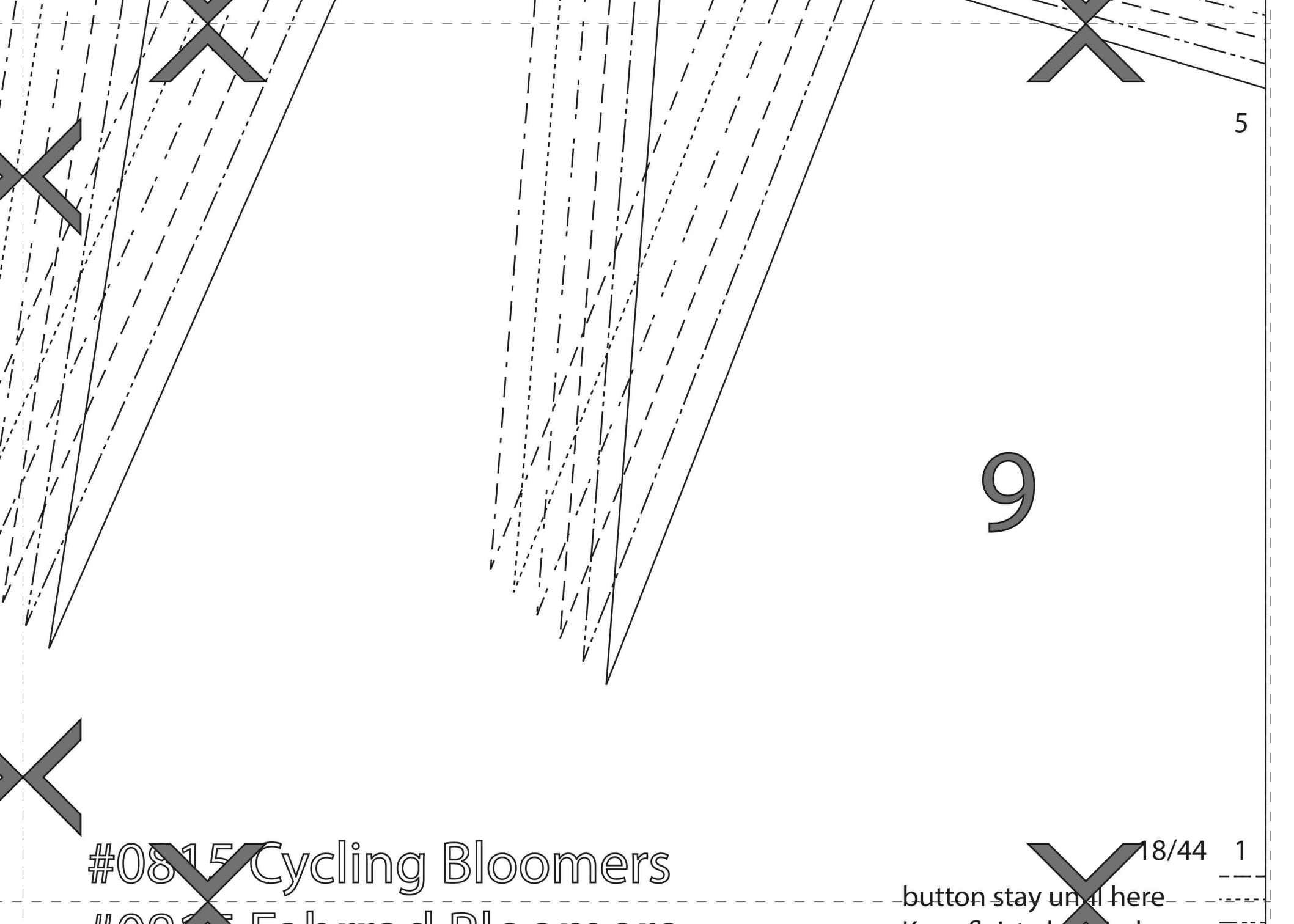


7

grainline
Fadenlauf

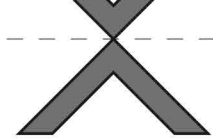




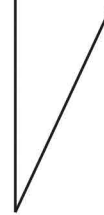


#0815 Cycling Bloomers

button stay until here 18/44 1

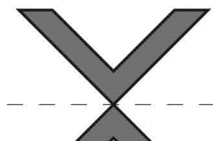
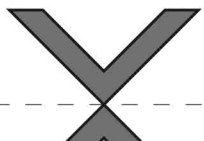


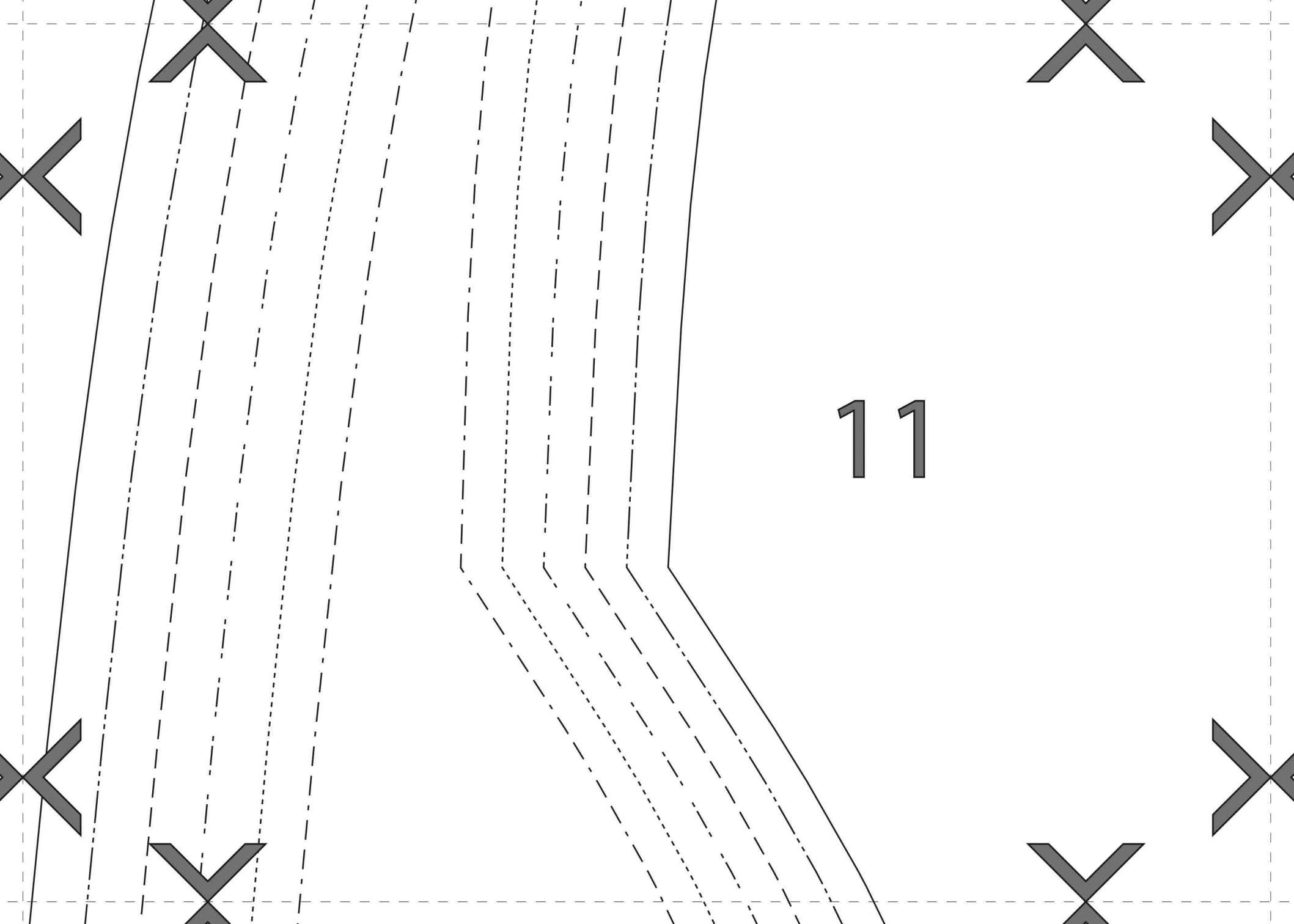
10



4

buttonhole facing until here
Knopflochbeleg bis hierher





~~Free Cycling Bloomers~~
#0815 Fahrrad Bloomers

Size 8-18 / Grösse 34-44

2

back / Rückteil

cut 2 / 2x

© by Black Snail Patterns

~~button stay until here~~
~~Knopfleiste bis hierher~~

8/34

12

#0815 Cycling Bloomers
#0815 Fahrrad Bloomers
Size 8-18 / Grösse 34-44
4

buttonhole facing waist
Knopfloch Blende Bund
cut 2 / 2x
© by Black Snail Patterns

grainline
Fadenlauf

3

13

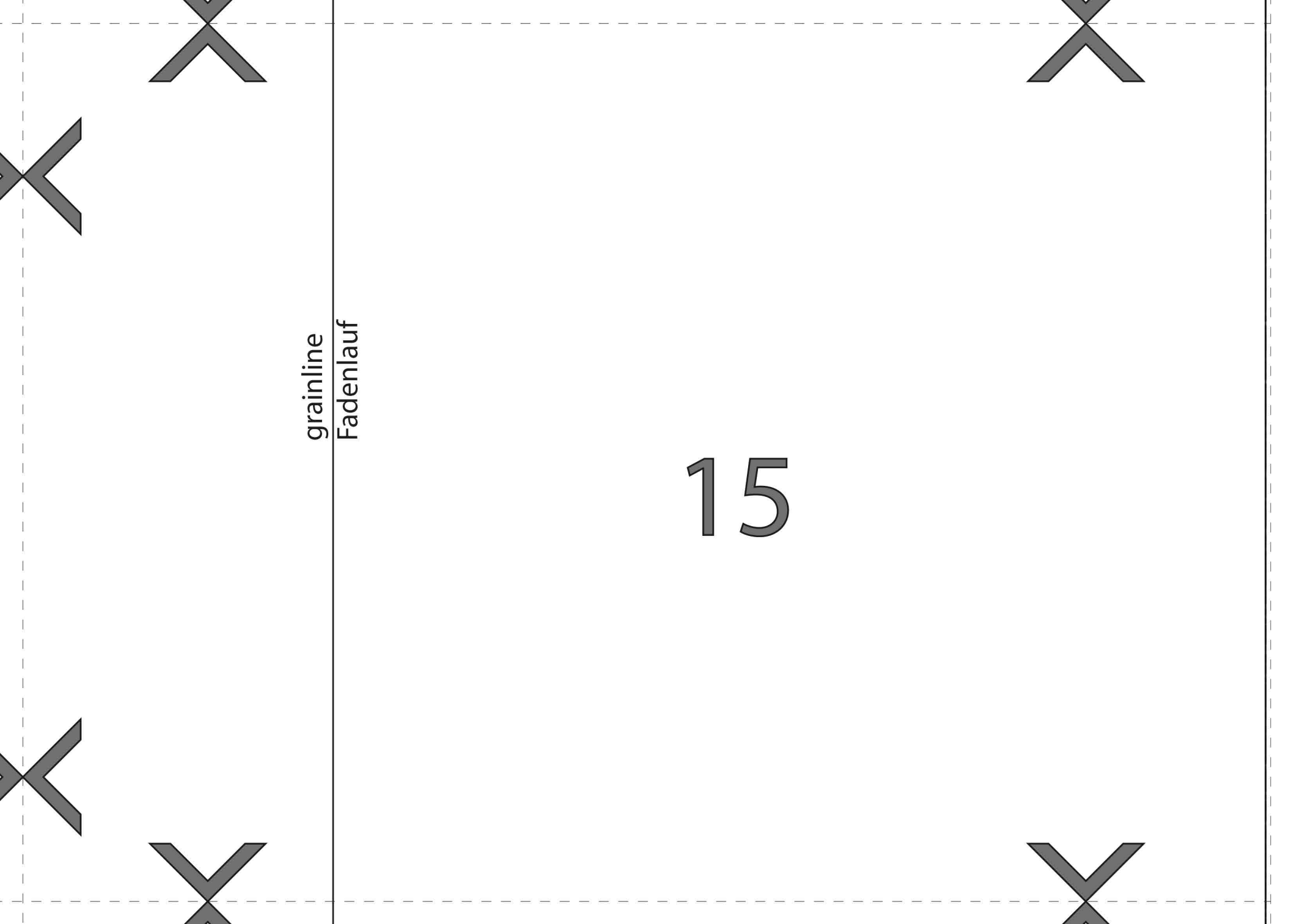
#0815 Cycling Bloomers
#0815 Fahrrad Bloomers
Size 8-18 / Grösse 34-44
5
button stay knee
Knopfleiste Knie
cut 2 / 2x
© by Black Snail Patterns

grainline
Fadenlauf

2

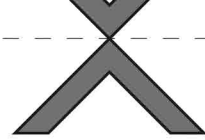
2

14



grainline
Fadenlauf

15



16



10cm x 10cm

3" x 3"

34 / 8

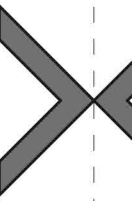
36 / 10

38 / 12

40 / 14

42 / 16

44 / 18



#0815 Cycling Bloomers
#0815 Fahrrad Bloomers
Size 8-18 / Grösse 34-44
6
buttonhole facing knee
Knopfloch Blende Knie
cut 2 / 2x
© by BlackSnail Patterns

4

grainline
Fadenlauf

17



18

button stay until here
Knopfleiste bis hierher

6

#0815 Cycling Bloomers

#0815 Fahrrad Bloomers

Size 8-18 / Grösse 34-44

8

back waistband

hinterer Bund

cut 2 / 2x

© by Black Snail Patterns

5

#0815 Cycling Bloomers

#0815 Fahrrad Bloomers

Size 8-18 / Grösse 34-44

7

front waistband

vorderer Bund

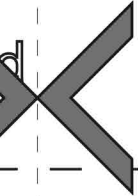
cut 2 / 2x

© by Black Snail Patterns

grainline

Faden

7



il Patterns

grainline
Fadenlauf

6

5

rainline
adenlauf

7

20

Diagram Bogen

