

1891 Fan-Skirt



1891 Fan-Skirt

The Fan-Skirt or Umbrella Skirt became fashionable in 1891. The pattern is suitable as well for day dress as for evening dress with a train.

Around the hips the skirt is fitted with darts, at the back it has deep pleats, below the skirt becomes full to keep the balance with the gigot sleeves.

Apart from the rich decorated waists, the skirts were kept simply.

Fabric required is about 3.8 to 4.3 yards (3,5 to 4 meters) with a width of 55" (140cm). A width of 55" is necessary for this pattern.

The skirt is to be worn over a corset, a reduction of the waist about 1 ½" (4cm) is already considered. That means with a natural waist measurement of 31" (78cm), corresponding size US 14, EUR 40, the finished skirt will have a waist measurement of 29" (74cm).

EUR	34	36	38	40	42	44	46	48	50	52
US	8	10	12	14	16	18	20	22	24	26
Body height					66					
Bust	31,5	32,5	34	36	38	40	42	44	46	48
Waist	26	27,5	29	31	32	34	35,5	38	40	24,5
Hip	37	38	39	40,5	42	43	45	47	49	51
all measurements in inch										

EUR	34	36	38	40	42	44	46	48	50	52
US	8	10	12	14	16	18	20	22	24	26
Body height					168					
Bust	80	84	88	92	96	100	104	110	116	122
Waist	66	70	74	78	82	86	90	96	102	108
Hip	94	97	100	103	106	109	114	119	124	129
Back length	41,4	41,4	41,6	41,8	42	42,2	42,4	42,7	43	43,3
Arm length	59,3	59,6	59,9	60,2	60,5	60,8	61,1	61,4	61,7	62
Upper arm	26	27	28	29	30	31	32	34	36	38
Back width	15,5	16	16,5	17	17,5	18	18,5	19,2	19,9	20,6
Neck circumference	34,6	35,2	35,8	36,4	37	37,6	38,2	39,4	40,6	41,8
Front length	43,6	44,2	44,8	45,4	46	46,6	47,2	48,3	49,4	50,5
all measurements in cm										

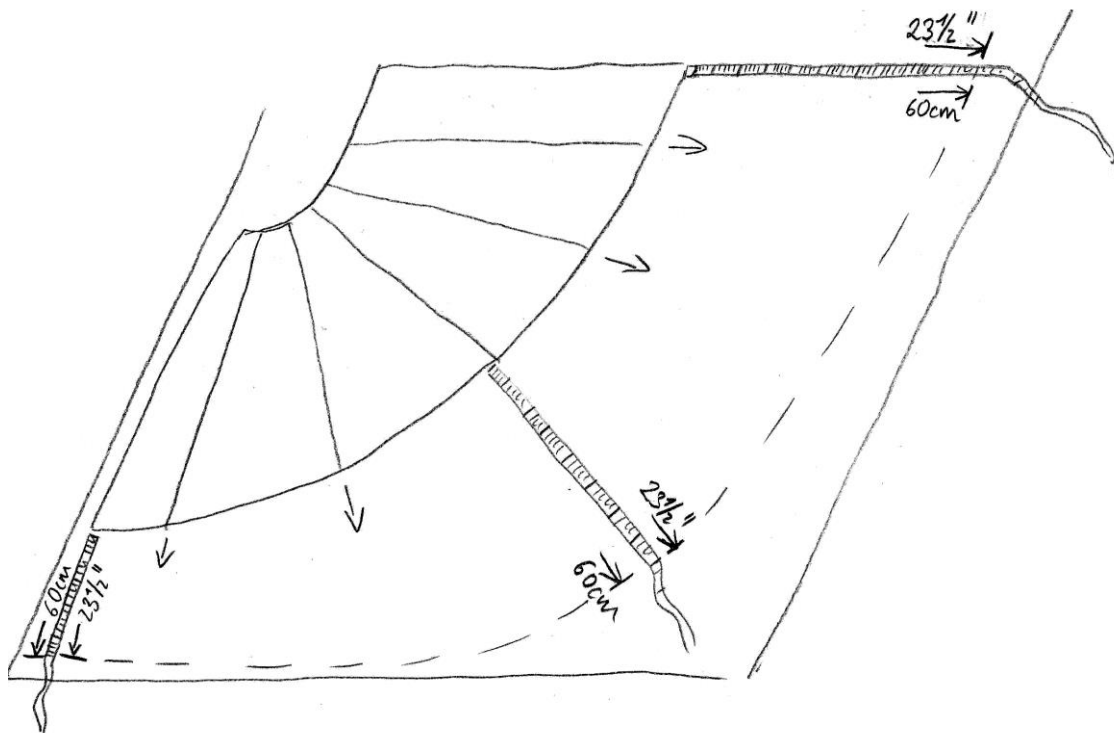
Seam allowance included ½" (1,5cm), hem 1 ¼" (3cm) included.

First considerations

Do I want a pocket or not?

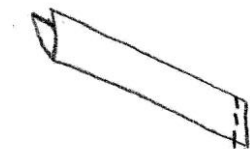
Where do I want to close the skirt? There are two possibilities, at the side seam or the centre back. When you want to close the skirt at the side seam you can cut the back part on fold of fabric, please note $\frac{1}{2}$ " (1,5cm) seam allowance at the centre back. If you want to close at the centre back it is better to cut the back parts separately.

To save time and money sticking lots of sheets together, the pattern of the back part comes shortened. Lay the pattern directly on the fabric and lengthen $23\frac{1}{2}$ " (60cm) with a ruler or a measuring tape as shown below. The length of the finished skirt will be 39" (100cm).



Prepare back parts:

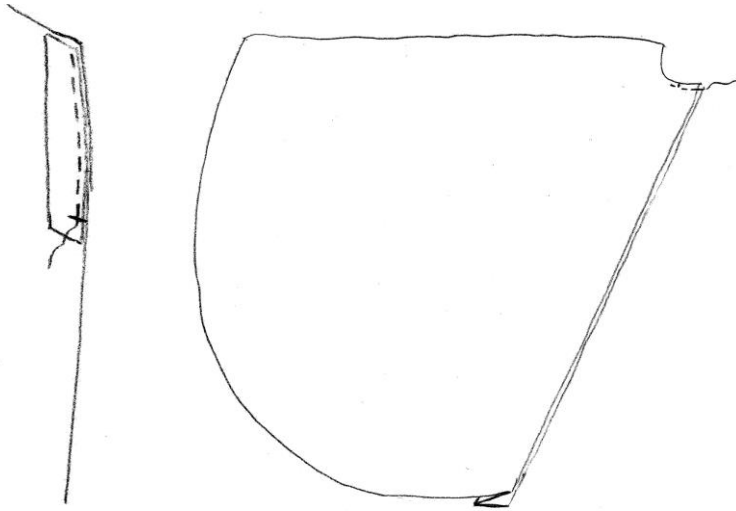
First prepare the placket. Fold in the middle, right sides together, sew one of the narrow edges, cut back seam allowance, turn inside out and iron.



If you prefer to close the skirt at the centre back sew the placket to right side of left skirt back part, end at the marking. Then close centre back, end exactly at the marking, pulling the placket to the side. Be careful not catching the placket.

Turn in the seam allowance at the right side, iron and fix either with invisible hand stitches or machine stitches.

Mark pleats at the centre back, fold an iron. Baste at the upper edge.

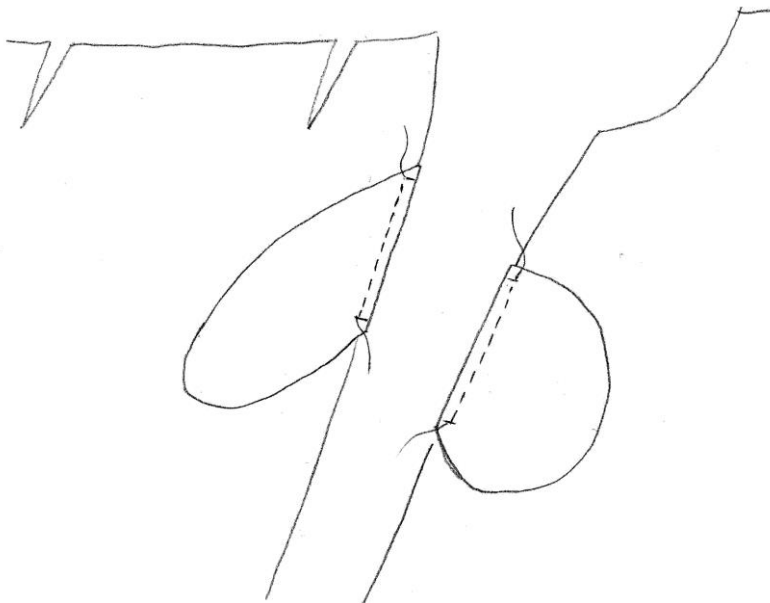


Pocket:

Close darts in front piece.

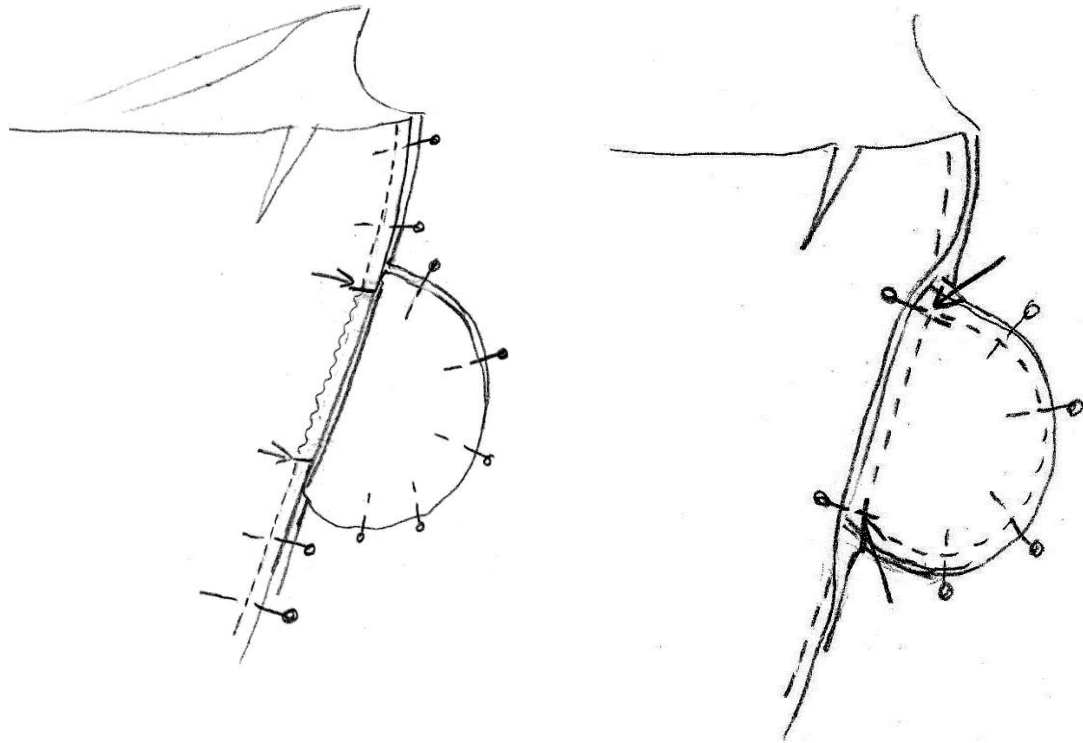
If you use a very stiff and heavy fabric for the skirt cut out the pocket pouches from a soft cloth. Otherwise you would see them later from the right side.

Transfer markings exactly. Stitch plackets to right side of front and back part. End exactly at markings.



Turn pocket pouches over seam line and pin together front and back part exactly. Stitch side seam, end at the markings (arrows). Don't stitch along waved line.

Next turn seam allowances towards skirt parts and stitch pocket pouches together. End exactly at markings (arrows).



Close remaining seams.

Waistband:

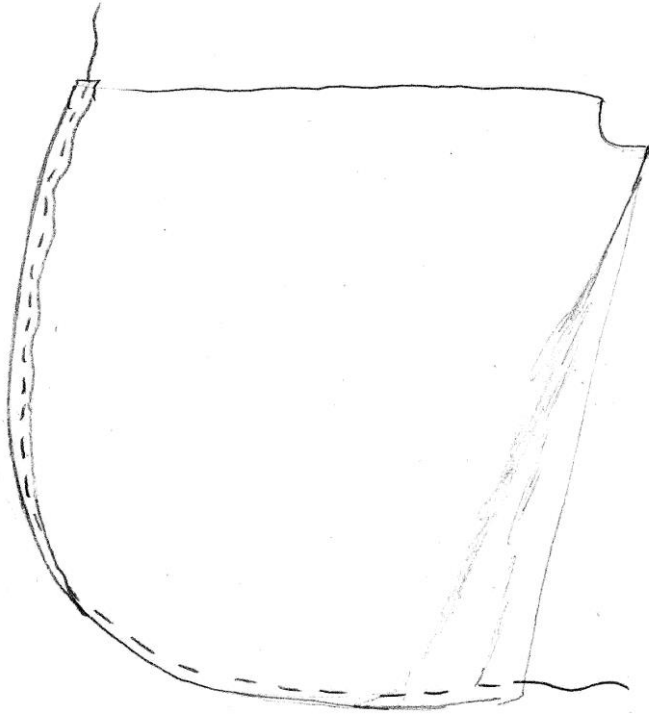
Reinforce outer part with interlining. Pin the two parts of waistband with right sides together. Stitch at upper edge and narrow sides. Cut back seam allowances, turn inside out and iron.

Sew Waistband to skirt, right sides together. On inside part of waistband turn in seam allowance and sew by hand.

Pointed waistband: Just cut outer waistband with point. Reinforce outer waistband (without seam allowance). Sew inner waistband to skirt, fix outer waistband with invisible stitches.

Seam:

Sew along hem with gathering stitches, turn in the hem and iron in the excess fabric width. Sew the hem with invisible stitches by hand. Optional trim the hem with a braid.



Sew on hooks and eyes.

Fanskirt 1890 size 34-44

Recommended fabric: middleweight woven fabric

Fabric required: 4 yd. 55" wide / 350cm with a width of 140cm

Interlining, hooks and eyes

Pieces:

#1 front: cut 1 on fold of fabric

#2 back: cut 2

#3 waistband cut 2, cut 1 when sewn with pointed waistband

#4 pointed waistband: cut 1

#5 placket: cut 1

#6 pocket: cut 4 (optional lighter fabric)

1/2" seam allowance included, hem 1" included

1,5 cm seam allowance included, hem 3cm included

Rock 1890 Größe 34-44

Stoffempfehlung: festere Webstoffe

Stoffverbrauch: 350cm bei 140cm Breite

Einlage, Haken und Ösen

Teile:

#1 Vorderteil: 1x im Stoffbruch

#2 Rückteil: 2x

#3 Bund: 2x, wenn Bund mit Spitze nur 1x

#4 Bund mit Spitze: 1x

#5 Untertritt: 1x

#6 Taschen: 4x (eventuell leichteren Stoff verwenden)

1,5 cm Nahtzugabe enthalten, Saum 3cm enthalten

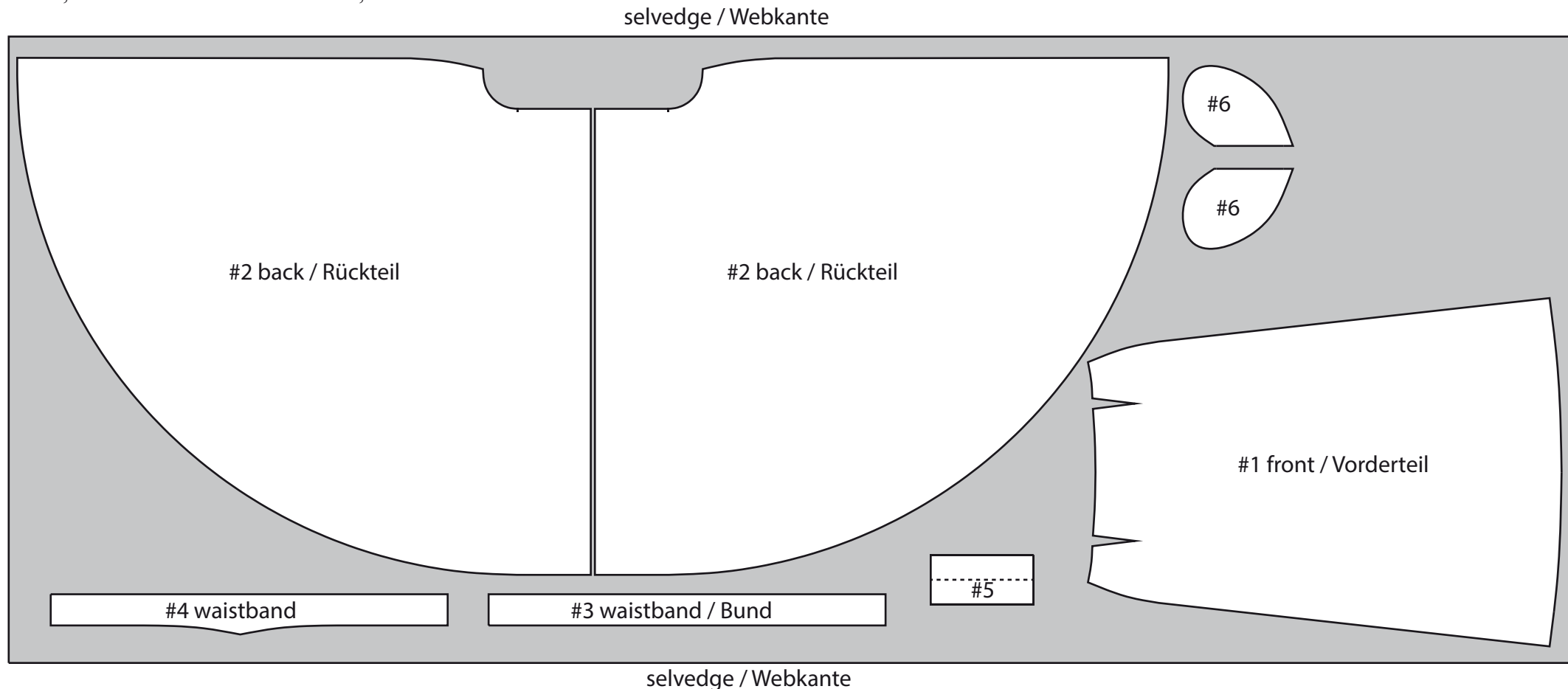


Diagram #1

Übersicht Bogen #1

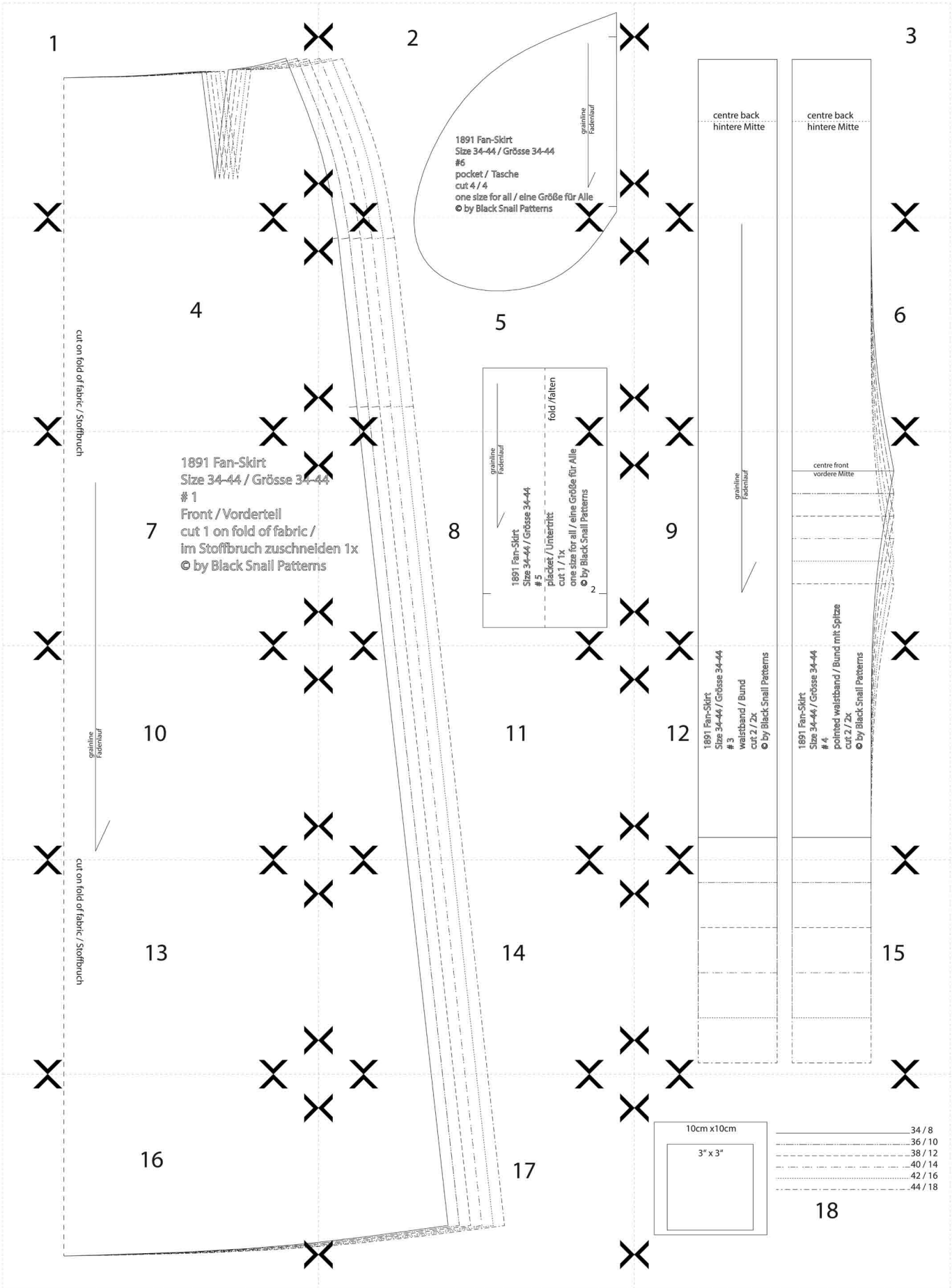
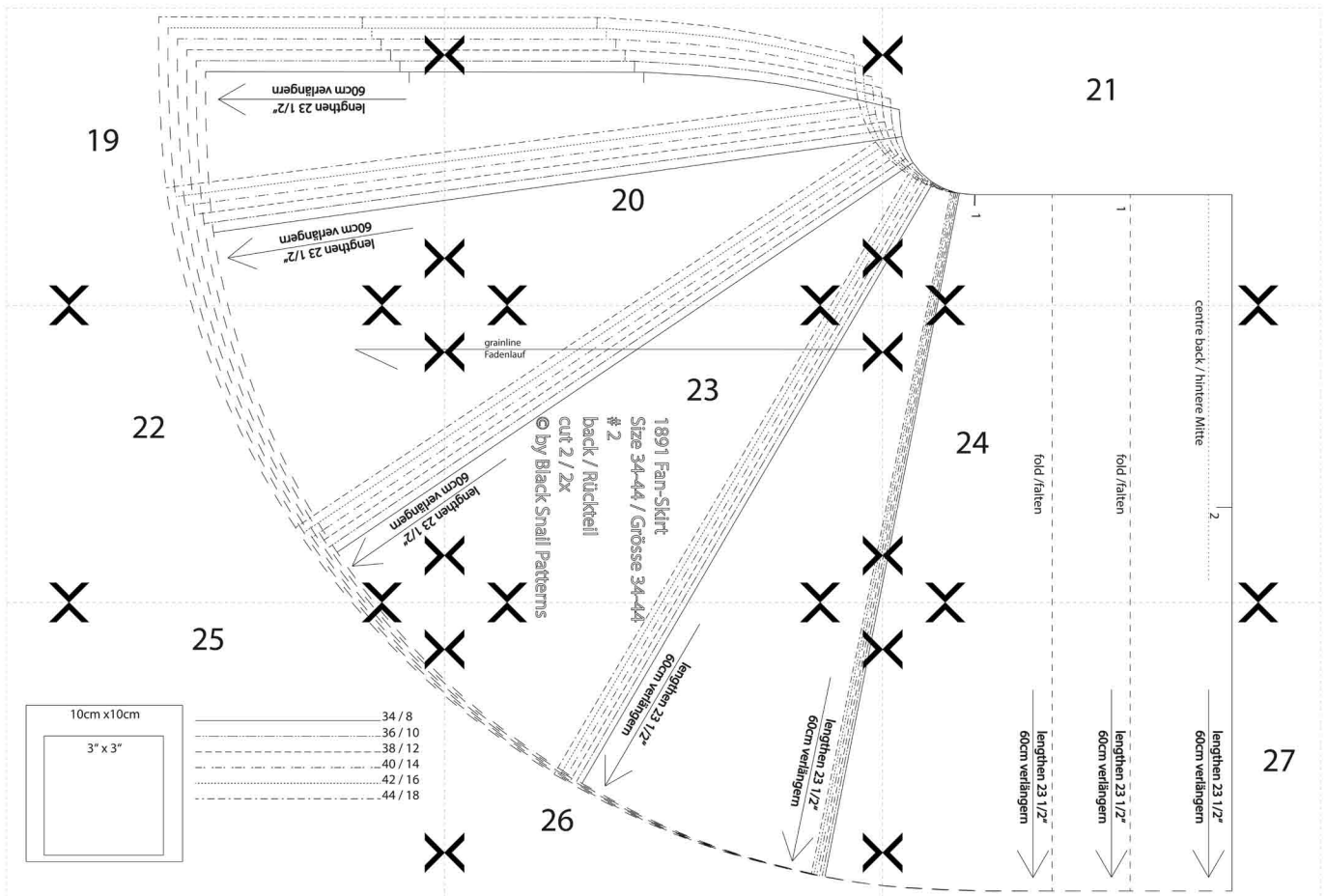
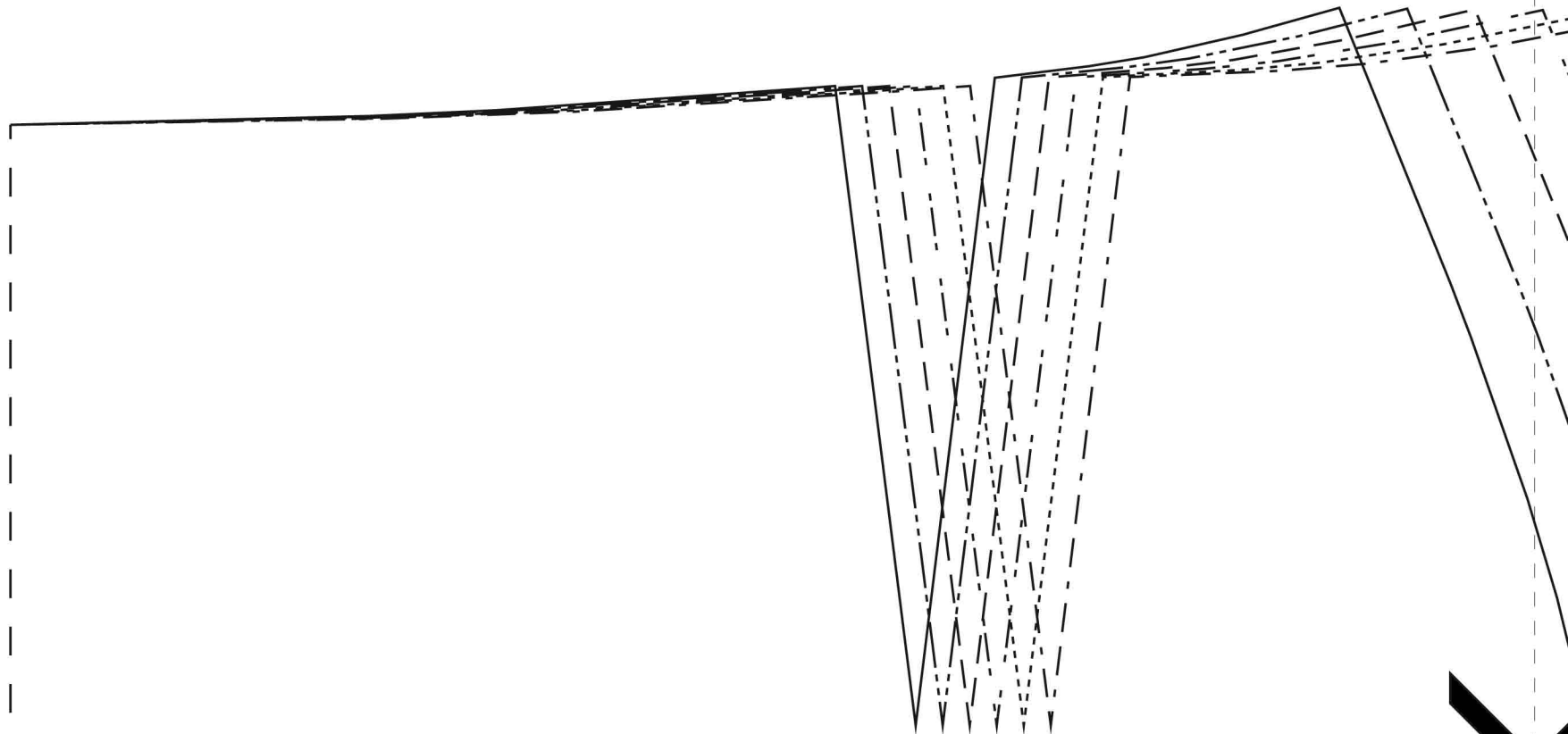
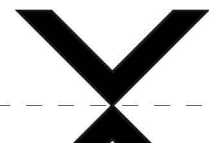
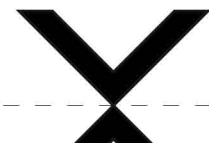


Diagram #2

Übersicht Bogen #2



1



2

1891 Fan-Skirt

Size 34-44 / Grösse 34-44

#6

pocket / Tasche

cut 4 / 4

one size for all / eine Grösse für Alle

© by Black Snail Patterns

grainline
Fadenlauf

3

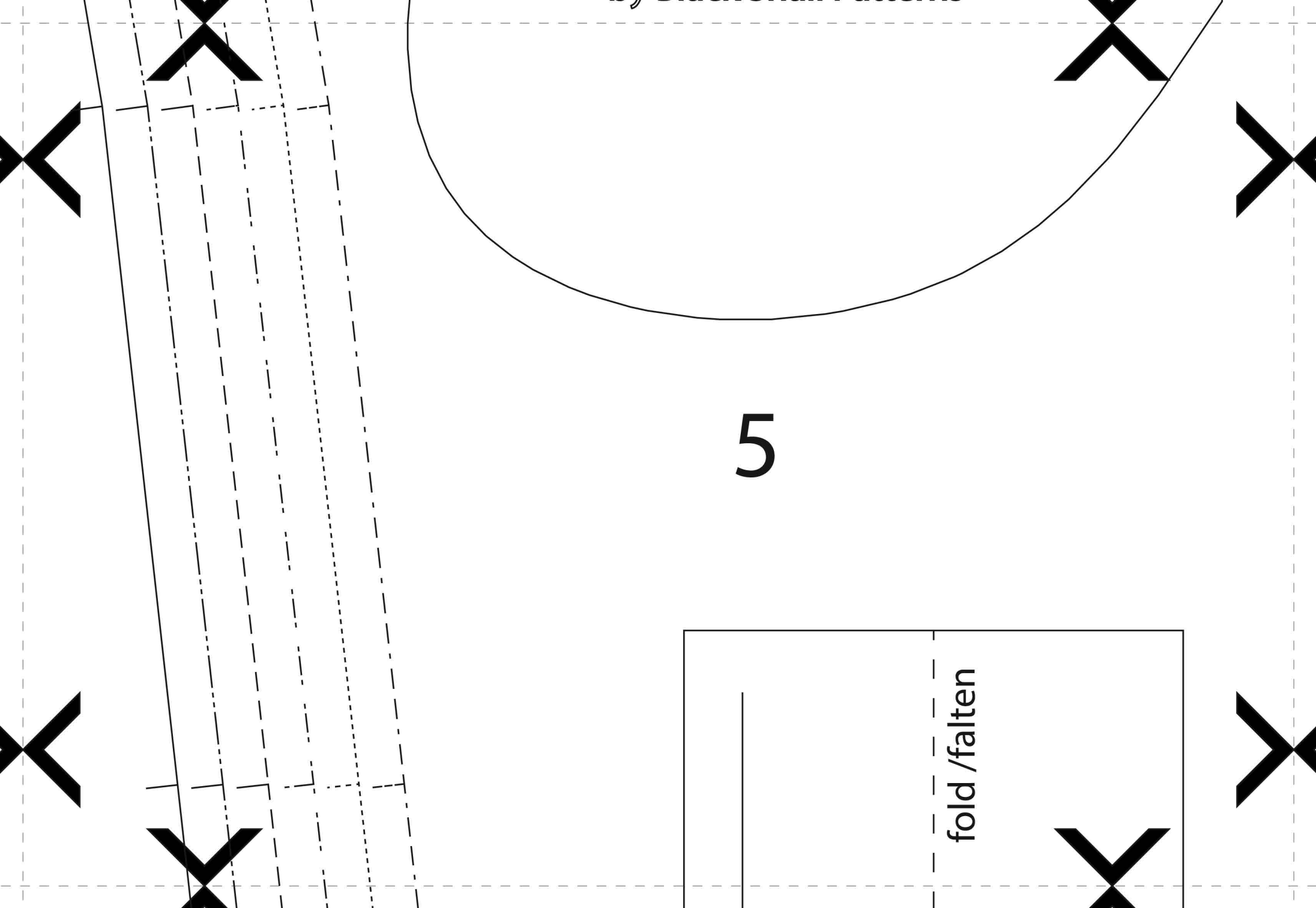
centre back
hintere Mitte

centre back
hintere Mitte

4

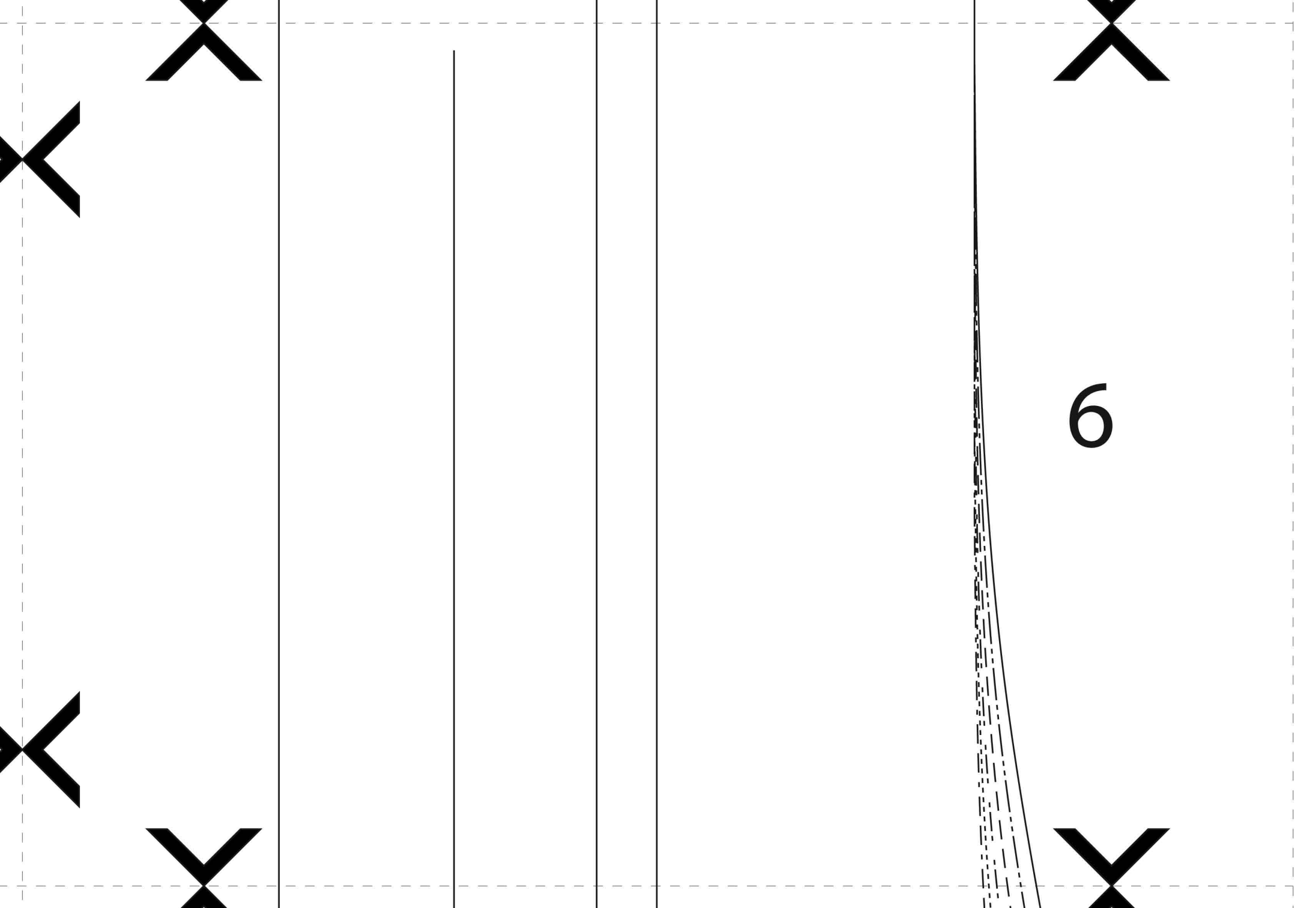
cut on fold of fabric / Stoffe





5

fold / falten



7

1891 Fan-Skirt

Size 34-44 / Grösse 34-44

1

Front / Vorderteil

cut 1 on fold of fabric /
im Stoffbruch zuschneiden

© by Black Snail Patterns

ns
eiden 1x

-44

∞

grainline
Fadenlauf

1891 Fan-Skirt
Size 34-44 / Grösse 34-44
5
placket / Untertritt
cut 1 / 1x
one size for all / eine Grösse für Alle
© by Black Snail Patterns

2

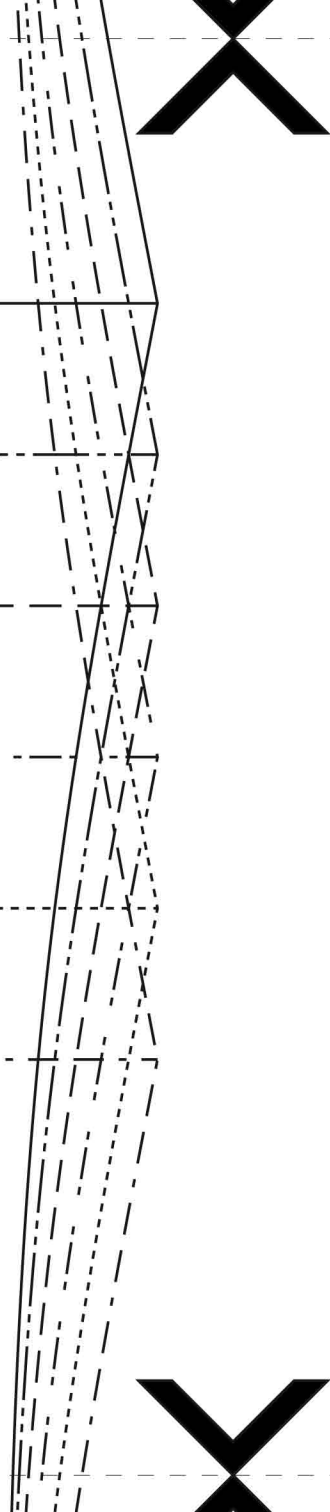
9

grainline
Fadenlauf



d mit Spitze

centre front
vordere Mitte



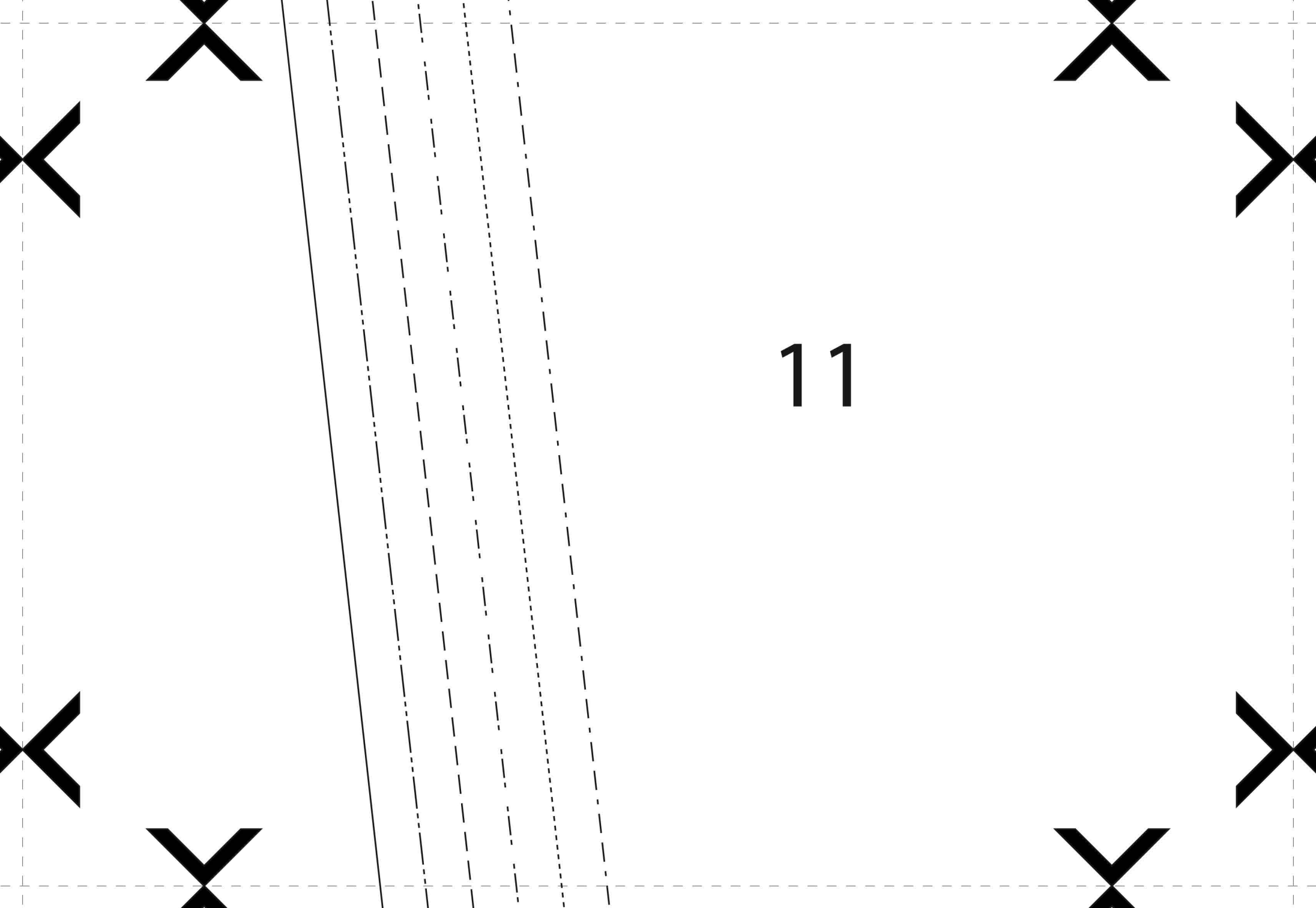


cu

grainline
Fadenlauf



10



11

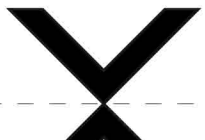
12

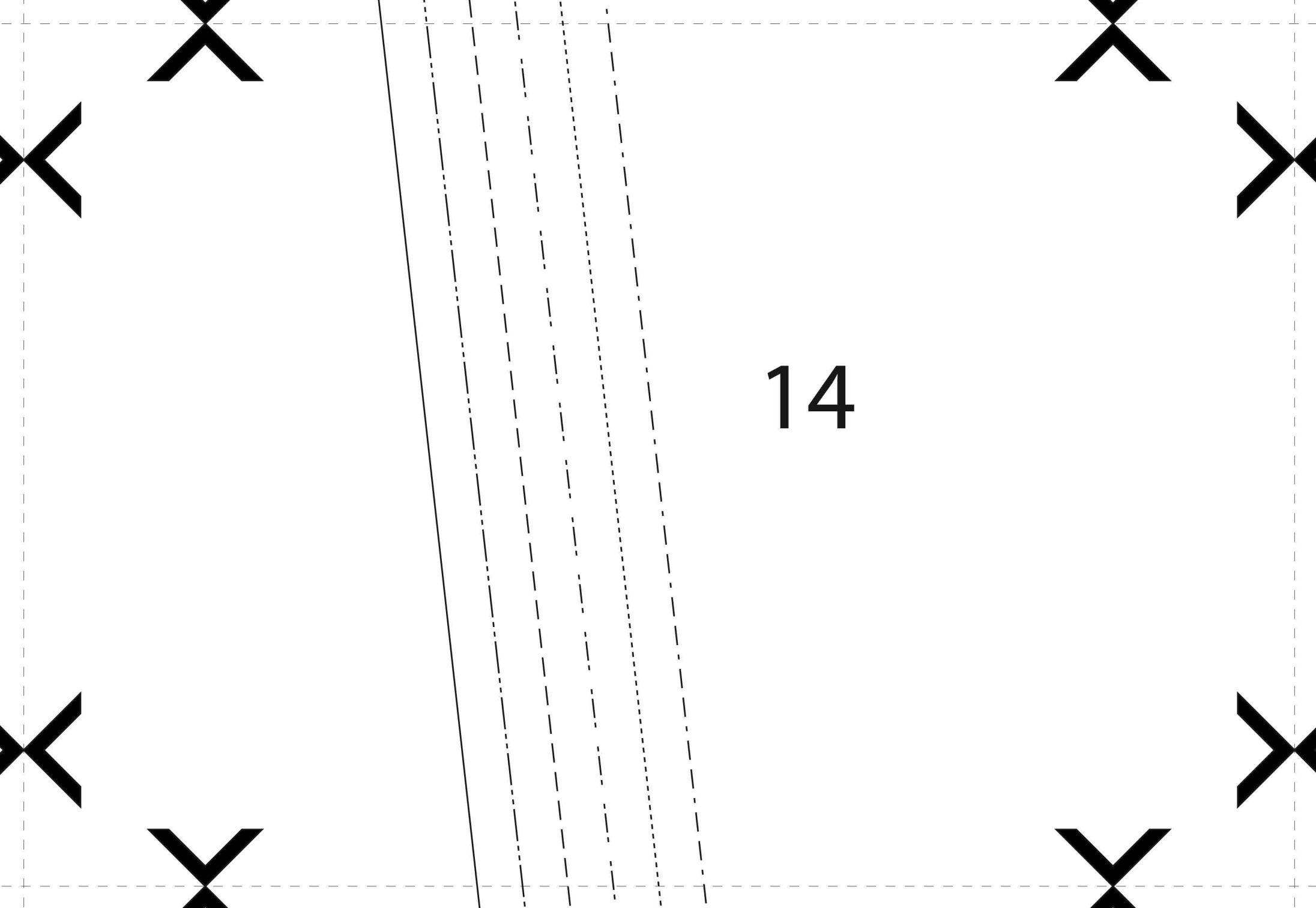
1891 Fan-Skirt
Size 34-44 / Grösse 34-44
3
waistband / Bund
cut 2 / 2x
© by Black Snail Patterns

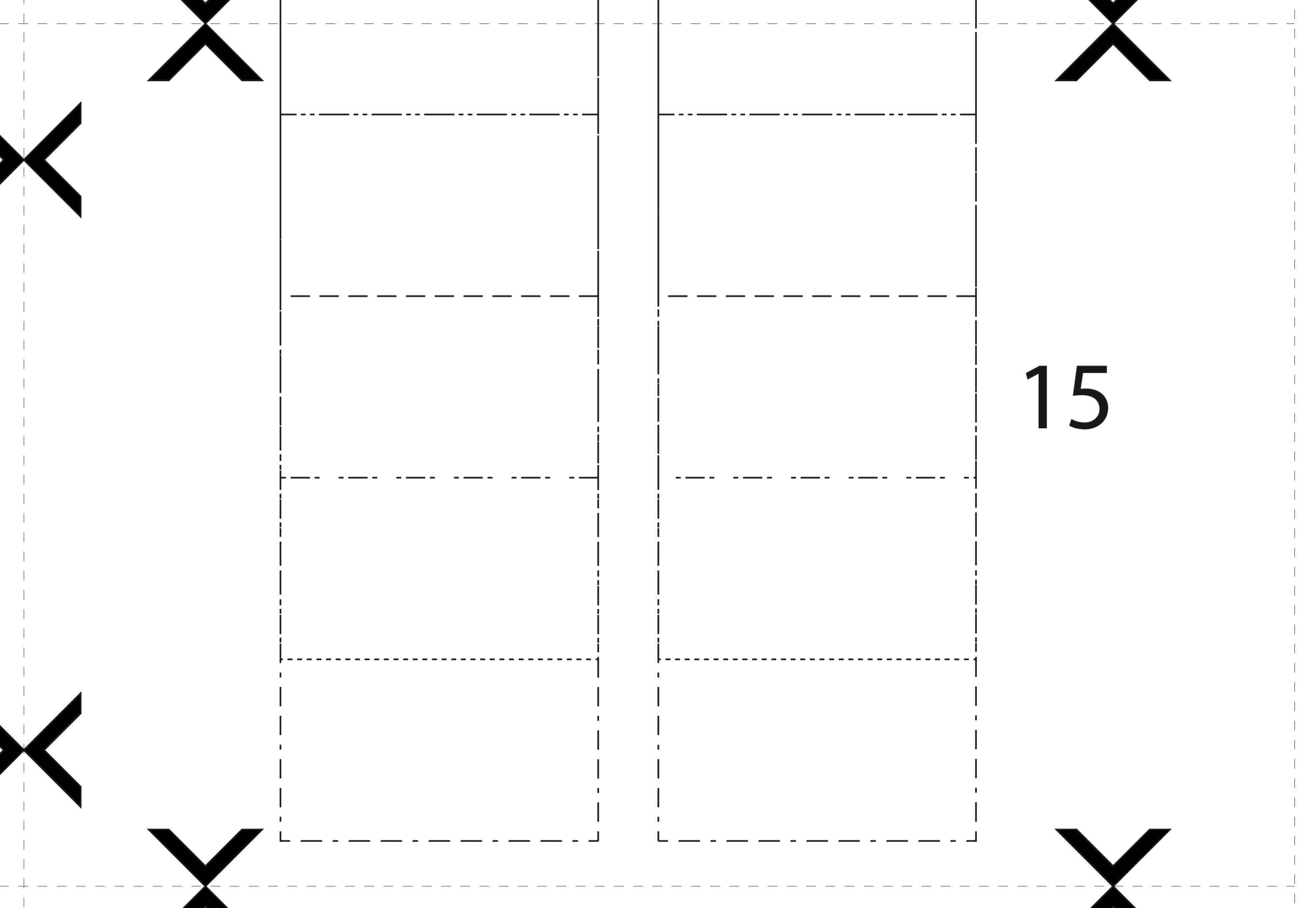
1891 Fan-Skirt
Size 34-44 / Grösse 34-44
4
pointed waistband / Bund n
cut 2 / 2x
© by Black Snail Patterns

13

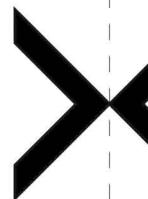
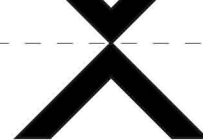
cut on fold of fabric / Stoffbruch





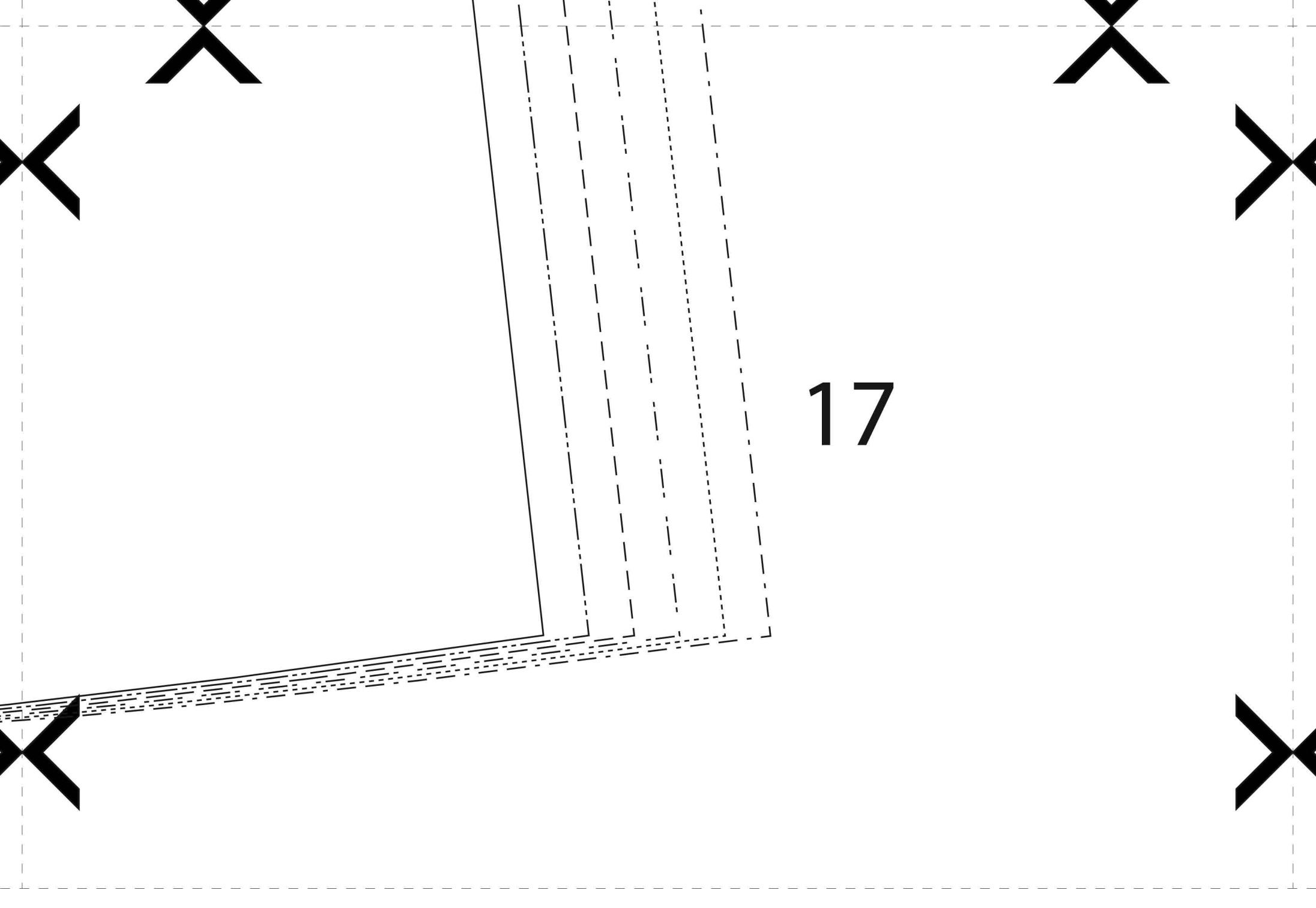


15

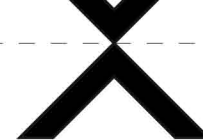


16





17



10cm x10cm

3" x 3"

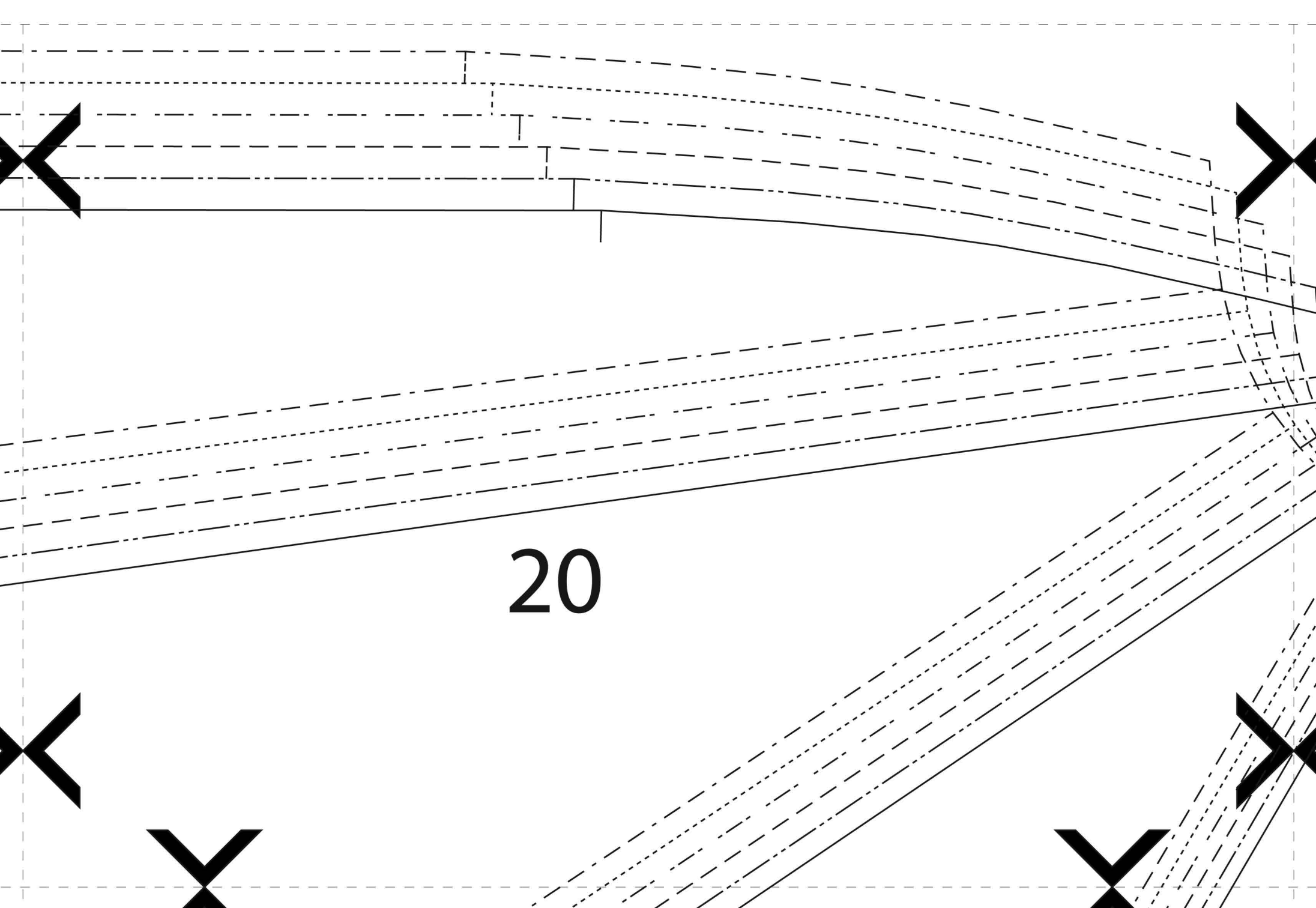
_____	34 / 8
-----	36 / 10
- - - - -	38 / 12
- . - . -	40 / 14
.....	42 / 16
- - - - -	44 / 18

18

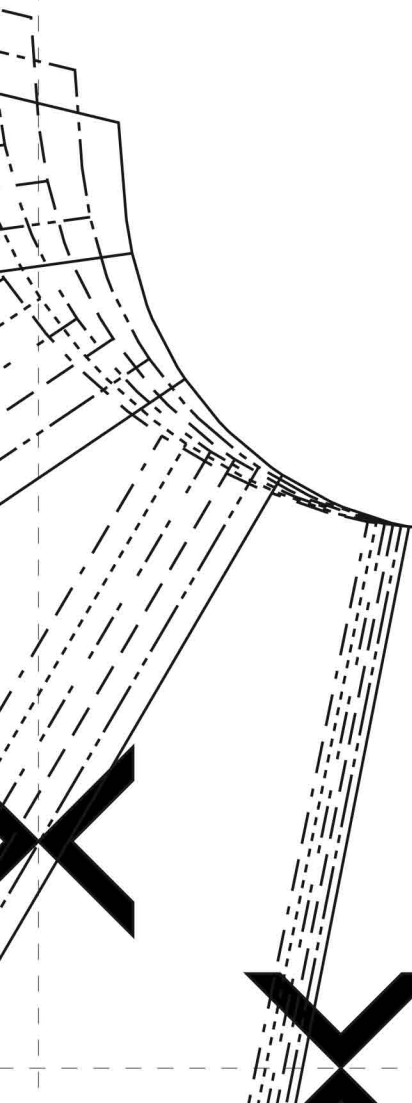
19

lengthen 23 1/2"
60cm verlängern

lengthen 23 1/2"
60cm verlängern



21



1

1

ce



22

men 23 1/2"
m verlängern

23

1891 Fan-Skirt

Size 34-44 / Grösse 34-44

2

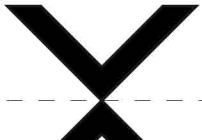
back / Rückteil

cut 2 / 2x

© by Black Snail Pattern

grainline
Fadenlauf

lengthen
60cm



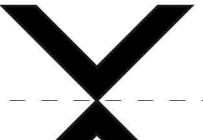
2

centre back / hintere Mitte

fold / falten

fold / falten

24



25

10cm x10cm

3" x 3"

_____ 34 / 8
----- 36 / 10
----- 38 / 12
----- 40 / 14
----- 42 / 16
----- 44 / 18

lengthen 23 1/2"
60cm verlängern

lengthen 23 1/2"
60cm verlängern

44

26

urns

27

lengthen 23 1/2"
60cm verlängern

lengthen 23 1/2"
60cm verlängern

lengthen 23 1/2"
60cm verlängern