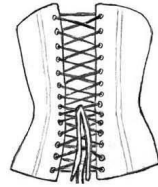
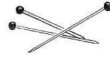




Black Snail Patterns

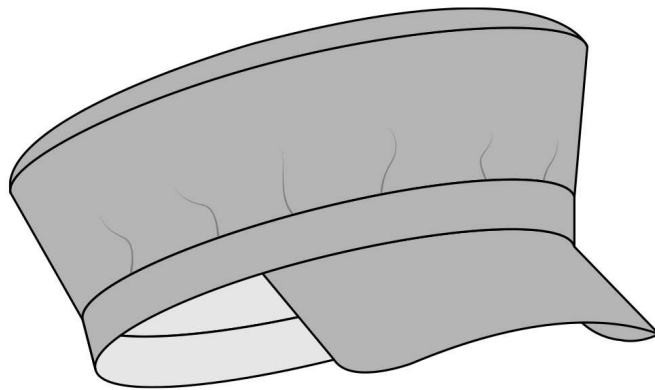
by R. Kohlberger



Sewing Pattern #0224

Train Drivers Hat

o Size S - XXL



#0224 Train Drivers Hat Size S - XXL

Fashion fabric: wool fabrics, tweeds, homespuns, cotton twill, linen

Lining: light yet strong cotton fabric

Interfacing: midweight linen fabrics

Visor: cardboard or cork

Fabric required:

Fashion fabric: 1yd. (90cm) with a width of 53" (135cm)

Lining: 1yd. (90cm) with a width of 53" (135cm)

Interfacing: 0.1yds (0,1m) with a width of 53" (135cm)

Pieces:

#1 visor : 2x

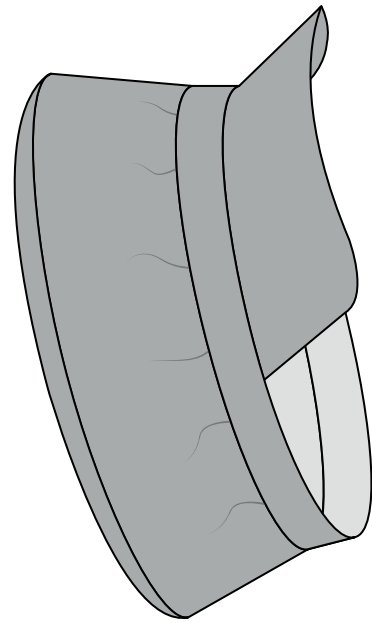
#1a visor: cut 2 from cardboard or cork

#2 headband: 1x + 1x lining

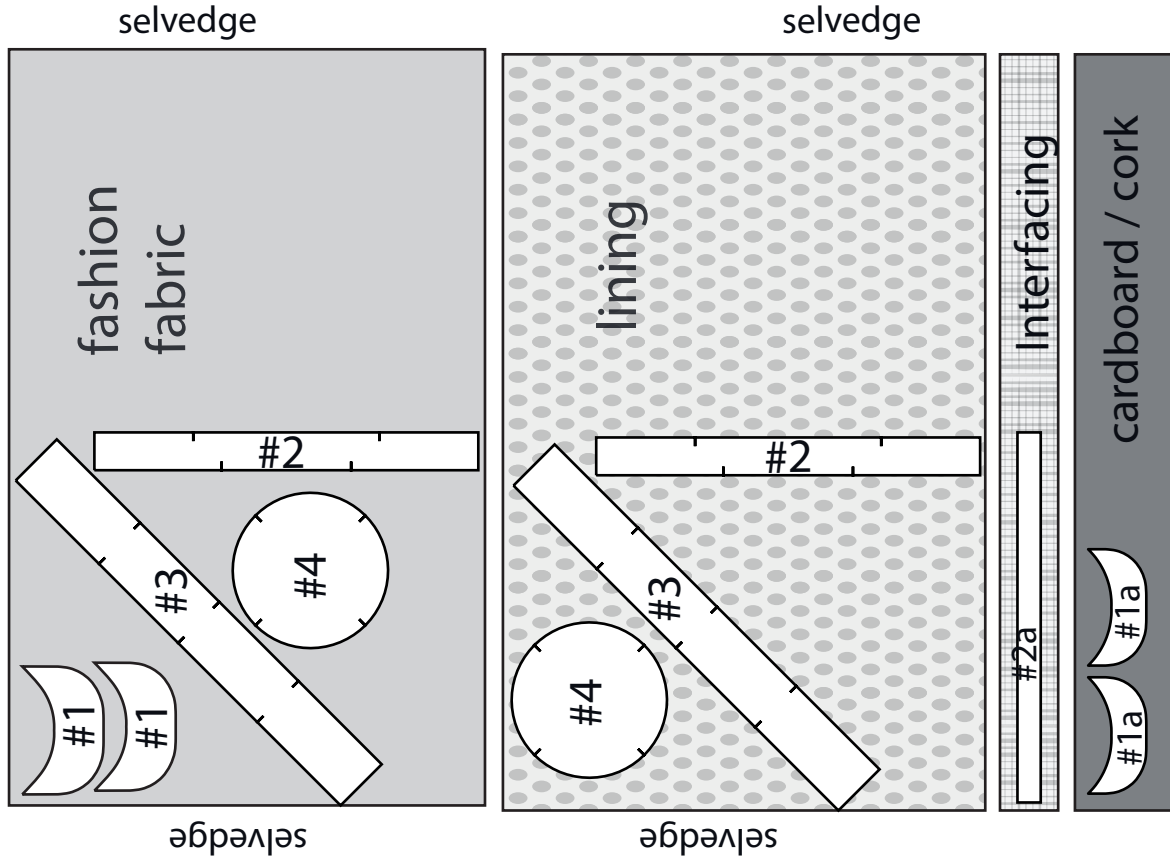
#2a headband interfacing: 1x interfacing

#3 crown: 1x + 1x lining

#4 top: 1x + 1x lining



3/8" (1cm) seam allowance included-
except where noted on individual pattern pieces



#0224 Zugführer Kappe Größe S - XXL

contact@blacksnailpatterns.com

Stoffempfehlung: Wollstoffe, Tweed, Baumwolltwill,

mittelschweres Leinen

Futter: leichter, aber fester Baumwollstoff

Einlage: mittelschweres Leinen

Schild: Karton oder Kork

Stoffverbrauch

Oberstoff: 90cm bei einer Breite von 135cm

Futterstoff: 90cm bei einer Breite von 135cm

Leinen: 10cm bei einer Breite von 135cm

Teile:

#1 Schild: 2x

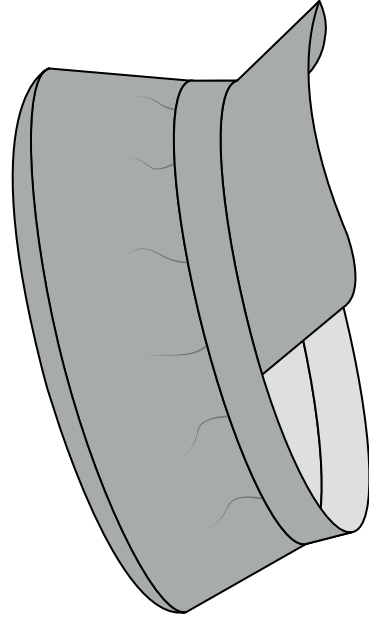
#1a Schild: 2x Karton oder Kork

#2 Stirrband: 1x

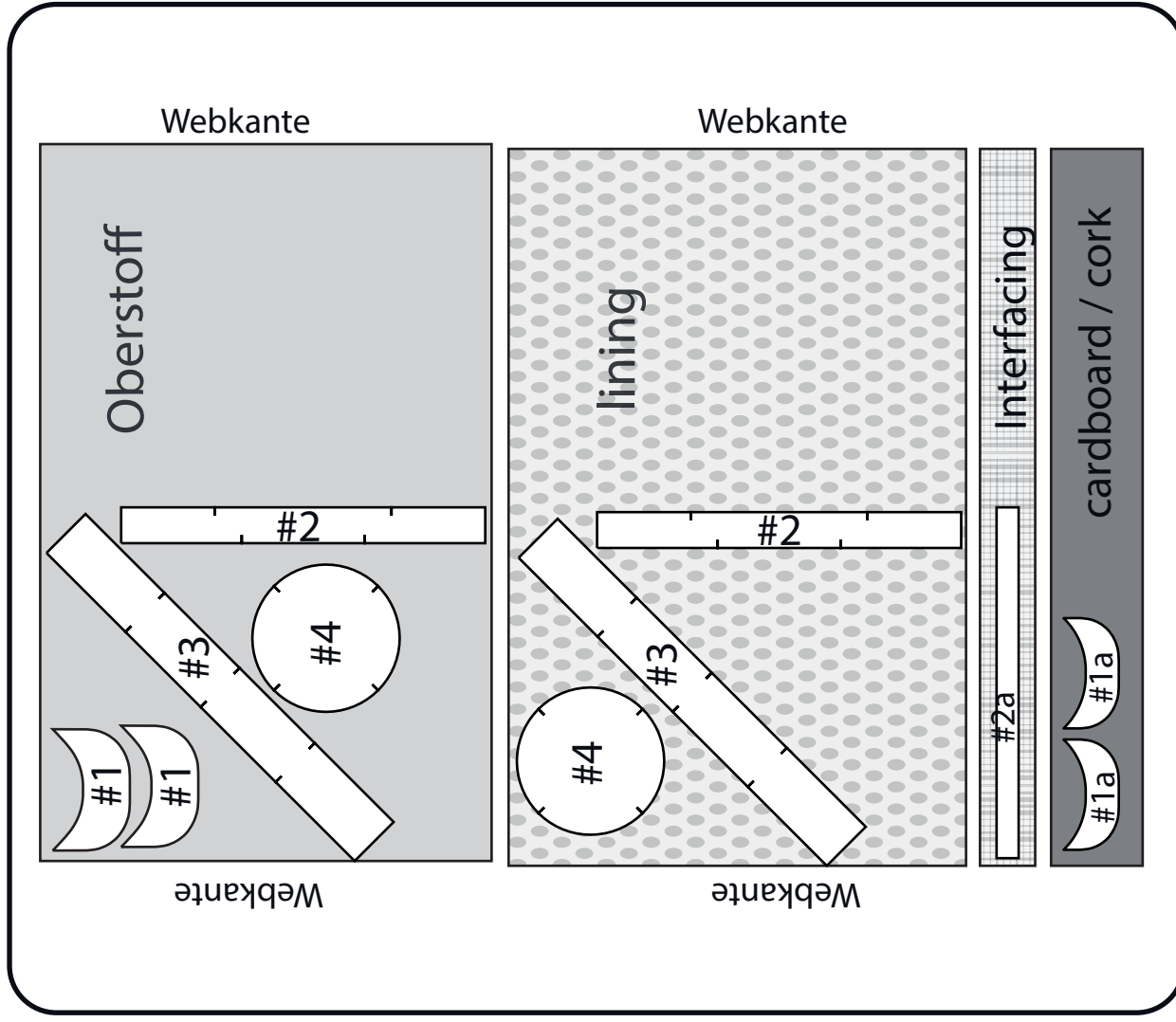
#2a Stirrband Einlage: 1x Einlage

#3 Krone: 1x + 1x Futter

#4 Deckel: 1x + 1x Futter



1cm Nahtzugabe enthalten - außer abweichende
Angaben direkt am Schnittmuster



10cm x10cm

3" x 3"

S

M

L

XL

XXL

1

1,5cm

ne

center front / vordere Mitte

grain line
Faden



XXX

XL

L

W

S



XXX

XL

L

W

S

2a

stitching line / Nahhtlinie

XXX

XL

L

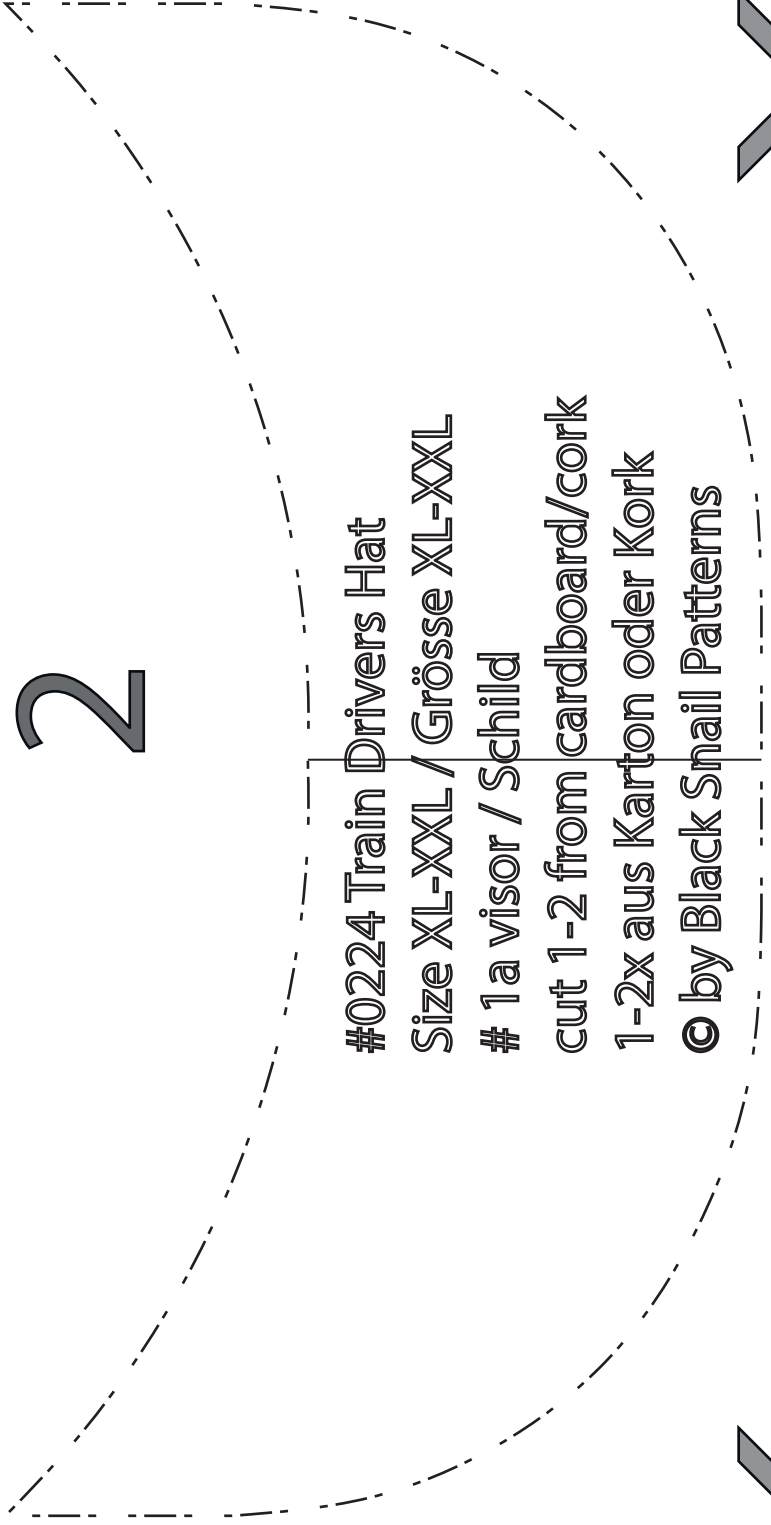
W

S

Center front / vordere Mitte

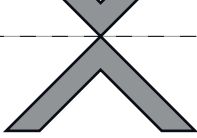
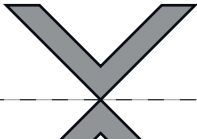


/ Nahhtlinie



2

#0224 Train Drivers Hat
Size XL-XXL / Grösse XL-XXL
1a visor / Schild
cut 1-2 from cardboard/cork
1-2x aus Karton oder Kork
© by Black Snail Patterns



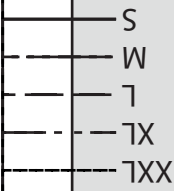
#0224 Train Drivers Hat

Size S-XXL / Grösse S-XXL

2 headband / Strinband

cut 1 + 1 lining / 1x + 1x Futter

© by Black Snail Patterns

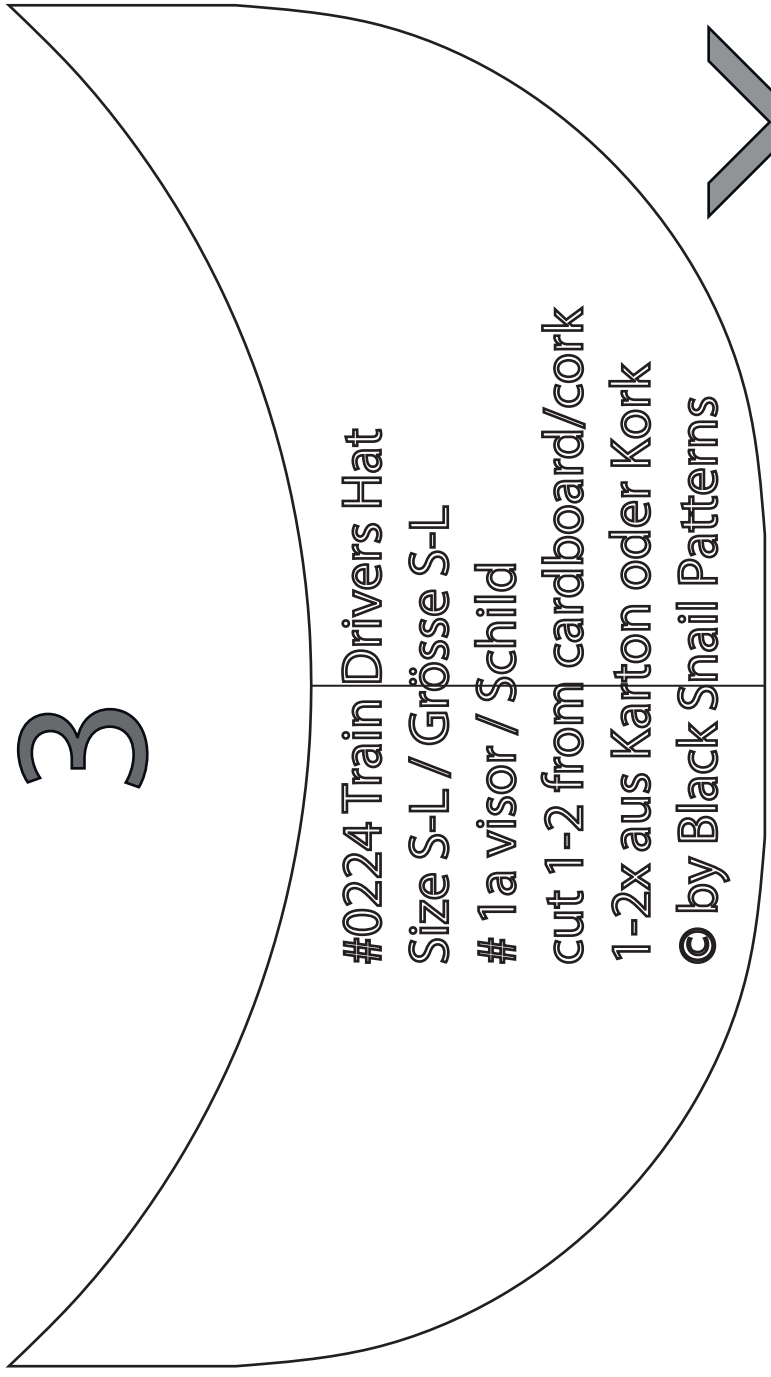


2



stitching line / Näh-

eam allowance 5/8" / „8/8" / Nahtzugabe 1,5cm



#0224 Train Drivers Hat

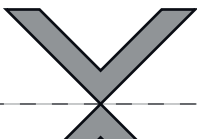
Size S-L / Grösse S-L

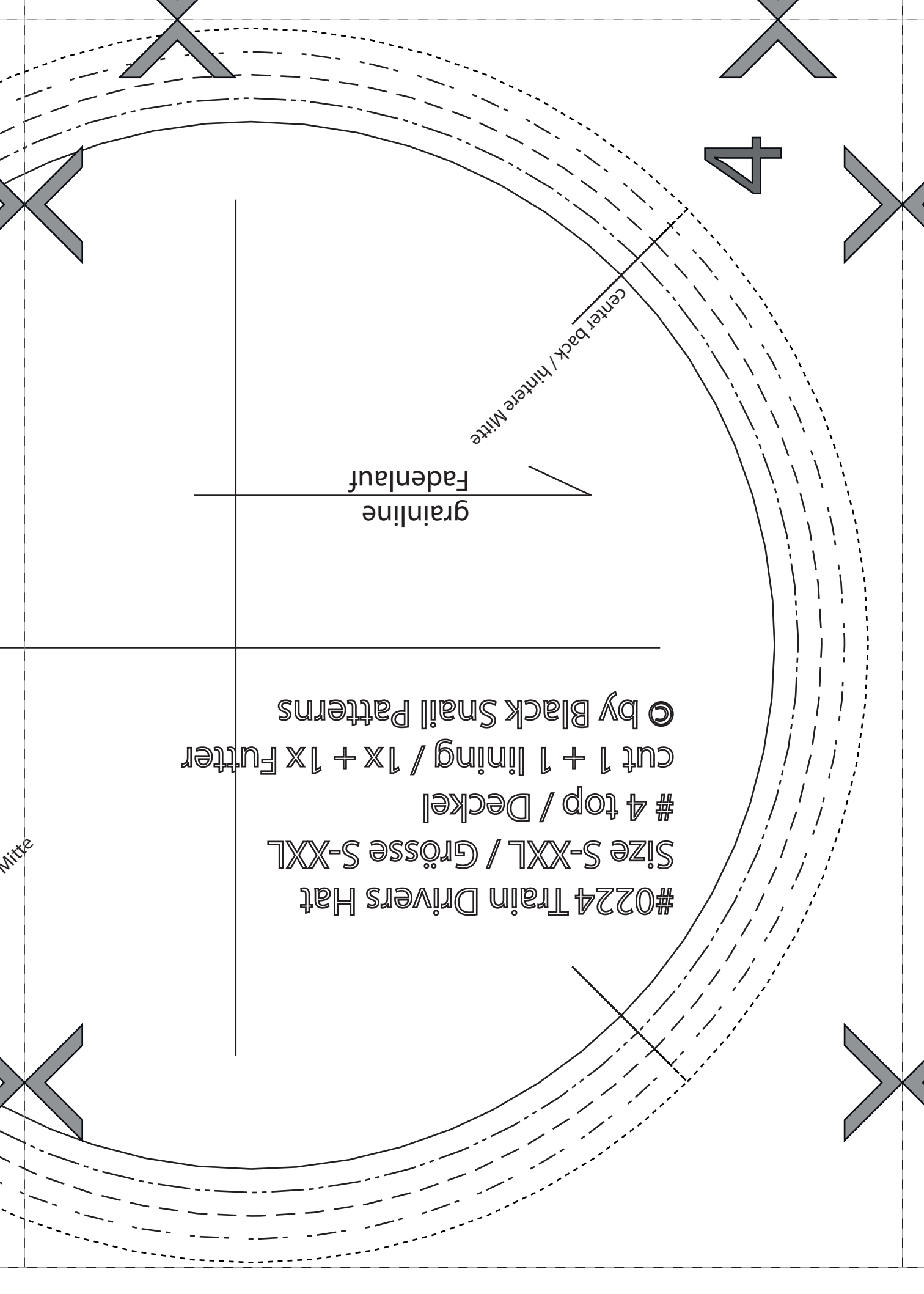
1a visor / Schild

cut 1-2 from cardboard/cork

1-2x aus Karton oder Kork

© by Black Snail Patterns





#0224 Train Drivers Hat

Size S-XXL / Grösse S-XXL

4 top / Deckel

cut 1 + 1 lining / 1x + 1x Futter
© by Black Snail Patterns

grainline
Fadenlauf

center back / hintere Mitte

Mitte

5

①

Seam allowance 5/8" / Nahtzugabe 1,5cm

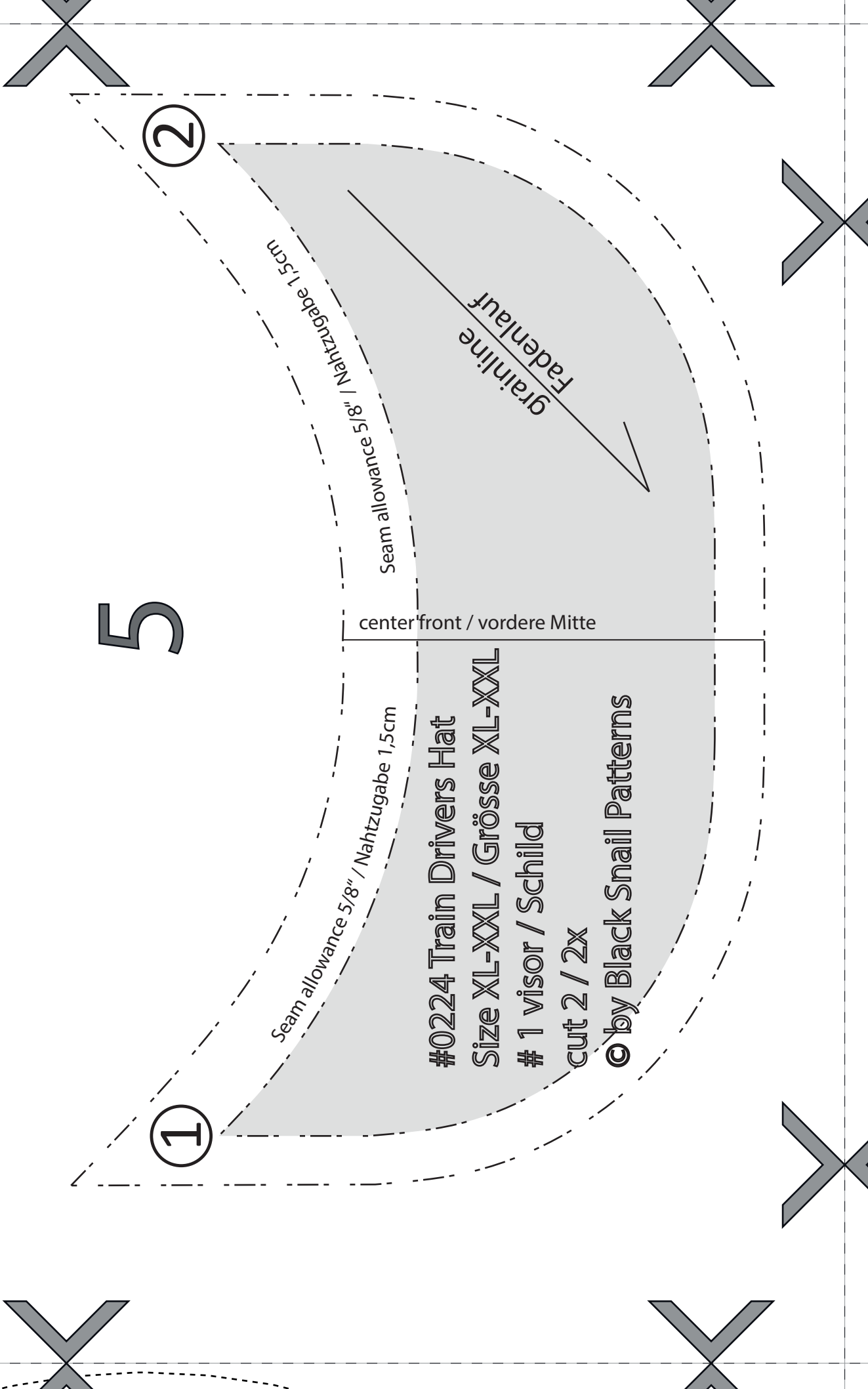
#0224 Train Drivers Hat
Size XL-XXL / Grösse XL-XXL
1 visor / Schild
cut 2 / 2x
© by Black Snail Patterns

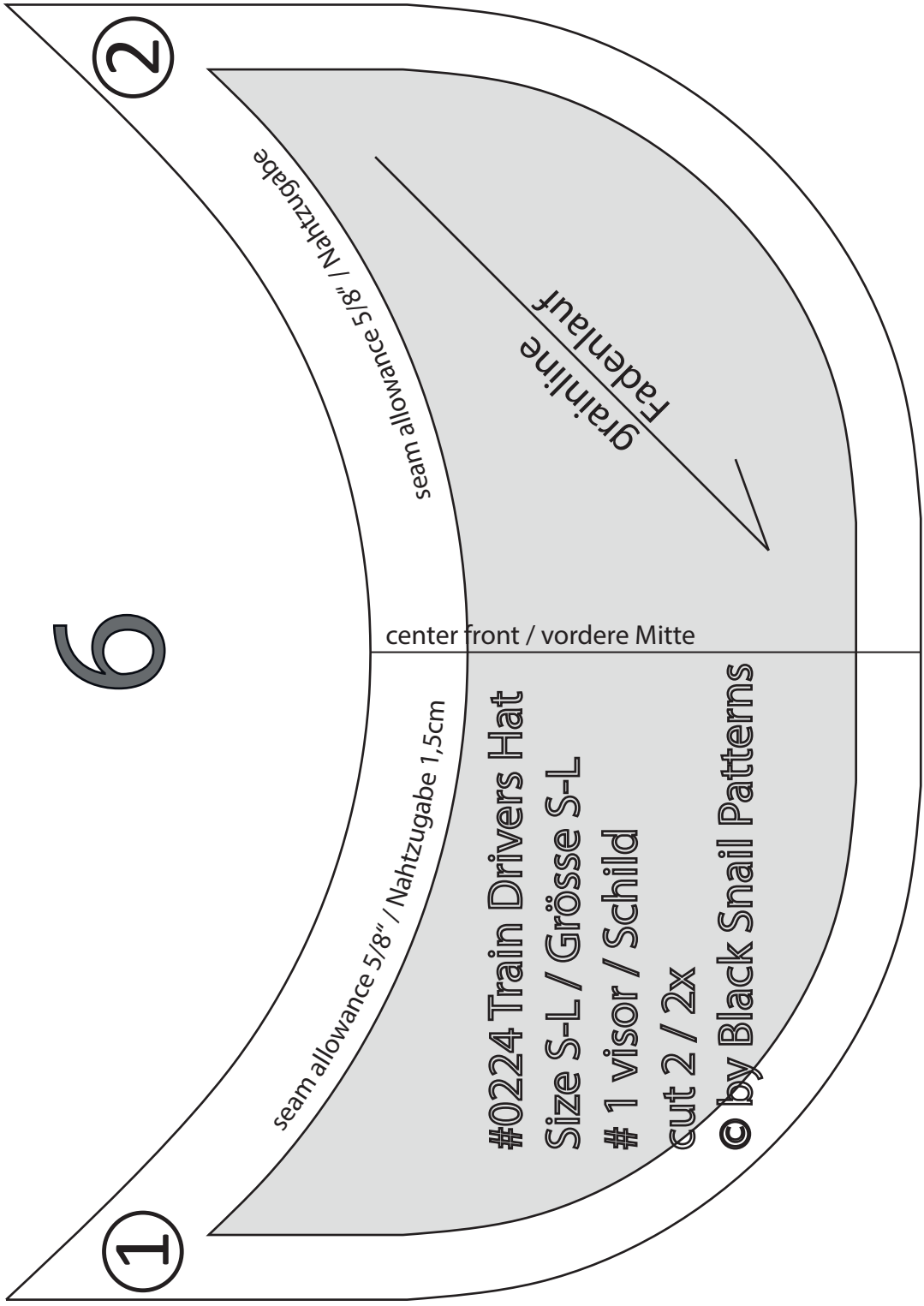
center front / vordere Mitte

②

Seam allowance 5/8" / Nahtzugabe 1,5cm

grainline
Fadenlauf

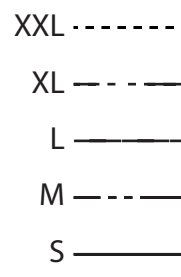
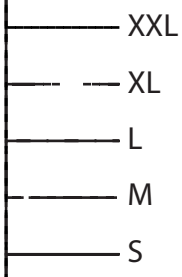




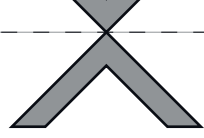
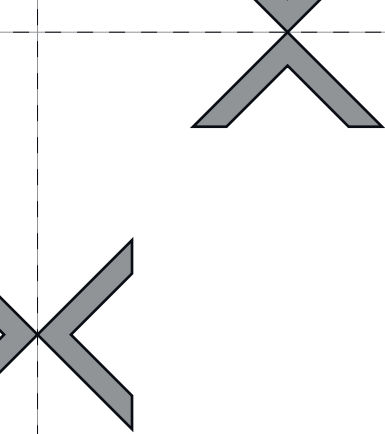
#0224 Train Drivers Hat
Size S-L / Grösse S-L
1 visor / Schild
cut 2 / 2x
© by Black Snail Patterns

7

Hat size / Hutgröße	S	M	L	XL	XXL
EU cm	54	56	58	60	62
US	6 3/4	7	7 1/4	7 1/2	7 3/4
Inch	21 1/8"	21 7/8"	22 5/8"	23 1/2"	24 1/4"



mail Patterns
 ng / 1X + 1X Futter
 one
 örösse S-XXL
 Drivers Hat





grainline
Fadenlauf

center front / vordere Mitte

#0224 Train Drive
Size S-XXL / Größe
3 crown/ Kron
cut 1 + 1 lining /
© by Black Snail



